



**Assessor**



**Clerk-Recorder**



**Elections**



# **Office of Mark Church Assessor-County Clerk-Recorder & Chief Elections Officer**

**FY 2021-23 Recommended Budget**

June 23, 2021

# ACRE Mission Statement

## “People First”

**To ensure** equitable service and treatment of San Mateo County property owners by accurate and fair valuation of land, improvements, and businesses.

**To register** San Mateo County citizens to vote and efficiently conduct transparent elections.

**To create** an accurate public record of recorded transactions relating to people and property within San Mateo County.

**To preserve** and protect our historical cultural records.

# FY 2020-21 ACRE Awards



**Esri Special  
Achievement in  
GIS (SAG) Award**



**U.S. Election Assistance  
Commission Awards**  
Most Creative or Original  
“I Voted” Stickers



**National Association of  
Counties (NACo) Awards**  
GIS Assessor Parcel Web  
Portal



**National Association of  
Counties (NACo) Awards**  
Assessor’s Building Plans  
Submission Portal



**Live Help Now Challenge  
Award**  
Best in Customer Service



**STARS Green Award**  
Assessor’s Building  
Plans Submission Portal

# FY 2021-22 Budget Overview

	<b>FY 2020-21 Revised</b>	<b>FY 2021-22 Recommended</b>	<b>Amount Change</b>	<b>Percent Change</b>
Total Sources	\$17,813,704	\$18,969,192	\$1,155,488	6.5%
Total Requirements	\$34,117,343	\$36,124,524	\$2,007,181	5.9%
Net County Cost	\$16,303,639	\$17,155,332	\$851,693	5.2%
Total Positions	155	156	1	0.7%

# FY 2022-23 Budget Overview

	<b>FY 2021-22 Recommended</b>	<b>FY 2022-23 Preliminary Recommended</b>	<b>Amount Change</b>	<b>Percent Change</b>
Total Sources	\$18,969,192	\$20,939,193	\$1,970,001	10.4%
Total Requirements	\$36,124,524	\$38,530,198	\$2,405,671	6.7%
Net County Cost	\$17,155,332	\$17,591,005	\$435,673	2.5%
Total Positions	156	156	0	0%

# FY 2021-23 Budget Overview

## Significant Budget Changes

Gubernatorial Recall Election

Gubernatorial Primary & General Elections

Statewide and Local Redistricting

Voter Education and Outreach

# FY 2021-23 Budget Overview

## Significant Budget Changes

### Election and Voter Education and Outreach Costs

Gubernatorial Elections (3)	Election Cost	Voter Education & Outreach	Total
Recall Election FY 2021-22	\$2,690,759	\$200,000	\$2,890,759
Gubernatorial Primary Election FY 2021-22	\$5,960,572	\$500,000	\$6,460,572
Gubernatorial General Election FY 2022-23	\$8,080,649		\$8,080,649
TOTAL	\$16,731,981	\$700,000	\$17,431,980

# FY 2021-23 Budget Overview

## Significant Budget Changes

Statutory ADA Improvement

Elections Tower Road

\$1M (CIP)

Preservation of Historical Maps and Documents Phase I

Fire/Waterproof Filing System

\$1.2M Modernization Trust Fund

Preservation of Historical Maps and Documents Phase II

Chemical Treatment of Documents (Lifespan of 300 - 500 years)

\$1.8M Modernization Trust Fund



# FY 2021-23 ACRE Budget Priorities



Assessment Roll Management,  
Appeals and Litigation

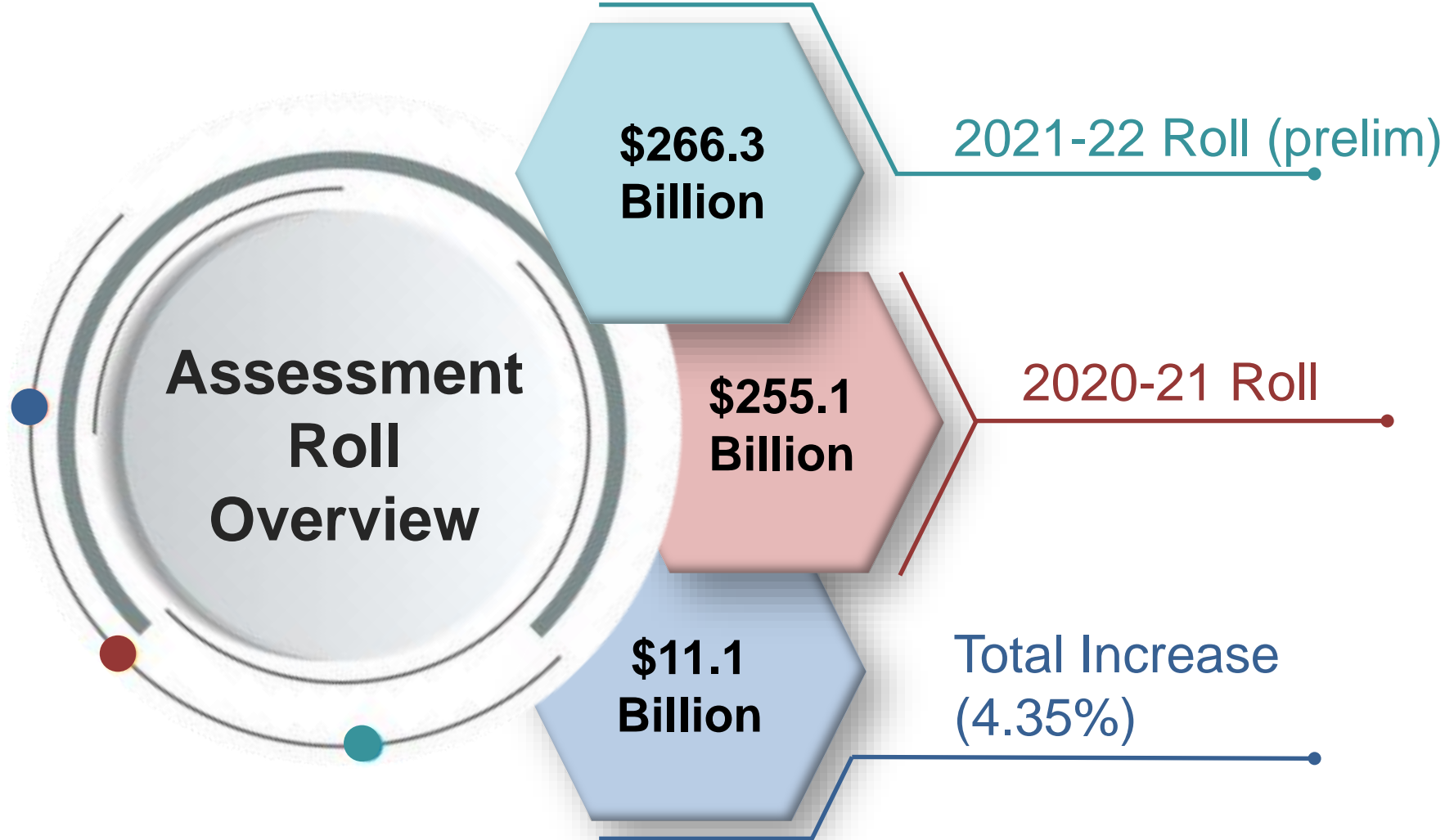
Elections - Gubernatorial  
Recall, Primary & General Elections

Elections - Statewide and  
Local Redistricting

Elections - Statutory ADA Improvement

Technology

# FY 2021-23 ACRE Budget Priorities

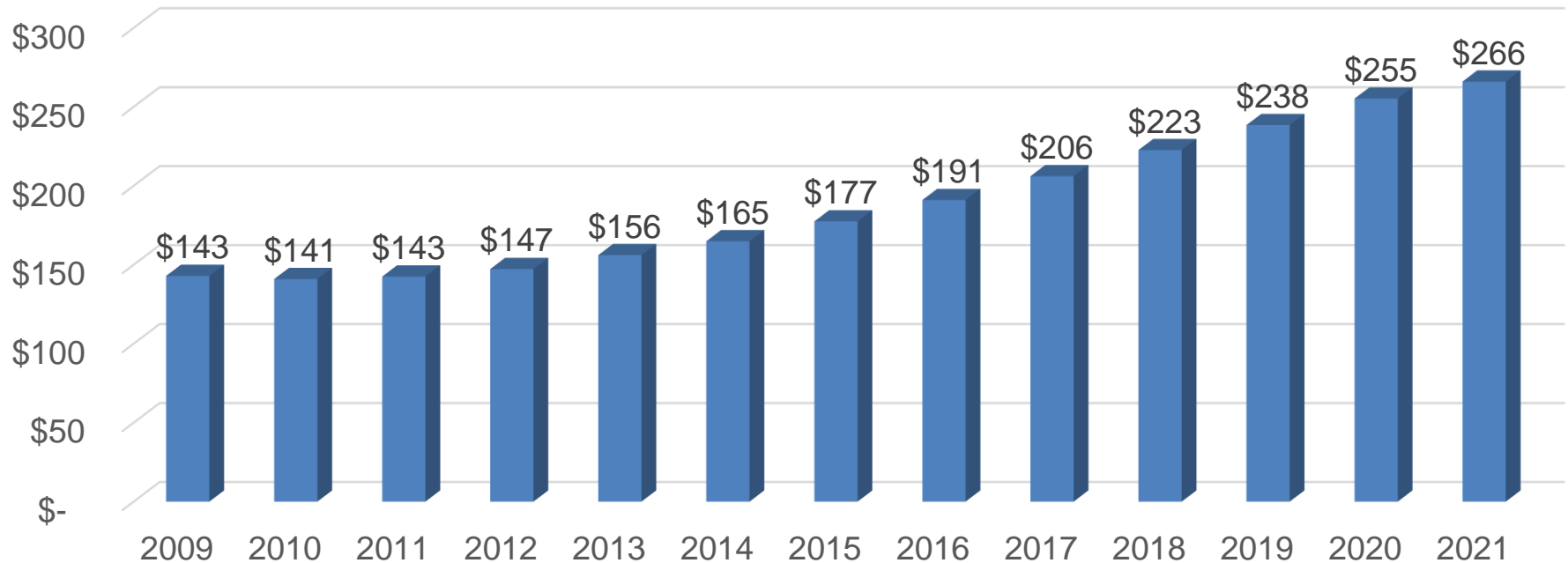


# FY 2021-23 ACRE Budget Priorities

## Assessment Roll Growth

Net Combined Roll Value  
2009-2021

Billions



% Changed

-1.4%

1.1%

3.3%

6.0%

5.6%

7.6%

7.6%

7.9%

8.0%

7.5%

7.0%

4.3%

# FY 2021-23 ACRE Budget Priorities

## Assessment Appeals and Litigation

### Appeals Before AAB

Appeals by Genentech, Inc.  
Open and Pending Appeals (2006 to 2020 filings)

	Number of Appeals	Roll Value	Owner's Opinion of Value	Value At Risk	% At Risk
Total	604	\$41,065,472,763	\$16,790,671,650	\$24,274,801,113	68.17%

### Appeals by All Others

Total	895	\$27,689,428,258	\$16,354,871,494	\$11,334,556,764	31.83%
Grand Total	1,499	\$68,754,901,021	\$33,145,543,144	\$35,609,357,877	51.79%

# FY 2021-23 ACRE Budget Priorities



The diagram features a central light gray circle with a drop shadow, containing the text "ACRE Technology" in bold blue font. Four dotted lines radiate from the right side of the circle to four colored rectangular boxes stacked vertically on the right. Each box contains a priority item, preceded by a small colored circle matching the box's color.

## ACRE Technology

● APAS Development and Deployment

● Granicus Systems and Applications

● 555 County Center Telephone System

● Artificial Intelligence/Machine Learning

## APAS Development and Deployment

APAS Projects are all on schedule and on budget.

Timeframe – 3-3.5 years

Target Completion Date – June 30, 2022

Project is 65% complete with 98% of Infrastructure and 90% of Business and Technical Framework completed.

Salesforce Platform and Amazon Web Service (AWS) Cloud Environment Migration completed.

COVID-19 Impact – Vendor contract extended to June 30, 2022.

APAS Data Cleansing and Conversion Project in progress.

# FY 2021-23 ACRE Budget Priorities

## Granicus Systems Upgrade

**VitalDocs:** Vital Documents system & repository. Includes public kiosk to search for and request copies of birth/marriage/death certificates.

**eGovernment Lookup Portal:** Used by SMC departments (authorized users) to search and view vital records.

**LandDocs:** Recorded Documents system & repository.

**Summit:** eRecording of Documents

**RecorderWorks Portal:** Used by staff, SMC departments and the public to search and view recorded documents.

**Extract:** Auto-indexing of recorded documents.

**CornerStone:** Cashiering System for recording fiscal transactions.

**ClerkDocs:** FBN, marriage licenses and other para-professional filings.

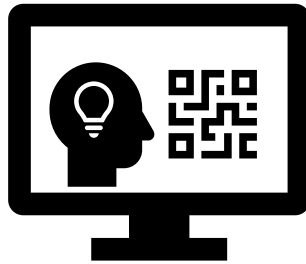
## 555 County Center Telephone System

Voice Over Internet Protocol (VoIP) System Features





## Artificial Intelligence/Machine Learning Pilot Project Scope



- Detailed evaluation of Assessor Commercial Data and Commercial Property Appraisal Methodologies.
- Propose a solution to build a unified, standardized view of Commercial Property Data for Commercial Property Assessments.
- Prepare an Executive Project Report summarizing the findings.

# FY 2021-23 ACRE Budget Challenges



California Proposition 19

Commercial Development Activities

Gubernatorial Recall Election

State and Local Redistricting

Cybersecurity

# FY 2021-23 ACRE Budget Challenges

## California Proposition 19

The Home Protection for Seniors, Severely Disabled, Families and Victims of Wildfire or Natural Disasters Act

### What it does



Modifies exclusions allowed for intergenerational transfers



Provides more flexibility for Seniors & Disabled owner to transfer their assessed value to replacement homes

### Workload Impacts



Requires an appraisal of every intergenerational transfer



Tracking the change in use of property provided an exclusion due to an intergenerational transfer



Tracking of base year transfers in & out of the county by Seniors & Disabled owners

# FY 2021-23 ACRE Budget Challenges

## California Proposition 19

The Home Protection for Seniors, Severely Disabled, Families and Victims of Wildfire or Natural Disasters Act

Parent-Child & Grandparent-Grandchild Exclusion	Effective Date	2/16/2021
Base Year Value Transfer – Persons At Least Age 55/Disabled	Effective Date	4/1/2021
Increased revenue per year	Approximately \$14M	
Number additional of Appraisal Services positions needed	7	
Cost for 7 additional Appraisal Services positions per year	\$0.92M	

# FY 2021-23 ACRE Budget Challenges

## New Construction - Proposed, Entitled and Current Development

Status of Development	Square Feet
<b>Proposed - Under Review</b>	25,400,186
<b>Entitled</b>	10,629,884
<b>Total</b> square feet projected to be completed in next 10 years – by 1/1/2032	<b>36,036,070</b>
<b>Under Construction as of 01/01/21 (Lien Date)</b>	
0% - 19% complete	7,930,337
20% - 39% complete	3,736,765
40% - 59% complete	550,000
60% - 79% complete	1,593,700
80% - 99% complete	1,966,132
<b>Total</b> square feet expected to be completed in 3 years – by 1/1/2024	<b>15,776,934</b>
<b>TOTAL</b>	<b>51,807,004</b>

## FY 2021-23 ACRE Budget Challenges







# ACRE Innovations



## GIS Assessor Parcel Web Portal *2021 NACo Achievement Award Winner*

Transforms business operations

Cutting-edge Technology

Esri LGIM Platform

Foundation of Countywide GIS

Assessor Parcel (225K parcels/6K maps),  
Tax Rate Area (TRA) and Election precinct  
layers

Web portal available to public, cities and  
jurisdictions in 2020-21



# Performance and Equity

Provide Voter Education and Outreach Program to Low Income and Language Minority Residents.



Sequoia Union High School Work-Ability Training Program for developmentally disabled children.



Multilingual Election Materials for Ethnically-diverse Residents.



Removal of Racially Restrictive Covenants from Deeds.



Accessibility for Voters with Disabilities.



ACRE Staff Equity Education and Training.



# C.A.R.E. for Employees



## Current

- Annual Year-end Employee Recognition Events Event (Exceptional Employee and Team Public Service Awards)
- Annual Assessor Roll Close Celebration
- ACRE Grapevine Newsletter.



## Planning

ACRE's Strategic Plan is our roadmap for the future, using new technologies and establishing innovative public service programs.



## November 2020 Presidential General Election

### Election Overview



**442,637** Registered Voters



**245** Candidates



**163** Seats Up for Election



**133** Ballot Styles

**399** Total (English, Spanish, and Chinese)



**60** Jurisdictions on Ballot



**65** Contests/Offices



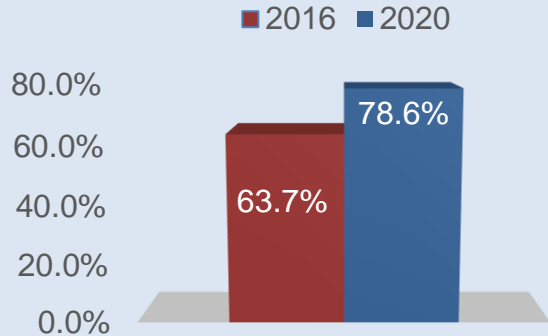
**11** Measures



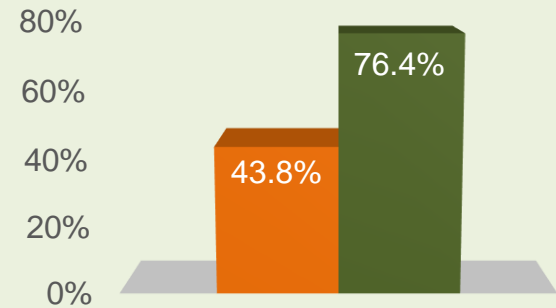
**12** State Propositions

# C.A.R.E. for Customers

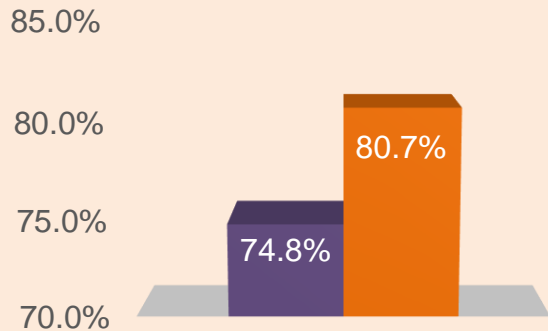
## Overall Voter Turnout: 85.9%



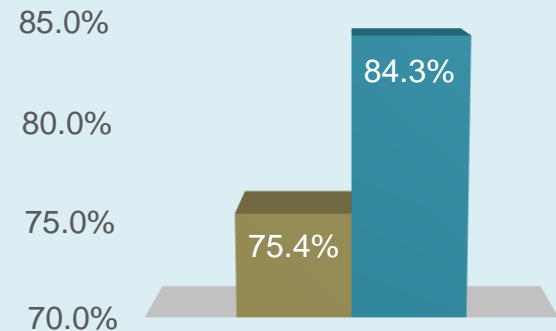
Turnout among registered voters aged 18-24 rose from 63.7% in 2016 to **78.6%** in 2020.



Turnout of eligible voters 18-24 rose from 43.8% to **76.4%**.

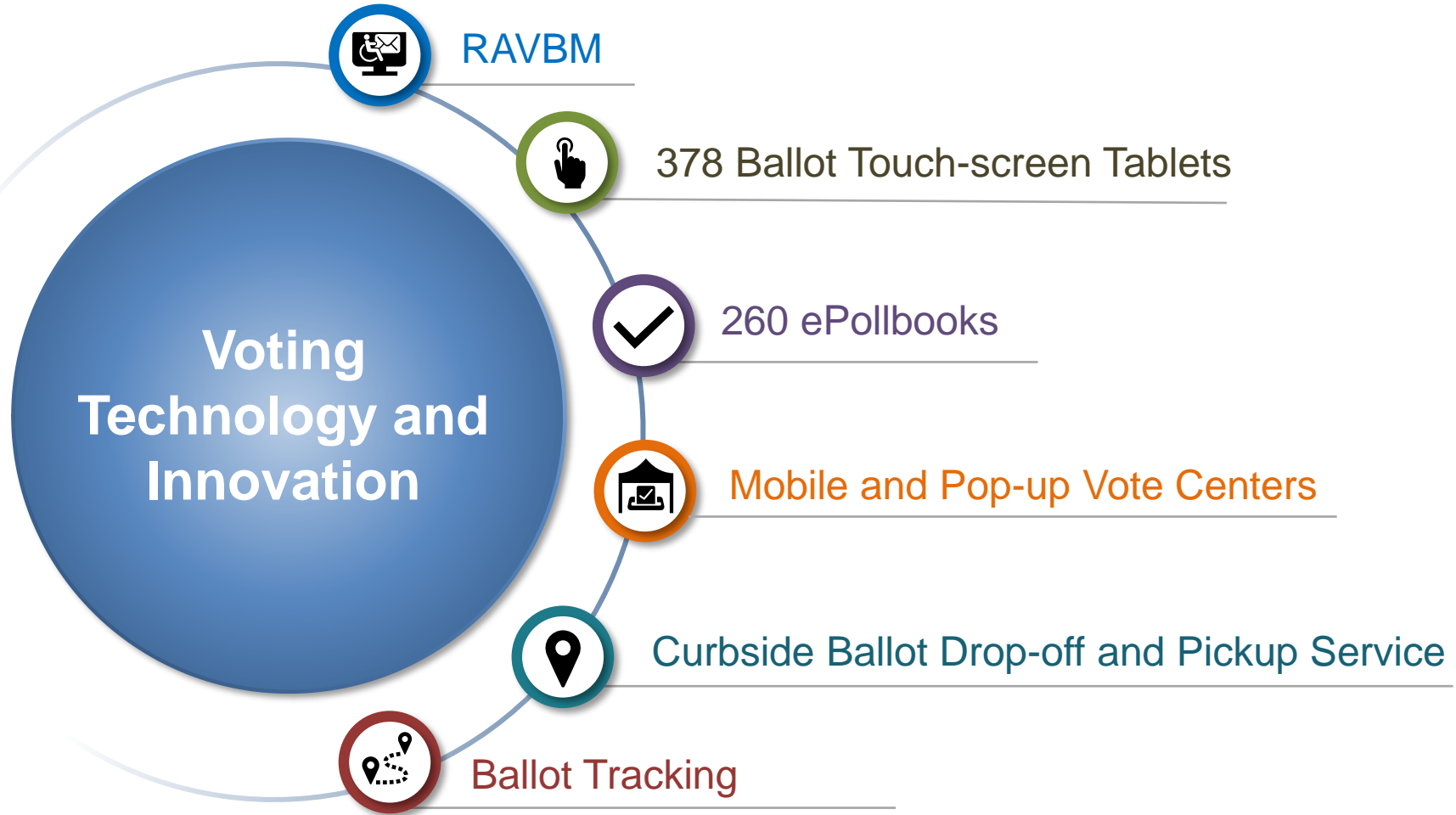


Turnout of registered Latino voters rose from 74.8% to **80.7%**



Turnout of registered Asian-American voters rose from 75.4% to **84.3%**

## Voting Technology and Innovation



# C.A.R.E. for Customers



## Current

### Other Technologies Improving Public Experience

- ACRE's Interactive Website with Responsive Design.
- Clerk-Recorder System Upgrades and New Software Applications.
- Qmatic Online Appointment System and Customer Satisfaction Surveys.



## Planning

- Development of New Assessors System – APAS.
- Development of New GIS Applications and Tools.
- Artificial Intelligence and Machine Learning Platforms.





OFFICE OF MARK CHURCH  
**ASSESSOR-COUNTY CLERK-RECORDER &  
CHIEF ELECTIONS OFFICER**  
COUNTY OF SAN MATEO



International  
Award

**Esri Special  
Achievement in GIS  
(SAG) Award**



National  
Award

**National Association of  
Counties (NACo) Awards**  
GIS Assessor Parcel Web  
Portal



Local  
Award

**Live Help Now Challenge  
Award**  
Best in Customer Service



National  
Award

**U.S. Election Assistance  
Commission Awards**  
Most Creative or Original  
“I Voted” Stickers



National  
Award

**National Association of  
Counties (NACo) Awards**  
Assessor’s Building Plans  
Submission Portal



Local  
Award

**STARS Green Award**  
Assessor’s Building  
Plans Submission Portal

---

**Thank You!**

