

October 20, 2020

San Mateo County Board of Supervisors

San Mateo County Flood & Sea Level Rise Resiliency District

Len Materman, CEO



San Mateo County Flood & Sea Level Rise Resiliency District

Began January 1, 2020. Board of Directors:

- **Two County Supervisors (Pine, Horsley)**
- **Five city council members chosen by C/CAG (Colson, Gauthier, Derwin, Papan, Ruddock)**

An independent government agency that works across jurisdictional boundaries to secure and leverage public and private resources for the long-term resilience of our region.

We plan and build solutions to the climate change impacts of sea level rise, flooding, and coastal erosion, and enhance the environment, recreational opportunities, and quality of life within communities throughout the county.



2020 Priorities:

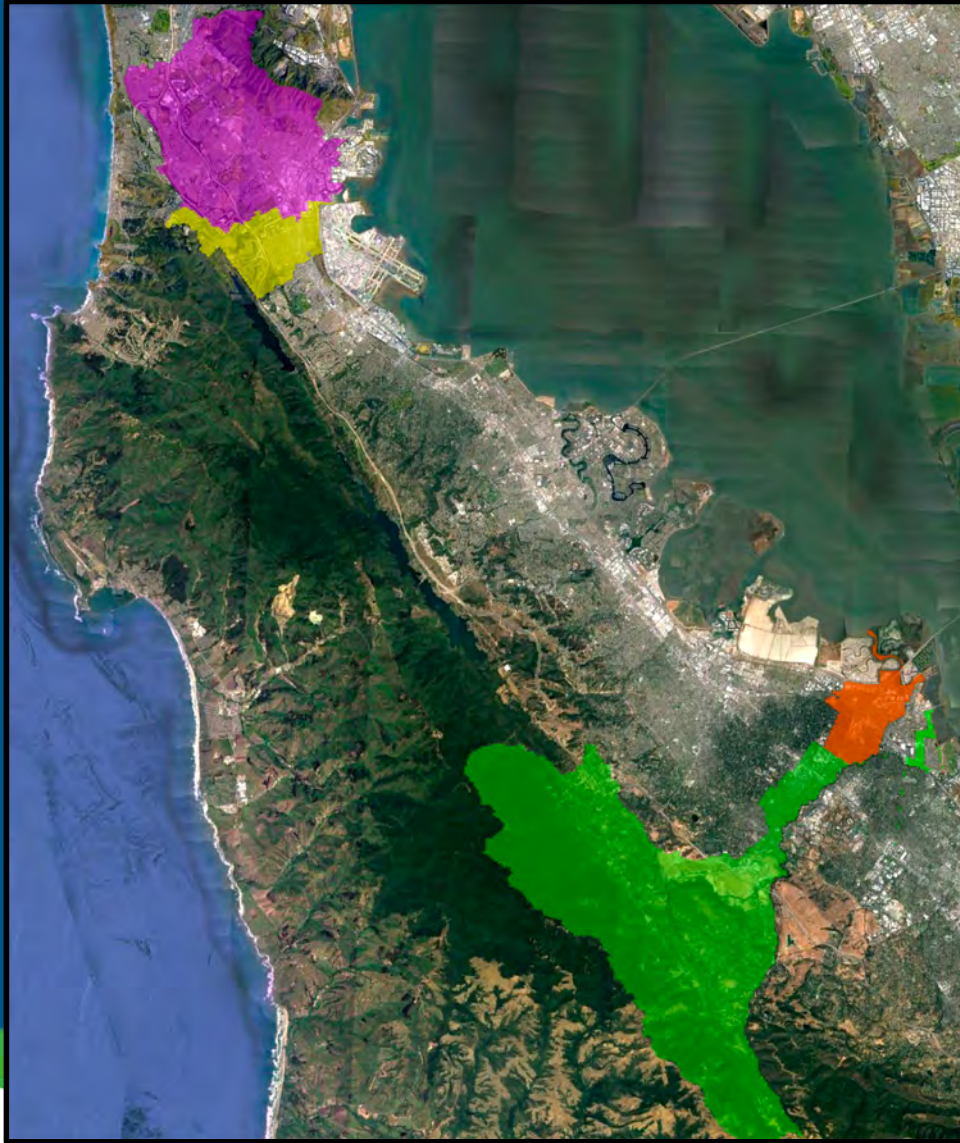
- **Hire staff, complete branding & website, and independently manage our finances**
- **Conduct outreach and explore a stable source of funds for operations & projects**
- **Create a holistic approach to the long-standing flood control zones**
- **Develop new multi-jurisdictional projects and support local efforts**
- **Implement a flood early warning system**
- **Bayfront Canal-Atherton Channel project: Secure funding, land, and permits to enable advertising for construction bids**

Turn waterways and shorelines from liabilities into assets

A holistic approach to the:

- **Threat** – sea level rise & extreme storms brought by climate change
- **Objectives** – reduce threats, integrate waterways & shorelines into communities, utilize green infrastructure and public & private lands
- **Geography** – plan and implement projects within the context of all jurisdictions in the watershed or regional shoreline

Consistent with this philosophy is the District shorthand name: OneShoreline



Flood Zones

- Established in 1959 as a San Mateo Co. District
- Four tax collecting zones comprise ~10% of land in the county within 9 cities and unincorporated areas
- Each zone has unique flooding issues and enhancement opportunities, and a small but significant Bay shoreline area
- Projects in San Francisquito zone are led by the SFCJPA.

Look for opportunities to turn
a long-standing liability...

Colma
Creek

...into a community asset.

Hassell, 2020

San Bruno

**Shoreline & creek
project areas**

on the FEMA flood map

SFO

BART

City of Millbrae

City of Burlingame

San Francisco Bay

**Develop new multi-jurisdictional projects:
Burlingame-Millbrae-SFO
Sea Level Rise Protection Project**

US
101

Broadway

Flood Early Warning System

Modeled on the San Francisquito Creek early warning system, funded by the State

Colma &
San Bruno Creeks

In 2020, we will initiate multi-jurisdictional
Emergency Action Plans in four watersheds,
beginning with Colma Creek

Belmont Creek

Bayfront Canal &
Atherton Channel

Colma Station

San Bruno Station

San Mateo Station

Atherton Station

In 2020, in-stream gauges were installed or
upgraded on Atherton Channel, San Mateo
Creek, Colma Creek, and San Bruno Creek.

Looking into Pescadero Creek, as well as
Butano Creek in regards to post-wildfire
erosion and flood threats.

(E) Pescadero Station

(P) Butano Flasher

(E) Butano Station

(P) Butano Station - Cloverdale Rd

Bayfront Canal-Atherton Channel

Flooding and project history

- 40 significant flood events (1951-2017)
- Project planning began in 2012

Consequences

- Public health and safety
- Street closures
- Property damage
- Economic impacts to jurisdictions
- Regional emergency response required and hindered





Bayfront Canal & Atherton Channel Project



Mussel Rock area,
Daly City

Beach Blvd.
Seawall, Pacifica

Colma Creek
Navigable Slough
San Bruno Creek

SamTrans facility
and SSF shoreline

SFO, Millbrae,
and Burlingame

Countywide
Flood Early Warning System

Belmont Creek
in Twin Pines Park

Redwood Shores,
San Carlos,
San Carlos Airport,
SamTrans

Bayfront Canal &
Atherton Channel

Seymour Channel, HMB

Summary of potential
project activities with
partners through 2021

Planning
Design and CEQA
Construction

With SFCJPA: San Francisquito Creek, SAFER Bay shoreline project