

# Human Services Agency

FY 2019-21 Recommended Budget

**Nicole Pollack**  
June 17th, 2019



COUNTY OF SAN MATEO





# Mission

Enhance the well-being of children, adults, and families by providing professional, responsive, caring, and supportive service



COUNTY OF SAN MATEO



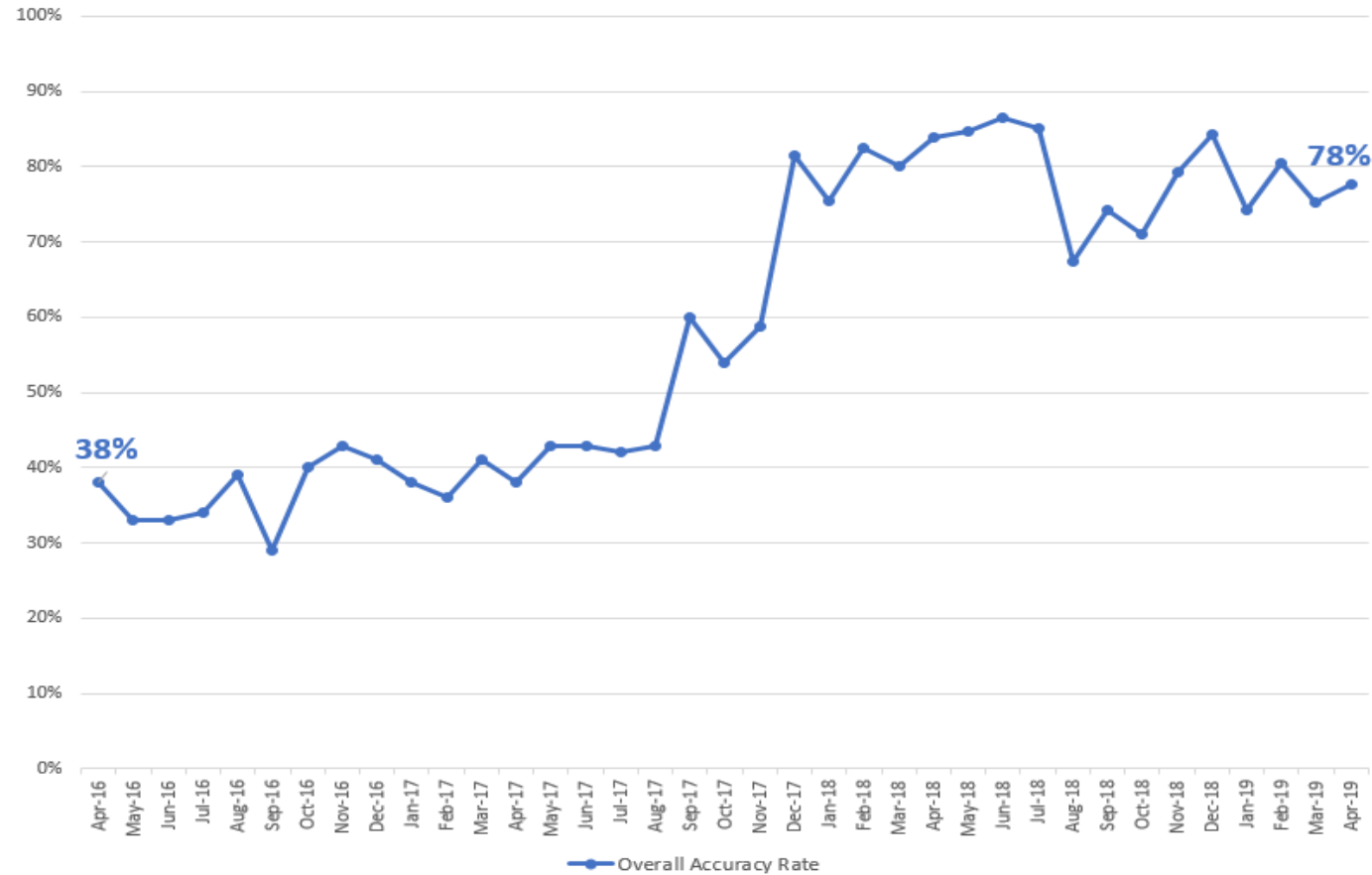


# FY 2017-19 Accomplishments



## COUNTY OF SAN MATEO HUMAN SERVICES AGENCY

Quality Assurance Case Record Reviews  
Apr-2016 thru Apr-2019



COUNTY OF SAN MATEO





# FY 2017-19 Accomplishments





# FY 2019-21 Priorities: Outreach & Enrollment

**DO YOU RECEIVE SSI?**

**DON'T MISS OUT ON FOOD BENEFITS**



Beginning June 1, 2019  
SSI recipients may be eligible  
for **CalFresh Food** benefits.

#### What is CalFresh Food?

CalFresh Food helps people with low-income buy the nutritious food they need for good health. Recipients can buy food any grocery store or farmers market that accepts EBT.

#### How do I know if I am eligible?

- Click, Call or Come in to your local county office.
- Complete an application – by phone, on-line, or in person.
- Complete an interview – by phone or in person
- Provide proof of income and expenses, if needed.
- The county will determine your eligibility in 30 days or less.

#### Does CalFresh Food change my SSI benefits?

There is **NO CHANGE** or reduction to SSI/SSP amounts.

Call 1-800-223-8383

Click [GetCalFresh.org](https://www.getcalfresh.org)  
to apply online

Come in/find an office at  
[hsa.smcgov.org/office-locations](https://hsa.smcgov.org/office-locations)

For other languages, or reasonable accommodations, find an office at  
[CalFreshFood.org](https://www.CalFreshFood.org). For speech and/or hearing assistance call 711 Relay.

Funded by USDA, an equal opportunity provider and employer.

COUNTY OF SAN MATEO  
HUMAN SERVICES AGENCY



# COUNTY OF SAN MATEO



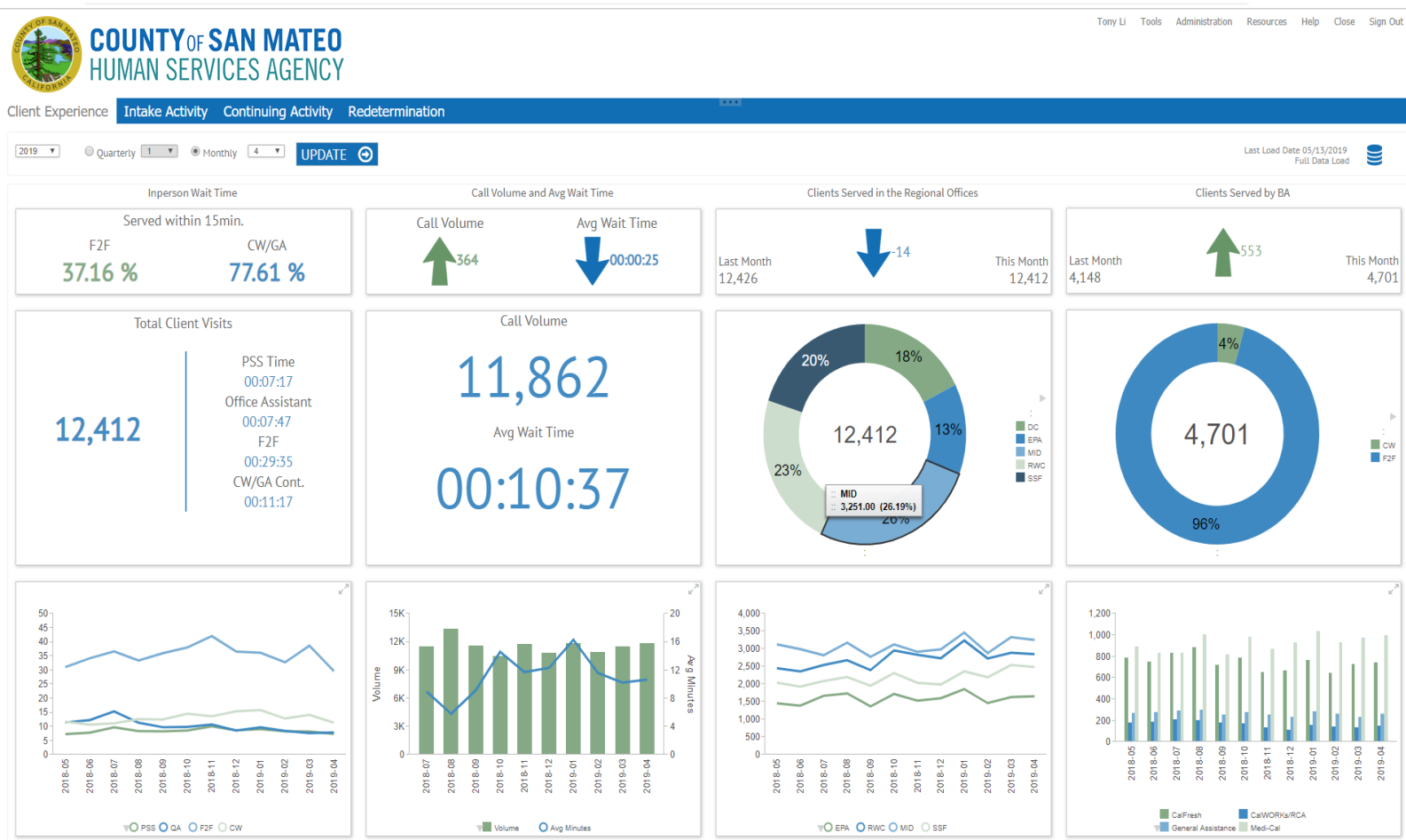


# FY 2019-21 Priorities: Outreach & Enrollment





# FY 2019-21 Priorities: Continuous Improvement





# FY 2019-21 Priorities: Homelessness



Homeless Living in RVs



Shelter Expansion



Shelter Expansion



# FY 2019-21 Innovations



Virtual Reality Training



Catering Connection Expansion



Receiving Home Conversion



# FY 2019-21 Significant Budget Changes



Safe Harbor Remodel



Transitional Youth Housing



# FY 2019-20 Budget Overview

	FY 2018-19 Revised	FY 2019-20 Recommended	Amount Change	Percent Change
Total Sources	210,506,527	210,099,012	(407,515)	-0.2%
Total Requirements	260,581,252	267,135,223	6,553,971	3%
Net County Cost	50,074,725	57,036,211	6,961,486	14%
Total Positions	766	768	2	0.3%

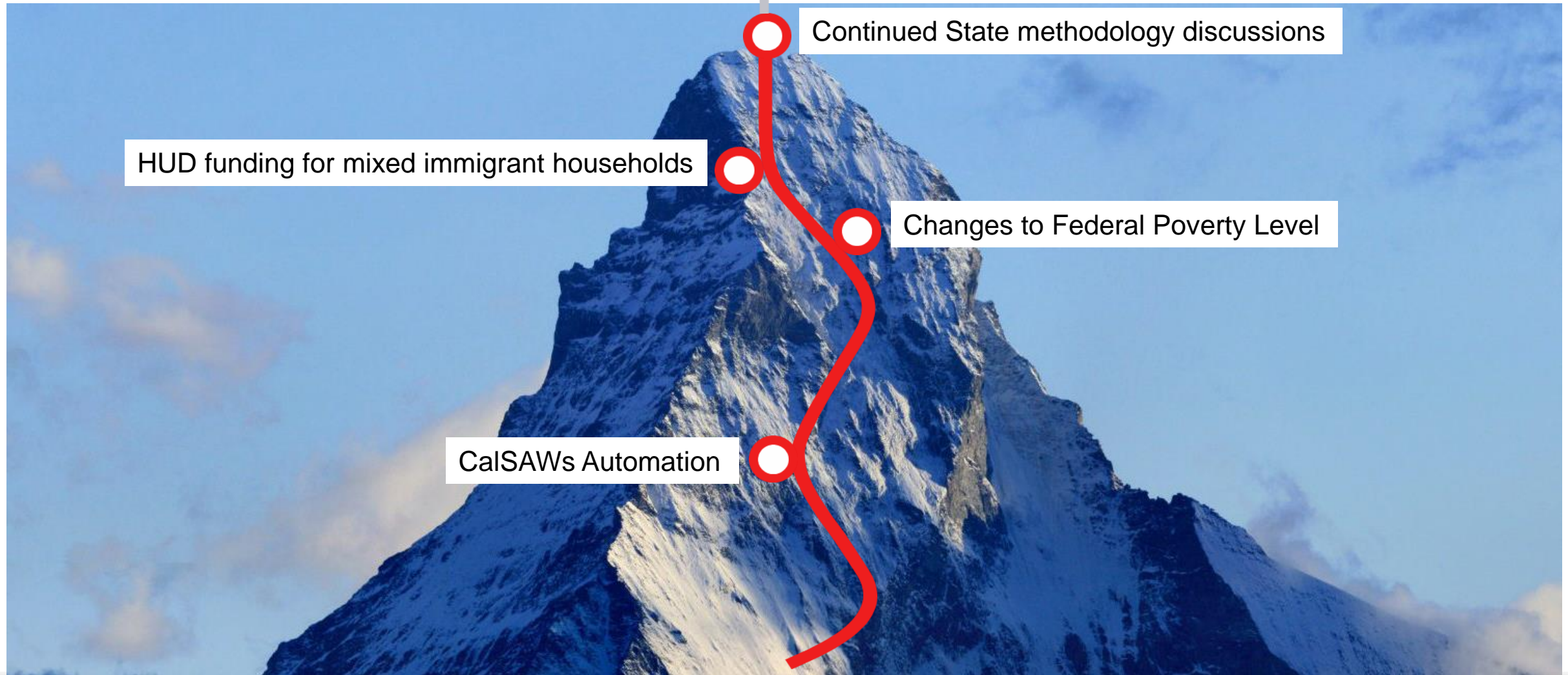


# FY 2020-21 Budget Overview

	FY 2019-20 Recommended	FY 2020-21 Preliminary Recommended	Amount Change	Percent Change
Total Sources	210,099,012	199,130,856	(10,968,156)	-5%
Total Requirements	267,135,223	260,066,741	(7,068,482)	-3%
Net County Cost	57,036,211	60,935,885	3,899,674	7%
Total Positions	768	768	0	0



# FY 2019-21 Challenges







During The Year.

Growing up in the system, your first Afraid, Scared  
and Nervous. Understand ~~it~~ It's not your fault, your  
just a victim in all of this. I want you to know  
It's going to get better, because everyday the Lord  
gives you, is a chance to show people that even  
though your in the system your somebody worth  
caring for, your somebody worth believing in.  
When you become a full grown Adult your going  
to do so much in this world, and you will  
not Allow anyone to tell you; you can't Achieve  
your dreams and Aspirations. Stay Strong  
Little one.

-Love Diquan R. [Signature]

# Conclusion