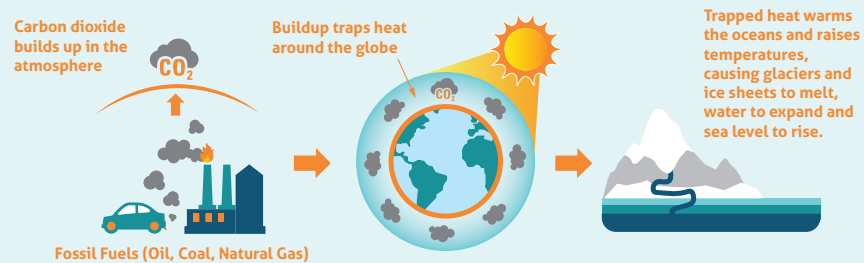


IT'S TIME TO GET SEA LEVEL WISE

San Mateo County is a vibrant place to live, work, and play. The County is home to beaches, parks, trails, diverse neighborhoods, as well as the San Francisco International Airport, the Port of Redwood City, and numerous renowned high-tech companies and businesses. Our network of infrastructure contains roads and highways, levees, electric substations, transmission towers, wastewater treatment plants, and pump stations that are essential to day-to-day community and economic functions. While the changing climate and rising seas poses many risks to people and places in San Mateo County, we can plan ahead to create communities of the future which can rise above the tide!

WE CAN RISE TO THE CURRENT CHALLENGE



In the near term, American researchers project sea levels in San Mateo County to rise 6 inches by 2030 and 1-2 feet by 2050. This could mean more disruptions to our daily life and greater community-wide and health impacts. So whether you live close to the shore or inland, sea level rise will impact all of us in San Mateo County, which is why we are taking practical common sense steps to address problems facing our environment today and in the future.

LIVING UP TO OUR DUTY TO PROTECT SAN MATEO COUNTY

We must protect our people and the places we love from being harmed and take care of our natural resources so they can continue to function and be enjoyed by our future generations. Understanding how sea level rise will affect San Mateo County residents, businesses, and the community services and infrastructure we all rely on is the first and most crucial step in building prepared, healthy and safe communities—the **San Mateo County Sea Level Rise Vulnerability Assessment** aims to do just that.



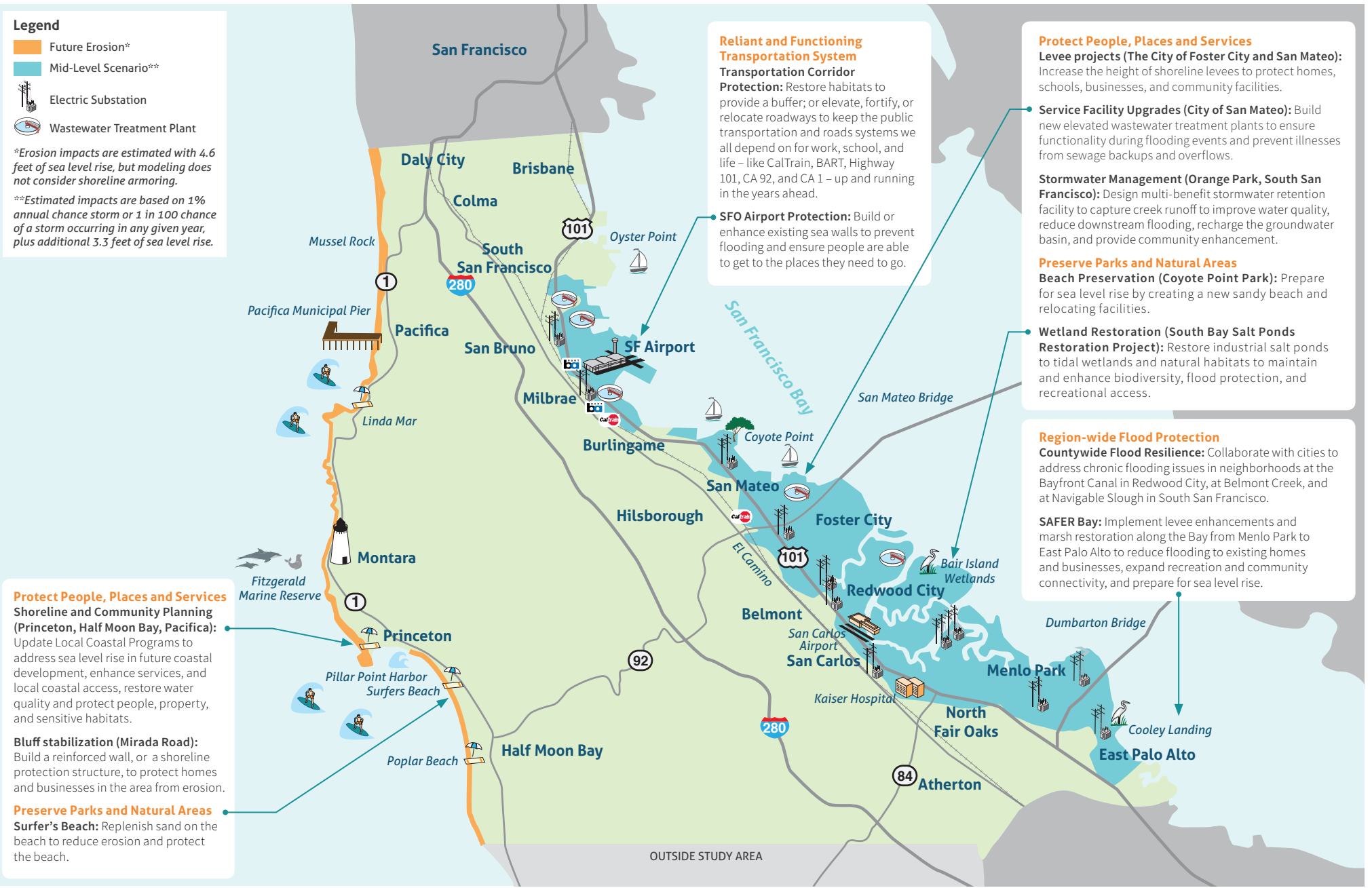
THESE VALUABLE INTERCONNECTED PLACES NEED OUR PROTECTION

Legend

- Future Erosion*
- Mid-Level Scenario**
- Electric Substation
- Wastewater Treatment Plant

*Erosion impacts are estimated with 4.6 feet of sea level rise, but modeling does not consider shoreline armoring.

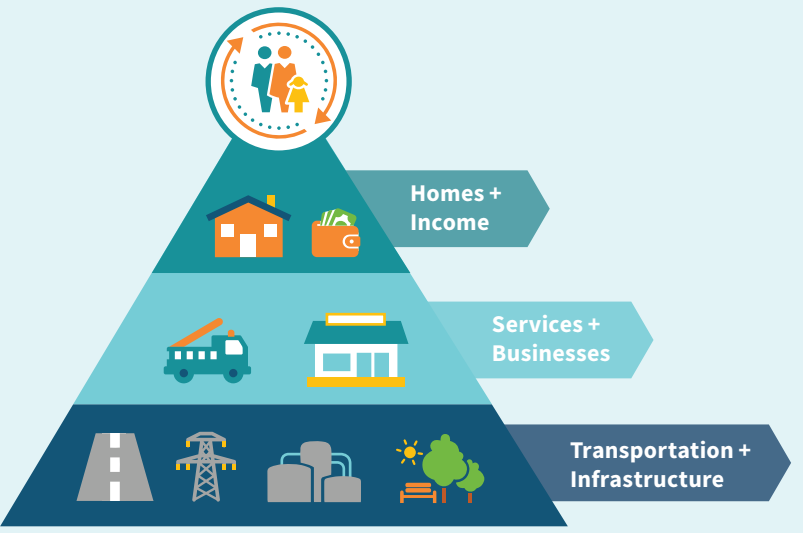
**Estimated impacts are based on 1% annual chance storm or 1 in 100 chance of a storm occurring in any given year, plus additional 3.3 feet of sea level rise.



Our networked infrastructure and complex grid of services mean that sea level rise affects us all - a flooded highway, wastewater treatment plant or electrical substation could temporarily shut down businesses, close roads and affect neighborhoods and households throughout the county. There are solutions we can take to reduce these community-level risks. By working together, we can protect our community's many assets, including neighborhoods, businesses, parks, and beaches – places we all love. See the map for examples of what is at risk from sea level rise, and for solutions already underway or planned to protect our communities and the environment.

WE NEED TO PROTECT OURSELVES TOO

Our current built environment which offers housing, transportation, community spaces, and services, and the biodiversity of our wetlands, recreational areas, beaches, and forests contribute richly to our quality of life. They enhance our physical and mental wellbeing, and are a central part of what makes San Mateo County such a wonderful place to live, work, and learn. Our community needs to work together to ensure that we continue to be mentally and physically healthy.



We support mental health and prevent social and economic disruption by protecting our homes, infrastructure, businesses, and community services. These enable us to work, access support systems, and meaningfully engage with our neighbors and communities. Avoiding disruption and displacement also reduces risks of stress, depression, suicide, and chronic illness.

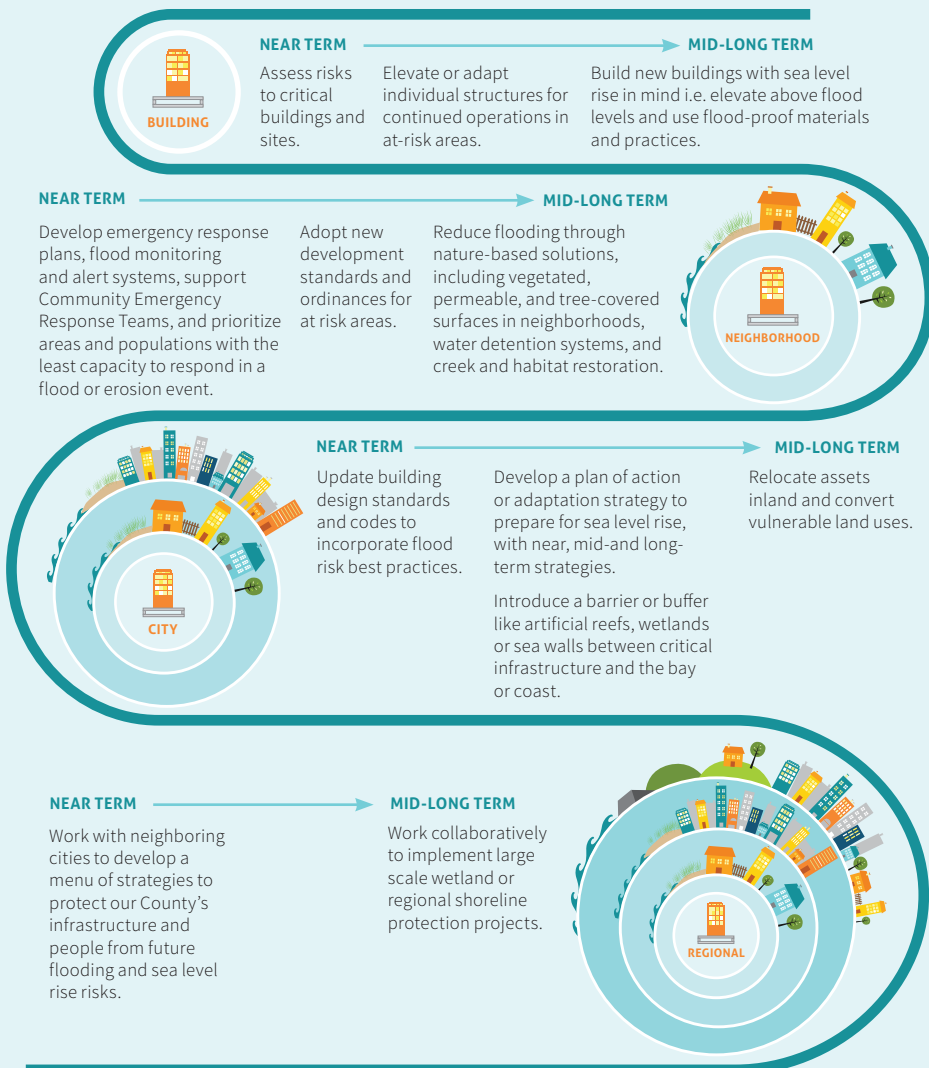
We promote physical health and wellness by ensuring access to medical services and recreational areas, and by staving off post-flood related health hazards. Planning ahead can limit instances of trauma, drowning, carbon monoxide poisoning, mold-induced respiratory problems, water-borne diseases, and food-borne illnesses caused by food contamination and spoiled perishables.

If we fail to act, the health and wellness of over 100,000 people will be impacted. We can make a difference by handling problems before they get worse, especially for those who have limited resources to prepare and recover including our children, elderly, lower income residents, and those who face unstable housing conditions and with limited access to vehicles. Taking action now is not only the right thing to do, it is also essential for the quality of life of our entire community and in the best interest of our future generations.

WHAT'S NEXT: DEVELOPING AN ADAPTATION STRATEGY

Now is the time to prepare for sea level rise. We need to develop and implement a preparedness plan for San Mateo County that carefully evaluates multiple potential actions, and the coordinated efforts to put our plans into action.

Where should we start? Many efforts to prepare for future impacts are already underway. Actions are generally needed at building or site specific, neighborhood, city and regional scales across three areas **(1) emergency preparedness efforts, (2) shoreline and site-specific strategies, and (3) policies, plans, and procedure updates.**



MOVING FORWARD TOGETHER

Let's work together to keep sea level rise at bay. While we adapt to changes, we must also meet the challenge where it starts by working to reduce CO2 emissions. It's time to get involved. Here's how.



Everyone

- » Visit [SeaChangeSMC.com](https://seachangesmc.com) to learn more and to understand the risks
- » Subscribe to our newsletter (seachangesmc.com/get-involved/) and join us on Facebook (facebook.com/groups/SeaChangeSMC)



Residents

- » Attend future Sea Change SMC events like 'Shrinking Shores' or 'King Tides'. Visit [SeaChangeSMC.com](https://seachangesmc.com) for more information
- » Share information about sea level rise preparedness with your neighbors
- » Participate in your city's community emergency response team. To sign up visit: <https://smccacert.samariteam.com/>
- » Organize as a neighborhood to prepare for storm emergencies
- » Visit your city website to learn about and participate in planning and adaptation efforts in your community
- » Take public transit or ride a bike at least once a week
- » Opt up to 100% renewable electricity with Peninsula Clean Energy's Eco100 (peninsulacleanenergy.com)



Non-profits and Businesses

- » Evaluate and prepare for risks for your business by conducting a vulnerability assessment
- » Develop a Climate Action Strategy to reduce carbon dioxide emitted through your business operations
- » Offer incentives to employees to take transit of bike to work
- » Join the Sea Change SMC efforts to learn more about adaptation strategies and support local efforts to protect your businesses



County and City Government/Special Districts

- » Integrate adaptation strategies into policies, plans, building codes and operations
- » Complete local vulnerability assessments and develop plans to adapt key facilities and protect the shoreline
- » Work with other jurisdictions to identify and prioritize city-scale and regional shoreline protection measures
- » Develop targeted neighborhood plans to build safe and stronger communities
- » Develop a targeted public outreach campaign to increase awareness of climate change impacts and sea level rise
- » Locate businesses and homes close to transit
- » Invest in public transit and improve network of bike lanes and pedestrian safety



Elected Officials

- » Be a champion for sea level rise and allocate resources for staff to undertake efforts to plan and prepare for sea level rise and flooding impacts
- » Be an advocate for vulnerable populations and prioritize efforts such as energy efficiency and building retrofits, and flood preparedness resources for those with less capacity to respond to sea level rise

SHORING UP SAN MATEO'S TOMORROW STARTS TODAY

The County of San Mateo established the Sea Change SMC Initiative to facilitate coordinated Countywide action on sea level rise. Sea Change SMC will work to bring together and provide resources to local governments and agencies within the County on the issue of sea level rise and envisions this as a three-phase process:

SEA CHANGE SMC ACTION PLAN



Taking practical, common sense steps to address problems facing our environment today is in the best interest of future generations. We can't afford to neglect our people and the valuable natural resources and built environment that make San Mateo County a thriving place to live in. We must instead work together to manage our resources responsibly to ensure they can be depended on and enjoyed long into the future. Let's get started – to meet the challenge of sea level rise, we're going to need all hands on deck!

CONTACT US

- » seachangesmc@smcgov.org
- » www.facebook.com/groups/SeaChangeSMC

SEA CHANGE
SAN MATEO COUNTY

OFFICE OF
SUSTAINABILITY
COUNTY OF SAN MATEO

SEA CHANGE
SAN MATEO COUNTY

Coastal
Conservancy

A PREPARED AND STRONGER COMMUNITY

The San Mateo County
Sea Level Rise Vulnerability
Assessment

We value this area and all that it has to offer, which is why the County of San Mateo created a new program to help us prepare for the challenge of sea level rise. The County's Sea Change program (Sea Change SMC) is focused on building stronger and better prepared communities and ensuring a healthy and prosperous future for generations to come.