






Notes:

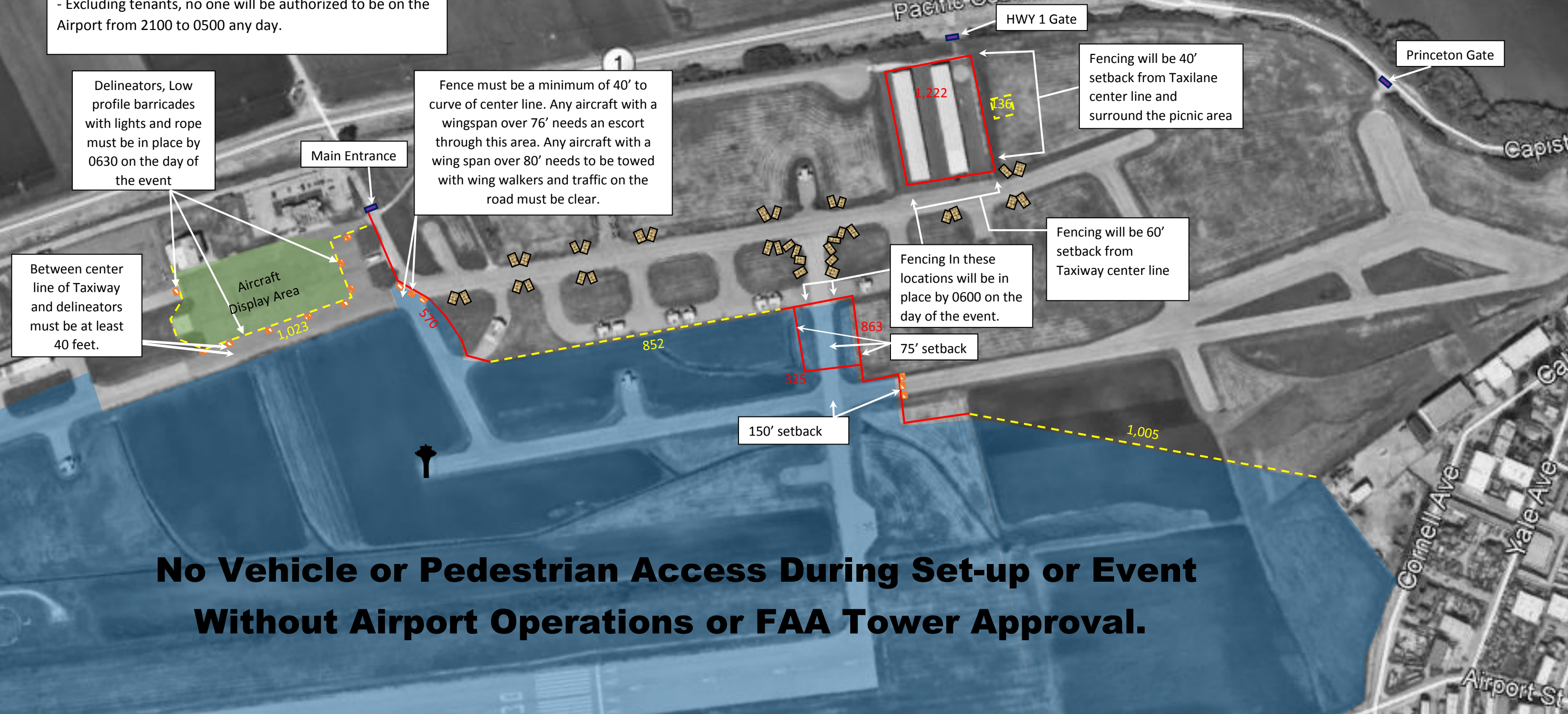
- Set up is permitted no sooner than three days prior event
- Friday at noon will be the fencing walk through unless specified differently below.
- Tenants can move aircraft to/from hangars until 0600 day of the event.
- Break down of fencing will happen the day after the event. Airport staff will open path for tenants once field is clear on day of event.
- Excluding tenants, no one will be authorized to be on the Airport from 2100 to 0500 any day.

Pacific Coast Dream Machine 2019 Event Map

0600 Day of Event

KEY

-  - Low profile barricade w/ lights
-  - Hay bales to protect taxiway lights
-  - Hard interlocking fencing (FT=##)
-  - Delineator/ rebar and rope (FT=##)
-  - Location of ATCT and support equipment



**No Vehicle or Pedestrian Access During Set-up or Event
Without Airport Operations or FAA Tower Approval.**