



COUNTY OF SAN MATEO
Inter-Departmental
Correspondence
County Manager



Date: March 30, 2016
Board Meeting Date: May 10, 2016
Special Notice / Hearing: None
Vote Required: Majority

To: Honorable Board of Supervisors

From: John L. Maltbie, County Manager

Subject: Acceptance of Pacific Gas & Electric Easement Quitclaim over County
Assessor's Parcel Number 052-341-240

RECOMMENDATION:

Adopt a Resolution authorizing the President of the Board of Supervisors to execute a Certificate of Acceptance of a Quitclaim Deed from Pacific Gas & Electric to the County over County Assessor's Parcel Number: 052-341-240.

BACKGROUND:

In 1995, the City of Redwood City and County cooperated in the reconstruction of Winslow Street to realign the road to improve traffic safety. On July 10, 2010 the City of Redwood City vacated a portion of Winslow Street that was superseded by the relocation, reserving a 20 foot wide gas line easement to Pacific Gas & Electric (PG&E). PG&E owns, operates and maintains Gas Transmission Pipeline 101. A portion of Pipeline 101, approximately 200 feet in length and measuring between 24 and 36 inches in diameter, crossed the County's motor pool site.

On March 11, 2014, the County and PG&E entered into an agreement to deactivate and remove PG&E's facilities from County property to facilitate development of the motor pool site for the County's new Emergency Dispatch and Response Center. PG&E removed all of the Pipeline except a 55 foot segment. This segment was filled with a cement slurry and buried in place. After completing the project, PG&E discovered that 18 feet of this severed and deactivated segment remained outside of the Winslow Street right of way on County property.

.

.

.

DISCUSSION:

Now that PG&E's facilities have been removed, PG&E is quitclaiming any and all rights in the 20 foot pipeline easement (originally reserved by the City of Redwood City) to the County. As part of the County's acceptance of the quitclaim deed, the County will be accepting responsibility for the 18 foot strip of deactivated pipe that remains on County property. The 18 foot strip is located at the northwesterly intersection of Winslow Street and abandoned Fuller Street, immediately adjacent to the sidewalk. This area is well outside the footprint for the new Emergency Dispatch and Response Center; there are no plans for development in this area.

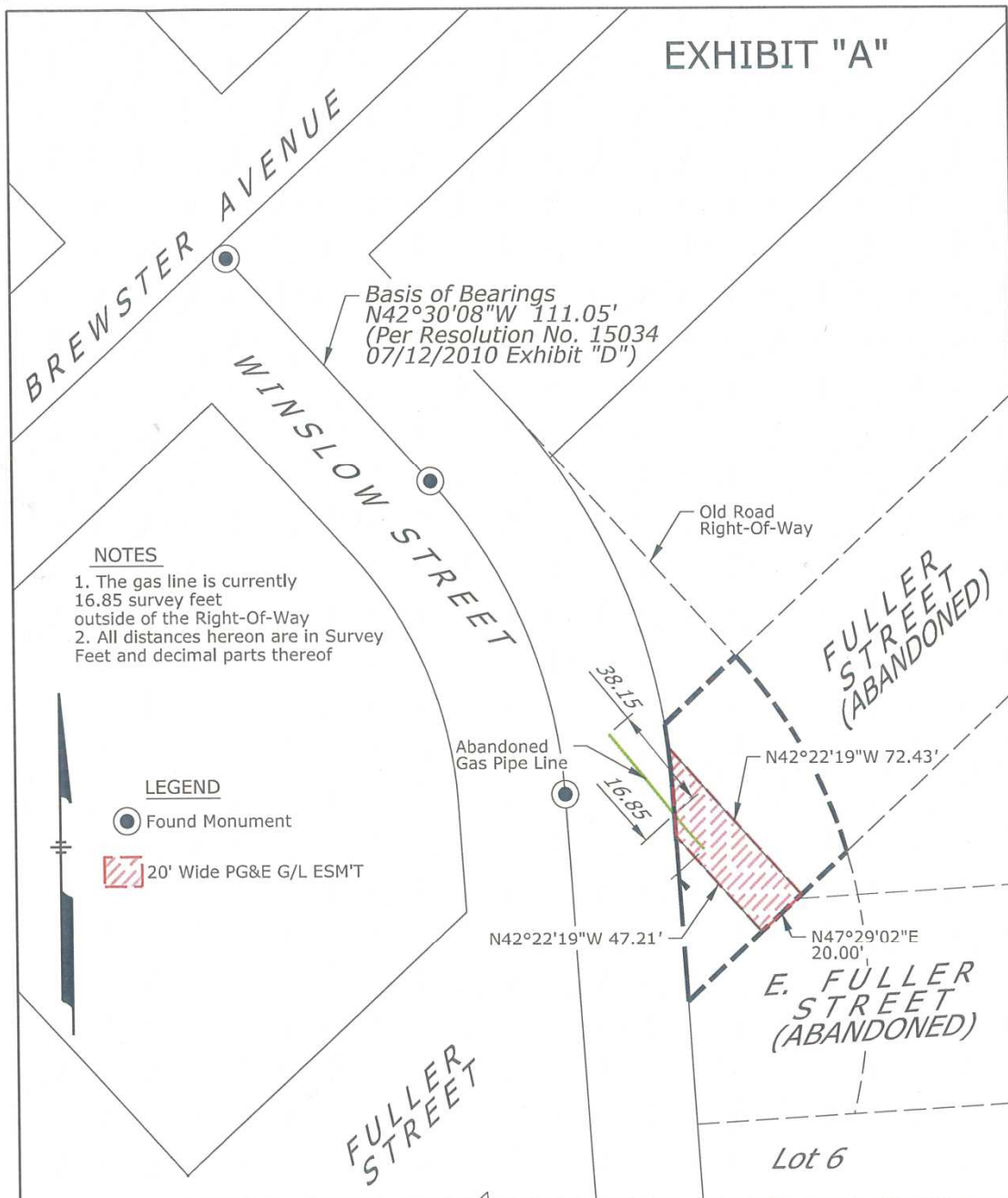
The easement to be quitclaimed is on file with the Clerk of the Board.

County Counsel has reviewed and approved the Resolution and Deed as to form. The Director of Public Works concurs in this recommendation.

Acceptance of the Quitclaim from PG&E contributes to the Shared Vision of a Collaborative Community by relocating gas transmission facilities to the right of way and providing for the development of a public safety project to better serve the community.

FISCAL IMPACT:

The costs for the gas pipe removal were paid out of the non-departmental budget and staff costs to handle the quitclaim were paid by the Department of Public Works.



Applicant: PACIFIC GAS & ELECTRIC CO.				SCALE 1"=50'	DATE 2-26-2016
SECTION NE/NW/35	TOWNSHIP 07 S	RANGE 01 W	MERIDIAN MDB&M	COUNTY OF: SAN MATEO	CITY OF: REDWOOD CITY
F.B.: N/A				DR.BY: RRRD	CH.BY: DAN9
PLAT MAP REFERENCES				PG&E PENINSULA DIVISION	42624321 AUTHORIZ SJL-15329 DRAWING NO.