

**COUNTY<sub>OF</sub> SAN MATEO**





# **COUNTY** OF **SAN MATEO**

## COUNTY MANAGER'S OFFICE

### OFFICE OF SUSTAINABILITY

Jim Eggemeyer, Director  
June 22, 2015

**COUNTY** OF **SAN MATEO**



# Office of Sustainability

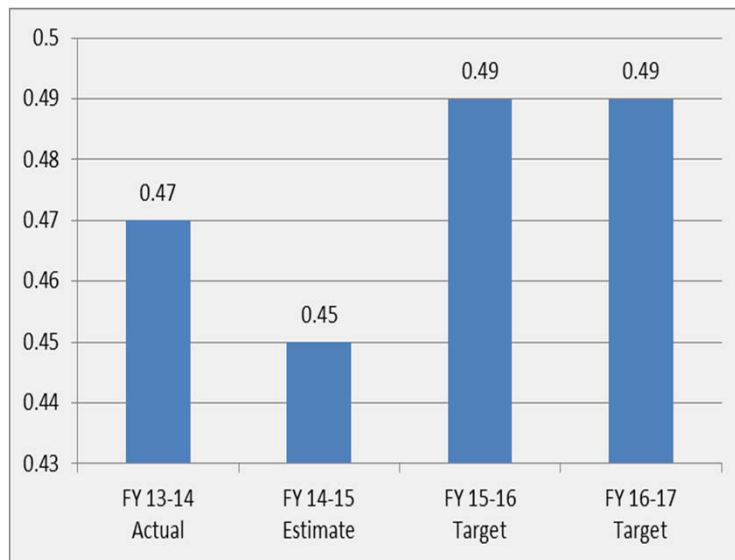
## Mission Statement:

The mission of the Office of Sustainability is to explore and implement policies and programs that promote and lead the way to a sustainable future by providing resources to foster and protect the environment, health and safety of the community on an ongoing basis.

# Office of Sustainability

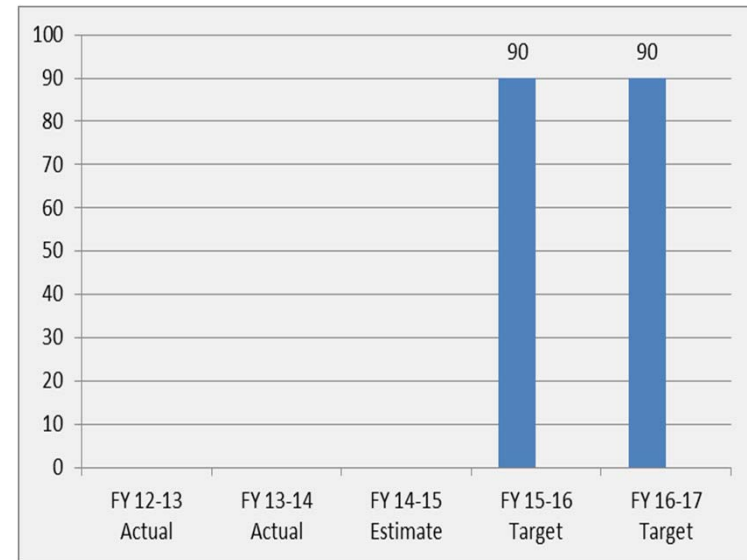
- Key Indicator 1

San Mateo County Energy Watch Program  
Cost per Kilowatt Hour Saved



- Key Indicator 2

Customer Satisfaction Rated as Good or Better



## FY 2013-15 Accomplishments

- Office of Sustainability Opens July 2014
- Coordinated Stormwater Compliance
- Sustainability Projects
- Commute Alternatives Program



**BAY AREA** Regional Energy Network



**Home Upgrade**

Energy Upgrade California®

COUNTY OF SAN MATEO



## FY 2013-15 Accomplishments

- Climate Action Plan Implementation



- Community Choice Energy Program
- Sea Level Rise/Climate Change Adaptation Project

**SEA CHANGE**  
SAN MATEO COUNTY

COUNTY OF SAN MATEO



# FY 2013-15 Accomplishments

- NFO Forward
  - Middlefield Road Redesign
  - Public Art Workgroup
- “Report It!” Launched



COUNTY OF SAN MATEO

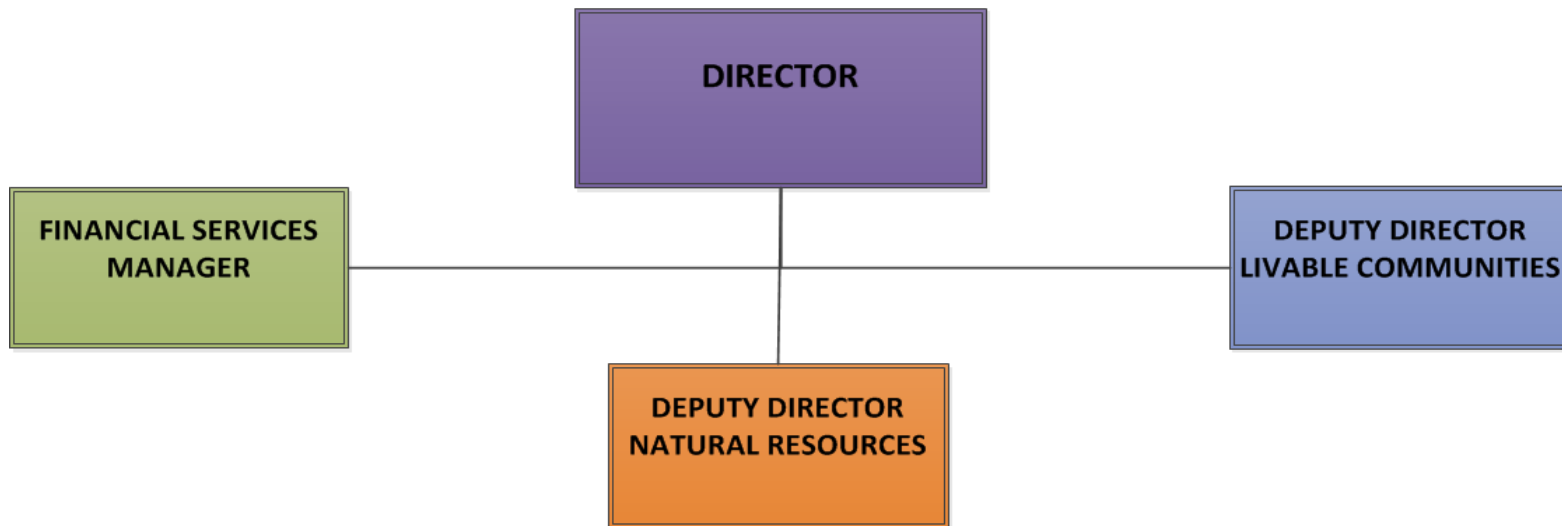


## FY 2015-17 Challenges

- Office of Sustainability 2.0 - Merging Programs:
  - Recycleworks & Energywatch
  - North Fair Oaks Forward & Pescadero Outreach
  - Office of Sustainability
- Stormwater MRP 2.0
- Sea Level Rise Vulnerability Assessment
- Community Choice Energy



## OFFICE OF SUSTAINABILITY



# Sustainability Best Practices Framework



 **INSTITUTE FOR  
LOCAL GOVERNMENT**

**Sustainable Communities**

**COUNTY OF SAN MATEO**



## FY 2015-17 Priorities

- Office of Sustainability 2.0 Merger
- Community Choice Energy – Phase 2
- Energywatch Conservation Program
- “CCC” – Communication, Collaboration, and Coordination
- Sustainability Outreach
- Groundwater Management Assessment

# FY 2015-17 Budget Overview

	FY 2014-15 Revised	FY 2015-16 Recommended	Amount Change	Percent Change
Total Sources	\$6,944,810	\$18,470,402	\$11,525,592	166%
Total Requirements	\$7,780,281	\$23,496,338	\$15,716,057	201%
Net County Cost	\$835,471	\$5,025,936	\$4,190,465	502%
Total Positions	3	20	17	566%

# FY 2015-17 Budget Overview

	FY 2015-16 Recommended	FY 2016-17 Recommended	Amount Change	Percent Change
Total Sources	\$18,470,402	\$11,839,059	(\$6,631,343)	(36%)
Total Requirements	\$23,496,338	\$17,052,996	(\$6,443,342)	(27%)
Net County Cost	\$5,025,936	\$5,213,937	\$188,001	4%
Total Positions	20	20	0	0%

**Questions?**  
**Thank You!**

**COUNTY** OF **SAN MATEO**



**COUNTY<sub>OF</sub> SAN MATEO**

