

**COUNTY<sub>OF</sub> SAN MATEO**





# First 5 San Mateo County

**Kitty Lopez**

November 15, 2016

COUNTY OF SAN MATEO



# First 5 San Mateo County



- **Vision**

Success for Every Child

- **Mission**

First 5 San Mateo County promotes positive outcomes for young children and their families through strategic investments, community leadership and effective partnerships.

COUNTY OF SAN MATEO



## Proposition 10 States:



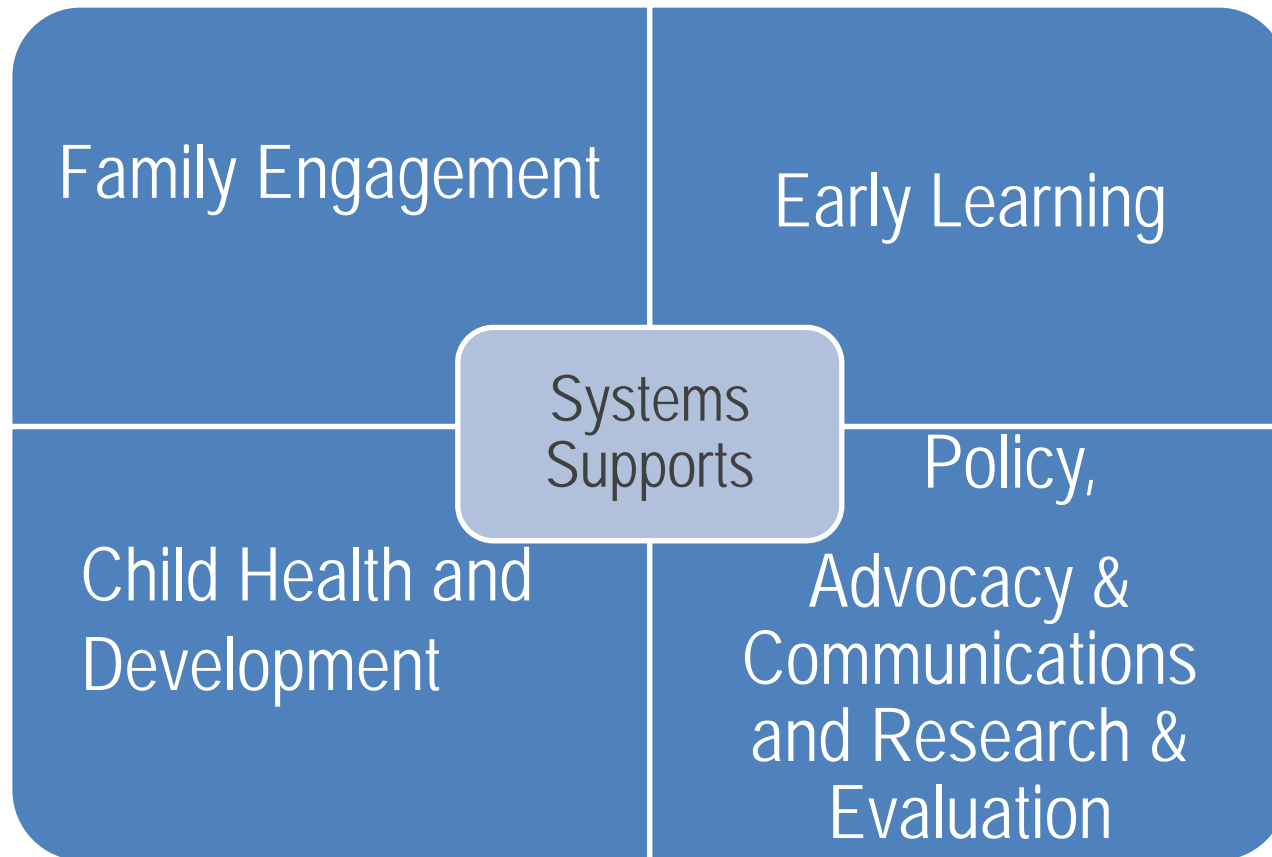
- Create and implement an integrated, comprehensive, and collaborative system for children
- All information and services are accessible from any point in this system
- Emphasize local decision making and flexibility
- Eliminate duplicate administration

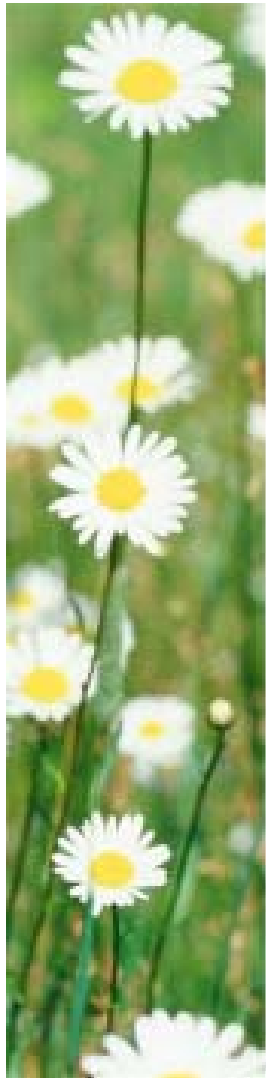
# First 5 San Mateo County Desired Outcomes



- San Mateo County will give priority to young children and their families;
- Communities provide a safe and healthy environment for young children;
- Children have access to high-quality early care and education settings;
- Families feel connected to and supported by their community and able to nurture their child's health and development;
- Children have healthy attachments to their parents and caregivers; and
- Children have access to and are utilizing appropriate health care services to meet their health and developmental needs.

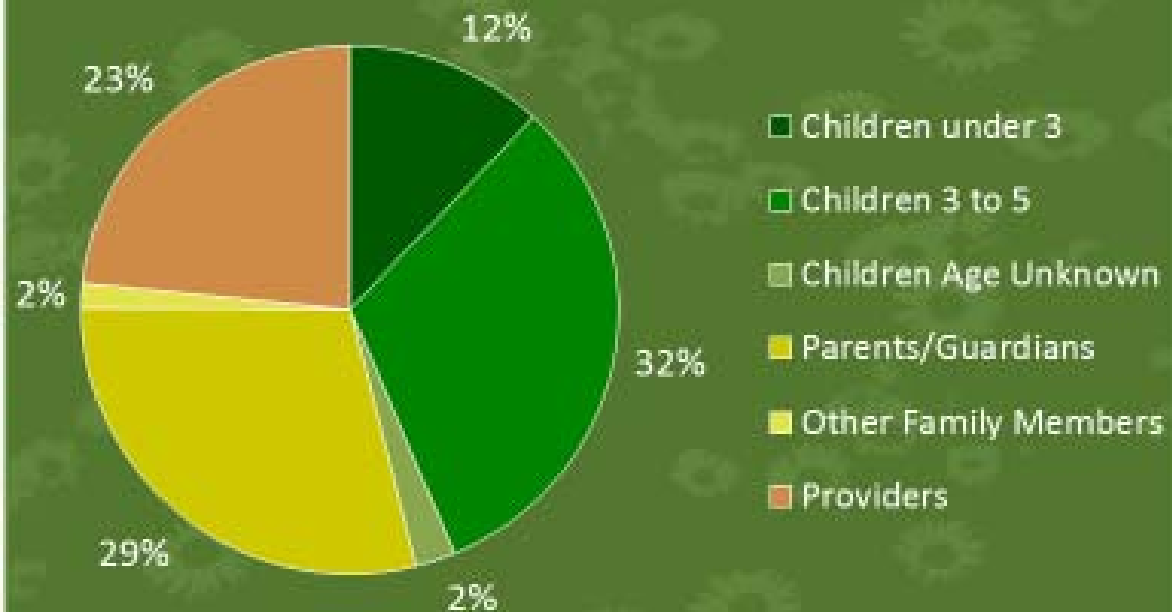
# First 5 Focus Areas





## Clients Served

N = 10,344



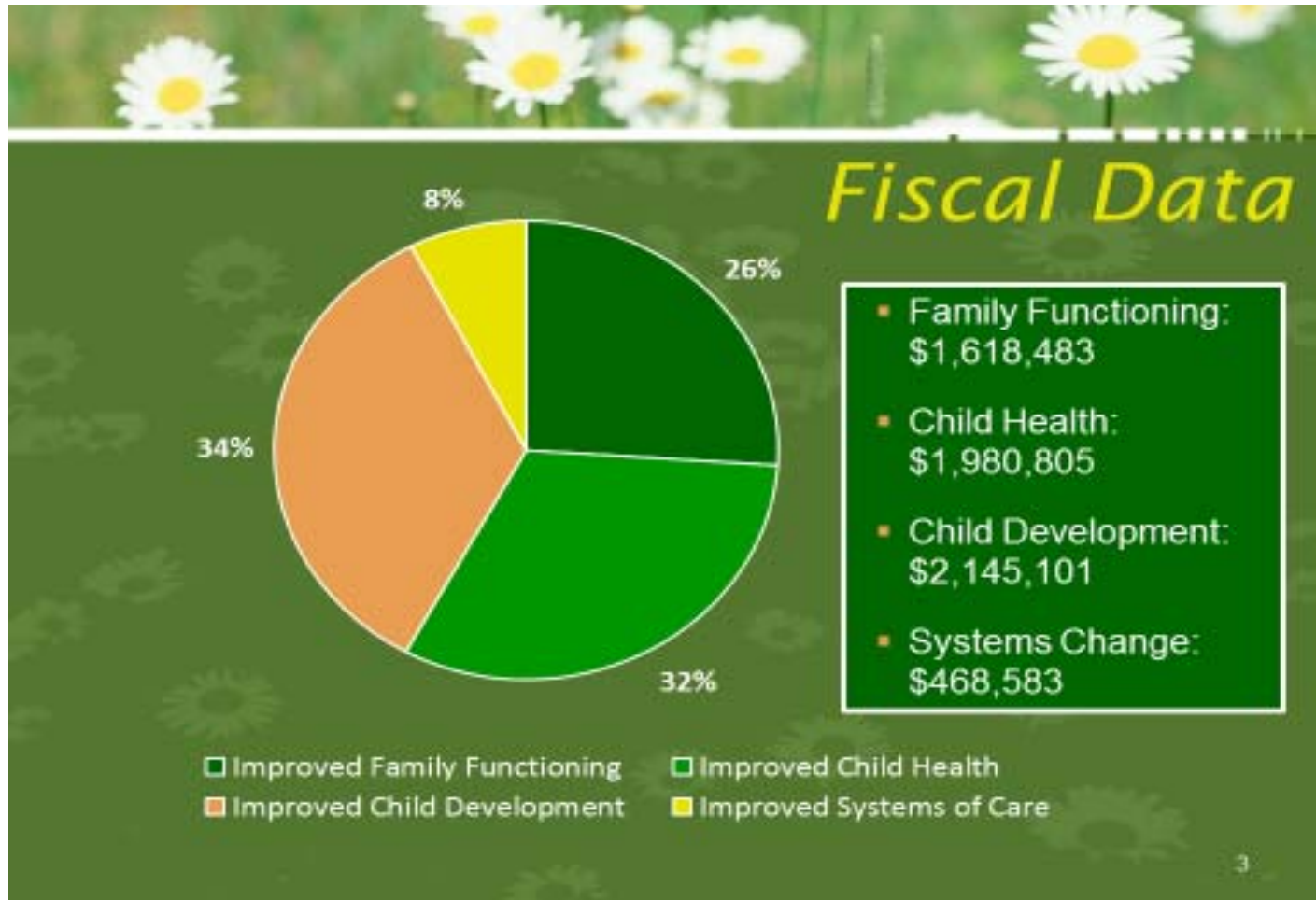
FSSMC also distributed **4,163** Kits for New Parents, Bringing the total service number to **14,507**

4

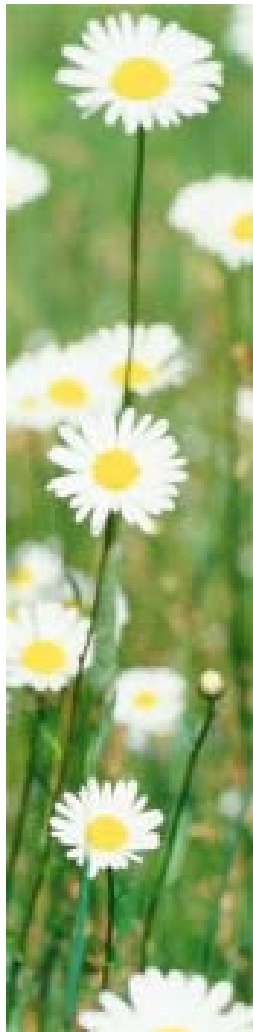
COUNTY OF SAN MATEO



# FY 2015-16: Total Expenditures: \$6,212,971

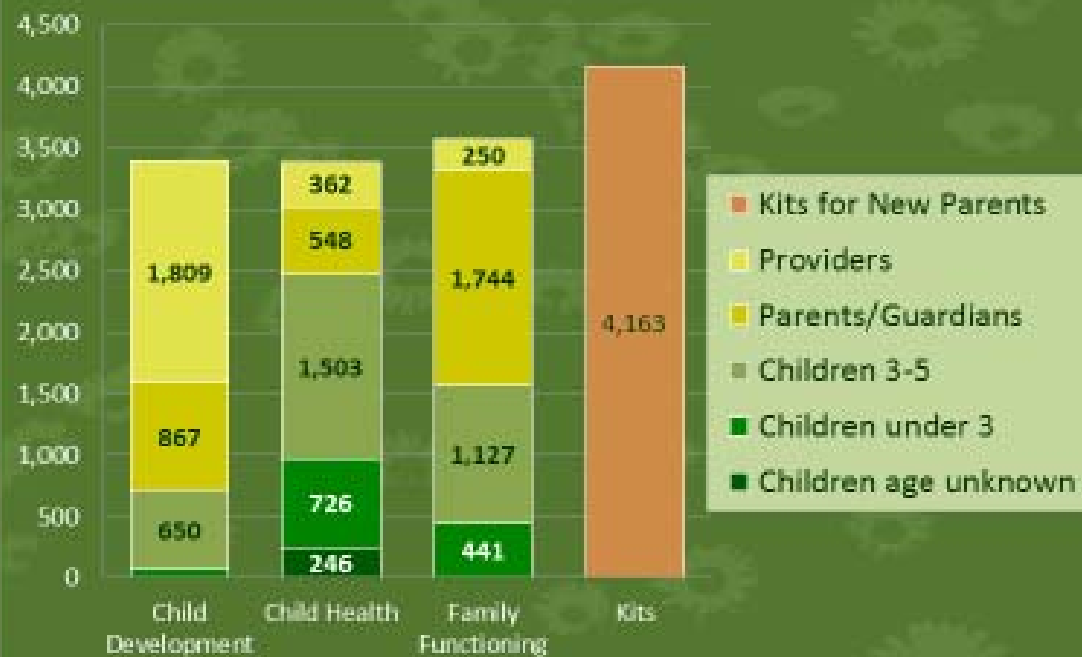


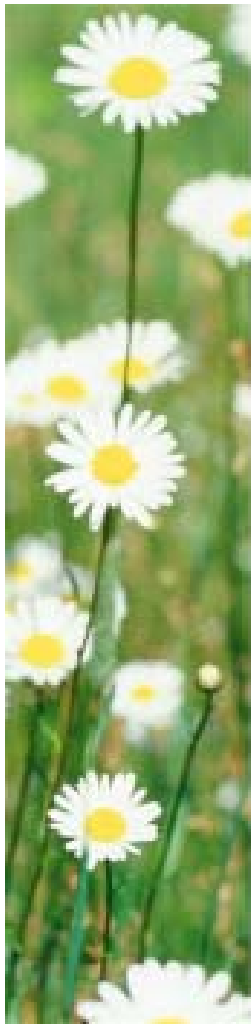




## Clients Served

N = 14,507





## Family Demographics

<i><b>Race/Ethnicity</b></i>	<b>First 5 SMC</b>	<b>San Mateo County</b>
Asian	4%	28%
Black/African-American	2%	2%
Latino	71%	25%
Pacific Islander	2%	1%
White	6%	40%
Multiracial	3%	5%
Other/Unknown	9%	12%
<i><b>Language</b></i>	<b>First 5 SMC</b>	<b>San Mateo County</b>
English	21%	53%
Spanish	66%	20%
Asian Languages	1%	19%
Other/Unknown	11%	7%

6

## 2016 Initiatives:

- Big Data Project Pilot in Redwood City
- Early Learning Facilities Needs Assessment
- Developmental Screening Survey
- Technology & Early Learning Survey
- New Client Data Collection System
- Oral Health Strategic Plan & Community Partnership
- Communications & Implementation Plan
- Persimmony Grants Management Implementation



# Early Learning & Big Lift Investments

**First 5**

- Prenatal to 5
- County-wide
- Whole child, whole family
- Quality continuum framework (QRIS)

**FY 15-18 - \$4,800.00+**

- 3 and 4 year olds
- Specific school districts
- Center-based preschool
- Quality continuum framework (QRIS)

**The Big Lift**

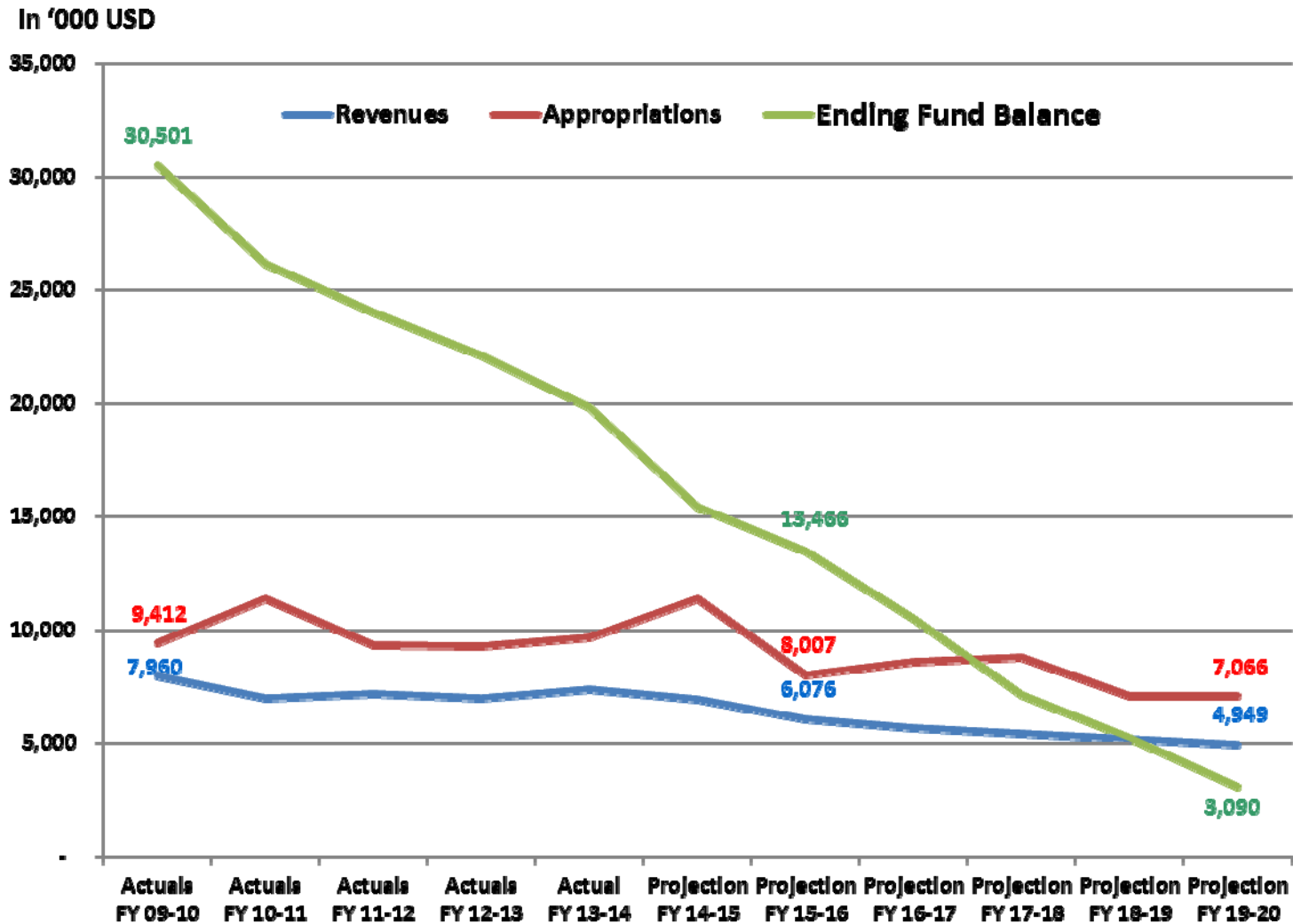
# Investing in Children

- Total investments over 18 years  
**\$137 million!**



Investments that last  
a lifetime!

# FY 2015-20 Challenges



COUNTY OF SAN MATEO



# FY 2016-17 Budget Overview

	In Thousands			
	FY 2015-16 Actual	FY 2016-17 Recommended	Amount Change	Percent Change
Total Sources	21,938	19,777	(2,161)	-9.8%
Total Requirements	21,938	19,777	(2,161)	-9.8%
Net County Cost	0	0	0	0
Total Positions	8	8	0	0



# OUR CHILDREN ARE OUR FUTURE!

