

Department of Public Works

COUNTY_{OF} **SAN MATEO**



**Broadmoor Village Limited Time
Parking Restrictions - Street
Sweeping**

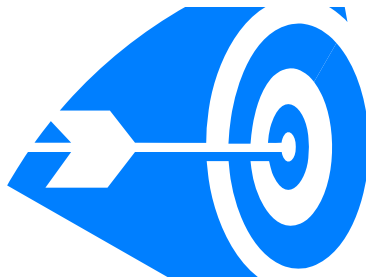


REGULATORY MANDATES

The California Regional Water Quality Control Board's Municipal Regional Permit (MRP) requires:

Trash Reduction: 40% by 2014
70% by 2017
100% by 2022

Implementation Plans: Short Term Plan Feb, 2012
Long Term Plan Feb, 2014



REGULATORY FOCUS – SF Regional Water Quality Control Board

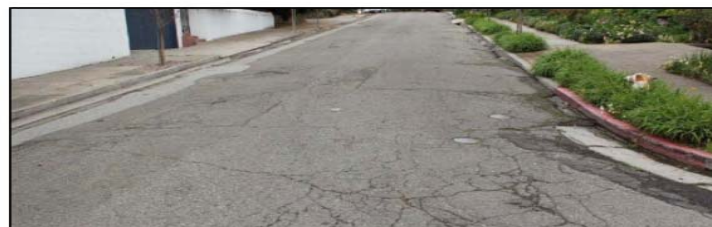
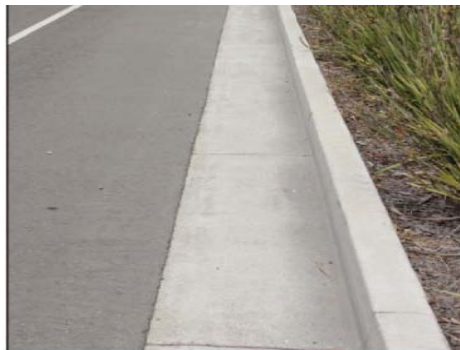
- Trash Reduction in Moderate and High Trash Areas (as mapped and field verified in accordance with guidelines)
- Demonstrated Program Enhancements (from 2012 Baseline)



Visual Guidelines Established 2013

Condition A

Effectively no trash can be observed on a City block or the equivalent. There may be some small pieces in the area but they are not obvious at first glance and one individual could easily pick them up





Condition B – Moderate Trash Levels

Predominantly free of trash except for a few pieces that are easily observed



COUNTY OF SAN MATEO



Condition C High Trash Level

Trash is widely/evenly distributed and/or small accumulations are visible on the street, sidewalks or inlets. It would take a more organized effort to remove the litter





Steps Taken to date:

- Proposed Parking Restrictions During Street Sweeping Hours
- Met with Community to Present Proposal
- Implemented a Voluntary Community Trash Reduction/Clean-up Program (Adopt a Street Program)
- Modified Original Proposal to Minimize Community Impacts



Agreed Plan

- Contact Garbage Service Providers Regarding Spillage
- Advise BPOA of Street Sweeping Schedule
- Scheduled Sweeping During a 2 Hour Window
- Encourage Voluntary Removal of Cars During Street Sweeping. DPW Installed Signs Announcing Street Sweeping Times and Dates
- Install Storm Drain Screens and Filters



Agreed Plan

- Implement Adopt a Street Program with Community Picking up Street Trash
- BPOA Community Outreach to Schools
- DPW Monitored and Documented On-Street Trash Monthly
- Implement Parking Restrictions Once per Month on One Side of the Street Only if Trash Issues are Found to Persist



FINDINGS

On-Street Trash Continues to Persist, Especially
in Street Gutters Which Would be Accessible to
Sweepers if Parking was Prohibited

COUNTY OF SAN MATEO



Sullivan Avenue





Village Lane





Garden Lane



COUNTY OF SAN MATEO



87th Street



COUNTY OF SAN MATEO



Washington Street



COUNTY OF SAN MATEO



88th Street



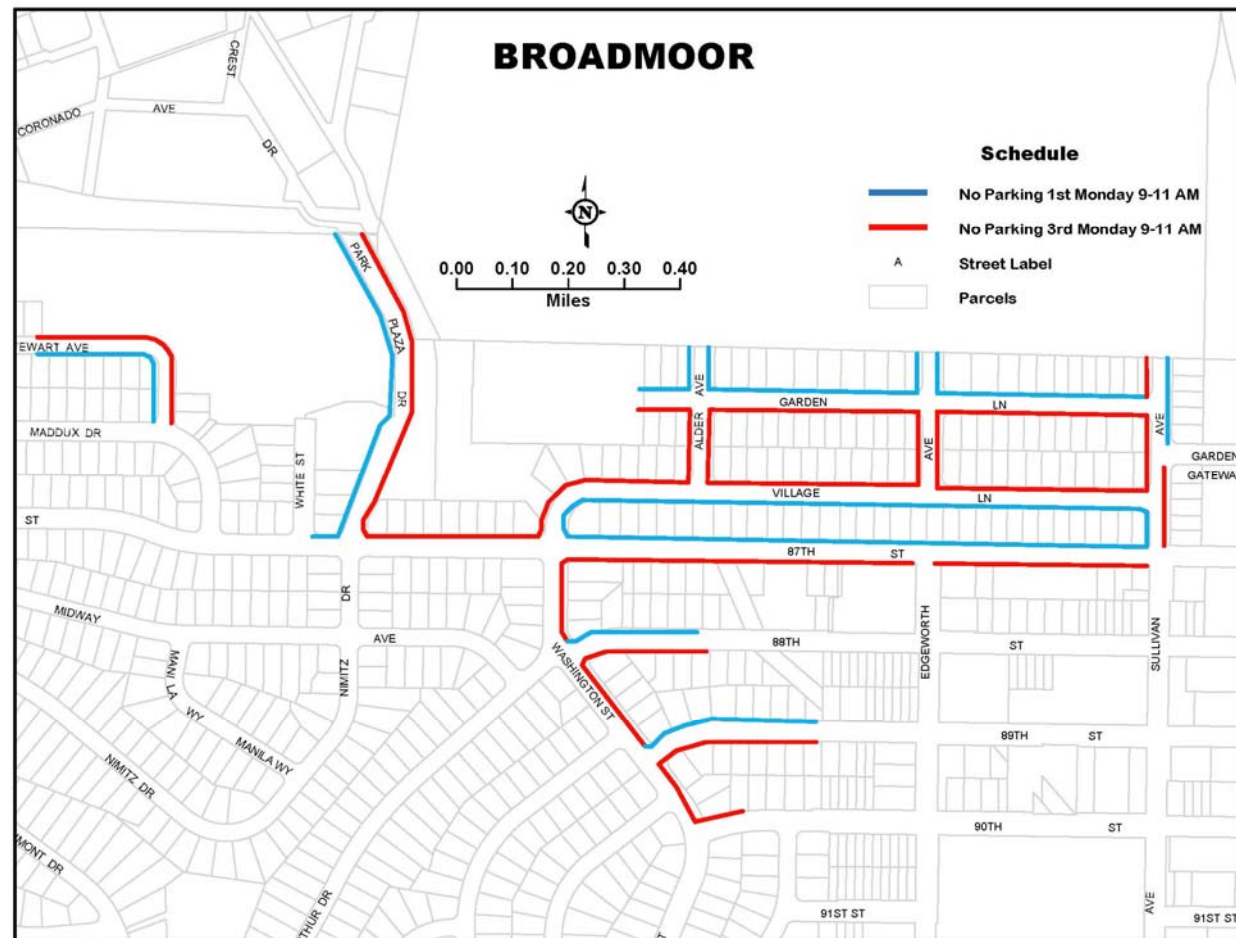
Inaccessibility to Curbs Due to On-Street Parking



COUNTY OF SAN MATEO



Parking Restriction Plan



COUNTY OF SAN MATEO



Thank You!