

**COUNTY**<sub>OF</sub> **SAN MATEO**





# Parks Department Performance Report

**Marlene Finley**

Director

July 15, 2014

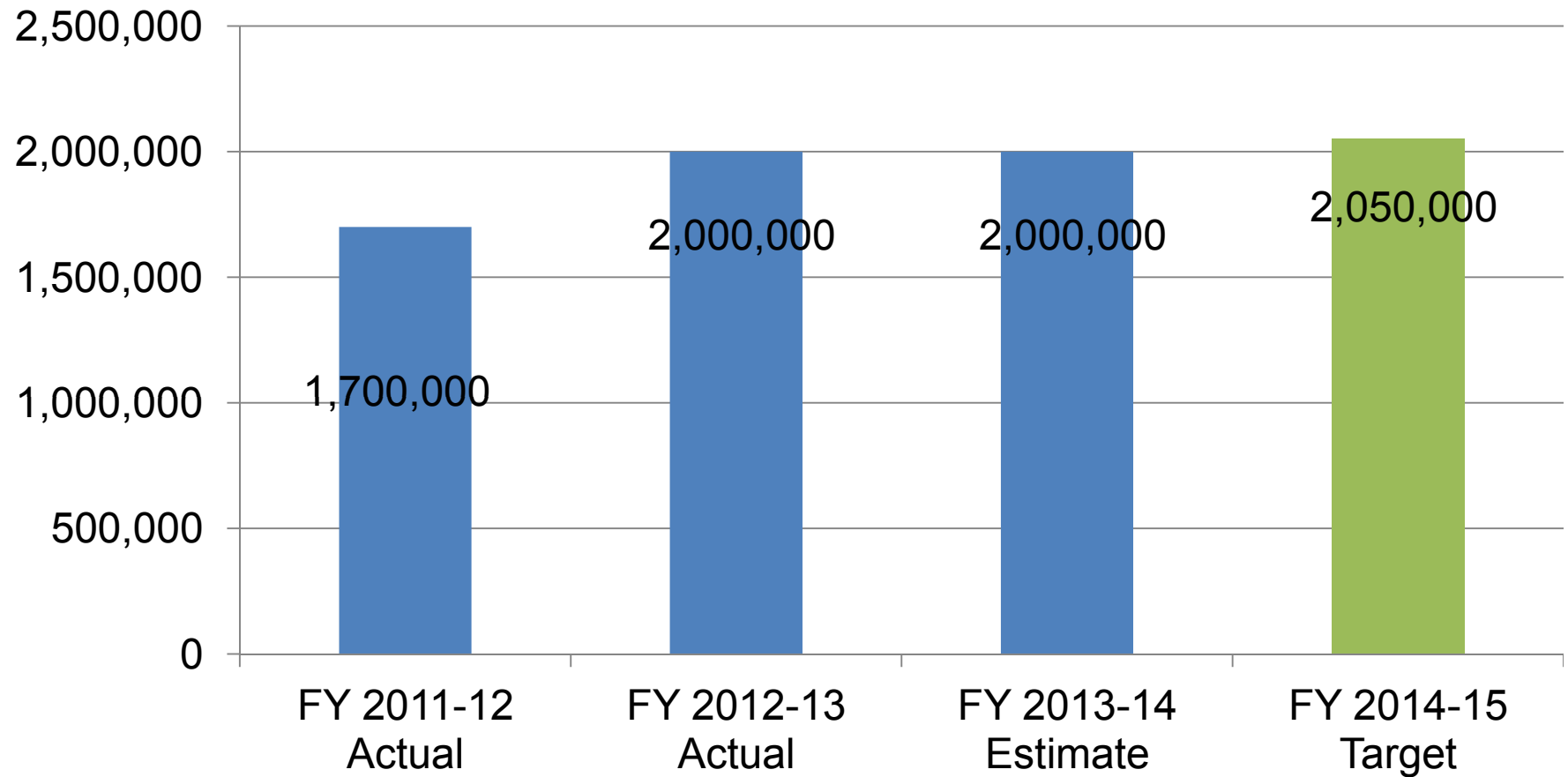
COUNTY OF SAN MATEO



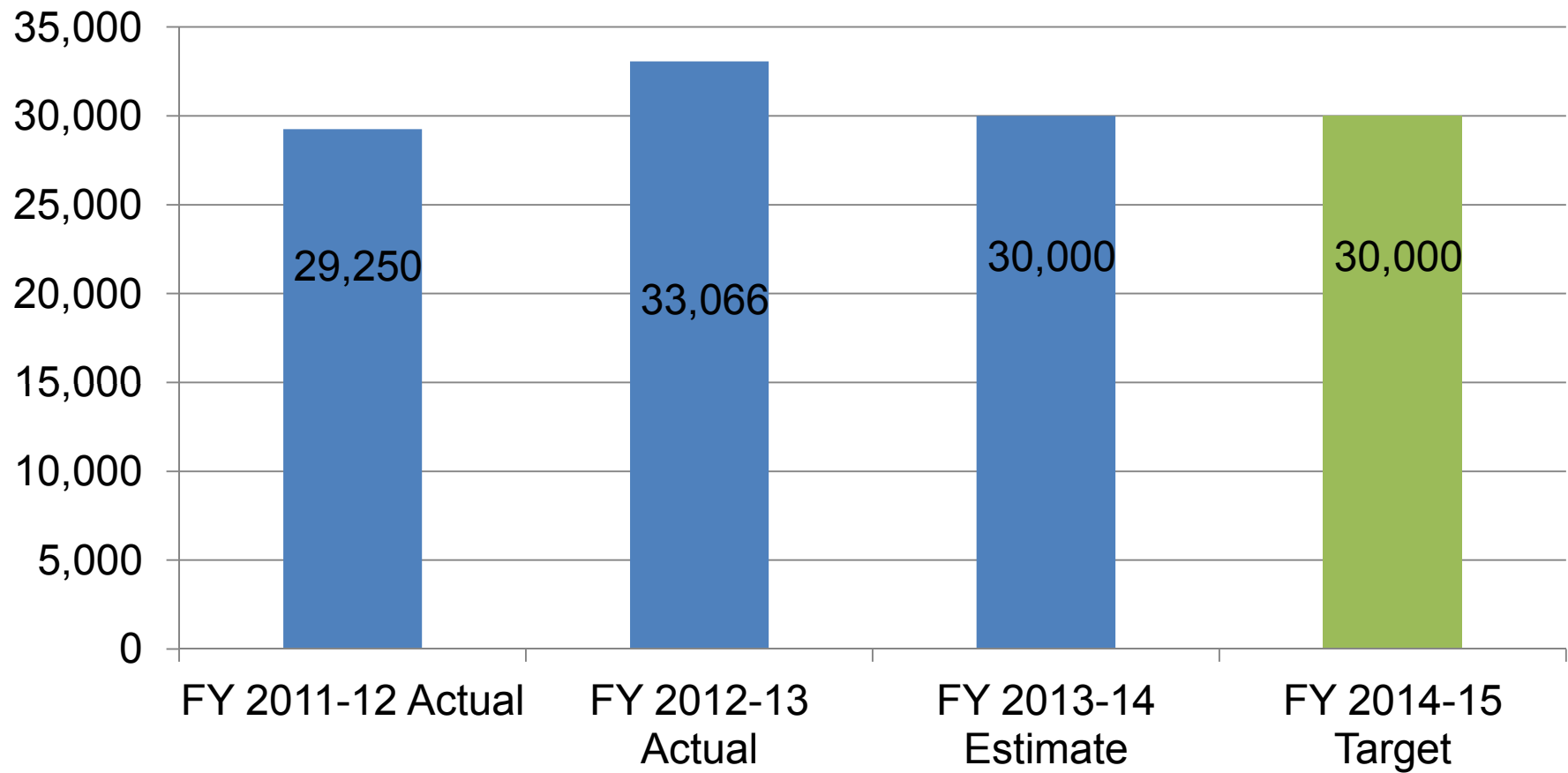
# Mission

Through stewardship, San Mateo County Parks preserves our County's natural and cultural treasures in order to provide safe and accessible parks, recreation, and learning opportunities that enhance the community's quality of life.

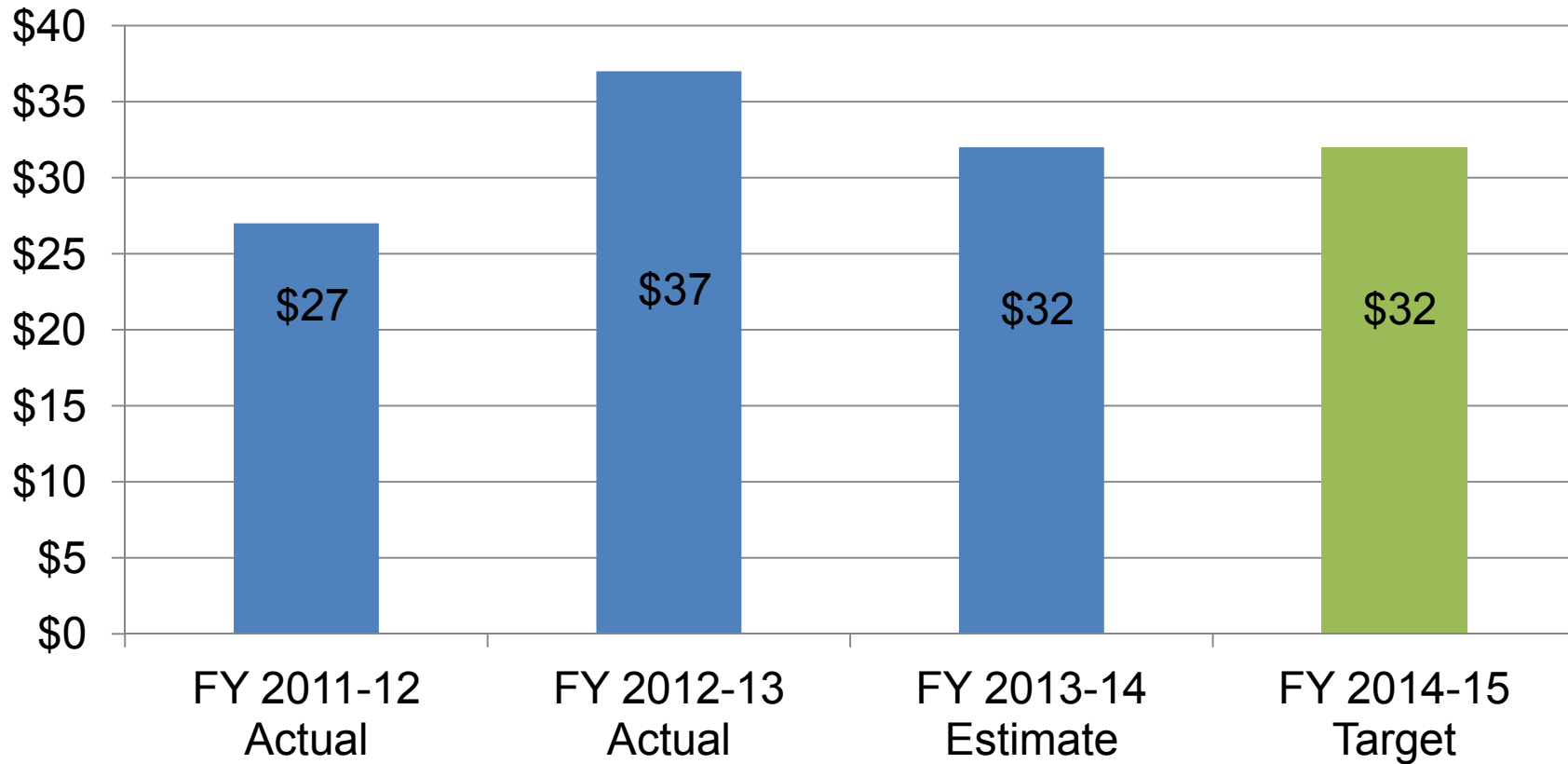
# Headline Measure: Number of Annual Park Visits



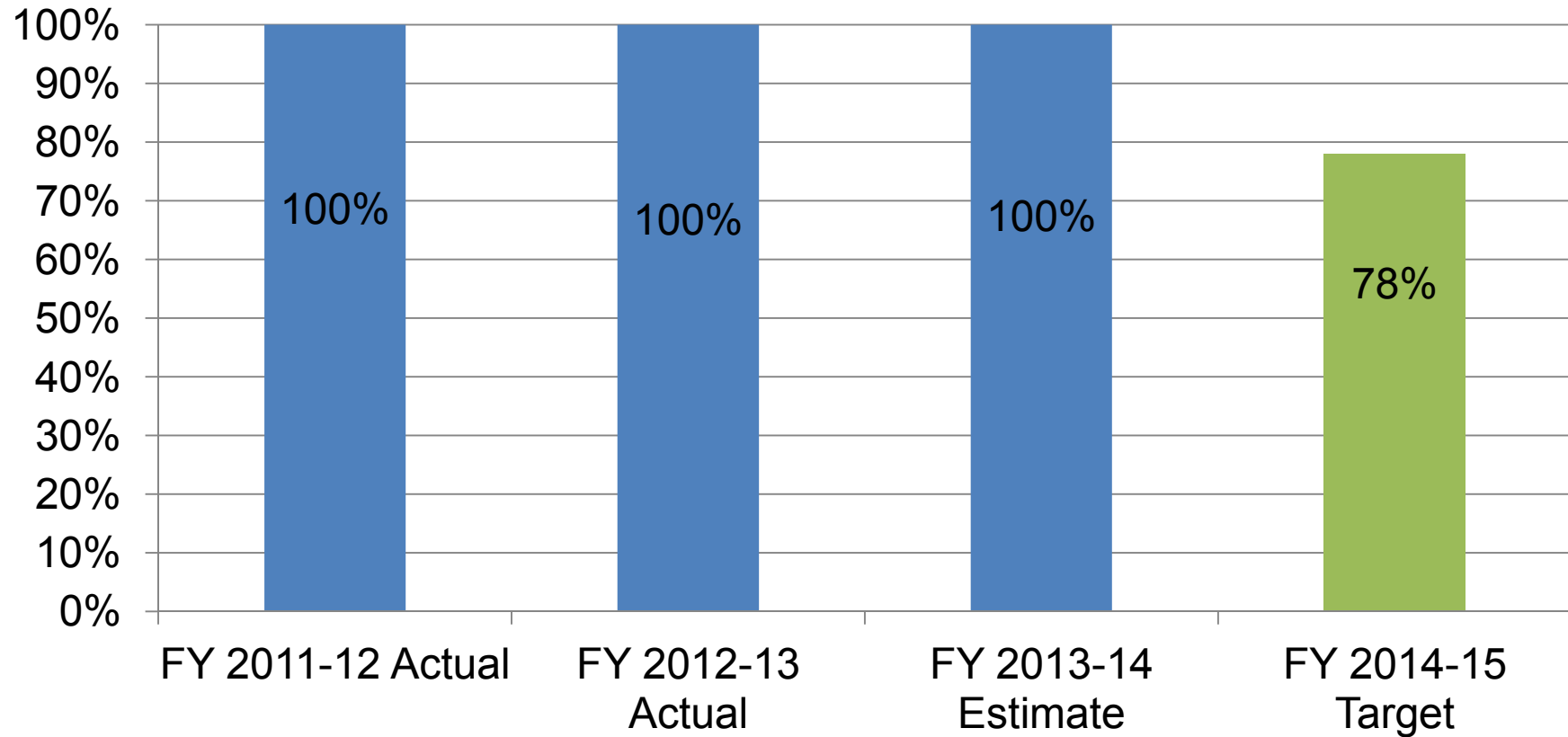
# Headline Measure: Volunteer Hours



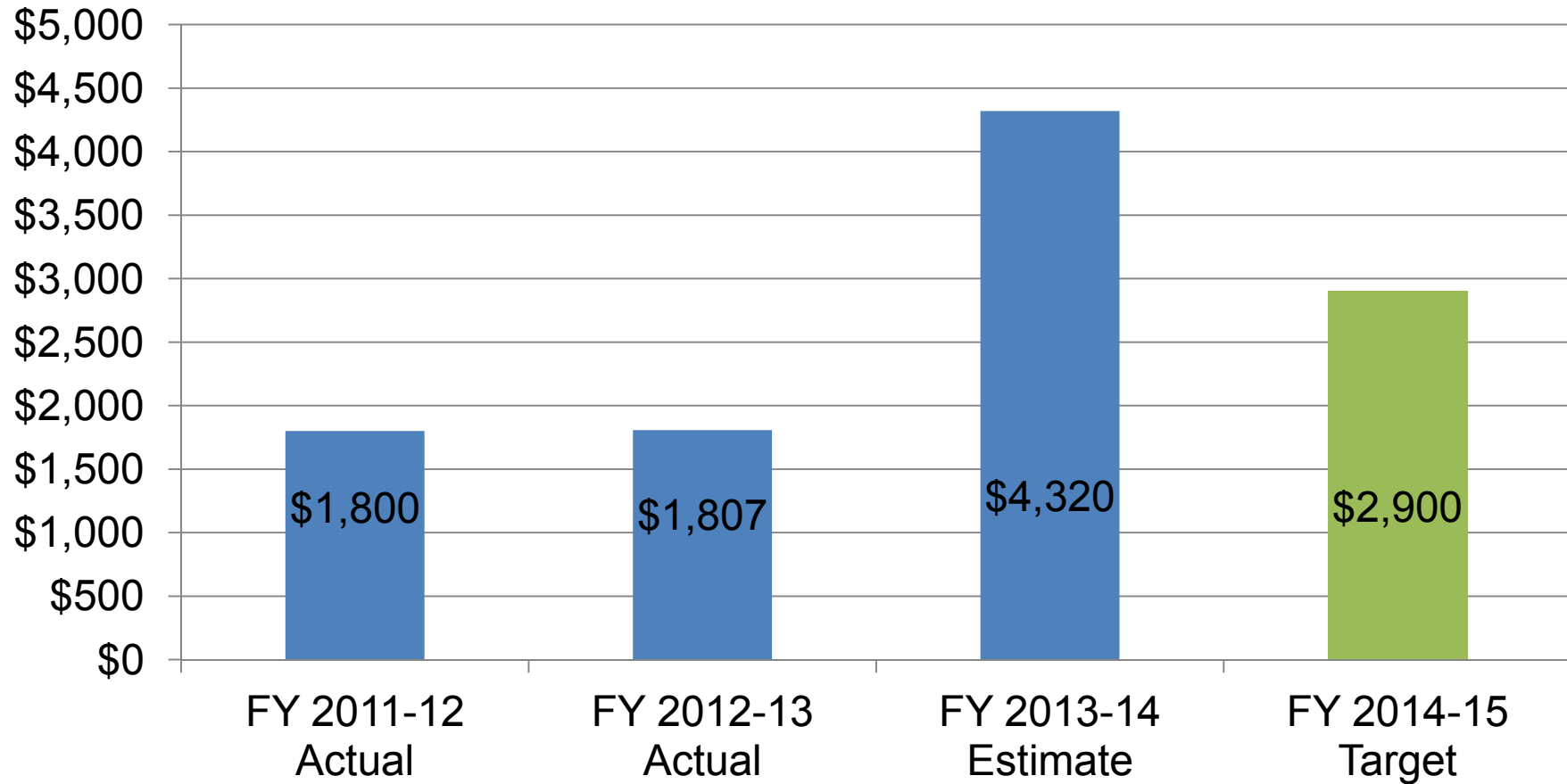
# Program Result: Grant Dollars Awarded per Dollar Invested



# Program Result: Capital Projects Completed on Time and on Budget

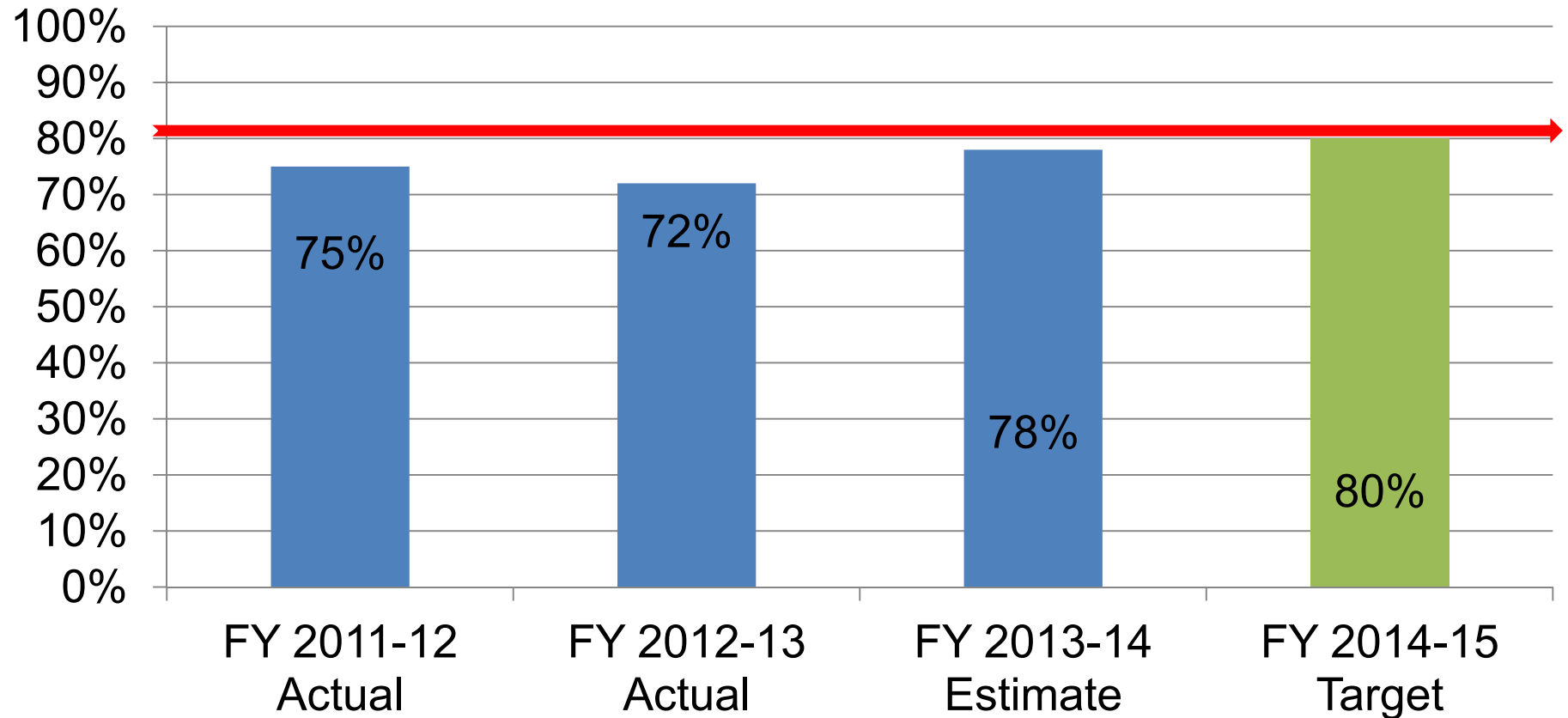


# Program Result: Cost per Berth





# Program Result: Percent of Berths Filled



# Budget Summary

## FY 2013-14

- Total Sources:  
\$14,266,075
- Total Requirements:  
\$20,687,434
- Net County Cost:  
\$6,421,359
- Funded FTEs: 59.68

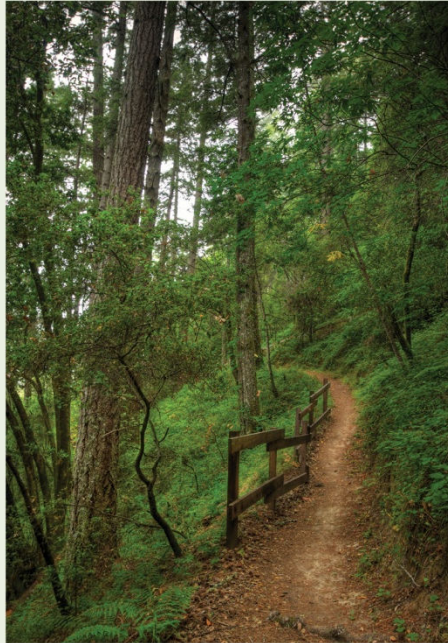
## FY 2014-15

- Total Sources:  
\$9,349,524
- Total Requirements:  
\$16,907,903
- Net County Cost:  
\$7,558,379
- Funded FTEs: 60.68

# Fiscal Year 2013-15 HIGHLIGHTS

## San Mateo County Parks

Wild places & friendly spaces • [SMCoParks.org](http://SMCoParks.org)



Hike...  
Ride...  
Explore...  
Picnic...  
Camp...  
Play...  
Learn...  
and more!



COUNTY OF SAN MATEO





# Fiscal Year 2013-15 HIGHLIGHTS

More parks, more acres, more trails



COUNTY OF SAN MATEO





# Fiscal Year 2013-15 Highlights

## More Trails – Devil's Slide



COUNTY OF SAN MATEO



# Fiscal Year 2013-15 Highlights

More Acres – Daly City Sand Dunes



COUNTY OF SAN MATEO





Fiscal Year 2013-15 HIGHLIGHTS  
21 Capital Projects

## San Mateo County Parks

Wild places & friendly spaces • [SMCoParks.org](http://SMCoParks.org)



**The Coyote Point Marina includes boat slips, a launch ramp, fuel dock, pump-out station, and public fishing berm. The Marina is also home to the Coyote Point Yacht Club.**

COUNTY OF SAN MATEO



# Fiscal Year 2013-15 HIGHLIGHTS

Expand Volunteer Program – Devil's Slide Trail Ambassadors

## San Mateo County Parks

Wild places & friendly spaces • [SMCoParks.org](http://SMCoParks.org)



**Each year thousands of volunteers help construct and maintain trails, restore habitats, educate visitors, and more. To volunteer or learn more, visit [SMCoParks.org](http://SMCoParks.org).**

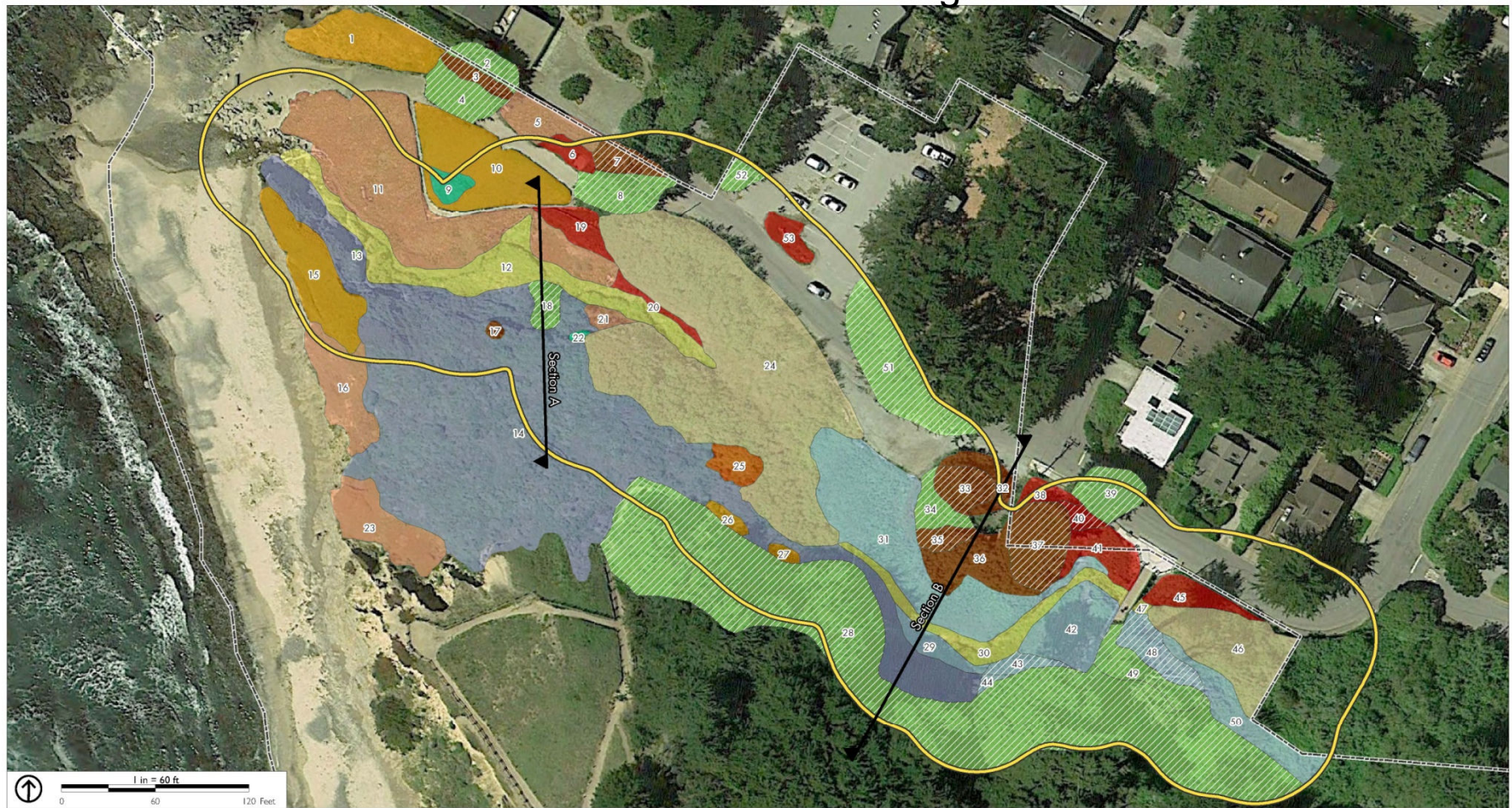
COUNTY OF SAN MATEO





# Fiscal Year 2013-15 HIGHLIGHTS

## Natural Resource Management



SOURCE: SAN MATEO COUNTY, 2010; THE PLANNING CENTER | DC&E, 2013; GOOGLE, 2013.

FIGURE 3 - PLANT SPECIES/COVER DISTRIBUTION

**SAN VICENTE CREEK HABITAT ENHANCEMENT PLAN**  
**PRELIMINARY DRAFT 10/25/2013**  
**FITZGERALD MARINE RESERVE**  
**SAN MATEO COUNTY**

### Invasive Species

- Ice plant stand
- English ivy stand
- Non-native grassland
- Pittosporum/Mirror plant

- Cypress Overstory
- Cypress Grove

### Native Species/Cover Types

- Freshwater Marsh
- Willow Riparian
- California Strawberry Patch
- Creeping Wildrye Grassland
- Riparian Scrub
- Coastal Scrub

### Boundary and Section Lines

- 50 Foot Riparian Corridor Buffer Zone
- Cross-section line locations (see Figures 4 and 5 for Cross-sections)
- Fitzgerald Marine Reserve Boundary
- Area of Mapped Cover Type Shown in Figure 4

COUNTY OF SAN MATEO





## Fiscal Year 2013-15 HIGHLIGHTS

### Habitat Restoration



COUNTY OF SAN MATEO





# Fiscal Year 2013-15 HIGHLIGHTS

Cypress Grove (credit: Stephen Johnson Photography)



COUNTY OF SAN MATEO





# Fiscal Year 2015-17 PRIORITIES

## Build Volunteer Stewardship Corps



COUNTY OF SAN MATEO





## Fiscal Year 2015-17 PRIORITIES

### Expand Environmental Literacy

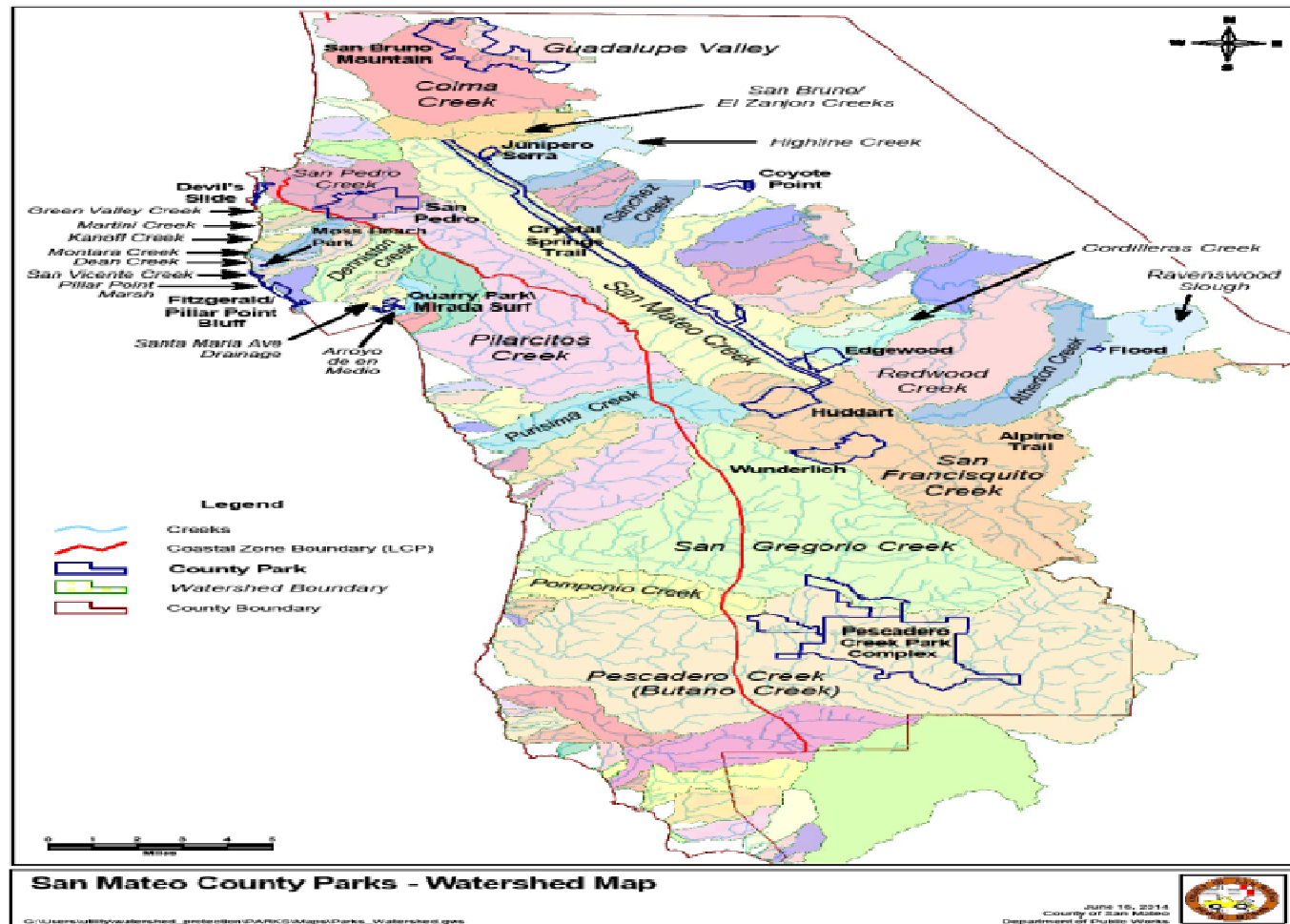


COUNTY OF SAN MATEO



# Fiscal Year 2015-17 PRIORITIES

Establish Baseline Data and GIS



COUNTY OF SAN MATEO





# Fiscal Year 2015-17 PRIORITIES

## Devil's Slide Connector Trails



COUNTY OF SAN MATEO



# Fiscal Year 2015-17 PRIORITIES

## Expand Focus on Health



**HEALTHY**  
**PARKS**  
**HEALTHY**  
**PEOPLE**  
BAY AREA

COUNTY OF SAN MATEO





# Fiscal Year 2015-17 PRIORITIES

## Expand Focus on Youth



COUNTY OF SAN MATEO



# Path to the Future



COUNTY OF SAN MATEO

