



COUNTY OF SAN MATEO
Inter-Departmental Correspondence
Probation



Date: May 23, 2014
Board Meeting Date: June 3, 2014
Special Notice / Hearing: None
Vote Required: Majority

To: Honorable Board of Supervisors

From: John Keene, Chief Probation Officer
Jean S. Fraser, Chief, Health System
Iliana Rodriguez, Director, Human Services Agency
Greg Munks, Sheriff

Subject: Comprehensive reentry system for high and moderate offenders

RECOMMENDATION:

Adopt a Resolution authorizing approval and funding of \$1,803,417 for a comprehensive reentry system for San Mateo County residents released from county correctional facilities.

BACKGROUND:

In January 2010, San Mateo County was one of 14 jurisdictions to receive a Second Chance Act grant from the Bureau of Justice Assistance to launch an adult reentry program. Prior to the program's implementation, post-custody services were not seamlessly linked to the Sheriff's Office in-custody programs, decreasing the likelihood that inmates would successfully connect to community-based services upon discharge. Prior to implementing the grant funded program, approximately 70% of persons released from jail reoffended within two years of their release.

From January 2010 through March 2014, the Achieve 180 program (A180) bridged the fragmentation between in-custody and post-custody programs by providing risk assessments, tailored case management plans, job skills training, mentoring, substance use treatment, and temporary housing. A180's main goals were to reduce recidivism and support the successful transition of formerly incarcerated individuals back to the community. In four years, A180 served 430 individuals who were at moderate or high risk to recidivate. Offenders entered the program two months prior to release and continued for up to one year afterwards.

Preliminary outcome data indicate that A180 was successful in reducing recidivism as:

- 79% of all program participants did not recidivate while enrolled in A180; and
- 89% of active program participants did not recidivate a year after release.

Although longer-term re-incarceration and conviction rates were higher than the 1-year post-incarceration rates, these initial results are highly encouraging when compared to a statewide recidivism rate of 70% for this population.

Federal funding for A180 ended in March 2014, and as a result, the program ceased new enrollments; however, A180 has continued to serve existing participants by using program reserves.

Service Connect (SC), a collaborative effort between the Probation Department, the Human Services Agency, the Sheriff's Office, and the Health System, was launched in 2012 in response to Assembly Bill 109 (Chapter 15, Statutes of 2011) that transferred responsibility and funding for various adult offender populations from the state to counties. SC provides the realigned populations with emergency resources, performs needs assessments, assists with benefits applications, and refers offenders to programs supporting mental/physical health, substance recovery, and employment. Since its inception SC has served 605 individuals of which 63% have successfully completed their probationary period.

DISCUSSION:

Although the Federal grant funding for A180 has expired, your Board is provided with an opportunity to establish a comprehensive County reentry system that will serve all inmates at high and moderate risk to recidivate, regardless of their AB 109 status.

The proposed program will incorporate A180 and Service Connect best practices and provide a seamless transition from in-custody case management services to comprehensive out-of-custody services upon release to approximately 200 sentenced offenders per year who would otherwise not receive any service supports. The overall program goals will continue to be reducing recidivism and achieving stability and pro-social behaviors for all program participants.

The main elements of the new reentry system (Attachment #1) are:

Getting Ready

Phase one begins in custody. The Sheriff's Office and Correctional Health will provide:

- Safety, security, program service needs and health assessments to determine appropriate housing, programs, and services.
- Reentry risk/needs assessments, specifically the evidence-based Correctional Assessment and Intervention System (CAIS) to inform reentry planning.
- Educational, vocational, veteran, gender based, life skills, parenting, and mentoring programs/services.
- Case management to coordinate in-custody program/services, tailor release plans and coordinate with relevant partners to prepare for successful reentry.
- A continuum of care foundation as part of in-custody programs and a warm hand-off with Service Connect and/or Probation.

Going Home/Staying Home

The second and third phases begin out of custody. Probation, in partnership with the Human Services Agency and the Health System through Service Connect, will provide:

- Intensive supervision and support for those on Court-ordered probation, including ensuring compliance with court orders, collection of victim restitution, case plans addressing criminogenic needs, promoting client compliance, and coordinating support services with Service Connect.
- Emergency resources such as food, temporary housing, clothing, transportation, and phone cards.
- Benefits enrollment, including screening and application for health insurance, General Assistance, CalFresh, and CalWORKs.
- Continued case management, including reentry plan implementation and sustainable reentry maintenance.
- Employment support, including job readiness assessment, employment plan development, subsidized employment, vocational case management, and referrals to jobs and training programs.
- Medical, mental health and substance recovery treatment.
- Housing supports, including transitional residency, shelter referrals and connection to rent assistance toward sustainable housing.
- Family reunification, support groups, peer mentoring, and family therapy referrals.
- Pro-social thought, behavior and peer influence sessions, particularly cognitive-behavioral and moral reconnection therapies and peer mentoring.
- Education referrals, including GED preparation, literacy courses, computer training, and links to community colleges and university program.

Many of these services are evidence-based or best practices and important to changing lives and reducing recidivism. Multi-disciplinary team meetings will ensure that program participants are connected to services immediately upon release and County staff will track the population via Social Solutions to determine client outcomes.

PERFORMANCE MEASURE(S):

Measure	FY 2014-15 Projected
Number of inmates who are assessed with the Correctional Assessment and Intervention System (CAIS) tool	1,200
Number of inmates who work with an in-custody case manager	600
Percent of inmates receiving comprehensive needs assessment by a Correctional Health reentry clinician	100%
Percent of those participating in the 550Jobs! program who secure employment	65%

Percent of supervisees sent to AOD programs who successfully complete them	68%
Percent of Probation supervisees who successfully complete supervision	65%
Percent of participants re-incarcerated within 1 year of release from custody	30%

FISCAL IMPACT:

Upon the Board's approval, the FY 14-15 Reentry budget will be \$1,803,417 in new Net County Cost (Attachment #2). Forty-four percent of the overall budget will be spent on direct services to clients and 56% in salaries and benefits for 9.2 County FTEs, of which 5 are new positions.

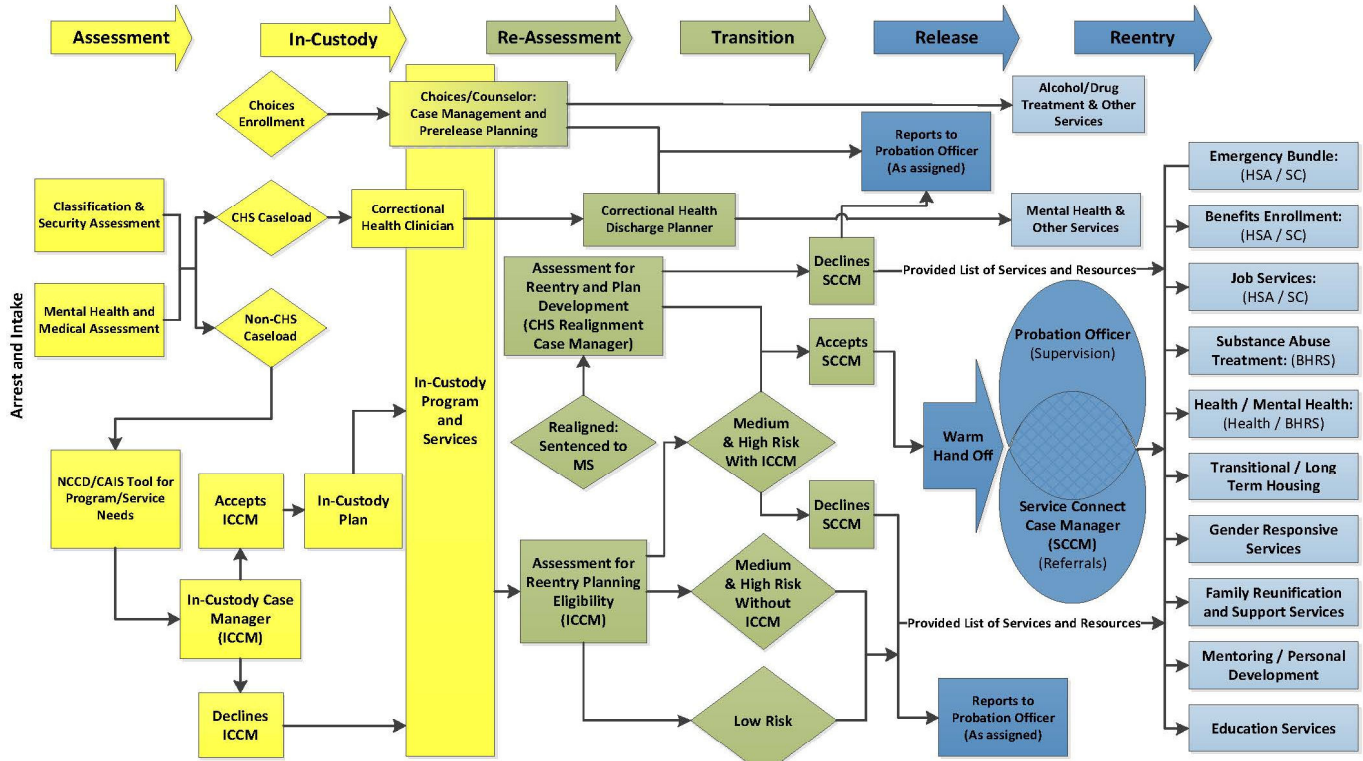
Department	Classification	FTE	Status
Probation	Probation Officer	2	1 New & 1 Existing
Probation	Management Analyst	.5	Existing
Sheriff's Office	Legal Office Specialist	1	New
Sheriff's Office	Data Technician	.5	Extra Help
Health/Correctional Health	Psychiatric Social Worker	1	New
Health/BHRS	Psychiatric Social Worker	1	Existing
Health/BHRS	Assessor/Case Manager	1	Existing
Health/BHRS	Psychiatrist	.2	Existing
Human Services Agency	Vocational Rehab Counselor	1	New
Human Services Agency	Community Worker	1	New
	Total	9.2	

The Achieve 180 Program cost a total of \$1,450,000 in FY 12-13 (the last year of full federal funding), of which 75% was federal funding and 25% Net County Cost. Public Safety Realignment funding will also be leveraged to fully fund the cost of the proposed new program. The cost per client will also be lower:

Achieve 180 FY 2012-2013		Unified Reentry FY 14-15 (Non-AB 109)
Number Served	150	200
Cost per Client	9,667	9,017

San Mateo County Probation Reentry Plan

Attachment #1



Color Key

- In-Custody
- Transition Planning
- Reentry
- Reentry Services and Programs

Note:

For those who accept an In-Custody Case Manager, the ICCM will convene Multi-Disciplinary Teams (MDTs) throughout individuals' stay.

MDTs may include:

Program Services Manager, In-Custody Case Manager, Classification Detective, Service Connect Case Manager, Probation Officer, Correctional Health Clinician, Correctional Health Discharge Planner, & others as needed.