



COUNTY OF SAN MATEO
Inter-Departmental Correspondence
Public Works



Date: July 1, 2013
Board Meeting Date: August 6, 2013
Special Notice / Hearing: None
Vote Required: Majority

To: Honorable Board of Supervisors

From: James C. Porter, Director of Public Works

Subject: Establishing No Parking during Specified Hours Zones at Various Locations in the County

RECOMMENDATION:

Adopt a Resolution authorizing the establishment of No Parking during Specified Hours Zones to facilitate street sweeping in the Broadmoor and San Mateo Highlands areas.

BACKGROUND:

Your Board has adopted similar resolutions designating No Parking during Specified Hours Zones.

Section 22507 et.al. of the California Vehicle Code provides that local authorities may prohibit or restrict the stopping, parking or standing of vehicles by resolution or ordinance. The resolution does not take effect until signs indicating the days and times of the restrictions have been posted on the affected street.

DISCUSSION:

The California Regional Water Quality Control Board's Municipal Regional Permit (MRP) requires the County to reduce trash loads from municipal storm water systems by 40% in 2014, 70% in 2017 and 100% in 2022. In order to meet these requirements, the County has developed a short term implementation plan, is in the process of developing a long term implementation plan and has implemented various trash capture and reduction programs, including:

- Installation of trash capture devices in approximately 100 storm drain inlets
- Adoption of a plastic bag ban
- Redesigned street sweeping schedules to align with trash pickup dates

However, because no single program can effectively eliminate trash, it is essential that the County's strategies be comprehensive and include enhanced street sweeping, since on-street debris represents a large amount of the trash that must be eliminated. In June 2013, the Department of Public Works (DPW) surveyed residents in the Broadmoor, Sequoia Tract, San Mateo Highlands and Ladera neighborhoods regarding a parking restricted street sweeping program. Such parking restrictions would allow DPW to more efficiently remove trash and debris from streets with vertical curbs and gutter by enabling equipment to better access curbs and storm drain structures. Conflicts currently exist with vehicles parked on the road on street sweeping days.

The parking restrictions would:

1. Require residents to move their cars outside of on-street posted no parking zones during posted "no parking" hours. No parking restrictions would be for periods up to three hours and would apply twice per month.
2. Require that no parking signs be posted at a distance of no further than 300 feet between signs so that law enforcement officers could cite offending parties.

Results of the surveys showed substantial opposition to the proposed parking restrictions in the Broadmoor, San Mateo Highlands, and Ladera areas.

We have since reviewed maps currently being developed by EOA, a consultant working on behalf of Bay Area municipalities, towards the development of consistent strategies which will allow municipalities to become compliant with the MRP. These maps have identified strictly residential areas within the Broadmoor, San Mateo Highlands, Sequoia Tract and Ladera areas as "low trash generation areas", and identified other areas that are not strictly residential, including schools, community centers and commercial zones, as moderate or high trash generation areas.

Based on this information and the concerns voiced over parking restrictions, we are currently proposing that time limited parking restrictions be established in Broadmoor and San Mateo Highlands in areas identified through trash generation maps as moderate or high trash generation regions, generally in alignment with areas that have uses identified as other than residential. We no longer propose implementing such restrictions in strictly residential, low trash generation areas.

Posted no parking during street sweeping hours is one of a very limited number of techniques identified as an effective means of reducing trash in moderate and high trash generation areas, and we believe it may be necessary for us to implement, within moderate and high trash generation areas, all of the techniques which have been validated as effective at reducing trash levels to be completely compliant with the MRP mandated regulations.

The objections and support received to date are summarized in Attachment "A".

The location of no parking during specified zones on County maintained streets are currently shown on maps in DPW, and will be made available in list form on our web site. The master lists will be updated to reflect the recommended changes if the Board approves the proposed resolution.

County Counsel has reviewed and approved the Resolutions as to form.

Approval of this Resolution contributes to the Shared Vision 2025 outcome of an Environmentally Conscious Community by removing trash from our neighborhoods.

FISCAL IMPACT:

The cost for staff time to evaluate and process requests for traffic regulations is part of the administrative cost associated with evaluating traffic-related requests involving the County maintained road system, and is financed with Road Funds. The cost of installing signs and painting parking zone markings varies, but averages to approximately \$550 per parking zone. The total cost of sign installations in conjunction with the current “no parking” proposal is estimated to be \$33,000. The cost of these signs and markings will be financed with Road Funds. There will be no impact to the General Fund.

Attachment: “A” – Proposed Parking Restrictions and Public Input Summary

Attachment “A” – Proposed Parking Restrictions and Public Input Summary

Item #1: Authorizing the establishment of no parking during specified hours zones in Ladera (Current proposal does not include parking restrictions in Ladera)

Address	Area	Description	Objections	Support
Ladera	Ladera	Page 2	56	1

Item #2: Authorizing the establishment of no parking during specified hours zones in San Mateo Highlands

Address	Area	Description	Objections	Support
San Mateo Highlands	San Mateo	Page 3	66	1

Item #3: Authorizing the establishment of no parking during specified hours zones in Sequoia Tract (Current proposal does not include parking restrictions in Sequoia Tract)

Address	Area	Description	Objections	Support
Sequoia Tract	Redwood City	Page 5	1	0

Item #4: Authorizing the establishment of no parking during specified hours zones in Broadmoor

Address	Area	Description	Objections	Supports
Broadmoor	Broadmoor	Page 6	11	0

Descriptions of Proposed Traffic Control Devices by Location:

Item 1 Location: Ladera

Establish no parking during specified hours zones to facilitate street sweeping.

Discussion: Staff originally proposed implementing no parking during specified hours zones throughout the Ladera community in an effort to provide enhanced street sweeping that will enable the County to comply with the California Regional Water Quality Control Board's (CRWQCB) MRP.

However, the community voiced considerable objection when presented with the proposal and the CRWQCB has indicated a more focused emphasis on the moderate and high trash generation areas will be an acceptable means of permit compliance.

In addition, the proposal was based on the CRWQCB identifying posted no parking zones as one of the limited techniques which would allow an agency to receive credits towards compliance with their MRP.

CRWQCB has recently indicated that a greater focus will be placed on agency's validating efforts and the results of those efforts in areas identified as moderate or high trash generation areas.

The modified and current proposal no longer includes additional parking restrictions in Ladera.

There were 56 objections and 1 comment in support of this item. Many of the residents objected to having new signs installed in their community. Comments received by DPW to its original parking restriction proposal are summarized below

LADERA	No. of Comments
Not necessary- street clean	7
Not an issue with the current schedule	3
Do not want signs all over neighborhood	42
Don't waste County funds	4
OPPOSE	56
SUPPORT	1

Descriptions of Proposed Traffic Control Devices by Location:

Item 2 Location: San Mateo Highlands

Establish no parking during specified hours zones to facilitate street sweeping.

Discussion: Staff originally proposed implementing no parking during specified hours zones throughout the San Mateo Highlands in an effort to provide enhanced street sweeping that will enable the County to comply with CRWQCB's MRP.

However, the community voiced considerable objection when presented with the proposal and the CRWQCB has indicated a more focused emphasis on the moderate and high trash generation areas.

DPW is therefore proposing parking restrictions during posted street sweeping hours in areas identified as moderate or high trash generation areas only. The current recommendation is based on the following:

- Having no parking during the sweeping hours will insure sweeping efficiency and maximum trash reduction in the neighborhood.
- No parking restrictions during posted street sweeping hours in moderate and high trash generation areas is effectively considered to be a mandate of the MRP, which requires a 70% reduction of trash by 2017 and a 100% reduction of trash by 2022.

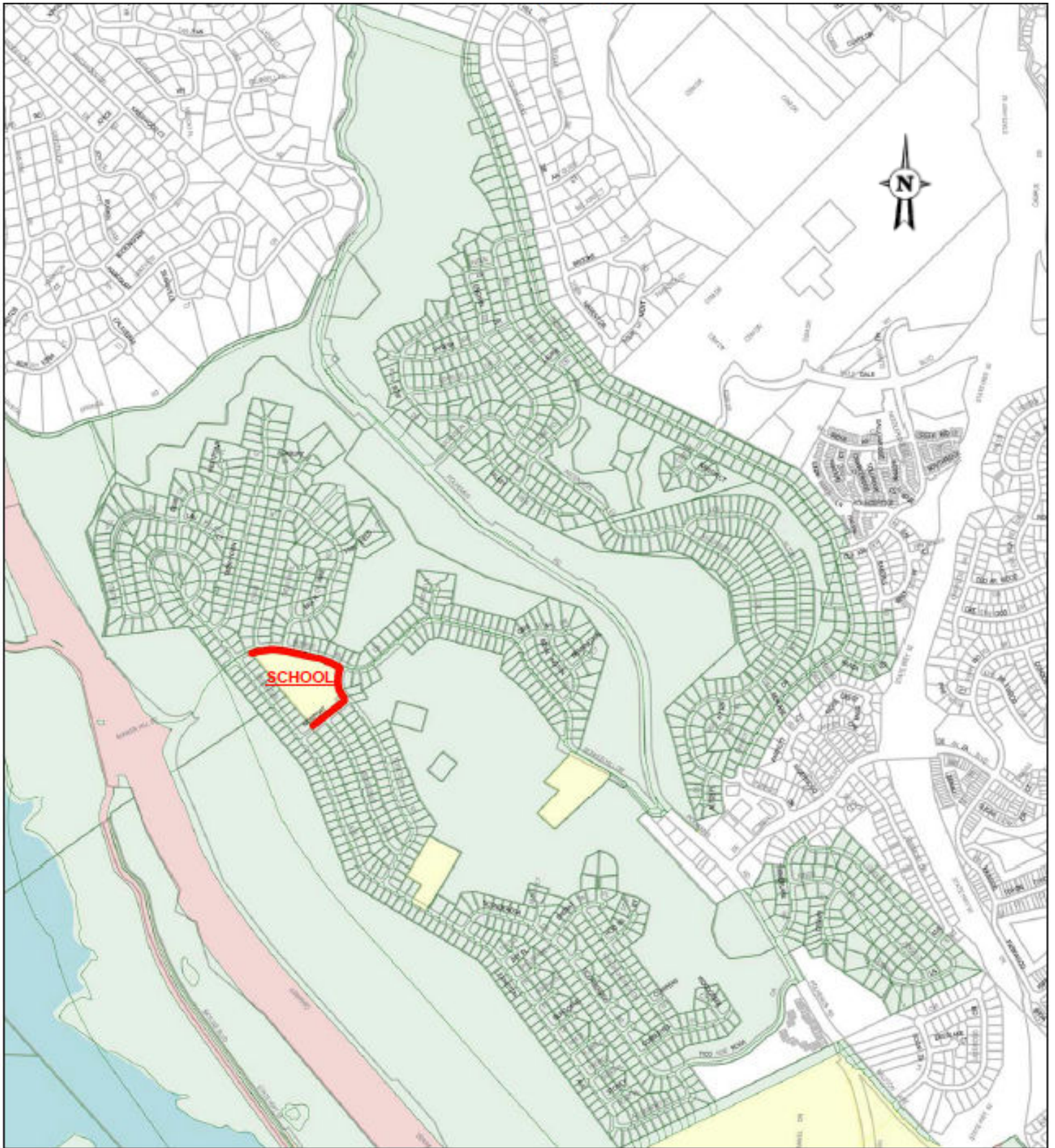
There were 66 objections and 1 comment in support of this item. Many of the residents objected to having new signs installed in their community.

The modified proposal calls for parking restrictions immediately adjacent to Highlands Elementary School.

Comments received by DPW to its original parking restriction proposal are summarized below.

SAN MATEO HIGHLANDS	No. of Comments
Not necessary- street clean	18
Do not want signs all over neighborhood	40
Do not want to get tickets	3
Parking restrictions	2
Not needed	3
OPPOSE	66
SUPPORT	1

Map of proposed No Parking during Specified Hours is shown on the next page.



Proposed Parking Restriction- 2nd and 4th Wednesday 9:00 am -11:30 am

Low Trash Generation Area

Moderate Trash Generation Area

High Trash Generation Area

Descriptions of Proposed Traffic Control Devices by Location:

Item 3 Location: Sequoia Tract

Establish no parking during specified hours zones to facilitate street sweeping.

Discussion: Staff originally proposed implementing no parking during specified hours zones throughout the Sequoia Tract community in an effort to provide enhanced street sweeping that will enable the County to comply with the CRWQCB 's MRP.

However, the proposal was based on the CRWQCB identifying posted no parking zones as one of the limited techniques which would allow an agency to receive credits towards compliance with their MRP.

The CRWQCB has recently indicated that a greater focus will be placed on agency's validating efforts and the results of those efforts in areas identified as moderate or high trash generation areas.

Staff is proposing no further parking restrictions in Sequoia Tract.

Comments received by DPW to its original parking restriction proposal are summarized below:

SEQUOIA TRACT	No. of Comments
Parking restrictions	1
OPPOSE	1
SUPPORT	0

Descriptions of Proposed Traffic Control Devices by Location:

Item 4 Location: Broadmoor

Establish no parking during specified hours zones to facilitate street sweeping.

Discussion: Staff originally proposed implementing no parking during specified hours zones throughout the Broadmoor community in an effort to provide enhanced street sweeping that will enable the County to comply with the CRWQCB 's MRP.

However, several residents within the community have expressed concerns when presented with the proposal and the CRWQCB has indicated a more focused emphasis on the moderate and high trash generation areas.

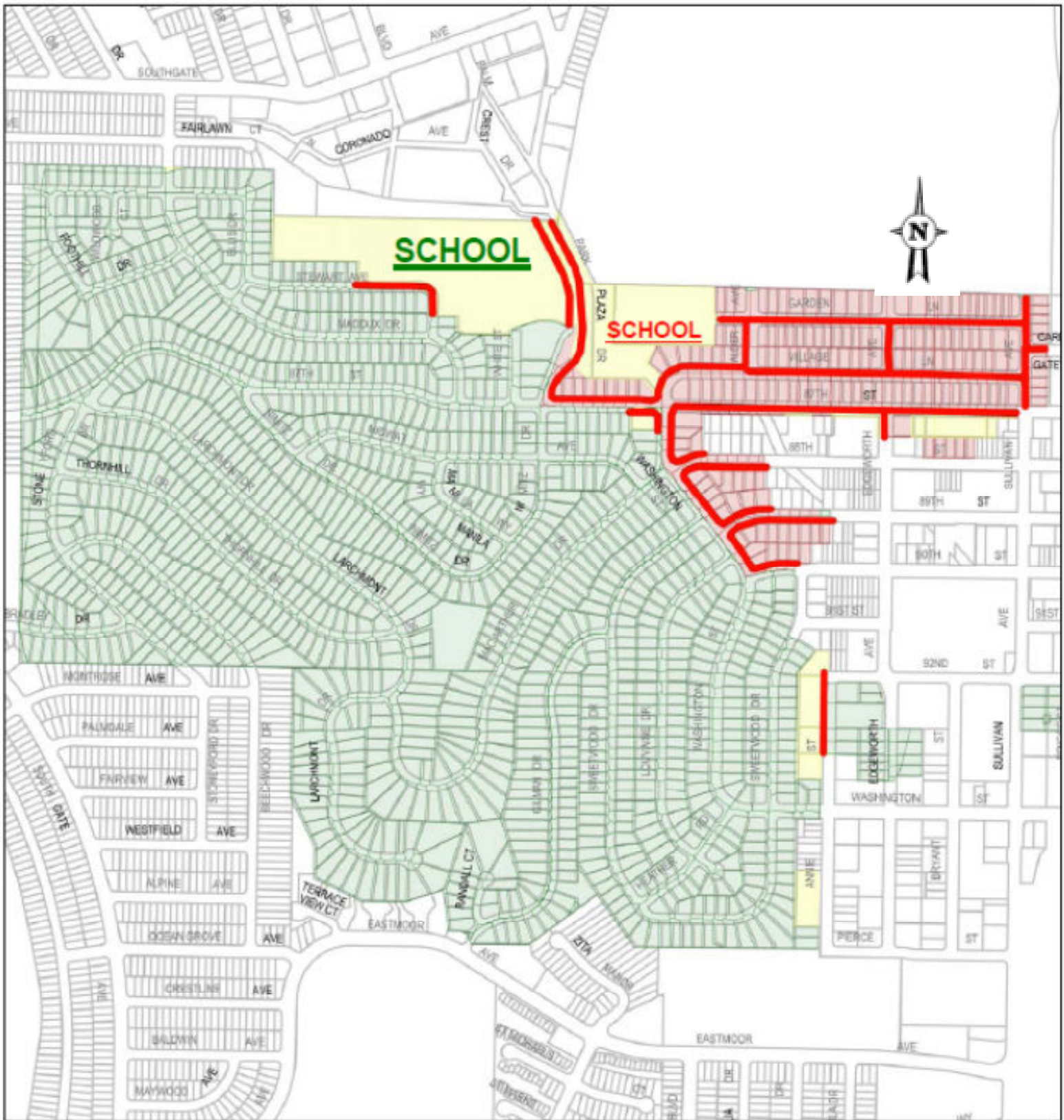
DPW is therefore proposing parking restrictions during posted street sweeping hours in areas identified as moderate or high trash generation areas only. Within the Broadmoor area, this generally consists of commercial districts and the areas immediately adjacent to the community's schools. The current recommendation is based on the following

- Having no parking during the sweeping hours will insure sweeping efficiency and maximum trash reduction in the neighborhood.
- No parking restrictions during posted street sweeping hours in moderate and high trash generation areas is effectively considered to be a mandate of the MRP, which requires a 70% reduction of trash by 2017 and a 100% reduction of trash by 2022.

There were 11 objections and 1 comment in support of the originally proposed parking restrictions with no specific theme to the objections. **The modified proposal eliminates such restrictions in a majority of the community's single family residential areas.** Comments received by DPW to its original parking restriction proposal are summarized below

BROADMOOR	No. of Comments
Not necessary- street clean	4
Inconvenience – having to move car	2
Do not want signs all over neighborhood	3
"If it's not broken, don't fix it"	1
Parking restrictions	1
OPPOSE	11
SUPPORT	0

Map of proposed No Parking during Specified Hours is shown on following page.



Proposed Parking Restriction- 2nd and 4th Wednesday 9:00 am -11:30 am

Low Trash Generation Area
 Moderate Trash Generation Area
 High Trash Generation Area