

RESOLUTION NO. _____

BOARD OF SUPERVISORS, COUNTY OF SAN MATEO, STATE OF CALIFORNIA

* * * * *

RESOLUTION: A) WAIVING THE COUNTY'S RIGHT TO PROTEST CALTRANS' NOTICE OF INTENT TO RELINQUISH THE BYPASSED SEGMENT OF STATE ROUTE 1 IN CONNECTION WITH THE COMPLETION OF DEVIL'S SLIDE TUNNEL; AND B) AUTHORIZING THE COUNTY MANAGER OR HIS DESIGNEE TO EXECUTE DOCUMENTS REQUIRED TO ACCEPT FEE TITLE TO THE BYPASSED SEGMENT OF STATE ROUTE 1; FEE TITLE TO FIVE PARCELS LOCATED IMMEDIATELY TO THE WEST OF THE BYPASSED SEGMENT; AND AN EASEMENT INTEREST LOCATED TO THE EAST OF THE BYPASSED SEGMENT

RESOLVED, by the Board of Supervisors of the County of San Mateo, State of California, that

WHEREAS, the terms and conditions set forth in the San Mateo County Coastal Development Permit for Devil's Slide Tunnel (PLN-2003-00428 dated July 6, 2004) and San Mateo County Local Coastal Plan contemplate the relinquishment and transfer of the segment of State Route 1 bypassed by the Tunnel and certain other public access improvements to a permanent operating entity; and

WHEREAS, in the event a transfer to such entity is not achieved, the Coastal Development Permit and the Local Coastal Plan require the County of San Mateo to accept responsibility for opening and operating the bypassed segment of State Route 1 as a non-motorized trail; and

WHEREAS the California Department of Transportation ("Caltrans") owns the bypassed segment of State Route 1 (hereinafter the "Bypassed Segment") and has constructed the public access improvements and collateral facilities on and adjacent to,

the Bypassed Segment and now wishes to convey the State's right, title and interest in and to the Bypassed Segment, along with certain public access improvements, identified as REL-55101 and Segment 1 on attached Exhibits A and B, excepting and reserving to the State of California rights for access under the provisions of Section 73 of the Streets and Highways Code; and

WHEREAS, Caltrans has acquired fee title to five parcels to the west of the Bypassed Segment, as well as an ingress and egress easement to the east of the Bypassed Segment and these parcels and the easement are identified in the attached Exhibits A and B as Parcels 1 through 6, (hereinafter "Adjacent Lands"); and

WHEREAS, Section 73 of the Streets and Highways Code requires that the State notify any County to whom the State intends to relinquish a highway and/or collateral facilities of its intent to do so not less than ninety (90) days before recordation of such relinquishment; and

WHEREAS, Section 73 of the Street and Highways Code further provides that, within that ninety (90) day period, the County Board of Supervisors may protest in writing to Caltrans providing the reasons for protesting the relinquishment; and

WHEREAS, Section 118 of the Streets and Highways Code provides that real property acquired by the State for highway purposes and no longer necessary for those purposes may be sold upon terms, standards, and conditions established by the California Transportation Commission; and

WHEREAS, and the County agrees to the transfer of the Adjacent Lands from

the State to the County at no cost to the County pursuant to the terms and conditions contained in the Agreement with Caltrans, which terms include a covenant to preserve historic resources on Right of Way Parcel 59336 (APN 023-742-020) through the County's Historic Society, to the extent funds are made available; and

WHEREAS, the County intends to incorporate the Bypassed Segment and Adjacent Lands into the County's park system for public use as a segment of the California Coastal Trail, to the extent funds are made available; and

WHEREAS, the County anticipates that the California Transportation Commission will approve the terms of the relinquishment and transfer at its meeting on August 6, 2013.

NOW THEREFORE, IT IS HEREBY DETERMINED AND ORDERED that the Board of Supervisors hereby waives the County's right to protest the California State Department of Transportation's written notice of intent to relinquish the Bypassed Segment; and

IT IS FURTHER DETERMINED AND ORDERED that the County Manager or his designee is authorized to execute all documents required to accept fee title to the Bypassed Segment; fee title to five parcels located immediately to the west of the Bypassed Segment; and an easement interest located to the east of the Bypassed Segment.

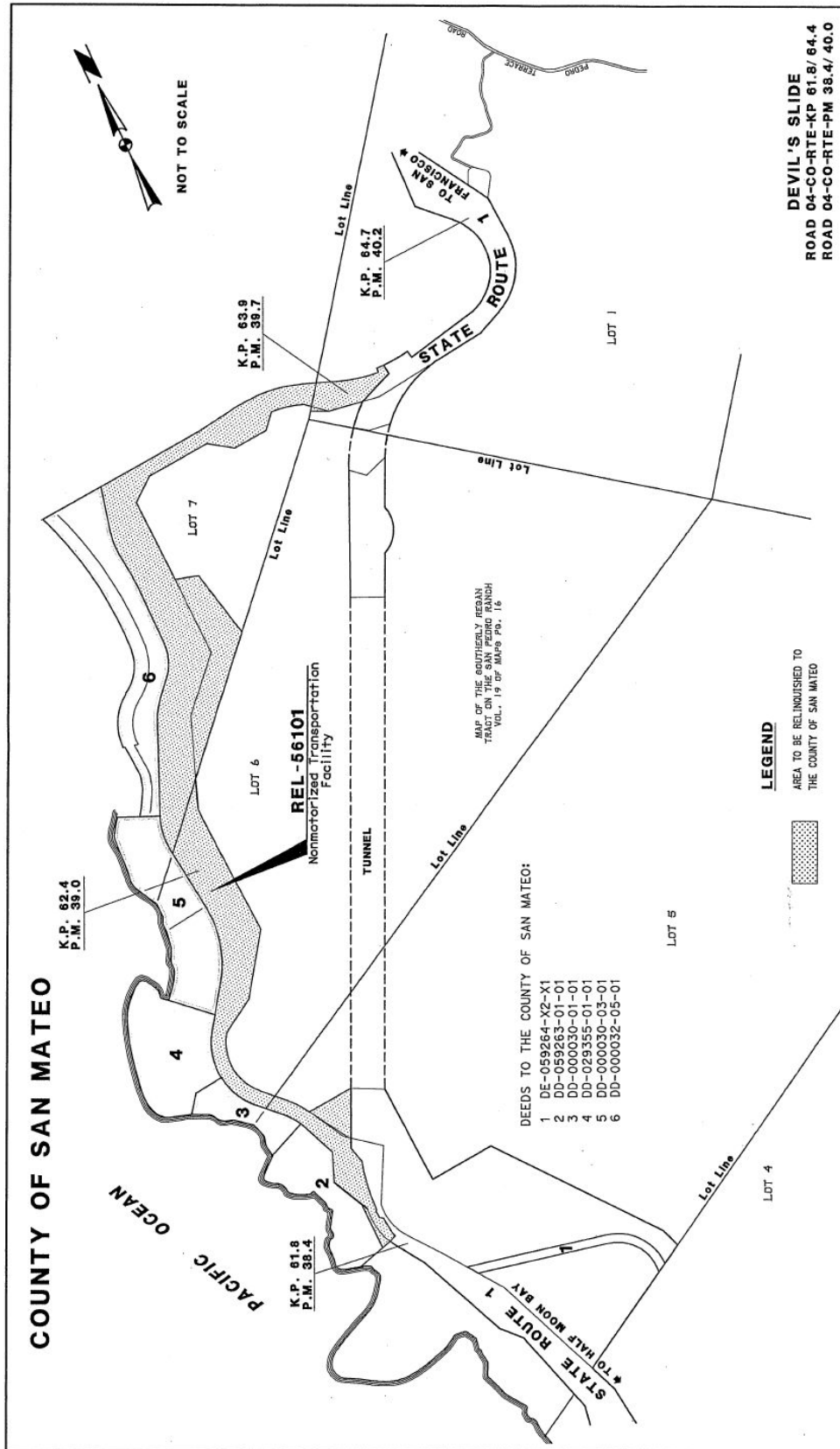


Exhibit A

COORDINATES, BEARINGS AND DISTANCES SHOWN ARE ON THE CALIFORNIA COORDINATE SYSTEM 1983 ZONE 1 IN METERS. DISTANCES ARE SHOWN IN FEET AND METERS. DISTANCES TO THE U.S. SURVEY FEET, METERS, DISTANCES BY 32.1777/1000

COUNTY OF SAN MATEO

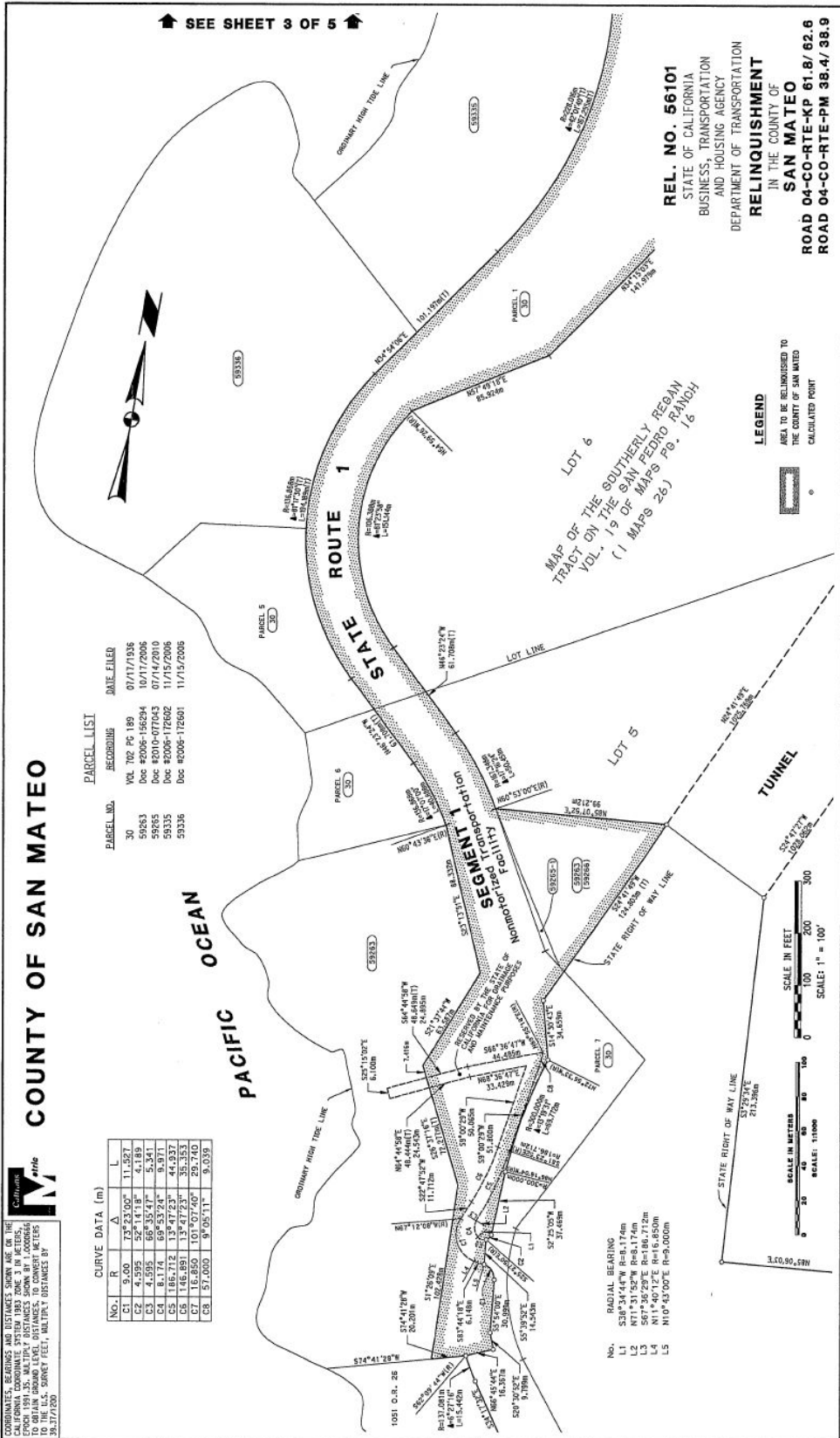
PARCEL LIST

PARCEL NO.	RECORDING	DATE FILED
30	VOL 702 PG 89	07/17/936
59553	Doc #2006-16294	10/17/2006
59555	Doc #2010-07043	07/14/2010
59535	Doc #2006-17260	11/15/2006
59536	Doc #2006-17260	11/15/2006

CURVE DATA (m)

NO.	R	Δ	L
C1	9.00	73°22'00"	11.327
C2	4.50	22°11'18"	4.189
C3	4.50	22°11'18"	4.189
C4	8.174	69°53'24"	9.971
C5	186.712	13°47'23"	44.937
C6	146.891	13°47'23"	35.353
C7	16.850	101°07'40"	29.740
C8	37.053	9°05'11"	9.539

SEE SHEET 3 OF 5



REL. NO. 56101
STATE OF CALIFORNIA
BUSINESS, TRANSPORTATION
AND HOUSING AGENCY
DEPARTMENT OF TRANSPORTATION

RELINQUISHMENT
IN THE COUNTY OF
SAN MATEO
ROAD 04-CO-RTE-KP 61.8/ 62.6
ROAD 04-CO-RTE-PM 38.4/ 38.9

LEGEND
AREA TO BE RELINQUISHED TO
THE COUNTY OF SAN MATEO
CALCULATED POINT

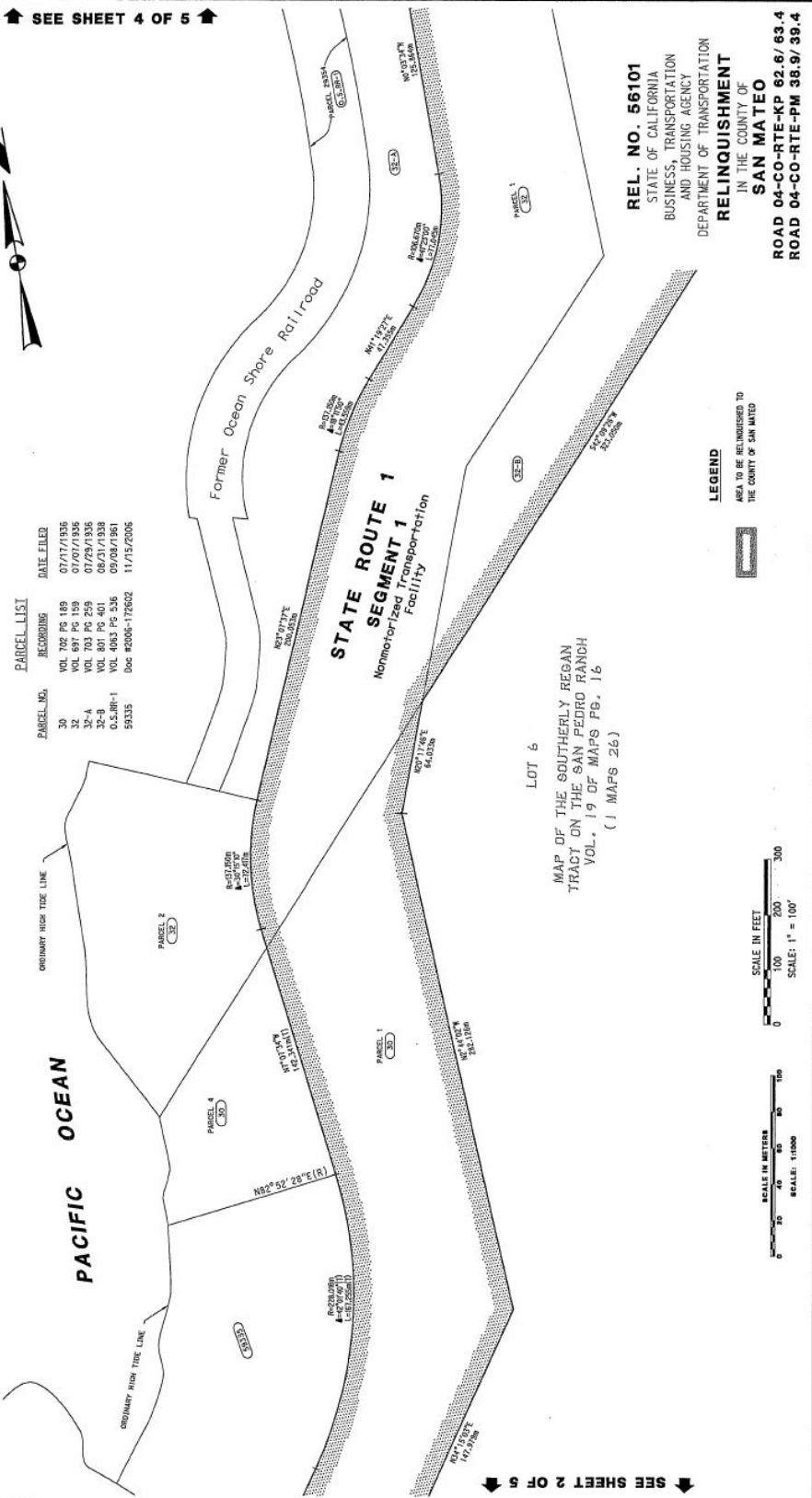
M-1582		REL. NO. 56101		CONTRACT NO. 112304		SHEET 2 OF 5	
DR BY:	A.L.	DATE:	02/2013	L.A.I. PROJECT:	112304	MAP REFERENCE:	OTHER:
CK BY:	A.L.			H.C. APPRAISAL:	A-10238.1 TO 3	BOOKING:	R-509.13



COORDINATES, BEARINGS AND DISTANCES SHOWN ARE ON THE CALIFORNIA COORDINATE SYSTEM 1983 ZONE 3 IN METERS, EXCEPT WHERE SHOWN OTHERWISE. DISTANCES SHOWN IN FEET ARE UNLESS OTHERWISE NOTED TO THE U.S. SURVEY FEET. MATURITY DISTANCES BY 29.377/200

COUNTY OF SAN MATEO

SEE SHEET 4 OF 5



PARCEL NO.	RECORDING	DATE FILED
30	VOL 702 PG 149	07/07/1936
32	VOL 592 PG 149	07/07/1936
32-A	VOL 703 PG 259	07/29/1936
32-B	VOL 801 PG 401	08/31/1938
0.5.100-1	VOL 4983 PG 536	09/08/1961
59335	Doc #2006-17602	11/15/2006

REL. NO. 56101
STATE OF CALIFORNIA
BUSINESS, TRANSPORTATION
AND HOUSING AGENCY
DEPARTMENT OF TRANSPORTATION
RELINQUISHMENT
IN THE COUNTY OF
SAN MATEO

ROAD 04-CO-RTE-KP 82.6/ 63.4
ROAD 04-CO-RTE-PM 38.9/ 39.4

LEGEND
AREA TO BE RELINQUISHED TO
THE COUNTY OF SAN MATEO



LOT 6
MAP OF THE SOUTHERLY REGAN
TRACY ON THE SAN PEDRO RANCH
VOL. 19 OF MAPS PG. 16
(1 MAPS 26)

M-1582	DR BY: A.L.	DATE: 05/20/13	REL. NO. 56101	CONTRACT NO. 1123U4	EAL: 112302	PROJECT: A.L.	H.C.: A-10228.3 & 5	APPRaisal: R-509.19	RECORD: R-509.19	OTHER:
MAP REFERENCE										

Culture
M *et al.*

COORDINATES, BEARINGS AND DISTANCES SHOWN ARE ON THE CALIFORNIA COORDINATE SYSTEM 1983 ZONE 3 IN METERS, EPOCH 1991.35. MULTIPLY DISTANCES SHOWN BY 1.0000666 TO OBTAIN GROUND LEVEL DISTANCES, TO CONVERT METERS TO THE U.S. SURVEY FEET, MULTIPLY DISTANCES BY 30.37/100.

COORDINATES, BEARINGS AND DISTANCES SHOWN ARE ON THE CALIFORNIA COORDINATE SYSTEM 1983 ZONE 3 IN METERS, EPOCH 1991.35. MULTIPLY DISTANCES SHOWN BY 1.00020668 TO OBTAIN GROUND LEVEL DISTANCES. TO CONVERT METERS TO THE U.S. SURVEY FEET, MULTIPLY DISTANCES BY 0.3048006096.

↓ SEE SHEET 3 OF 5 ↓

PARCEL NO.	RECORDING	DATE FILED
32	VOL 697 PG 159	07/07/1936
32-A	VOL 703 PG 259	07/29/1936
32-B	VOL 801 PG 401	08/31/1938
0.5-RR-1	VOL 4063 PG 536	09/08/1961
59397	Doc #2005-115656	07/12/2005



AREA TO BE RELINQUISHED TO
THE COUNTY OF SAN MATEO

SAN MATEO
ROAD 04-CO-RTE-KP 63.4/64.0

ROAD 04-CO-RTE-KP 63.4/ 64.0

SHEET 4 OF 8

MAP REFERENCE	
MISAL	RECORD

E.A.:	112302
NO. 100	

CONTRACT NO. 1123U4

REL. NO. 56101

DATE _____

0709

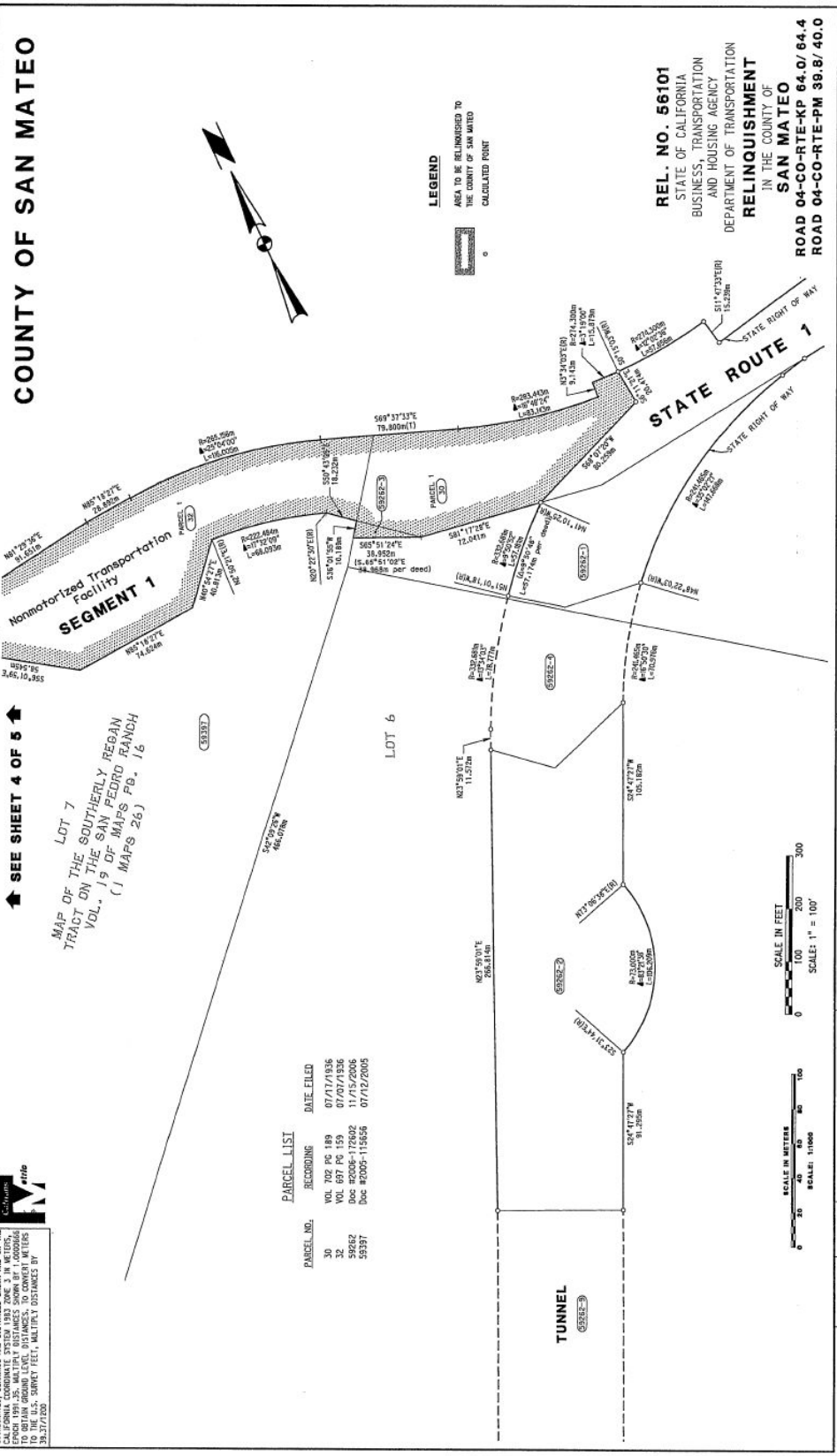
M-1582

COORDINATES, BEARINGS AND DISTANCES SHOWN ARE ON THE
 ENGINEER'S PLAT. DISTANCES ARE IN FEET. TO OBTAIN
 TO OBTAIN GROUND LEVEL DISTANCES, TO CONVERT METERS
 TO FEET, MULTIPLY METERS BY 3.28084.



SEE SHEET 4 OF 5
 MAP OF THE SOUTHERLY REGAN
 TRACT ON THE SAN PEDRO RANCH
 VOL. 19 OF MAPS PG. 16
 (1 MAPS 26)

COUNTY OF SAN MATEO



PARCEL LIST

PARCEL NO.	RECORDING	DATE FILED
30	VOL 702 PG 189	07/17/1936
32	VOL 697 PG 159	07/07/1936
59622	DWG #2005-112642	11/15/2006
59397	DWG #2005-115656	07/12/2005

M-1582	DATE	05/20/13	REL. NO. 56101	CONTRACT NO. 1123U4	E.A. 112382 PROJECT SHEETS	H.C. 112382 A-10238.5 & 6	MAP REFERENCE RECORD A-505.19	OTHER
	DATE	05/20/13						