

CURVE TABLE		
NO. RADIOS	DELTA	LENGTH
C1	160.00'	330.00'
C2	150.00'	225.00'
C3	30.00'	60.00'
C4	9.00'	18.00'
C5	25.00'	50.00'
C6	150.00'	300.00'
C7	150.00'	300.00'

LINE TABLE		
NO.	BEARING	LENGTH
L1	N87°53'41"E	28.80'
L2	N89°55'24"W	184.36'
L3	N87°53'41"E	236.14'
L4	N87°53'41"E	170.03'
L5	N23°55'39"W	129.90'
L6	N73°00'17"W	104.82'
L7	N42°00'17"W	182.28'
L8	N87°11'08"W	14.14'
L9	N87°11'08"W	18.88'
L10	N87°25'29"W	25.03'
L11	N87°25'29"W	25.03'

BASIS OF BEARINGS:

THE BASIS OF BEARINGS FOR THIS MAP IS THE CENTERLINE OF THE GOLDEN ASTER COURT WHICH BEARS N79°43'31"W PER THE SUBDIVISION MAP ENTITLED "NORTHEAST RIDGE UNIT NO. 1" (125 M 28) AND IS BASED ON THE CALIFORNIA COORDINATE SYSTEM, ZONE 10, NORTH AMERICAN DATUM OF 1973, AS SHOWN ON THE PARCEL MAP RECORDED FEBRUARY 20, 1975, IN BOOK 28 OF PARCEL MAPS AT PAGES 12 AND 13.

REFERENCES:

- (1) SUBDIVISION MAP "NORTHEAST RIDGE UNIT NO. 1" (125 M 28)
- (2) CERTIFICATE OF CORRECTION (SERIES NO. 99-050102)
- (3) RECORD OF SURVEY (8 LLS 23)
- (4) CITY OF BRISBANE PUBLIC WORKS
- (5) SUBDIVISION MAP "NORTHEAST RIDGE UNIT II" (134 M 31)
- (6) INSTRUMENT NO. 2007-072202

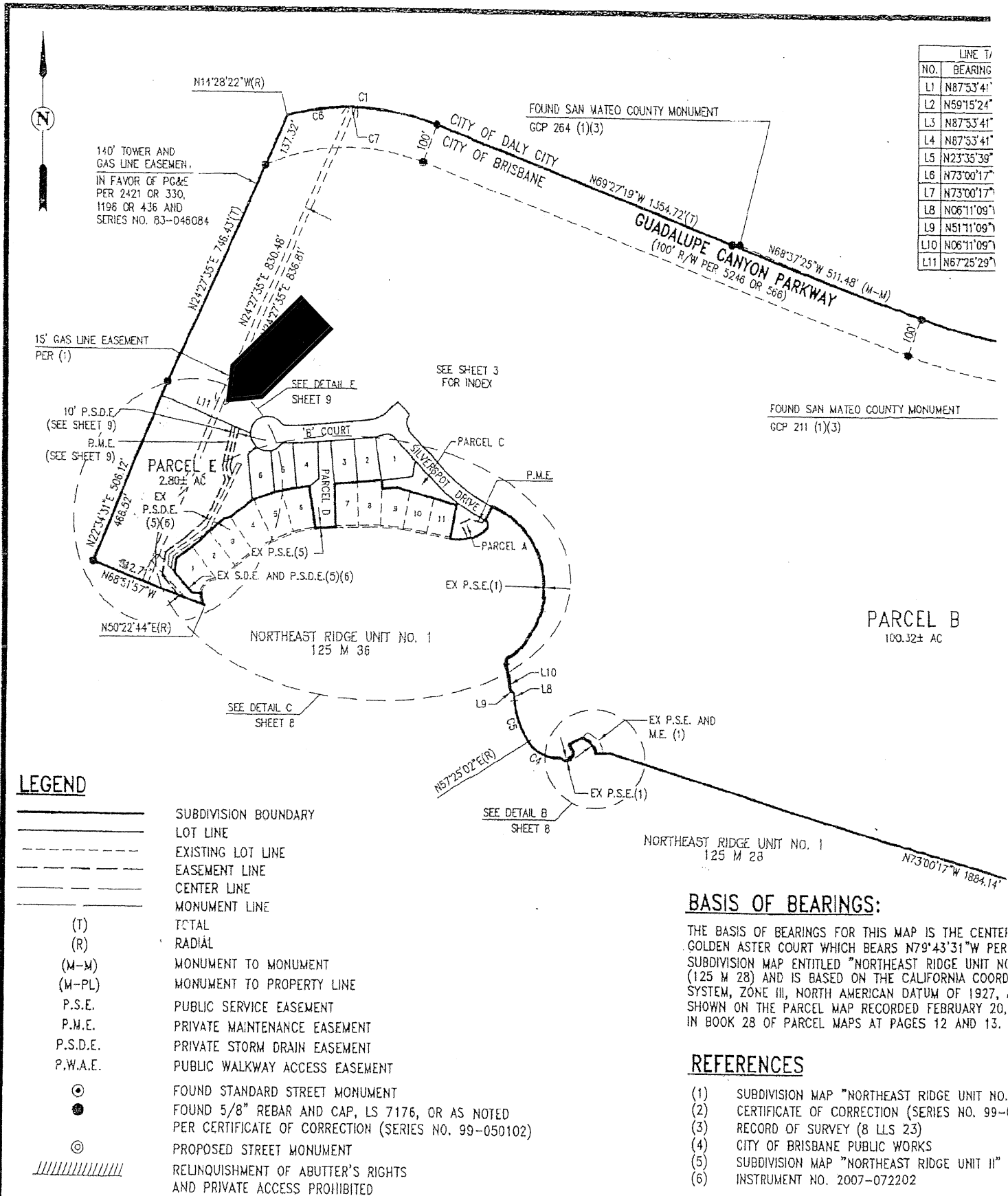
LEGEND

- (1) SUBDIVISION BOUNDARY
- (2) LOT LINE
- (3) EXISTING LOT LINE
- (4) EASEMENT LINE
- (5) CENTER LINE
- (6) MONUMENT LINE
- (7) TOTAL
- (8) RADIAL
- (9) MONUMENT TO MONUMENT
- (10) MONUMENT TO PROPERTY LINE
- (11) PUBLIC SERVICE EASEMENT
- (12) PRIVATE MAINTENANCE EASEMENT
- (13) PRIVATE STORM DRAIN EASEMENT
- (14) PUBLIC WALKWAY ACCESS EASEMENT
- (15) FOUND STANDARD STREET MONUMENT
- (16) FOUND 5/8" REBAR AND CAP, LS 7176, OR AS NOTED PER CERTIFICATE OF CORRECTION (SERIES NO. 99-050102)
- (17) PROPOSED STREET MONUMENT
- (18) RELINQUISHMENT OF ABUTTEE'S RIGHTS AND PRIVATE ACCESS PROHIBITED

NORTHEAST RIDGE LANDMARK AT THE RIDGE UNIT II - 6 LOTS 'B' COURT

CITY OF BRISBANE SAN MATEO COUNTY CALIFORNIA
 BEING ALL OF PARCEL B AS SHOWN ON THAT CERTAIN SUBDIVISION MAP ENTITLED "NORTHEAST RIDGE UNIT II, ADJACENT TO UNIT I - GOLDEN ASTER COURT" RECORDED JULY 24, 2006, IN VOLUME 134 OF MAPS AT PAGE 31, SAN MATEO COUNTY RECORDS
CARLSON, BARBEE & GIBSON, INC.
 ENGINEERS SURVEYORS PLANNERS
 SAN RAMON, CALIFORNIA

Exhibit A - continued



LINE T/	NO.	BEARING
	L1	N87°53'41"
	L2	N59°15'24"
	L3	N87°53'41"
	L4	N87°53'41"
	L5	N23°35'39"
	L6	N73°00'17"
	L7	N73°00'17"
	L8	N06°11'09"
	L9	N51°11'09"
	L10	N06°11'09"
	L11	N67°25'29"

LEGEND

- SUBDIVISION BOUNDARY
- LOT LINE
- - - - - EXISTING LOT LINE
- - - - - EASEMENT LINE
- CENTER LINE
- MONUMENT LINE
- (T) TOTAL
- (R) RADIAL
- (M-M) MONUMENT TO MONUMENT
- (M-PL) MONUMENT TO PROPERTY LINE
- P.S.E. PUBLIC SERVICE EASEMENT
- P.M.E. PRIVATE MAINTENANCE EASEMENT
- P.S.D.E. PRIVATE STORM DRAIN EASEMENT
- P.W.A.E. PUBLIC WALKWAY ACCESS EASEMENT
- ⊙ FOUND STANDARD STREET MONUMENT
- FOUND 5/8" REBAR AND CAP, LS 7176, OR AS NOTED PER CERTIFICATE OF CORRECTION (SERIES NO. 99-050102)
- ⊙ PROPOSED STREET MONUMENT
- ////// RELINQUISHMENT OF ABUTTER'S RIGHTS AND PRIVATE ACCESS PROHIBITED

BASIS OF BEARINGS:

THE BASIS OF BEARINGS FOR THIS MAP IS THE CENTER GOLDEN ASTER COURT WHICH BEARS N79°43'31"W PER SUBDIVISION MAP ENTITLED "NORTHEAST RIDGE UNIT NO. (125 M 28) AND IS BASED ON THE CALIFORNIA COORD SYSTEM, ZONE III, NORTH AMERICAN DATUM OF 1927, SHOWN ON THE PARCEL MAP RECORDED FEBRUARY 20, IN BOOK 28 OF PARCEL MAPS AT PAGES 12 AND 13.

REFERENCES

- (1) SUBDIVISION MAP "NORTHEAST RIDGE UNIT NO.
- (2) CERTIFICATE OF CORRECTION (SERIES NO. 99-050102)
- (3) RECORD OF SURVEY (8 LLS 23)
- (4) CITY OF BRISBANE PUBLIC WORKS
- (5) SUBDIVISION MAP "NORTHEAST RIDGE UNIT II" INSTRUMENT NO. 2007-072202
- (6)

Exhibit B

JULY 25, 2011
JOB NO.: 779-25

**LEGAL DESCRIPTION
PARCEL E (135 M 69)
BRISBANE, CALIFORNIA**

REAL PROPERTY, SITUATE IN THE INCORPORATED TERRITORY OF THE CITY OF BRISBANE, COUNTY OF SAN MATEO, STATE OF CALIFORNIA, DESCRIBED AS FOLLOWS:

BEING ALL OF PARCEL E, AS SAID PARCEL E IS SHOWN AND SO DESIGNATED ON THAT CERTAIN FINAL MAP RECORDED AUGUST 22, 2007, IN BOOK 135 OF MAPS, AT PAGE 69, IN THE OFFICE OF THE COUNTY RECORDER OF SAN MATEO COUNTY.

END OF DESCRIPTION



Christopher S. Harmison
CHRISTOPHER S. HARMISON, P.L.S.
L.S. NO. 7176