



Reimagine Juvenile Hall Committee



Juvenile Justice & Delinquency Prevention Commission

Reimagine Juvenile Hall Resolution

October 2021

“NOW, THEREFORE, IT IS HEREBY DETERMINED AND ORDERED that the County establish a committee whose purpose is

to create a plan to modify the current institutional setting at the YSC, so it conveys a more supportive environment for detained juveniles in San Mateo County.”

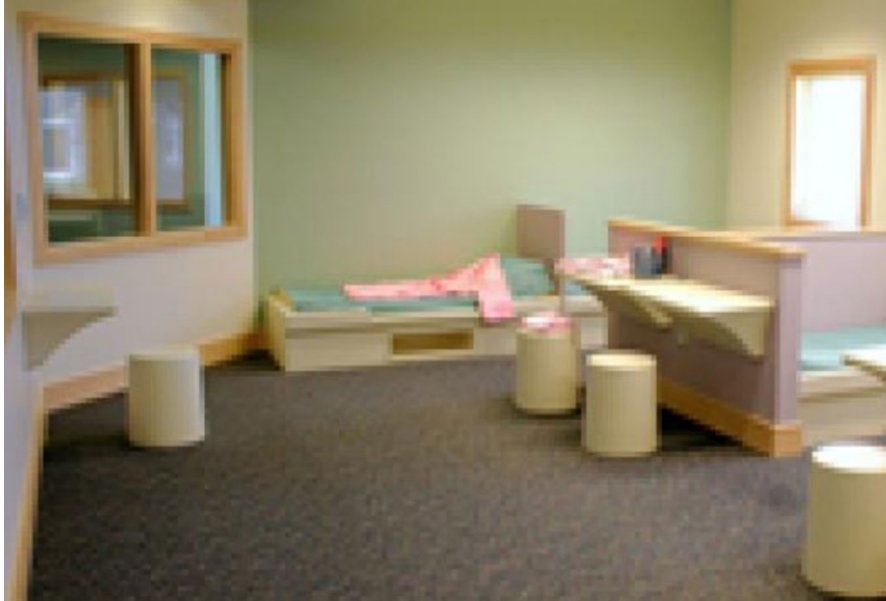
Institutional Setting at Juvenile Hall



“The units youth live on, and the rooms they sleep in, are sterile institutional environments.”

An institutional setting is not conducive to teen mental health.

Camp Kemp for Girls is a model facility



Dorm-like setting

Programs that work

We need better alternatives for boys



Since the closure of Camp Glenwood in 2019, boys have not had the same opportunities that girls do at Camp Kemp.

Photo credit: Silicon Valley De-Bug