



Exhibit A

FOR SALE

1245 San Carlos Ave

SAN CARLOS, CA



ONLY 1
UNIT LEFT



Retail/Commercial Condominium Units in Downtown San Carlos

FOR SALE unit pricing below

SUITE A & B (Sold)

SUITE C: (Sold)

SUITE D: (Sold)

SUITE E: \$1,988,000

UNIT E has ±2,841 RSF

MONTHLY ASSOCIATION FEE:

\$.14 PSF/month estimated

ON-SITE parking open to the public

OUTSIDE seating possible

RESERVED and secure onsite parking
for employees

18-20 FOOT ceiling height

"WALKER'S PARADISE" walk score of
91 on WalkScore.com

1 BLOCK to the San Carlos
Caltrain station

BRETT WEBER

650.771.3000

brett.weber@kidder.com

LIC N° 00901454

STEVE DIVNEY

650.400.8065

steve.divney@kidder.com

LIC N° 01216239

JOHN MCLELLAN

415.418.9880

john.mclellan@kidder.com

LIC N° 01869489

KIDDER.COM

This information supplied herein is from sources we deem reliable. It is provided without any representation, warranty, or guarantee, expressed or implied as to its accuracy. Prospective Buyer or Tenant should conduct an independent investigation and verification of all matters deemed to be material, including, but not limited to, statements of income and expenses. Consult your attorney, accountant, or other professional advisor.

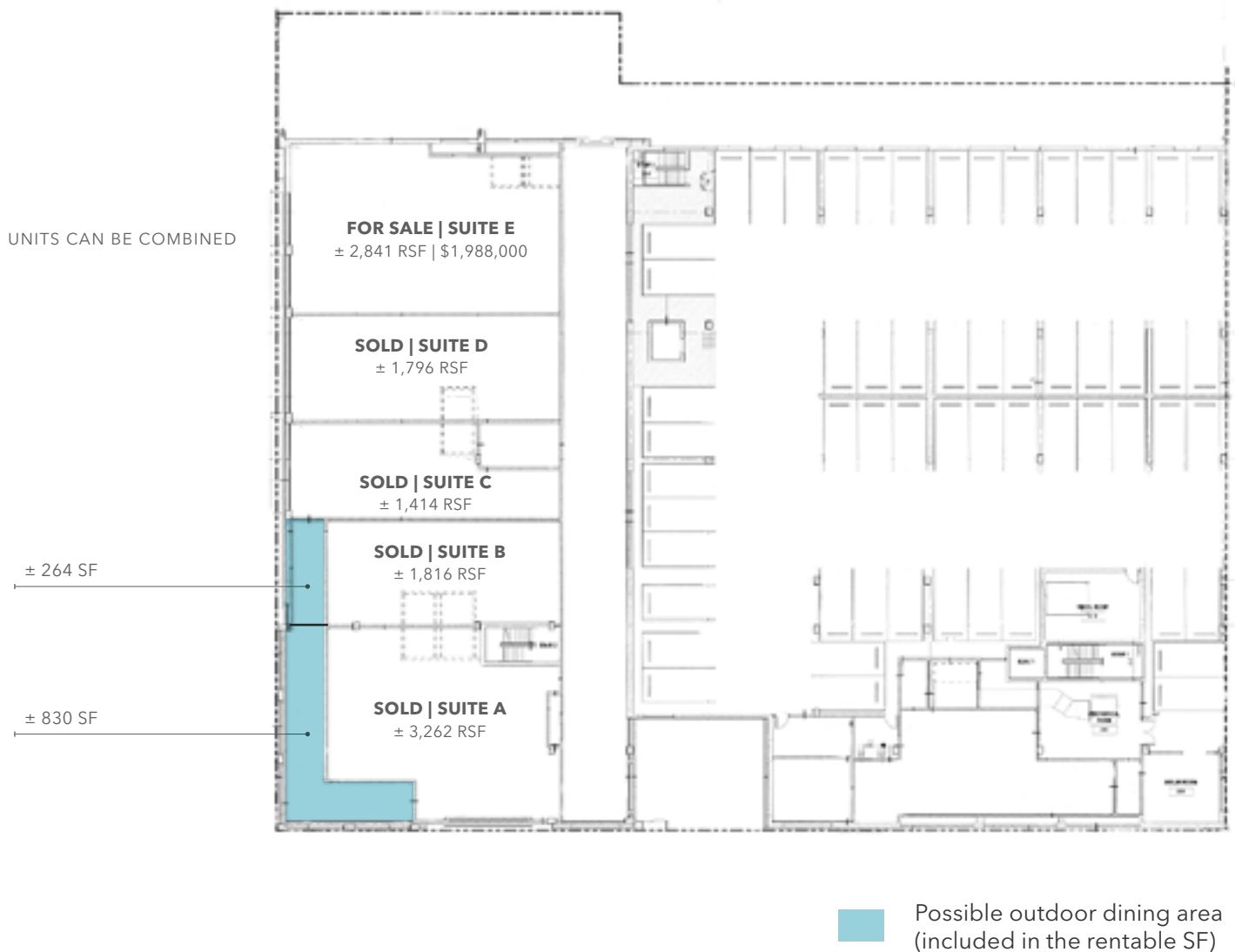
**Kidder
Mathews**

FOR SALE

1245 San Carlos Ave

SAN CARLOS, CA

Floorplan



BRETT WEBER

650.771.3000

brett.weber@kidder.com

LIC N° 00901454

STEVE DIVNEY

650.400.8065

steve.divney@kidder.com

LIC N° 01216239

JOHN MCLELLAN

415.418.9880

john.mclellan@kidder.com

LIC N° 01869489

KIDDER.COM

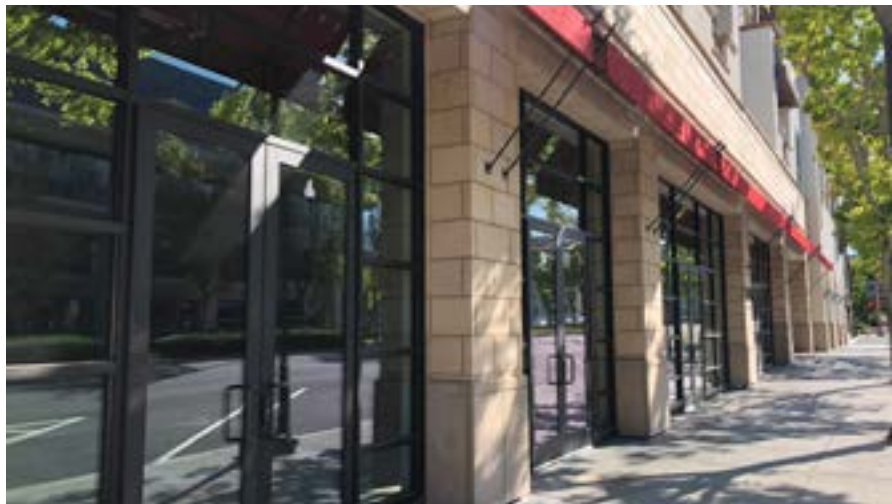
This information supplied herein is from sources we deem reliable. It is provided without any representation, warranty, or guarantee, expressed or implied as to its accuracy. Prospective Buyer or Tenant should conduct an independent investigation and verification of all matters deemed to be material, including, but not limited to, statements of income and expenses. Consult your attorney, accountant, or other professional advisor.

km Kidder
Mathews

FOR SALE

1245 San Carlos Ave

SAN CARLOS, CA



BRETT WEBER

650.771.3000

brett.weber@kidder.com

LIC N° 00901454

STEVE DIVNEY

650.400.8065

steve.divney@kidder.com

LIC N° 01216239

JOHN MCLELLAN

415.418.9880

john.mclellan@kidder.com

LIC N° 01869489

KIDDER.COM

This information supplied herein is from sources we deem reliable. It is provided without any representation, warranty, or guarantee, expressed or implied as to its accuracy. Prospective Buyer or Tenant should conduct an independent investigation and verification of all matters deemed to be material, including, but not limited to, statements of income and expenses. Consult your attorney, accountant, or other professional advisor.

km Kidder
Mathews

FOR SALE

1245 San Carlos Ave

SAN CARLOS, CA



BRETT WEBER
650.771.3000
brett.weber@kidder.com
LIC N° 00901454

STEVE DIVNEY
650.400.8065
steve.divney@kidder.com
LIC N° 01216239

JOHN MCLELLAN
415.418.9880
john.mclellan@kidder.com
LIC N° 01869489

KIDDER.COM

This information supplied herein is from sources we deem reliable. It is provided without any representation, warranty, or guarantee, expressed or implied as to its accuracy. Prospective Buyer or Tenant should conduct an independent investigation and verification of all matters deemed to be material, including, but not limited to, statements of income and expenses. Consult your attorney, accountant, or other professional advisor.

