

COUNTY OF SAN MATEO



SAN MATEO
COUNTY HEALTH
All together better.

All Together Better 2023-25 Budget Presentation

Louise F. Rogers, Chief
June 28, 2023

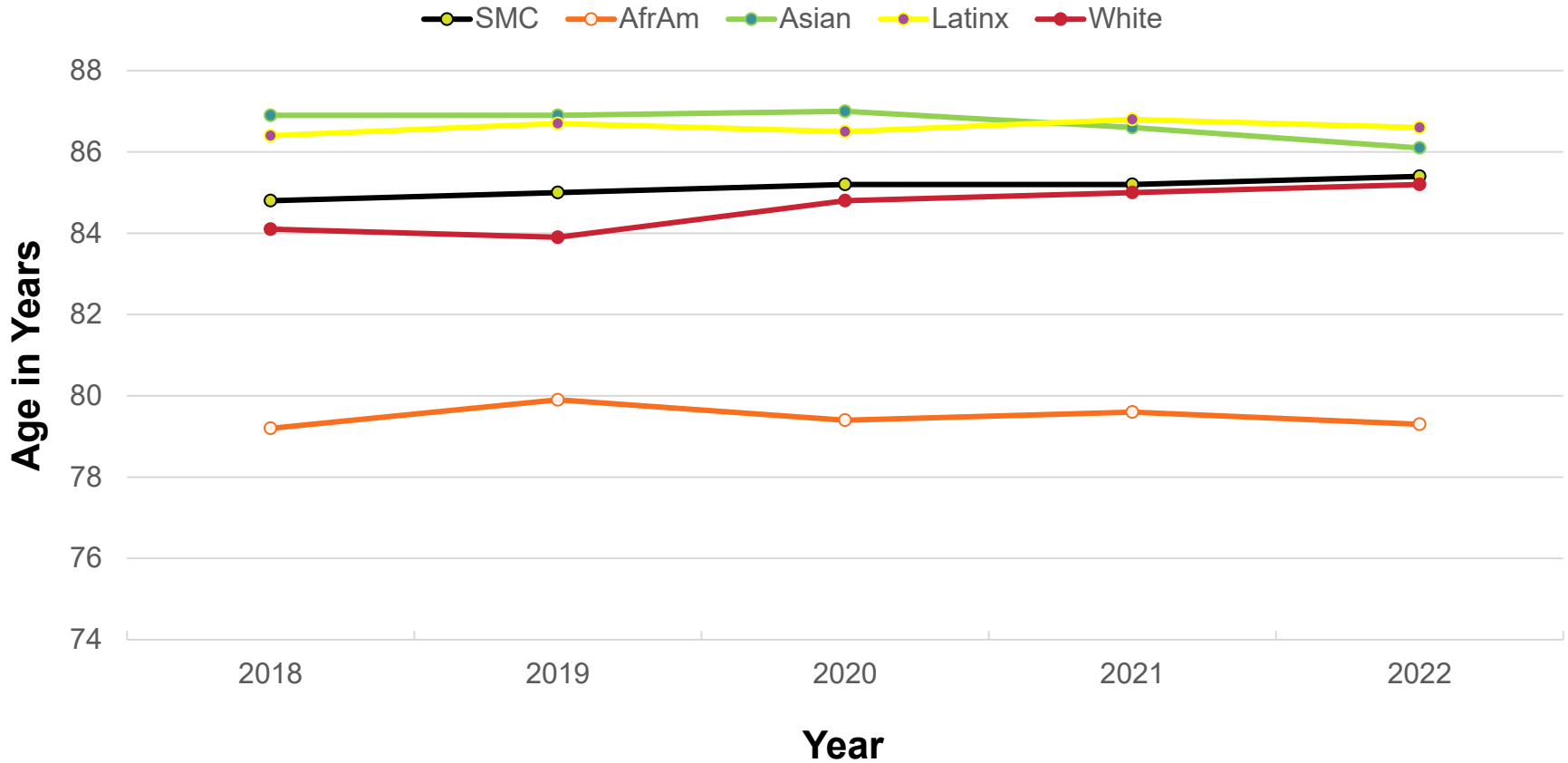


SAN MATEO COUNTY HEALTH

All together better.

Our mission is to help everyone
in San Mateo County live
longer and better lives.

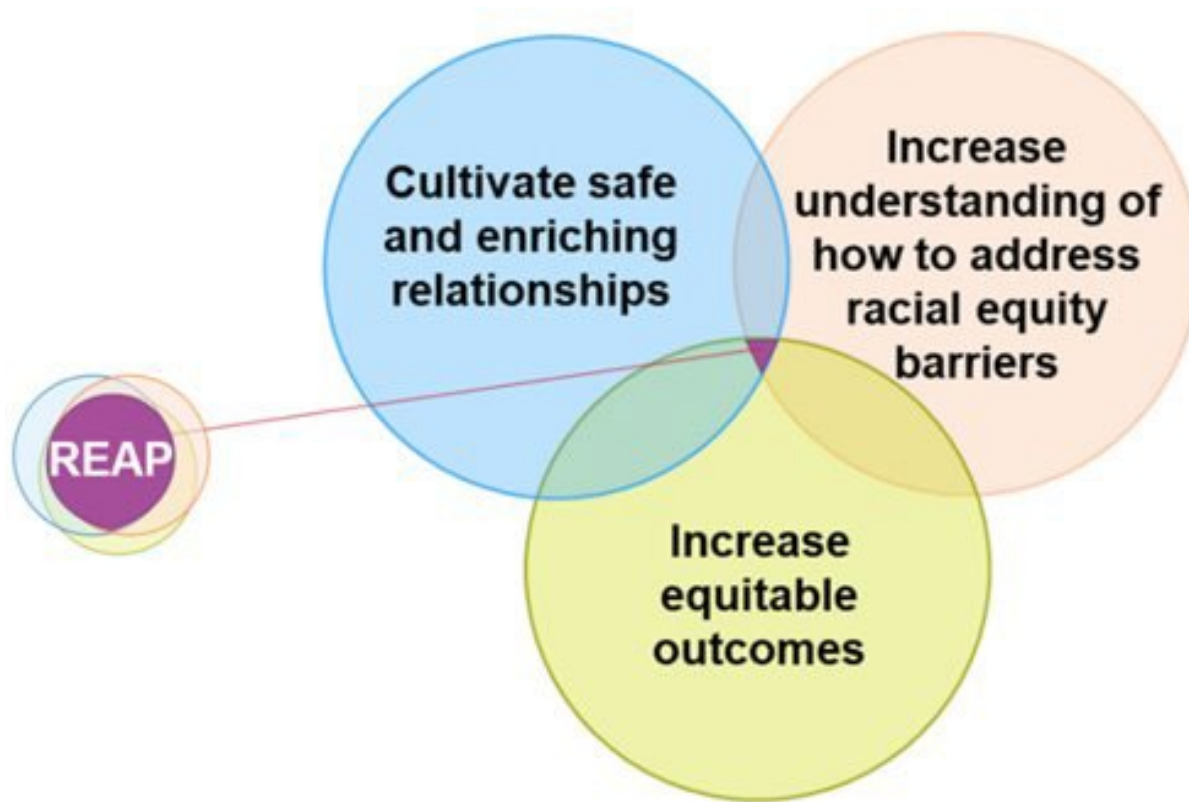
Life Expectancy at Birth by Race/Ethnicity San Mateo County, 2018-2022



Notes:

- Data are preliminary and subject to change
- AI/AN, NHPI, and Multi-race estimates are not shown due to small numbers
- African American data are 5-year estimates

Racial Equity Action Plan



Applying lessons learned from clients, patients, partners, staff and the pandemic to reduce inequitable disparities and help residents live longer and better lives.

Equity Accomplishments Highlights

- **Disaggregated race/ethnicity and geographic data** to target COVID vaccination efforts and reduce the gaps
- **Race, Health and Equity training reached 1,157 staff** by May 31 for FY 2022-23
- **Introduced improvements in recruitment and hiring:**
 - ✓ Diversity, equity, inclusion & belonging question bank
 - ✓ Recruiting checklist
- **Conducted 12 focus groups with 32 staff** regarding their experiences of racism with clients/patients
- **Developing protocols** in FY 23-24



FY 2023-25 Budget Overview

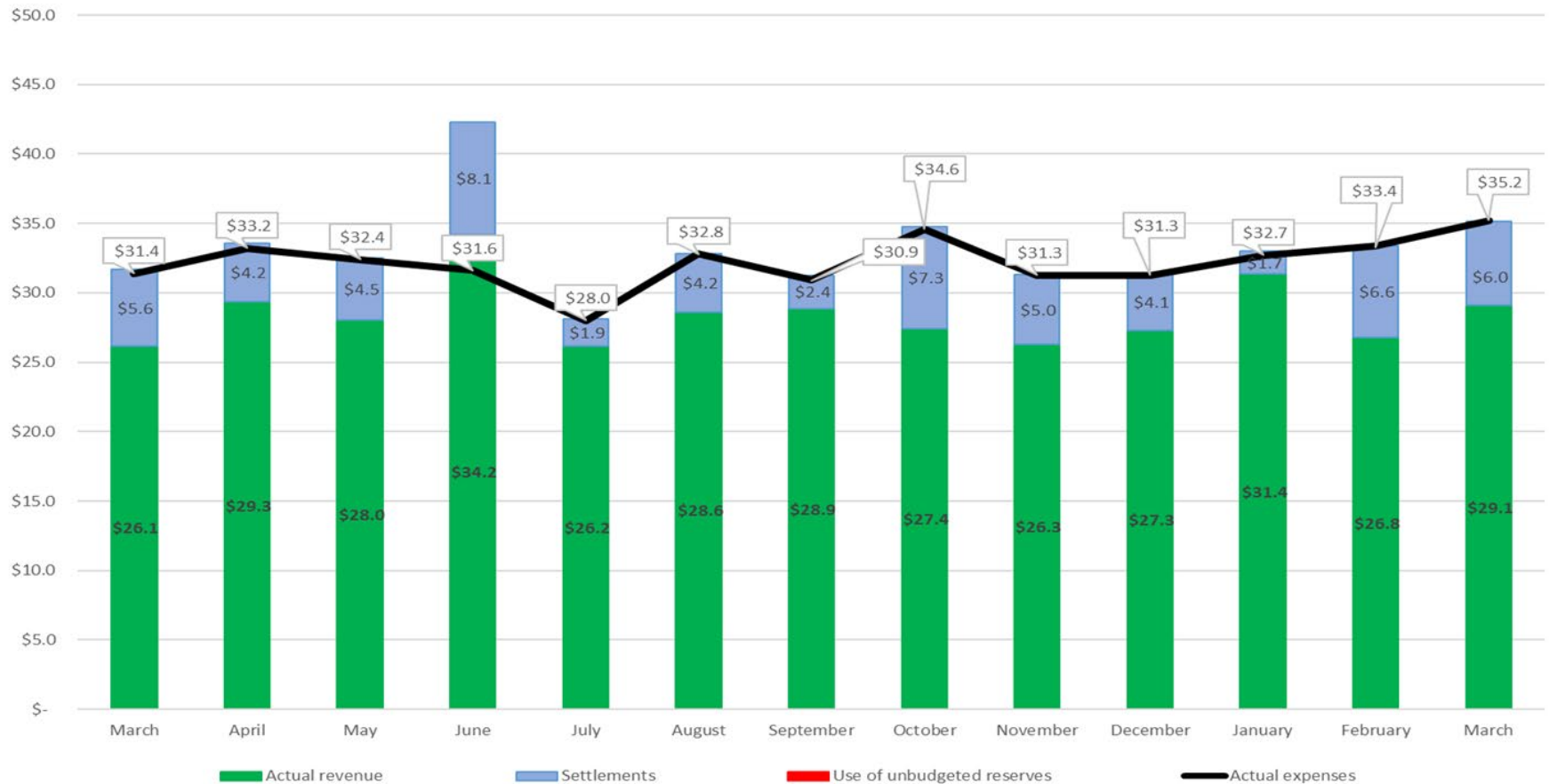
	FY 2022-23 Revised	FY 2023-24 Recommended	% Change	FY 2024-25 Preliminary Recommended
Total Sources	845,615,101	1,002,522,600	19%	963,287,198
Total Requirements	1,049,068,280	1,200,992,058	14%	1,165,537,824
Net County Cost	203,453,179	198,469,458	(2%)	202,250,626
Total Positions	2,253	2,327	3%	2,329

FY 2023-25 SMMC Budget Overview

	FY 2022-23 Revised	FY 2023-24 Recommended	% Change	FY 2024-25 Preliminary Recommended
Total Sources	435,499,643	474,852,108	9%	481,965,185
Total Requirements	435,499,643	474,852,108	9%	481,965,185
Net County Cost*	59,584,986	58,053,455	-3%	58,053,455
Total Positions	1,043	1,043	0%	1,043

*Net County Cost for SMMC is included in Total Sources.

FY 2022-23 SMMC Revenue & Expense



SMMC submitted an application to the State to increase its FQHC reimbursement rates, the projected impact of which is \$22 million and is included in the FY2023-25 budget.

Note: Volume %s are Current Month/YTD actuals vs budget

Priorities & Challenges 23-25

Implementing New Electronic Health Record

Priorities

- Improved care coordination
- Patient, client & staff experience
- Enhanced data accessibility
- Efficiencies and cost savings



Challenges

- Cost and resources: software, hardware, hiring staff, training
- Data Interoperability: integration of disparate systems
- Organizational Change Management: all of SMC Health affected
- Data Privacy & Security: robust security measures needed

Priorities & Challenges 23-25

Medi-Cal Reforms

Priorities:

- Expansion of Medi-Cal coverage
- Elimination of asset limit for Medi-Cal
- Enhanced care management through Health Plan of San Mateo

Challenges:

- Redetermination requirements may lead to loss of coverage
- BHRS documentation and claiming requirements are changing



Priorities & Challenges 23-25

Meeting Needs of Unhoused Residents

- Navigation Center partnerships with Healthcare in Action & El Centro
- Expansion of Homeless Engagement Assessment and Linkage team and Integrated Medication Assistance Team (IMAT) to partner with Homeless Outreach Teams
- Two-exam-room medical clinic and two-chair dental clinic



Priorities & Challenges 23-25

Additional Investments in Housing for Clients with Mental Illness and Addictions

- BHRS Helping Our Peers Emerge (HOPE) assigns a peer with lived experience to a client ready for discharge to a lower level of care
- BHRS housing funds \$10M to Housing Department
- BHRS \$11M for acquisition of hotels
- BHRS \$4M grant for residential care support



Priorities & Challenges 23-25

Expanding Evidence-Based Treatment for Clients with Opioid Addictions

- Opioid Settlement funds \$730k expansion in Integrated Medication Assisted Treatment (IMAT) with additional support from cities
- Partnership between BHRS and CHS to expand IMAT for inmates — leverages Psychiatry Residency Training program & \$70K grant from the CA Academy of Family Physicians and + funding for meds



Priorities & Challenges 23-25

Learning from Experience with Crises

- BHRS expansion of community crisis response to enlist more nonprofit and community volunteers
- BHRS/StarVista/local police: Community Wellness and Response Team grant-funded expansion to new cities: San Bruno, Menlo Park, East Palo Alto, Foster City, North Fair Oaks, Pacifica
- Environmental Health Services (EHS) partners with County Planning & Building on farmworker housing response



Priorities & Challenges 23-25

Meeting Behavioral Health Needs of Children & Youth

- BHRS and County Office of Ed partnering on planning with stakeholders for school age youth mental health to identify gaps and try to align investments and future efforts
- Strengthened tobacco ordinance in partnership with cities
- Expansion of primary care - based mental health services to respond to increased pediatric referrals
- Child Welfare partnership social worker for complex cases



New Equity-Aligned Performance Measure

Aging and Adult Services

In Home Supportive Services (IHSS)

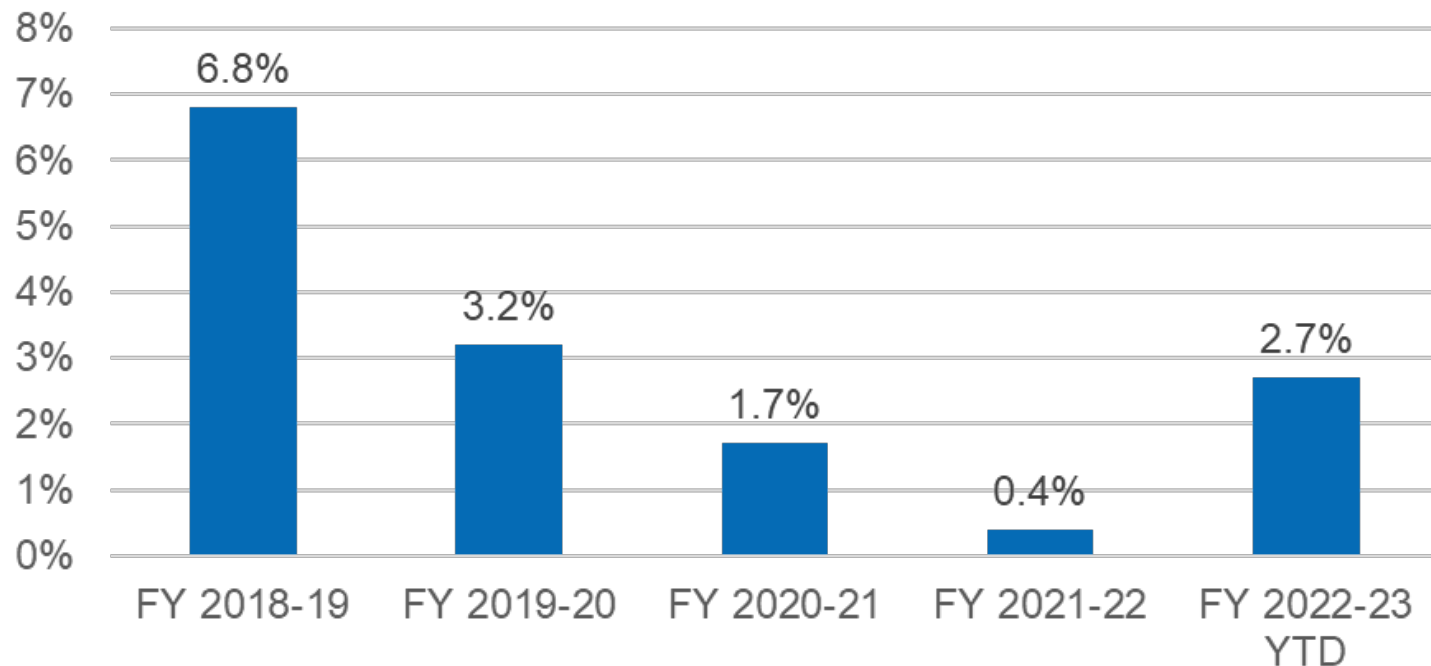
- Increase percentage of bivalent vaccination rate of IHSS clients from 36% to 50% with focus to address potential disparities among 6 racial groups
- Increase percentage of bilingual IHSS Registry providers from 45% to 55% to meet client needs



New Equity-Aligned Performance Measures

San Mateo Medical Center

Disparity in Hypertension Control,
All Patients to Black/African American Patients



All metric-qualifying patients for 2023 = 7,240
Black/AA metric-qualifying patients for 2023 = 274

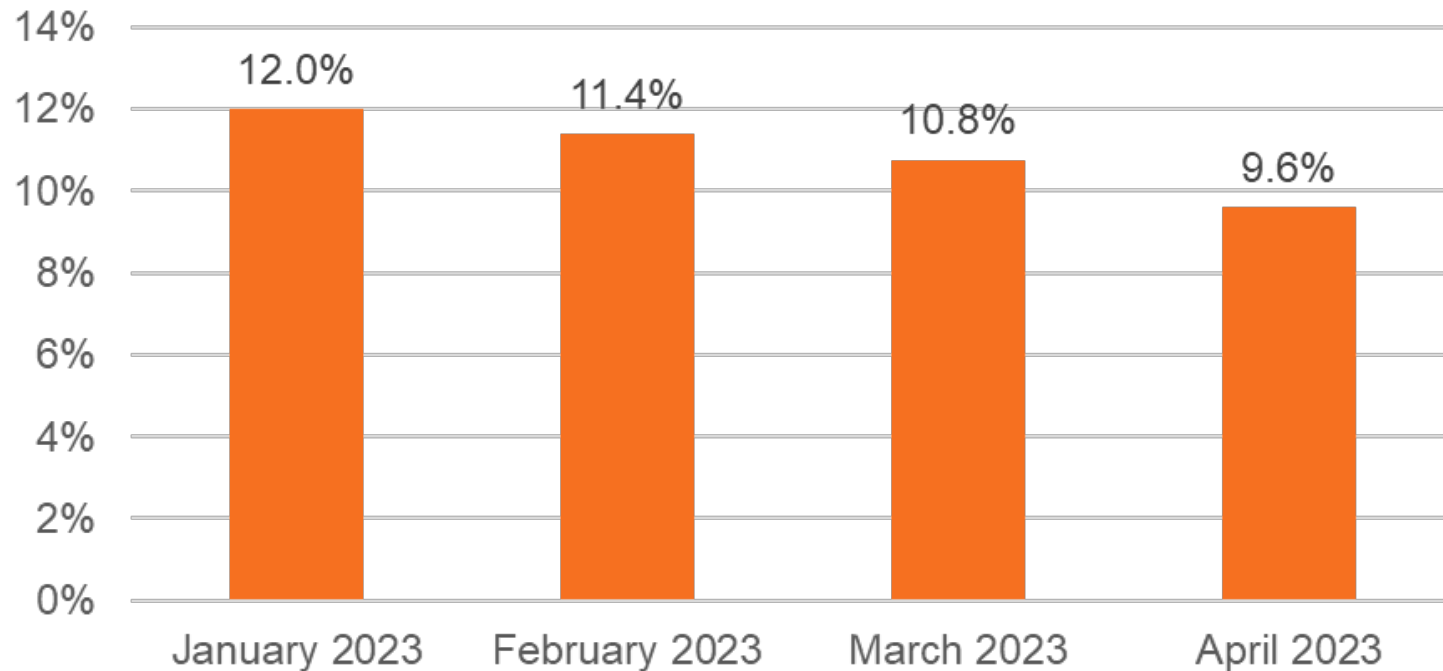
Continued Measure:

Hypertension control in the Black population, aimed at eliminating existing gap between this population and SMMC average across all populations (6600B).

New Equity-Aligned Performance Measures

San Mateo Medical Center

Disparity in Depression Screening / Follow Up,
All Patients to Black/African American Patients



All metric-qualifying patients for 2023 = 22,707
Black/AA metric-qualifying patients for 2023 = 334

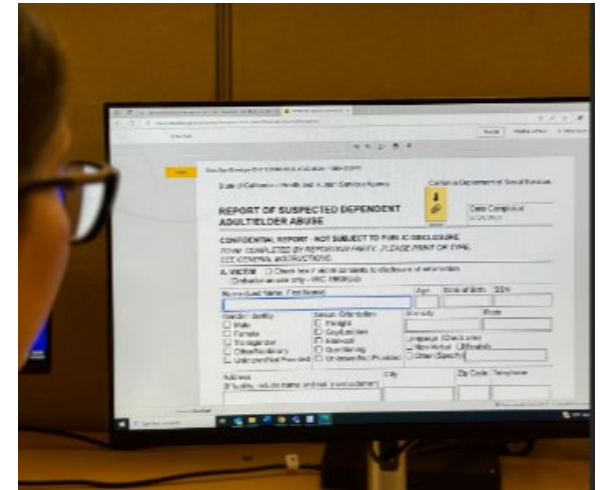
New Measure:

Depression screening in Black patients aimed at reducing the current disparity between the screening rate in this population and the overall screening rate for SMMC patients (6600B).

Efficiencies

E-Gov and other Technology

- Environmental Health Services' new records management system
- Aging and Adult Services IHSS and Adult Protective Services' new 24-hour online referral requests
- Emergency Medical Services' (EMS) online application submittal for EMT and paramedic certification and accreditation
- EMS' new smartphone app that improves patient care and provides additional support to field teams



Create A Remarkable Experience:

Family Health Services | Evidence-Based Practice

Healthy Families San Mateo

- **Vision:** All children will receive nurturing care from their family, which is essential to leading a healthy and productive life
- **Mission:** Through home visiting services, to promote child well-being and prevent the abuse and neglect of our nation's children
- **Since 2019:** 813 mothers and 515 children served through virtual or in-person visits
- **National accreditation** anticipated in September 2023

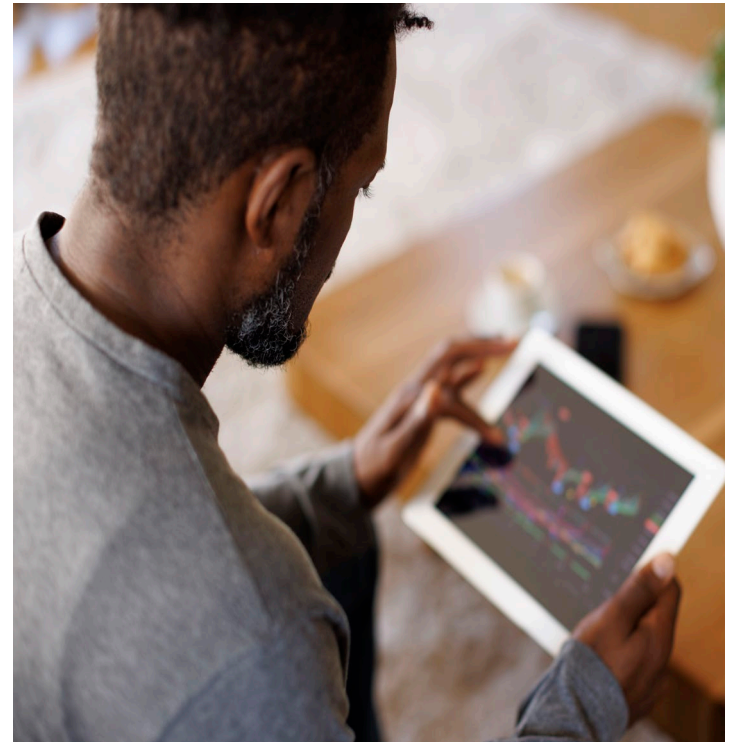


Create A Remarkable Experience

Behavioral Health & Recovery Services

BHRS addressed digital divide for clients as part of pandemic response to support technology for telehealth and other behavioral health services

- 741 devices were purchased for clients
- 290 T-Mobile tablets with data plans for clients were provided to 15 community-based organizations
- 30 tablets were purchased for residential care facility clients to address isolation



Create A Remarkable Experience

San Mateo Medical Center and Public Health



Create A Remarkable Experience

Clients and Staff of Environmental Health Services



Create A Remarkable Experience

Clients Struggling with Mental Illness can Heal in Nature



Create A Remarkable Experience

Parks Prescriptions link Families to Healing Retreat



*Photo credits: Juliana Yamada
and Amy Osborne The Chronicle*



SAN MATEO COUNTY HEALTH

All together better.



smchealth.org



@smchealth