



Cordilleras Health System Replacement Project

One Workplace - FFE

cmo.smcgov.org/pdu

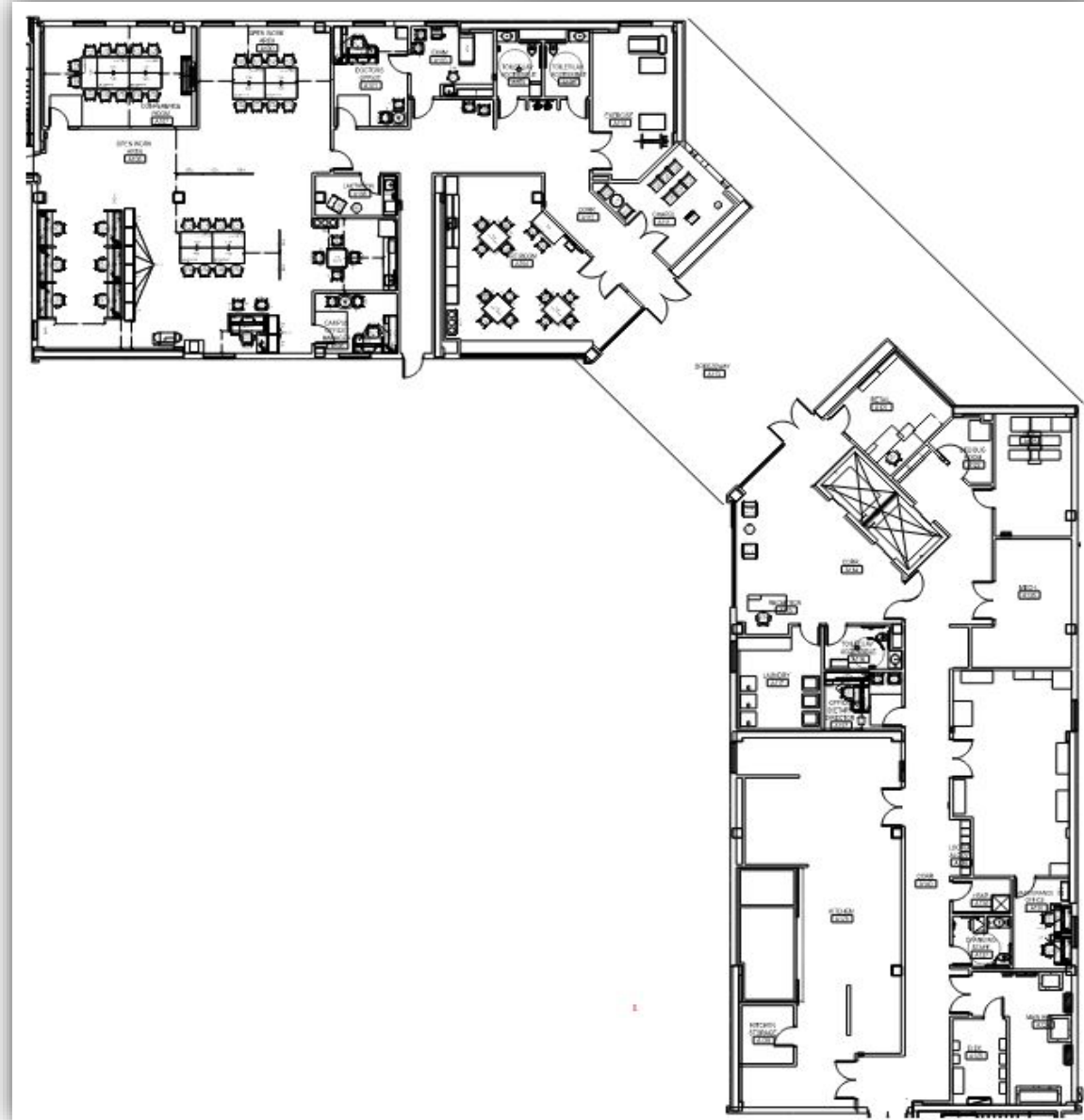


Agenda



- Co-Housing Furniture
(39,000 SF, 57 clients)
- MHRC Furniture
(4-9600 SF, 16 clients each)
- One Workplace Procurement

Cordilleras - FFE Co-Housing Level 1



Co-Housing Level 1

Conference Rooms

Campus Managers Office

Doctors Office

Art Room

Chappel

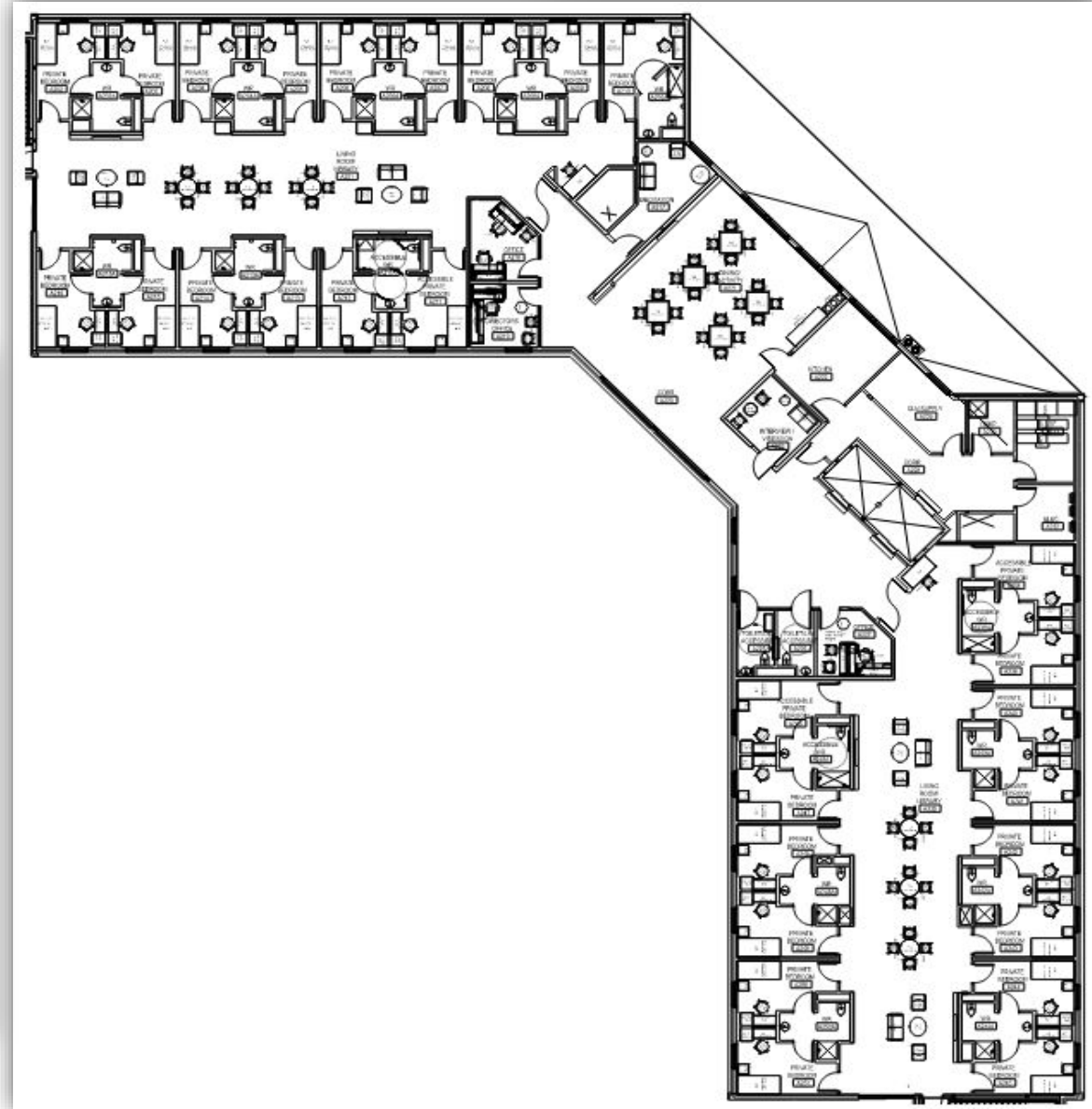
Exercise Room

Retail

Reception



Cordilleras - FFE Co-Housing Level 2- 3



Co-Housing Level 2 - 3

56 Bedrooms

Living Rooms

Offices

Meditation Room

Dining Room

Interview/Visitation



Co-Housing Level 2 - 3

56 Bedrooms

Living Rooms

Offices

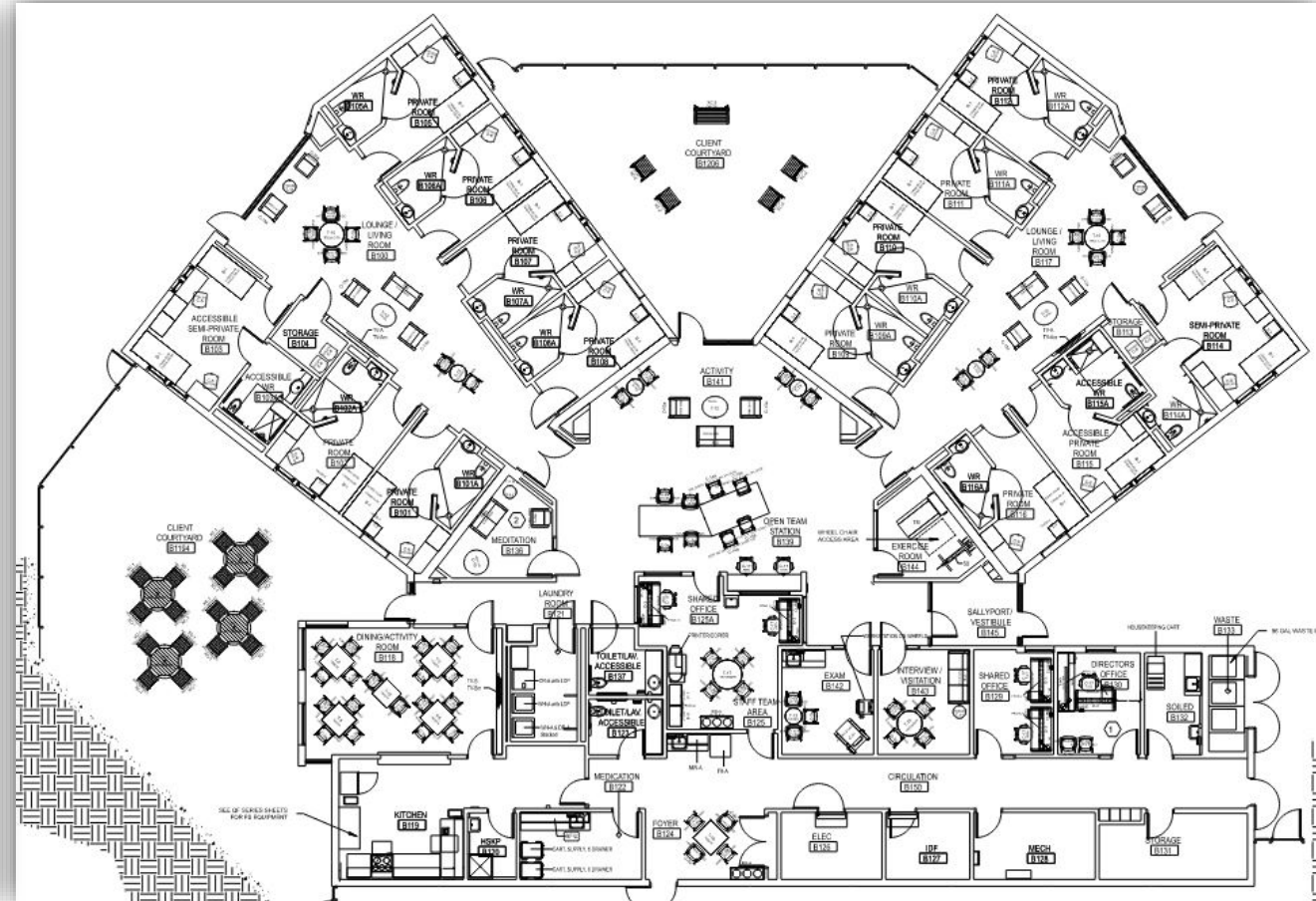
Meditation Room

Dining Room

Interview/Visitation



Cordilleras - FFE MHRCs



MHRC (4 Buildings)

16 Beds Per Building

Living/Activity Space

Offices

Meditation Room

Dining Room

Interview/Visitation



Cordilleras



- OWP was selected via competitive RFQ/RFP procurement as furniture vendor for new County projects.
- Feb /2023 OWP provides updated proposals for Cordilleras furniture, labor, project management and design services.
- 3/14/2023 PDU requests the board to adopt a resolution authorizing PDU to execute purchase orders with One Workplace to procure and install furniture for Cordilleras in an amount of \$3,300,000.00 (this price includes a 10% contingency)





- Questions?