



MIDPENINSULA REGIONAL OPEN SPACE DISTRICT

Exploring Your Open Space

Photo: Weiping Wang



Midpen Mission

Photo: Diana Gilbert

Midpen has a braided mission to acquire and preserve a regional greenbelt of open space land in perpetuity, to protect and restore the natural environment, and to provide opportunities for ecologically sensitive public enjoyment and education. On the San Mateo County Coastside, our mission expands to include acquiring and preserving agricultural land of regional significance, to preserve rural character, and to encourage viable agricultural use of lands resources.



Monte Bello Open Space Preserve



Photo: Frank Yien



About Midpen

- ❖ Public agency, created in 1972 by a grassroots voter initiative
- ❖ Elected board: seven directors
- ❖ Funded primarily through property tax
- ❖ 26 Preserves in Santa Clara, San Mateo and Santa Cruz counties
- ❖ Preserved more than 65,000 acres, 240+ miles of trails that are free and open to the public
- ❖ 180 employees, 600 volunteers





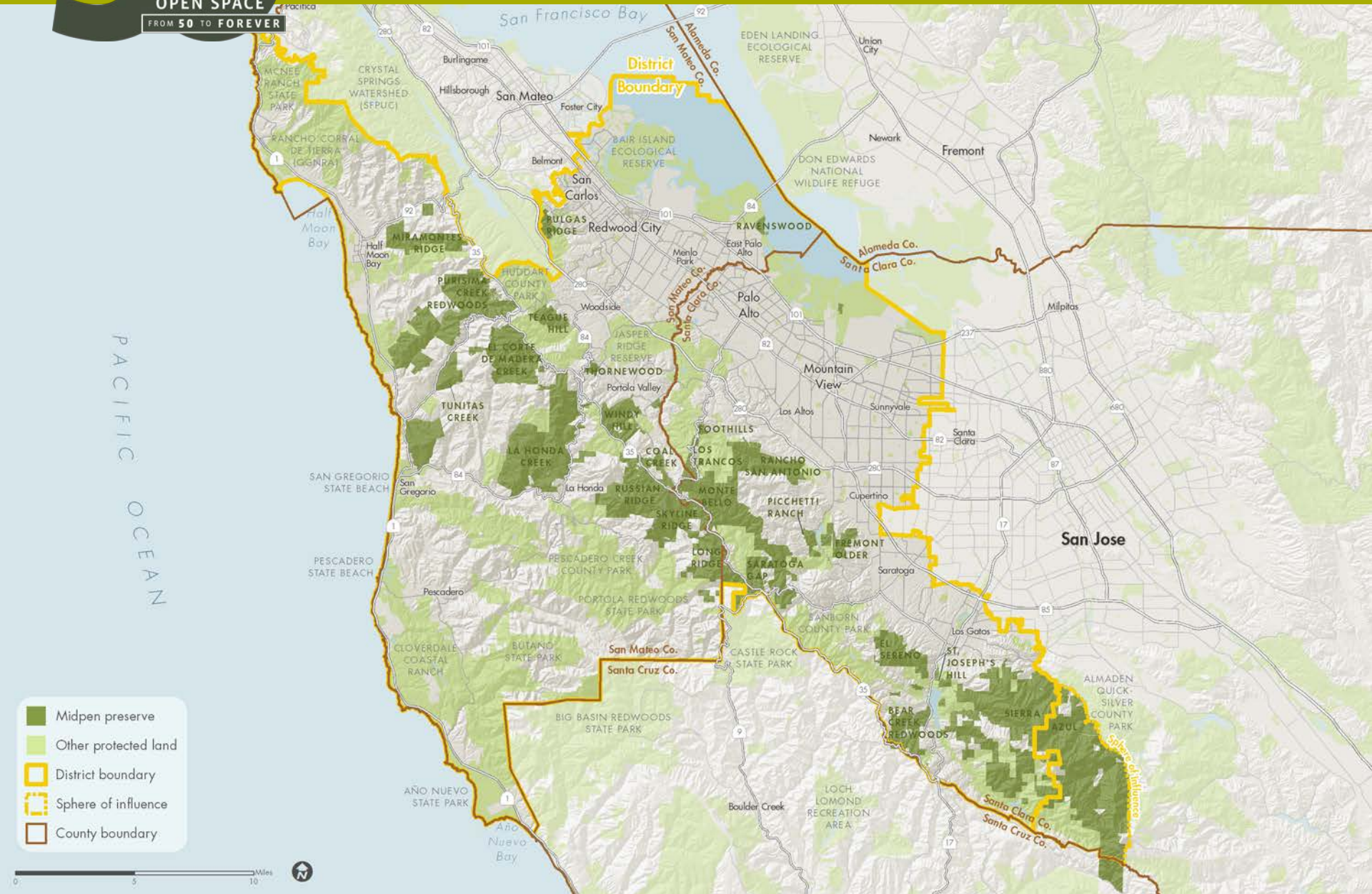
Russian Ridge Open Space Preserve



Photo: Chris Toomey



Midpen Boundaries and Open Space Preserves





Windy Hill Open Space Preserve



Photo: Eric Morhenn



Guided Activities

- 100+ free docent-led hikes offered: all-seasons, weekends and weekdays
- All ages and abilities welcome
- www.openspace.org/what-to-do/calendar





La Honda Creek Open Space Preserve



Photo: Frances Freyberg



Volunteer Activities



- ✿ Preserve Partner
- ✿ Trail Patrol Volunteer
- ✿ Nature Center Host
- ✿ Outdoor Activity Docent
- ✿ Outdoor Education Leader





Bear Creek Redwoods Open Space Preserve

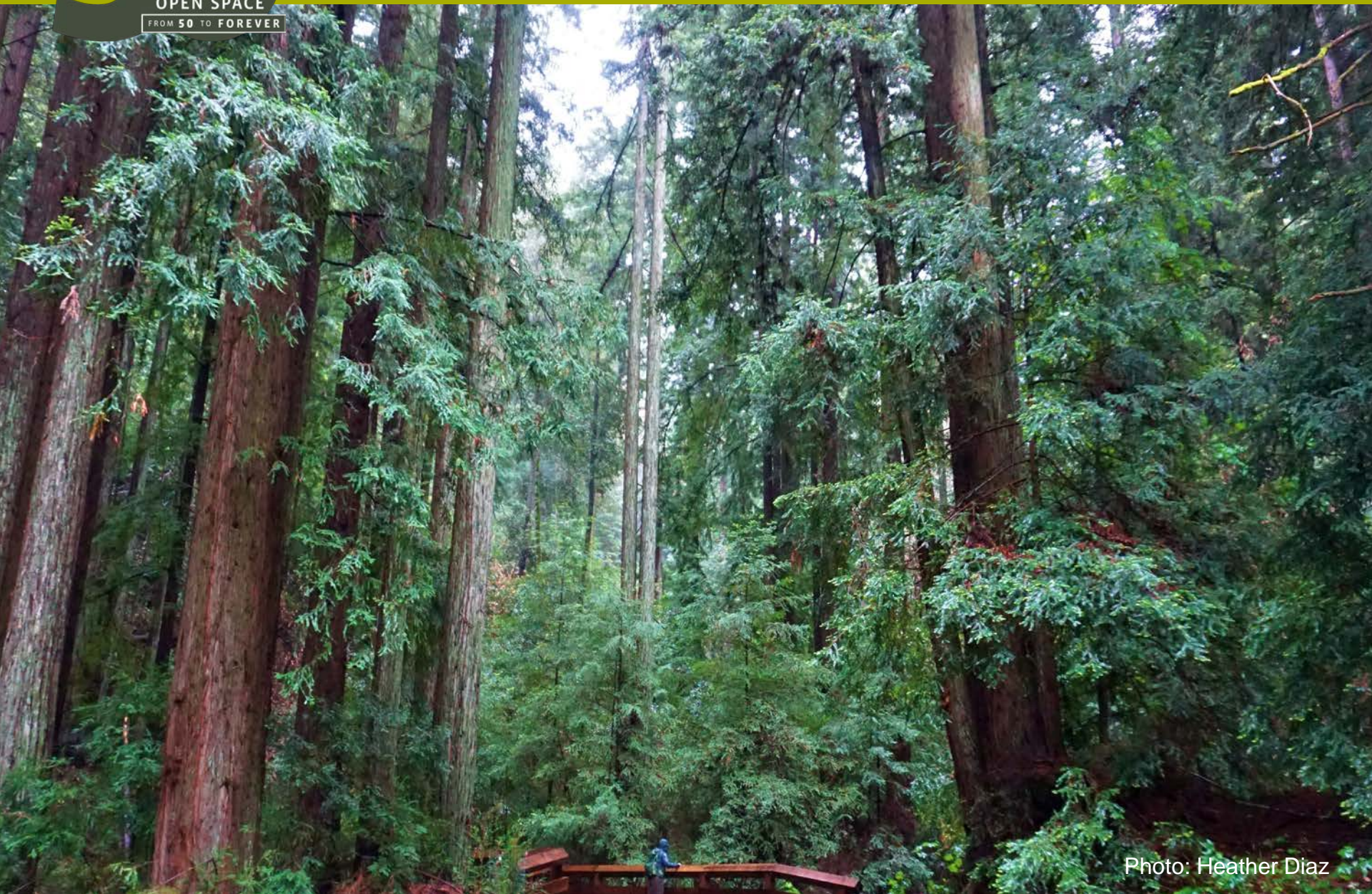


Photo: Heather Diaz



Outdoor Education Areas

Daniels Nature Center

- Skyline Ridge Preserve
- Learn about pond habitats
- Explore Alpine Pond
- Open on weekends, spring-fall



Deer Hollow Farm

- Rancho San Antonio Preserve
- Working historic farm
- Goats, chickens, pigs & more





MIDPENINSULA REGIONAL OPEN SPACE DISTRICT



openspace.org

Photo: Kristin Perry