

PC015-Skanska-COR 013-20211103
PC015 - R075975

Issued by: Scott Gurley

Ref: Cost Proposals Listed

☒ Approved
☐ Rejected

The PDU has reviewed Skanska Change Order Request 013 for the follow approved cost proposals



	Amount	
CP 057r1 Tier 4 Generator Material	\$623,186.04	

***Please note, previous CO amounts and SOV adjusted values have been corrected on the Skanska CO cover to align with the pay application amounts.

Schedule: Impact: ☐ Yes ☒ No ☐ TBD

(date)

(printed)

COMPANY CONTACT Skanska USA Building Inc. 1 California Street Suite 1400 San Francisco, CA 94111 Ph: 628-895-6301		PDU CONTRACT CONTACT: (650) 369-4722 pdu_invoices@smcgov.org 555 County Center, Floor 2 Redwood City, CA 94063	
TO: County of San Mateo, PDU c_sourdev@smcgov.org	CC: pdu_invoices@smcgov.org jorellana@smcgov.org	PDU PROJ. NO: PC015 AGREEMENT NO: R075975 COST ACCOUNT: 00 08 00	
<h2 style="margin: 0;">CHANGE ORDER 013</h2>		CHANGE AMOUNT: \$623,186.04 CHANGE IN TIME: 0 cal. days	
TITLE: Cost Proposals 057r1			
SCOPE OF WORK: This Change Order 013 includes the following previously approved CPs. 1) CP-AR-057r1: Tier 4 Generator and credit for Tier 2 Generator originally included in GMP (\$623,186.04), of which, (\$608,400.98) is the billable value of the change, on a percentage basis, and 3% of which (\$14,785.06) is allocated to Contractor's Contingency. 2) Clarifications to schedule of values regarding Contractor's Contingency confirming that CO line item values indicated are equal to the total CO value LESS the 3% Contractor's Contingency adjustment, which is added to the Contractor's Contingency line item. 3) This CO 13 includes adjustments for COs 9 - 12 in this Change Order reducing the listed CO value by the 3% contingency allocation, and reallocating those amounts to the Contractor's Contingency line item, for a net-zero impact to the adjusted contract value. 4) This CO 13 also affirms that approved CO 09 included included these adjustments for COs 06-08 which were inadvertently listed as changes to the "Current Value" column for Contractor's Contingency & COs 06-08, as compared to the Adjusted Values per approved CO 08. 5) Contractor & PDU agree that in all cases, the "Adjusted Value" as confirmed the latest approved CO for each individual change order and for Contractor's Contingency, shall be applied to the Contractor's payment application in the exact value as shown on the approved CO schedule of values, and that said changes should be applied to the payment application in the next available billing cycle, subject to the PDU Project Manager's written authorization.			
SCHEDULE OF VALUES	CURRENT VALUE	CHANGE AMOUNT	ADJUSTED VALUE
PRE-CONSTRUCTION SERVICES	\$862,062.00	\$0.00	\$862,062.00
CMR FEE	\$2,471,990.03	\$0.00	\$2,471,990.03
CMR GENERAL CONDITIONS	\$5,950,000.00	\$0.00	\$5,950,000.00
CMR GENERAL REQUIREMENTS (GR-1)	\$3,784,943.58	\$0.00	\$3,784,943.58
CMR GENERAL REQUIREMENTS (GR-2)	\$0.00	\$0.00	\$0.00
DIRECT CONSTRUCTION COSTS (TRADES)	\$80,129,970.44	\$0.00	\$80,129,970.44
CONTRACTOR'S CONTINGENCY	\$2,523,538.50	\$27,191.86	\$2,550,730.36
BONDS, INSURANCE, AND TAXES	\$4,469,105.99	\$0.00	\$4,469,105.99
ALLOWANCES	\$4,154,554.84	\$0.00	\$4,154,554.84
CO #06	\$29,389.04		\$29,389.04
CO #07	\$19,255.85		\$19,255.85
CO #08	\$165,030.57		\$165,030.57
CO #09	\$41,812.39	(\$1,001.18)	\$40,811.21
CO #10	\$147,224.66	(\$3,492.91)	\$143,731.75
CO #11	\$231,503.39	(\$5,534.76)	\$225,968.63
CO #12	\$100,230.04	(\$2,377.95)	\$97,852.09
CO #13		\$608,400.98	\$608,400.98
CONTRACT VALUE SUMMARY		CONTRACT TIME SUMMARY	
ORIGINAL CONTRACT VALUE	\$11,383,105.00	ORIGINAL COMPLETION:	9/21/2019
PRIOR APPROVED CHANGES	\$93,697,506.32	PRIOR APPROVED DAYS:	535
THIS CHANGE AMOUNT	\$623,186.04	THIS CHANGE APPROVED DAYS:	0
ADJUSTED CONTRACT VALUE	\$105,703,797.36	ADJUSTED COMPLETION DATE:	10/23/2023
<p>I hereby certify, to the best of my knowledge, that (1) the information provided in this CHANGE ORDER is true and accurate, and in conformance with the terms of the Contract, and (2) the reported costs and time requested herein reflect the actual cost and time impacts related to the scope of work.</p> <p>By signing below, I understand and agree that this CHANGE ORDER constitutes and full and final settlement for all direct, indirect, and related costs and impacts associated with this issue. Unless specifically modified in this change order approval, all terms and conditions of the contract remain in force, supersede any terms and conditions listed in Contractor's proposal, and under no circumstances are items listed in Contractor's proposal considered a part of this approved CHANGE ORDER unless specifically included in the County of San Mateo Project Development Unit standard CHANGE ORDER forms.</p>			
Scott Gurley APPROVED BY PDU Project Manager	03-Nov-2021 12:39 PDT Date	 APPROVED BY Skanska USA Building Inc.	10/28/2021 Date
Adam Ely APPROVED BY PDU Executive 1	03-Nov-2021 17:20 PDT Date	Sam Lin APPROVED BY PDU Executive 2	03-Nov-2021 14:36 PDT Date

COUNTY OF SAN MATEO

By:
President, Board of Supervisors, San Mateo County

Resolution No.

Date:

ATTEST:

By:
Clerk of Said Board



Project Development Unit
555 County Center Floor 2
Redwood City, CA 94063
www.smcgov.org

PC015-Skanska Cost Proposal 057.1

Tier 4 Generator

PC015 - R075975

Owner:

County Manager's Office
555 County Center Floor 2
Redwood City, CA 94063

Date: October 19, 2021**Issued by:** Scott Gurley**SCOPE of WORK:** PC015 -Skanska –Tier 4 Generator per BAAQMD**Ref:****DISPOSITION:**

- ☒ Approved
☐ Revise and Resubmit
☐ Returned
☐ Rejected

The PDU has reviewed the Skanska Cost Proposal 057.1 for upgraded tier 4 generator material per BAAQMD and approves full and final amount of **\$623,186.04** for all material as described herein. The magnitude of this cost proposal will require a county BOS approval prior to executing payment.

ADJUSTMENT:

Cost: ☐ TBD ☒ Add ☐ Deduct ☐ NA

Schedule: Impact: ☐ Yes ☐ No ☒ TBD

Owner/County:

DocuSigned by:

D149DF838EF04D7...
(signature)

19-Oct-2021 | 08:24 PDT
(date)

Scott Gurley

(printed)



October 13, 2021

Via Email Attachment

San Mateo County Project Development Unit
555 County Center, Floor 2
Redwood City, CA 94063

Attn: Scott Gurley

Re: Cordilleras Health System Replacement Project
Phase 2 Construction CP-AR 057R1

Dear Scott,

In follow up to our Notice of Change submitted on March 16, 2021, please find enclosed our cost proposal regarding the final agreed scope of work for the Tier 4 emergency generator. To comply with the Bay Area Air Quality Management District emission standards requirements the emergency generator had to change from a Tier 2 to Tier 4 level. This proposal includes the furnish only of the Tier 4 emergency generator and a credit for the originally specified generator included in the GMP. There are 11 transfer switches included in the proposal.

This proposal excludes all additional work and potential time impacts related to the generator change and will be submitted as a separate cost proposal once Bulletin #13 has been issued and assessed.

In accordance with 01 2600, Contract Modification Procedures, we respectfully request the contract be increased by **\$623,186.04**. Time impact is excluded from this CP while potential impact is analyzed and able to be quantified. Should time impact be determined, Skanska will submit an associated Time Impact Analysis as a separate CP.

Sincerely,

A handwritten signature in black ink that reads "Caroline Fong".

Caroline Fong
Senior Project Engineer

cc. Adam Ely, San Mateo PDU
Sam Lin, San Mateo PDU
Raki Chaitt, Skanska USA Building Inc.
James Spadaccia, Skanska USA Building Inc.
Lindsay Corotis, Skanska USA Building Inc.
Brian Stevenson, Skanska USA Building Inc.

San Mateo County – Project Development Unit Cordilleras Health System Replacement Project

COST PROPOSAL (CP)

CORDILLERAS HEALTH SYSTEM REPLACEMENT PROJECT

CP Number: CP-AR-057R1
Contract Number: 75975
In Response To: CCD 007 & RFI 041– Tier 4 Emergency Generator – Material Only

Date: 10/13/2021

To: COUNTY OF SAN MATEO

Scott Gurley

Sam Lin

Attention: Mr. Scott Gurley
 555 County Center Floor 2
 Redwood City, CA 94603
 Telephone (480) 390-8918




Subject Ref. No: _____

(for Project Manager use only)



From: Skanska USA Building Inc. 19-Oct-2021 | 08:24 PDT 26-Oct-2021 | 13:17 PDT


Caroline Fong
 1 California St STE 1400
 San Francisco, CA 94111

Adam Ely

26-Oct-2021 | 14:51 P

This Cost Proposal is in response to the above-referenced: CCD 007 & RFI 041– Tier 4 Emergency Generator – Material Only

Brief description of change(s): To comply with the Bay Area Air Quality Management District emission standards requirements the emergency generator had to change from a Tier 2 to Tier 4 level. This is for material only of the Tier 4 emergency generator. This proposal excludes all additional work and potential time impacts associated with CCD 007 & RFI 041 that will be submitted separately.

ITEM DESCRIPTION	CMR	Collins	SUB 2	SUB 3	SUB 4	TOTAL
Direct Labor Cost						\$ -
Direct Material Cost		\$ 492,835.49				\$ 492,835.49
Direct Equipment Cost						\$ -
Direct Cost of Extra Work	\$ -	\$ 492,835.49	\$ -	\$ -	\$ -	\$ 492,835.49
CMR Self-Performing (Not to exceed 13.75% of Direct Cost of Extra Work)	\$ -					\$ -
Subcontractor's Overhead & Profit on Labor, Materials & Equipment (Not to exceed 13.75% of Direct Cost of Extra Work)		\$ 67,764.88	\$ -	\$ -	\$ -	\$ 67,764.88
SDI (Not to exceed 1.25% of Direct Cost of Extra work)	\$ 6,160.44					\$ 6,160.44
CMR Fee (Not to exceed 2.75% of Direct Cost of Extra Work)	\$ 13,552.98					\$ 13,552.98
BIT (Not to exceed 4.84% of Direct Cost of Extra Work + Subcontractor OH&P + SDI + Fee)	\$ 28,087.19					\$ 28,087.19
Contingency (3% of Direct Cost of Extra Work)	\$ 14,785.06					\$ 14,785.06
GRAND TOTAL	\$ 62,585.67	\$ 560,600.37	\$ -	\$ -	\$ -	\$ 623,186.04
REQUESTED CHANGE IN CONTRACT TIME (DAYS)						TBD
By CMR: Caroline Fong Signature:  Date: 10/13/2021						

Change Order Calculations

Contract: Cordilleras Health System Replacement Project
 Authorization Request: CP-AR-057R1
 Description: CCD 007 & RFI 041– Tier 4 Emergency Generator –
 Material Only

Element	Rate	Cost
Direct Cost of Work		\$ 492,835.49
Subcontractor OH&P	13.75%	\$ 67,764.88
SDI	1.25%	\$ 6,160.44
Subtotal Trade Contractor Costs		\$ 566,760.81
Fee	2.75%	\$ 13,552.98
Subtotal		\$ 580,313.79
BIT	4.84%	\$ 28,087.19
Subtotal		\$ 608,400.98
Contingency (3% of TCC)	3.00%	\$ 14,785.06
Subtotal		\$ 623,186.04
Total Not to Exceed		\$ 623,186.04



Proposed Change Order #001

October 13, 2021

Skanska USA Building, Inc
One California Street
Suite 1400
San Francisco, CA. 94111

Project name: Cordilleras Health System
Contract #: 4318012-000.017

CECI Job #: 219001

Attn: Raki Chaith,

Subject: Emergency Generator Bid vs Tier 4 Change

Collins Electrical Company, Inc. (CECI) has reviewed the above referenced change and we have determined our work is impacted as follows:

Net Amount of this Proposed Change:	\$560,600.37
Schedule Impact:	0 Days
Proceeding with work:	No
Response Due date:	11/01/2021

We submit the following pricing to complete work per the above reference with the following scope included:

1. We acknowledge the following Bid Documents:

- a. Skanska RFI 41 (CECI 003) Emergency Generator Emission Tier Change dated 3.1.2021.

2. INCLUSIONS

- a. Comparison of the emergency generator bid day quote to the required Tier 4.

3. CLARIFICATIONS

- a. All work is to be done during normal working hours. Any off-hour work is not included in the proposed amount.
- b. Generator height will double in height to approximately 23'-0" in height.
- c. The generator Concrete Pad will need to be thickened to accommodate the added weight of the emissions equipment.
- d. This proposal only lists the dollar values of the bid day generator pricing verses today's Tier 4 pricing.

4. EXCLUSIONS

- a. Overtime or shift work (Proposal is based on standard 40-hour work week).
- b. Permit fees, or inspection costs.
- c. Bonding costs.
- d. Working with or handling of any hazardous materials.
- e. Formed Pad Concrete.
- f. Installation labor to set the generator, connections to the emission control equipment and auxiliary equipment. labor

Note: This Proposed Change Order Pricing is good for 30 days, without price adjustment.

Respectfully Submitted,

Rick Henry

Rick Henry
Branch Manager

CHANGE ORDER RECAP

COLLINS ELECTRICAL CO., INC.

CORDILLERAS MENTAL HEALTH SYSTEM PROJECT**COLLINS JOB #:****219001****COR # :****001****CONTRACT NUMBER:****4318012-000.017****DATE :****8/30/2021****CHANGE DESCRIPTION:**

Emergency Generator Emission Teir Change

REF #**Bid vs Current****SOURCE DOCUMENTS:**

Skanska RFI 41 response, Dated March 1,2021 (CEC RFI 003)

1- LABOR**Direct Labor**

General Foreman:	Straight Time	0.00 MH @	\$ 157.65 =	\$	-
Foreman:	Straight Time	0.00 MH @	\$ 145.75 =	\$	-
Journeyman:	Straight Time	0.00 MH @	\$ 131.49 =	\$	-
General Foreman:	Overtime @ 1.5	0.00 MH @	\$ 216.65 =	\$	-
Foreman (Working):	Overtime @ 1.5	0.00 MH @	\$ 202.45 =	\$	-
Journeyman:	Overtime @ 1.5	0.00 MH @	\$ 177.76 =	\$	-
General Foreman:	Overtime @ 2.0	0.00 MH @	\$ 275.65 =	\$	-
Foreman (Working):	Overtime @ 2.0	0.00 MH @	\$ 256.68 =	\$	-
Journeyman:	Overtime @ 2.0	0.00 MH @	\$ 198.92 =	\$	-
Total Labor :		0.00 MH	#DIV/0!	\$	-

2- MATERIALS

Direct Material :	Bay City Electric		\$	806,708.00
Quoted Materials:	Collicot		\$	(355,600.00)
Small Tools and Consumables:		3% of Labor Cost	\$	-
Freight :		3% of Material Cost	\$	-
Total Materials :			\$	451,108.00

3- SUBCONTRACTOR

Subcontractor Quotes:	\$	-
Subcontractor Quotes:	\$	-
Subcontractor Quotes:	\$	-
Subcontractor Quotes:	\$	-
Total Subcontractors :	\$	-

4- DIRECT JOB EXPENSE

Direct J.E. :					
Material Handling		0% of Material Cost	\$	-	
Clean up, Rubbish Removal, Recycling		0% of Material Cost	\$	-	
PM Time	4.00	MH @ \$ 135.00	\$	-	
CAD Coordinaton	2.00	MH @ \$ 115.00	\$	-	
Rental Cost	Scissor Lift	0.00	\$ 800.00	\$	-
Safety/Superintendent		0% Labor Dollars	157.65	\$	-
Total Direct Job Expense :			\$	-	

RECAPITULATION

1 Labor :	\$	-
Markup for Labor:	13.75%	\$ -
2 Materials :	\$	451,108.00
Materials Tax:	9.25%	\$ 41,727.49
Markup for Materials Only:	13.75%	\$ 67,764.88
3 Subcontractor :	\$	-
Markup for Subcontractor:	13.75%	\$ -
4 Direct Job Expense :	\$	-
Markup for Direct Job Expense	13.75%	\$ -
TOTAL CHANGE ORDER REQUEST :	\$	560,600.37

October 7, 2021



KOHLER®
IN POWER. SINCE 1920.

KOHLER GENERATOR SALES - SERVICE - PARTS - RENTALS

To learn more, visit our website at www.BCEW.com

REFERENCE: Cordilleras Health System - Campus Replacement
EMERGENCY GENERATOR SYSTEM
BCEW # 125216-updated 9-7-2021

Bay City Electric Works is pleased to offer the following Kohler generator system for your use on the referenced project. This proposal includes the equipment and testing shown on your partial single line E0501 and specification section 263213, 263600. The following clarifications, technical exceptions and/or exclusions are noted:

- Generator sized per back up emergency section legally required loads
- Suppling a standard kohler Generator radiator cooling package
- 11 transfer Switches supplied
- Spare parts included
- 3.2 F. initial fill by others
- This is not quoted as a OSHPD project
- Change to custom enclosure to support tier 4 emissions.

Major system components include:

One (1) UL2200 Listed Kohler model 1250REOZMD diesel powered generator set, rated for standby duty at 1250 KW, 480 volt, 3 phase, 4 wire, 60 Hertz, 1800 RPM, outdoor in weatherproof sound attenuated enclosure with 6160 gallon subbase diesel fuel tank rated for 60 hours at full load.

**1250kw Tier, Qty 10 Transfer Switches, Tier 4 with custom enclosure,
2000amp Connection Cabnet price is**

.....\$ 780,166.00 (Tax Not Included)

Adder:

800amp ATS for domestic water pump.....\$ 9,575.00

To change skirt on roof from 3 feet to 7 feet price is...\$ 16,967.00

13625 Danielson Street, Poway, CA 92064 (HQ)
8647 Helms Ave, Unit #100, Rancho Cucamonga, CA 91730
322 Lindbergh Avenue, Livermore, CA 94551
Phone – 866.938.8200 Fax – 619.938.8202

www.BCEW.com

REFERENCE:

BCEW # 125216-updated 9-7-2021

2 of 8

New BAAQMD Tier 4 Compliant Rules.

The following clarifications, technical exceptions and/or exclusions are noted:

- This is a Tier 4 Emissions Abatement Device Quote
- Installation erected on site (with Bay City Support)
- Urea/DEF Diesel Emissions Fluid is provided by others
- 1250REOZMD generator, enclosure and tank
- Will need Crane to erect tier 4 components on Generator

One (1) 1250kw Emissions Reduction Device to meet Tier 4 Compliant

This will come equipped with consist of a Diesel Particulate Filter, Selective Catalyst Reduction, Pumps, Motors, Seismic Certified Framing, and Tank

Note: Tank must be placed in a location near the system

Jobsite inspection, initial startup, and initiation of warranty, by a Bay City Electric Works field technician during normal working hours Monday through Friday 7:00 a.m. to 4:00 p.m. Testing will utilize building load unless the specification states otherwise. Fuel for testing is excluded. Any jobsite orientation and training of operating personnel to be done at the time of startup.

GM1250REOZMD	1250REOZMD Generator System
1250REOZMD-CP1	1250REOZMD Generator Set
Includes the following:	
GM80624-GA9	1250REOZMD, 24V, 60Hz, Tier II
279989	Nameplate Rating, Standby 130C
GM19874-KA1	UL2200 Listing
GM63599-KA125	Seismic Certification
GM71785-KA1	Seismic Anchor Plates
333708	Voltage, 60Hz, 277/480V, 3Ph, 4W, 0.8PF
GM79361-MA2-BLK	Alternator & Mtg, 7M4048, 4-BUS
GM51417-MA1	Cooling, Unit Mounted Radiator 40C
GM80626-MA5	Skid & Mtg, 742 Frame
GM105455-MA1	Air Intake, Std. Duty
GM75797-MA15-BLK	Ctrl & Mtg, DEC550 380-480V 3000A
GM79363-MA1-KCB	Control & Harness, DEC550
GM77563-KA1	Controller Connection
GM72645-TPG	1250REOZMD SL1 Int Sil Package
GM72989-TAG	Sound Encl L1-Int Sil w/6160 Gal Tank

13625 Danielson Street, Poway, CA 92064 (HQ)
 8647 Helms Ave, Unit #100, Rancho Cucamonga, CA 91730
 322 Lindbergh Avenue, Livermore, CA 94551
 Phone – 866.938.8200 Fax – 619.938.8202

www.BCEW.com

REFERENCE:**BCEW # 125216-updated 9-7-2021****3 of 8**

GM73205-TAG	Aluminum Construction
GM77857-TAG	5 Gal. Spill Containment
GM77861-TAG	Vent, 12' Above Grade (w/Spill Contain.)
GM87031-TAG	Seismic Bracing, SL1 INT
GM71450-AA1	Software, Fuel Level & Fuel in Basin
GM64397-KA1	Blk. Htr. 9000W, 240V, 1Ph., (Qty. 2)
GM95038-KA1	Battery Charger 24V-10A
GM77563-KA2	Run Relay, 24V
GM77563-KA5	Dry Contcts, 10SPDT, 10A
GM77563-KA4	Failure Relay Single Fault
GM80939-CA1	Breaker 1 Right Components
GM78501-KA1-KCB	Panel, J-Box Closure
GM78500-KA16-KCB	Panel, J-Box Barrier
GM78516-KA1	MTG, LCB NW-Frame
GM78509-KA2	Neutral, GFI 2000A
GM107946-KA1	LCB, 2000A, NWF, LSIG, 100%
GM80939-CA5	Breaker 1 Left Components
GM78501-KA1-KCB	Panel, J-Box Closure
GM78500-KA10-KCB	Panel, J-Box Barrier
GM80939-CA9	Breaker Accessories (All Breakers)
GM78505-KA1	Neutral, 4-Bus
GM78502-KA3	Bus, ABC 4-Bus NW Breaker
GM82664-KA1	Decal, Neutral (Bonded)
GM17217-KA1	Flexible Fuel Lines
GM52249-KA1	Crankcase Emissions Canister
GM28621-KA42	Oil in Genset, 190 Qts.
GM28625-KA37	Coolant in Genset, 85 Gal.
GM60033	Warranty, 2 Year Basic
299891	Power Factor Test, 0.8, 3Ph Only

Miscellaneous

Part Number	Description
GM84343-KP1	Flexible Exhaust Connector
GM34405-KP1	Battery, 12V, 1150CCA, Wet
GM69535-KP2	Battery Rack & Cables, Seismic
GM84955-KP1	Isolator, IBC Seismic Spring
GM91356-KP1	RSA III, Annunciator only

Qty - 1

Generator temp connection cabinet

Service Voltage / Hz : 277V-480V/50-60Hz

Input Panel, Type 3R(F), 277V480V, 2000A, 3P+N+G, 600V

MAX, CC:

BRN, ORG, YEL, WHT, GRN

13625 Danielson Street, Poway, CA 92064 (HQ)
8647 Helms Ave, Unit #100, Rancho Cucamonga, CA 91730
322 Lindbergh Avenue, Livermore, CA 94551
Phone – 866.938.8200 Fax – 619.938.8202

www.BCEW.com

REFERENCE:

BCEW # 125216-updated 9-7-2021

4 of 8

No. of Switched Poles : 3 Neutral Configuration : None

Short Circuit Rating: : 100K RMS Symmetrical

Amps,600VAC Max.

Size : 6, #2 AWG to 600MCM

Enclosure : 3R(F)-UL Type 3R Enclosure

ATS AMPS: 0070 QTY: 4

Service Voltage / Hz : 208V/60Hz Optional Accessories :

300 Series, Automatic Open

Transition Transfer Switch

No. of Switched Poles : 3 Neutral Configuration : Solid [A]

Size : 1, #14 to 4/0 AWG

Frame = D, Switch Rating = 0070, Series = 300

Enclosure : 1(C)-UL Type 1 Enclosure Service : Three Phase, 4-wire

AMPS: 0800 QTY: 1

Service Voltage / Hz : 480V/60Hz Optional Accessories :

Transition Transfer Switch

No. of Switched Poles : 3 Neutral Configuration : Solid [A]

Size : 4, 1/0 AWG to 600 MCM

Frame = H, Switch Rating = 0800, Series = 300

Enclosure : 1(C)-UL Type 1 Enclosure Service : Three Phase, 4-wire

AMPS: 0800 QTY: 5

Service Voltage / Hz : 480V/60Hz Optional Accessories :

Bypass Isolation : Not Applicable Product Description : 300 Series, Automatic Delayed

Transition Transfer Switch

No. of Switched Poles : 3 Neutral Configuration : Solid [A]

Size : 4, 1/0 AWG to 600 MCM

Frame = H, Switch Rating = 0800, Series = 300

Enclosure : 1(C)-UL Type 1 Enclosure Service : Three Phase, 4-wire

AMPS: 1200 QTY: 1

Service Voltage / Hz : 480V/60Hz Optional Accessories :

Bypass Isolation : Not Applicable Product Description : 300 Series, Automatic Delayed

Transition Transfer Switch

No. of Switched Poles : 3 Neutral Configuration : Solid [A]

Size : 4, 1/0 AWG to 600 MCM

Frame = H, Switch Rating = 1200, Series = 300

Enclosure : 1(C)-UL Type 1 Enclosure Service : Three Phase, 4-wire

**5350, Remote Annunciator, 8 ATS,
Ethernet**

This proposal includes one onsite courtesy maintenance inspection for the first year of operation.

REFERENCE:

BCEW # 125216-updated 9-7-2021

5 of 8

Kohler limited generator warranty, effective from date of startup, for:

3 years or 1000 hours* (whichever occurs first) as published in Kohler Brochure

*(Standard Kohler KD engine warranty for standby applications).

System Price: FOB Factory with freight allowed to your jobsite. Offloading and placement of equipment is excluded. All deliveries are Monday through Friday 7:00 a.m. to 4:00 p.m. Deliveries outside the normal business hours will be invoiced as necessary.

AQMD/APCD Permit is not included. To be provided by others. Contact ProActive Consulting Group at 714-893-7900 for Permit application processing information and pricing.

Quotation Notes:

1. Applicable taxes have not been included.
2. 3% fee will be added to any payments made by credit card.
3. Air quality permit fees and compliance are excluded. Local air quality authorities may require a health risk study or environmental quality assessment. The cost for a health risk study is excluded.
4. Any additional equipment required as a result of the Air Quality Management District (AQMD or APCD) permit application will be quoted separately. Air quality requirements are ever changing and vary based on jobsite location. BCEW is quoting the latest Tier compliant generators to meet State and Federal regulations unless otherwise noted. It is the customer or end users responsibility to obtain all permits related to the installation and operation of the equipment quoted herein. All permits must be obtained prior to installation of the equipment.
5. Generators installed on or after January 1st, 2013 in SCAQMD's jurisdiction will require the installation of a Particulate Matter Filter if they are within 50 meters of a sensitive receptor and over 175bhp. If the generator is within 50 meters of a sensitive receptor and there is not a price for a PM Filter on this quote please contact your salesperson immediately. A sensitive receptor is defined as, "any residence including private homes, condominiums, apartments, and living quarters, schools as defined in (5), preschools, daycare centers, and health facilities such as hospitals or retirement and nursing homes. A sensitive receptor includes long term care hospitals, hospices, prisons, and dormitories or similar live-in housing."
6. "Engines located on or near school grounds: New Stationary emergency standby diesel-fueled engines (>50 bhp) located on school grounds or 100m or less from a school which exists at the date the application for Permit to Construct or Permit to Operate is deemed complete, whichever is earlier shall emit diesel PM at a rate less than or equal to 0.01 g/bhp-hr" which means that a PM Filter will be necessary.

13625 Danielson Street, Poway, CA 92064 (HQ)
8647 Helms Ave, Unit #100, Rancho Cucamonga, CA 91730
322 Lindbergh Avenue, Livermore, CA 94551
Phone – 866.938.8200 Fax – 619.938.8202

www.BCEW.com

REFERENCE:

BCEW # 125216-updated 9-7-2021

6 of 8

If the generator is within 100 meters of a Kindergarden-12th grade school and there is not a price for a PM Filter on this quote please contact your salesperson immediately.

7. Some local AHJ's will require field inspections, additional testing, interconnection with a Fire Alarm system or BMS, or verifying functionality on certain components/alarms/monitoring. We are bidding to the plans and specifications provided and cannot cover any and all potential testing that may be requested by AHJ's. We do our best to be an expert on all local requirements but we have a huge territory and requirements are ever changing. We are bidding to a design spec for a project awarded based on pricing. It is the responsibility of the Consulting/Specifying Engineer to provide the required information to bid the project properly. Typically the testing/inspection does not require attendance by a BCEW technician but in certain instances it does. Please contact us with the specific requirements in writing that apply to your project (from your approved fire permit, County HazMat permit or your inspection corrections) once you have them and our Service Department can quote it accordingly.
8. Quotation will be held firm for 30 days. This quote may be modified and/or rescinded by BCEW at its sole discretion unless the quote is accepted before the expiration date.
9. On-site installation work is excluded.
10. Fuel, initial fuel fill and fuel for testing is excluded.
11. No special lugs included in our quotes unless specifically identified on our proposal. You will receive the standard lugs for the provided breakers.
12. Vapor Gas Fuel System includes fuel mixer, electronic secondary gas regulator, gas solenoid valve, and flexible fuel line between the engine and the skid-mounted fuel system components. External fuel supply components are not included.

Terms and Conditions:

1. Terms of payment are net 30 days from factory shipment, upon approval of credit department.
2. Materials will be invoiced date of shipment from factory.
3. Acceptance of purchase order is based on materials quoted.
4. 1.5% per month on unpaid balance will be assessed if not paid within terms.
5. Terms for retention and liquidated damages will not be accepted.
6. The following charges may be assessed for cancellation of any order:
 - a. 10% of total order price if cancelled after we have provided submittals but prior to release for manufacture.
 - b. 25% of total order price if cancelled after release for manufacture, or if the equipment is already on order with the factory (Kohler paralleling switchgear is on order as soon as Submittals are requested).
 - c. 50% of total order price if cancelled less than 60 days prior to the scheduled shipment date.

13625 Danielson Street, Poway, CA 92064 (HQ)
 8647 Helms Ave, Unit #100, Rancho Cucamonga, CA 91730
 322 Lindbergh Avenue, Livermore, CA 94551
 Phone – 866.938.8200 Fax – 619.938.8202
www.BCEW.com

REFERENCE:

BCEW # 125216-updated 9-7-2021

7 of 8

- d. 100% of total order price if cancelled after the equipment has shipped from the manufacturing plant.

Lead Times:

1. Most submittals can typically be provided within 10 business days from receipt of your written hold for Submittal approval (HFSA) Purchase Order. Custom drawings take 15-20 business days minimum. Paralleling Switchgear Submittals are a minimum of 6-8 weeks.
2. Current factory lead-time for the generator is 55 weeks from written release for production.
3. Current factory lead-time for the Automatic Transfer Switch is 26 weeks from written release for production.

We appreciate this opportunity to offer our equipment for your consideration. Please call if you have any questions or if I can help in any way. Bay City Electric Works wants to be your Generator System Supplier.

Best Regards,

Damian Oxendine
Industrial Sales Executive
(925) 724-9060 cell
doxendine@bcew.com

The authorized purchaser identified below accepts this proposal and agrees, upon acceptance of this contract by Bay City Electric Works, to purchase and pay for the equipment, accessories, and service in accordance with the terms and conditions set forth above.

Company name: _____

Purchaser name and title (please print): _____

Purchaser signature: _____

Date: _____ Purchase Order # _____

Delivery Date Requested by Purchaser: _____

If a delivery date is not provided, BCEW will postpone the release of product orders with its respective vendors until the date is provided in writing. It is the sole responsibility of the Purchaser to provide a delivery date within the current factory lead times.

13625 Danielson Street, Poway, CA 92064 (HQ)
8647 Helms Ave, Unit #100, Rancho Cucamonga, CA 91730
322 Lindbergh Avenue, Livermore, CA 94551
Phone – 866.938.8200 Fax – 619.938.8202
www.BCEW.com

REFERENCE:

BCEW # 125216-updated 9-7-2021

8 of 8

PLEASE INCLUDE PRELIM INFORMATION WHEN ISSUING A PURCHASE ORDER.

KOHLER GENERATOR SALES - SERVICE - PARTS - RENTALS

To learn more, visit our website at www.BCEW.com

13625 Danielson Street, Poway, CA 92064 (HQ)
8647 Helms Ave, Unit #100, Rancho Cucamonga, CA 91730
322 Lindbergh Avenue, Livermore, CA 94551
Phone – 866.938.8200 Fax – 619.938.8202
www.BCEW.com



Your Collicutt Energy Equipment Quotation



CORDERILLAS HEALTH SYSTEM

Quote #: 53600B

7/21/2020

Dear Project Estimator,

Thank you for the opportunity to provide pricing for the equipment on the referenced project. We are pleased to quote as follows:

MTU 16V2000 DS1250, 1250KW, 277/480V, 3-Phase, IBC, Outdoor Diesel Genset
Automatic Transfer Switch, 150A, 277/480V, 3 Pole, Delayed Transition, NEMA 1, Qty. 6
Automatic Transfer Switch, 400A, 277/480V, 3 Pole, Delayed Transition, NEMA 1, Qty. 4
Automatic Transfer Switch, 1200A, 277/480V, 3 Pole, Delayed Transition, NEMA 1, Qty. 1
ATS 8 Channel Remote Annunciator, Qty. 2
Customer Operational Training
Start-Up & Commissioning per NFPA 110, 4 Hrs. Load Bank Test, Fuel Tank Pressure Test

Plus Applicable Taxes
Net Price: \$355,600.00

Collicutt Energy Services is quoting to the following:

Submittal: 1-2 week(s) after receipt of written purchase order.

Lead time: 15-17 week(s) after receipt of written release for production and approval submittals.

Warranty: 2 Year Basic Warranty. The manufacturer's warranty policy will be part of the submittal package.



Your Collicutt Energy Equipment Quotation



Bill of Materials

MTU 16V2000 DS1250

Unit Specification: UL2200, 60Hz Standby Application

IBC Seismic Certification: With IBC 50974-01C 2012 2015

Temp Rise: 105°

SYSTEM CONFIGURATION

40 Deg C Cooling System

2000 Amp 600 Volt 3 Pole 100% LSI CB, Auxillary Contact, Shunt Trip

Starting Batteries (8D) with Battery Rack, Qty 4 of each

- 8D Battery filled with Acid

- Battery Rack mounted and installed

Battery Charger: NRG-24-20-HCLS

Battery Charger Mounted & DC Wired

20 Deg F Coolant Preheater (480V 1PH - 6000W)

Coolant Preheater Mounted

With Coolant Preheating System Isolation Valves

Genset Enclosure: Level 3 Enclosure

Steel Enclosure Type

130mph Wind Rated Steel

Sound Attenuation Kit

Interior Enclosure Lighting:

- Interior enclosure lighting is designed to automatically use either AC or DC power.

Vibration Isolation: Pad Isolators

ENGINE CONFIGURATION

Engine System

Oil Drain

Exhaust System

Internal Silencer 14"

FUEL SYSTEM: Sub Base Fuel Tank, 5500 Usable Gallons, UL-142 Listed

Extend Standard Vent(s) 12' Above Grade (Shipped Loose)

Alarm Fill Panel for Leak, Low, High and Critical High Nema 3R, Relays, DC or AC

5 Gallon Spill Containment (Tank Mount)

Overfill Prevention Valve (2" NPT)

Fuel Water Separator - Standard (Dual)

Air Intake System

Air Filter (Standard)

GENERATOR CONFIGURATION

Includes D510C Regulator

With PMG

Generator Strip Heater

IP23 Ingress Protection

LSA 50.2L8

Generator Includes:

- Paralleling CT – 1 mounted and wired

- Metering CT – 3 mounted and wired

CONTROL PANEL CONFIGURATION

Circuit Breaker Position 1:



Your Collicutt Energy Equipment Quotation



Ground Fault Indication (GFI)

Control Panel Mounted LH Side

(4) Relay Option

The 4-relay board includes (4) 10 amp form C relays customizable for user defined functionality.

Standard outputs are as follows:

1. Engine Run
2. Engine Run
3. Engine Fail
4. Minor Alarm

Remote Emergency Stop

Contact Expansion Module (CEM)

RDP-110 Annunciator Panel

2 Remote Annunciators

MGC-3000 Series

Warranty: Standard Two (2) Year / 3,000 Hour Basic Standby Limited Warranty

MISCELLANEOUS

Paint Color: RAL 7001 Grey

Documentation

1 CD Format

Additional Options

200 Amp Distribution Panel (UL)

•200A 120/240VAC 1PH UL Listed 20-Position with Main Breaker

Unit Includes One (1) Convenience Receptacle

Note - This option will be factory-wired to the distribution panel (if selected)

Quantity (1) Service Filter Kit:

16V2000 Spare Parts Kit:

- Standard Air Filter
- Standard Fuel Water Separator

FUNCTIONAL TESTING

Acceptance Testing

Standard Commercial Test

SHIPPING CONDITIONS

Freight

Ship unit with fluids installed



Your Collicutt Energy Equipment Quotation



(C)larifications, (D)eviations, and (E)xceptions

Review specification sections 262612, 263600 and electrical drawings.

Section 2.4: Generator set enclosure w 58 hour sub base tank dimensions (fill in blank from EC & A)

Section 2.4: Generator set sizing for elevator loads not reviewed. Generator rating can only meet 10% of kW rating for 15 seconds for regenerative loads.

Section 2.5D: Generator sub base tank rated for 58 hours operation

Rotary hand pump not included for sub base tank operation

Section 2.5E: Generator equipped with unit mounted radiator within sound enclosure

Section 2.5J: MTU factory color chart provided during submittal process

Section 3.5: Standard field NFPA110 field testing provided with four hour load bank testing.

Standard Collicutt fuel tank pressure testing included. Eight hour fuel tank and piping testing not provided

Standard delayed transition automatic transfer switched provided in bill of materials

Automatic transfer switches provided with standard AIC ratings, 65k rating not included.

Installation contractor to provide current limit fuses if required upon electrical study

The following items are not included, unless specifically provided for above

1. There is no off-loading, installation, or anchoring of this equipment included in our proposal.
2. All electrical and mechanical connections are to be done by others.
3. There is no fuel included.
4. There are no permits of any kind included.
5. There are no services of any independent testing agency included.
6. Your local air board may require you to have a PM Filter. See Emissions Note below.
7. There is no special lugging included only the manufacturer's standard lugs.

Emissions Notes

The California Air Resource Board (CARB) and local Air Quality Management Districts (AQMDs) regulate emissions for emergency standby engines. Based on the installation site, some generators may require the use of a particulate filter based on the sites distance from a school or sensitive receptor. Particulate filters may also be required for Title V and major polluting sites. Consult the local air district for permitting and more information on the required emission controls required.

Emergency generators are permitted to run a maximum of 50 hours per year but this could be less depending on the permit and site specific conditions. Should a particulate filter be installed, generator loading, run time, # of cold starts/execising can be a factor. Passive diesel particulate filters regenerate when the engine is ran at approximately 60% loaded. If the generator is ran at low or no loads, the customer should consider the following options:

1. Do not oversize the generator compared to building load. Allow for a building load test to run the generator at 60% or greater load.
2. Have the generator load banked throughout the year. The number of times depends on the particulate filter brand and the numbers of cold starts.

A load bank can be included in this quotation as part of the equipment offering or we can provide a preventative maintenance contract which can include load bank testing.

3. Purchase an active particulate filter which regenerates on its own when the generator is running.



Your Collicutt Energy Equipment Quotation



The Terms and Conditions of Sale below constitute an Agreement between Collicutt Energy Services (Collicutt) and Project Estimator (Customer). The provisions of this agreement supercede all prior agreements, negotiations, representations and warranties whether written, oral or otherwise, and no waiver, alteration, or modification of this agreement shall be binding unless agreed to in writing and signed by both Collicutt and Customer.

QUOTATIONS are valid for thirty (30) days from the date of quotation unless agreed to in writing by Collicutt. A Quotation is not a valid acceptance of an offer to sell unless (1) a Purchase Order signed by an authorized representative of the Customer is accepted by Collicutt and (2), approved by Collicutt's Credit Department. Equipment in stock is subject to prior sale.

CHANGES AND CANCELLATION - Customer agrees to pay for any changes in scope, design or work plan from that ordered. Collicutt shall have the right to subcontract any or all work covered by the sale. Sale is nonassignable by the Customer without prior written approval of Collicutt. The Customer may cancel the order upon written notice to Collicutt. The Customer agrees to pay Collicutt for any costs incurred up to the date of cancellation.

TERMS - All billings are net fifteen (15) days from the date of invoice. Retention is not acceptable. Customers not adhering to payment terms agreed to pay delinquency charges of 1.5% per month or the maximum allowable by law, whichever is greater, on the unpaid balance. If Collicutt commences an action to collect amount due the Customer agrees to reimburse Collicutt all collection costs, attorney fees and court costs.

FINAL ACCEPTANCE - Final acceptance shall occur at time of delivery. Offloading is the Customer's responsibility unless otherwise provided for. Storage and interest charges will result when equipment and accessories ready for shipment to the Customer are held in Collicutt's inventory due to Customer's inability to accept delivery.

LIMITED WARRANTY: Collicutt warrants to the Customer that the equipment will materially conform to the specifications in the Quotation and will be free from material defects in material and workmanship. Warranty on the engines, parts and add-ons is limited to the warranty extended by the particular engine, component part or add-on manufacturer. Collicutt is not a manufacturer and makes no warranty and shall not, under any circumstances, be liable for any indirect or special, incidental or consequential damages, including but not limited to, loss of production, loss of profit, loss of use or business interruption, or any other economic loss, whether arising from contract, tort, strict liability or any other theory of law. Any person operating the equipment is responsible for doing so in accordance with the manufacturer's guidelines. Failure to perform all scheduled maintenance and operate the equipment within the manufacturer's may result in damage to the equipment and denial of warranty.

HOURS OF SERVICE - Any delivery, startup, commissioning, testing, training or any other service will be provided Monday to Friday from 7:30 am to 5:00 pm. Any delivery or service requested or provided at any other time will be subject to additional charges unless specifically provided for in the quotation.

RETURNED MERCHANDISE - Equipment, accessories and parts cannot be returned without Collicutt's written approval. Equipment, accessories and parts must be in salable condition. Customer must pay transportation costs and restocking charge of twenty-five percent (25%) of invoice amount.

SECURITY INTEREST - Collicutt retains and Customer hereby grants Collicutt a lien and security interest in equipment sold, including all accessions to and replacements of the equipment, until the Customer has made payment in full in accordance with the provisions herein. Customer shall cooperate fully with Collicutt in executing such documents as Collicutt may deem necessary for the protection of such security interest.

TAXES, LICENSES, PERMITS AND INSURANCE - Customer shall pay to Collicutt the amount of any sales, use, excise, duty or similar tax attributable to the sale covered hereby, whether or not included in the purchase or quotation price. Collicutt will assume no responsibility for obtaining permits or licenses other than those specifically provided for. Customer shall reimburse Collicutt for the cost of providing any insurance related rights or waivers associated with Collicutt's existing insurance policies. Where taxes do not apply upon sale or resale, Customer shall provide Collicutt with appropriate exemption certificates.

Customer acknowledges that he has not relied on Collicutt's skill or judgment in the selection of equipment and that any technical advice or specifications solicited regarding the equipment shall be used at Customer's own risk. Any noncertified drawings provided are descriptive in nature and not warranties of performance.

Except as expressly provided herein, the Agreement shall be governed, construed, and interpreted by the laws of the State of California. The United Nations Convention on Contracts for the International Sales of Goods (CISG) shall not apply. Collicutt elects to opt out of the CISG. Waiver by Collicutt of any breach of the Terms and Conditions of Sale included herein or on any attachment shall not be construed as a waiver of any other breach. Waiver by Collicutt of any breach must be in writing.

CUSTOMER'S REMEDIES - Collicutt shall not be in default and shall not be liable for delays by equipment manufacturers or suppliers or any other circumstances beyond Collicutt's reasonable control. Customer's exclusive and sole remedy on account or in respect of any breach, or to any express or implied warranty, shall be to secure replacement. Correction of any nonconformity shall constitute complete fulfillment of all liabilities of Collicutt. Collicutt's aggregate liability in any customer claim shall not, under any circumstances, exceed the payment received by Collicutt for the equipment and services furnished. Collicutt's liability shall be limited to those claims arising solely from the acts of the Collicutt. Collicutt shall not be liable whether in contract or in tort or under any other legal theory for loss of revenue, use, or profit or for the cost of any labor expended. Customer agrees to indemnify, save and hold Collicutt harmless for any special, direct, indirect, incidental, accidental or consequential damages to anyone by reason of any breach of contract or of any express or implied warranty.

**Your Collicutt Energy Equipment Quotation**

We appreciate this opportunity to offer our equipment for your consideration. Please feel free to call if you have any questions, or if we can help in any way.

Sincerely,

Tony Arroyo
Collicutt Energy Services Sales Representative
tony.arroyo@collicutt.com
Office 916-371-1667
Cell 415-660-6173

The authorized purchaser identified below accepts this Quotation and agrees, upon acceptance by Collicutt Energy Services, to purchase and pay for this equipment, accessories and service in accordance with the Collicutt Energy Services Inc. Terms and Conditions of Sale.

Company Name: _____

Contact Name: _____

Purchaser Authorized Signature: _____

Contact Title: _____

Date: _____

Purchase Order: _____

For additional terms of sale, please visit:
www.collicutt.com/ustermsofsale



Your Collicutt Energy Equipment Quotation





Skanska USA Building Inc.

One California Street
Suite 1400
San Francisco, CA 94111, United States
Phone +1 628 895 6302
Web www.skanska.com

March 16, 2021

Via Email and FedEx Overnight (Signature Required)

Mr. Scott Gurley
County of San Mateo
Project Development Unit
555 County Center, Floor 2
Redwood City, CA 94063

Reference: Cordilleras Health System Replacement Project, Redwood City, CA
County of San Mateo
Contract Dated August 23, 2018 ("Owner Contract")
Notice of Change/Disputed Work

Dear Mr. Gurley:

This is to notify you that Skanska USA Building, Inc. ("Skanska") has been provided with, informed of, and/or impacted by the below-referenced clarification, determination, action or inaction by Owner or Architects/Engineers, Work, third party, and/or other event that exceeds the requirements of or does not comply with Contract Documents, or otherwise will result in Skanska seeking additional compensation in time or money or damages as applicable (hereinafter referred to "Disputed Work").

Specifically, we are notifying you of the following Disputed Work: **Per the RFI 0041 response and as discussed at the RFI 0041 follow-up meeting on March 3, 2012 as well as at the OAC meeting on March 16, 2021, the Cordilleras Health System Replacement Project must comply with the US EPA's Tier 4 emission requirements per the Bay Area Air Quality Management District (BAAQMD) letter that was issued on December 21, 2020. Providing a Tier 4 generator in lieu of the specified Tier 2 Generator is a change to the Contract Documents. Per the March 3, 2021 meeting (notes are attached for reference), the Design Team will ultimately need to issue a Bulletin with all design changes associated with this updated requirement. At this time, Skanska understands that the requirement to upgrade to a Tier 4 Generator will impact Collins (Electric), Harris (HVAC), Broadway Mechanical (Plumbing), Bradley (Concrete), and also has the potential to impact work at the Equipment Yard and surrounding hardscape/landscape, including the PV Canopy (By Others). Skanska will provide an updated notice of change once the extent of the impact is fully understood.**

Pursuant to the Owner Contract, including, but not limited to, Article XII of the General Conditions and the contract modification procedures, we hereby provide notice of above-referenced Disputed Work. Please also see the enclosed preliminary cost proposal for the Disputed Work.

This is also to notify you that on March 3, 2021, we will begin the above-referenced additional work (Disputed Work), starting with requesting pricing and sizing information from various Tier 4 Generator Manufacturers, but are expecting to be compensated for it. Until a new generator is specified, however, Skanska will not be able to proceed further with this scope of work. If you do not want us to perform this work as an extra to the contract, please immediately notify us before we incur additional costs in the preparation for performance of this extra work. If we do not hear from you right away, we will proceed on the basis that you agree with our plan to perform this work.

Please do not hesitate to contact me with any questions.

Very truly yours,
SKANSKA USA BUILDING INC.

A handwritten signature in black ink, appearing to read 'R. Chaith', with a stylized flourish at the end.

Raki Chaith
Project Manager

Enclosure(s): Preliminary Cost Proposal

Copy: Sam Lin, County of San Mateo
Adam Ely, County of San Mateo
Lindsay Corotis, Skanska USA Building Inc.
James Spadaccia, Skanska USA Building Inc.
Sihaya Clifford, Skanska USA Building Inc.

Chaitt, Raki

From: Chaitt, Raki
Sent: Wednesday, March 3, 2021 5:01 PM
To: 'John Bangert'; 'Scott Gurley'; Dominic Daughtrey; Hsu, JT; Lang, Amber; Fong, Caroline; Spadaccia, James
Cc: Petersen, Don; Godoy, Johana; Chew, Chris
Subject: RE: Cordilleras - RFI 41 Generator Emission Review
Attachments: 0041.Emergency Generator Emission Change.pdf; Tier 4 System (002).pdf; Exhaust Skid Pics.pdf

Hi All,

Thanks for the call today. Attached is RFI 41 and the preliminary example Tier 4 genset documents we reviewed during the meeting.

Here are bullet points from our discussion:

- John (Collins) is reaching out to various Tier 4 genset manufacturers for pricing/sizing information. Also reviewing feasibility for using two smaller models together instead of a larger model so not to exceed the 1000bhp threshold that triggers the Tier 4 requirement.
- Scott (PDU) will contact the various AHJs to determine if this new BAAQMD requirement can be waived or is N/A for the project, but confirmed that the team shall continue to develop the design for Tier 4 in parallel. Once path forward is confirmed, Bulletin will be issued for scope changes.
- Raki (Skanska) will submit a notification to PDU regarding potential impact for this RFI and continue to coordinate with Collins/Cannon for possible solutions.
- Amber/JT (Cannon) will also continue to research/develop design updates for Tier 4.

Thanks,

Raki Chaitt, LEED AP BD+C

Project Manager
Skanska USA Building, Inc.

1 California Street
Suite 1400
San Francisco, CA 94111, United States

Mobile +1 347 346 3739

Skanska USA

usa.skanska.com

Connect With Us: [Blog](#) | [Facebook](#) | [Twitter](#) | [LinkedIn](#) | [Instagram](#) | [YouTube](#)

-----Original Appointment-----

From: Chaitt, Raki

Sent: Tuesday, March 2, 2021 4:48 PM

To: Chaitt, Raki; John Bangert; Scott Gurley; Dominic Daughtrey; Hsu, JT; Lang, Amber; Fong, Caroline; Spadaccia, James

Subject: Cordilleras - RFI 41 Generator Emission Review

When: Wednesday, March 3, 2021 2:00 PM-3:00 PM (UTC-08:00) Pacific Time (US & Canada).

Where: Webex

Agenda:

Discuss impact of attached RFI 41 on the Cordilleras Project

Please forward invite to others who may need to join.

-- Do not delete or change any of the following text. --

When it's time, join your Webex meeting here.

Join meeting

More ways to join:

Join from the meeting link

<https://skanska.webex.com/skanska/j.php?MTID=md62b6729c547c165f534979499d5a3b2>

Join by meeting number

Meeting number (access code): 185 656 2394

Meeting password: BtCxiZGA323

Tap to join from a mobile device (attendees only)

[+1-415-655-0001](tel:+14156550001),,1856562394## US Toll

Join by phone

+1-415-655-0001 US Toll



Project Development Unit
555 County Center Floor 2
Redwood City, CA 94063
www.smcgov.org

Construction Change Directive (CCD) No. 007 – Generator PC015 Cordilleras (01 2600 1.03.D)

Owner:

County Manager's Office
Project Development Unit
555 County Center
Redwood City, CA 94063

Entity: Skanska

1 California Street.

Suite 1400
San Francisco, CA 94111

Date: May 25, 2021**Issued by:** Scott Gurley**SCOPE of WORK: Generator Design****Ref:****DIRECTION:**

- ☐ Proceed with Work on the mutually agreed lump sum Adjustment (cost and time) stated below.
- ☒ Proceed with Work while negotiating a firm price. Keep force account records until price is established.
- ☐ Proceed with Work on a cost reimbursable (force account) basis. Not to exceed \$ _____
- ☐ Proceed with Work and respond to Narrative below, in ten days, per Specification Section 012600 1.02.C.5.

NARRATIVE:

Skanska is hereby directed to provide a Kohler generator, including custom enclosure shop drawings, coordination time, furnish, and delivery of the generator and associated enclosure to meet BAAQMD Tier 4 requirements and acoustical requirements within the contract documents. ROM NTE is set at \$738,000.00 (not including base contract credits). The generator and associated enclosure is to be coordinated with Cannon Design for any modifications to adjacent areas around generator and/or connection modifications where generator interfaces with any other scope of work, however the desire is to contain the generator and associated enclosure to the area as noted within the contract documents Generator Design is to meet the BAAQMD Tier 4 requirements for full project back up capacity for 72 hours as noted in current contract document. Kohler has been identified by the team, after review with other manufacturers as the most suitable manufacturer for this modified custom generator approach. A final Change Order Request is to be submitted by CMAR with final pricing including credits for initial generator scope for review and approval by PDU and BOS.

ADJUSTMENT:

Cost: ☒ TBD ☐ Add ☐ Deduct \$ See Narrative **Schedule Impact:** ☐ TBD ☐ 0 calendar days

When signed by the County, this Change Directive becomes effective immediately, and the Design Build Entity shall proceed as Directed above. Payment for the Work shall not be requested or processed until a corresponding Change Order is fully executed. Disputed Work shall be addressed under Contract Dispute clauses.

PDU PM/CM Recommendation:

DocuSigned by:

25-May-2021 | 09:17 PDT

(signature)

Scott Gurley

(date)

Owner/County Authorization:

(signature)

(date)

(printed)

CMAR

(signature)

(date)

James Spadaccia

(printed)

james.spadaccia@skanska.com



Skanska USA
1 California Street
Suite 1400
San Francisco, California 94111
Phone: (510) 285-1800
Fax: (510) 285-1801

Project: 4318012 - Cordilleras Health System Replacement Project
200 Edmonds Road
Redwood City, California 94062

Emergency Generator Emission Change

TO:	Dolores Garcia (CannonDesign) Scott Gurley (SMCPDU (San Mateo County Project Development Unit))	FROM:	Christopher Chew (Skanska USA Building Inc. (CA-San F)) 1 California Street, Suite 1400 San Francisco, California 94111
DATE INITIATED:	02/04/2021	STATUS:	Closed on 03/01/21
LOCATION:		DUE DATE:	02/11/2021
URGENCY	High	REFERENCE:	BAAQMD Letter Dated 2020.12.21 - BACT Determination for Diesel Back-Up Engines Greater than or equal to 1,000 Brake Horsepower
COST IMPACT:	Yes (Unknown)	SCHEDULE IMPACT:	Yes (Unknown)
DRAWING NUMBER:		SPEC SECTION:	263213 - Engine Generator Sets
RECEIVED FROM:	John Bangert (Collins Electrical Company, Inc. (CA))	RESPONSIBLE CONTRACTOR:	Collins Electrical Company, Inc. (CA)
SUBCONTRACTOR RFI #	3		
RFI CATEGORY	Existing or Unforeseen Condition	RFI DISCIPLINE	Electrical

COPIES TO:

Vince Bui (**Skanska USA Building Inc. (CA-San Franc)**), Raki Chaitt (**Skanska USA Building Inc. (CA-San Franc)**), Christopher Chew (**Skanska USA Building Inc. (CA-San Franc)**), Sihaya Clifford (**Skanska USA Building Inc. (CA-San Franc)**), Dominic Daughtery (**SMCPDU (San Mateo County Project Develo)**), Caroline Fong (**Skanska USA Building Inc. (CA-San Franc)**), Dolores Garcia (**CannonDesign**), Johana Godoy (**Skanska USA Building Inc. (CA-San Franc)**), Scott Gurley (**SMCPDU (San Mateo County Project Develo)**), Natalie Heimsoth (**Skanska USA Building Inc. (CA-San Franc)**), JT Hsu (**CannonDesign**), Don Petersen (**Skanska USA Building Inc. (CA-San Franc)**), Michael Smith (**Skanska USA Building Inc. (CA-San Franc)**), James Spadaccia (**Skanska USA Building Inc. (CA-San Franc)**), Jakob Van Ekelenburg (**Skanska USA Building Inc. (CA-San Franc)**)

Question from Christopher Chew (Skanska USA Building Inc. (CA-San Fran) at 09:08 AM on 02/04/2021

Collins Electric received a letter from the Bay Area Air Quality Management District (BAAQMD) stating that all generators rated over 1000 break horsepower will need to meet U.S. EPA's Tier 4 emissions standards. The letter was issued on Dec 21, 2020, and applies to any new and open permit applications deemed complete after Jan 1, 2020 (retroactive).
The project team is requesting the owner and design team to review the retroactive changes by BAAQMD to determine the project impact.

Attachments:

[RFI 003 - Emergency Generator Emission Change.pdf](#)

Official Response: Dolores Garcia (CannonDesign) responded on Saturday, February 27th, 2021 at 4:08PM PST

Amber Lang/CannonDesign, 02/26/21

Based on 12/21/2020 Bay Area Air Quality Management District letter, discussion with BAAQMD Air Quality Technician, and people in Collins Electric over the last two weeks, it is our understanding that the generator needs to comply with US EPA's Tier 4 emission requirements. Though this generator is for emergency use only, BAAQMD changed the emission requirements in December 2020. We understand the cause was likely due to the recent California wild fires and resulting rolling blackouts, which caused a huge demand for generators. This prompted BAAQMD to increase the emission standards for larger emergency use generators from previously Tier 2 to Tier 4 level, in order to combat the added emission from added generators.

Attachments:

All Replies:

**Response from Scott Gurley (SMCPDU (San Mateo County Project Develo) at 07:19 AM on 03/01/2021**

Please see response from CannonDesign.

Attachments:**Response from Dolores Garcia (CannonDesign) at 04:08 PM on 02/27/2021**

Amber Lang/CannonDesign, 02/26/21

Based on 12/21/2020 Bay Area Air Quality Management District letter, discussion with BAAQMD Air Quality Technician, and people in Collins Electric over the last two weeks, it is our understanding that the generator needs to comply with US EPA's Tier 4 emission requirements.

Though this generator is for emergency use only, BAAQMD changed the emission requirements in December 2020. We understand the cause was likely due to the recent California wild fires and resulting rolling blackouts, which caused a huge demand for generators. This prompted BAAQMD to increase the emission standards for larger emergency use generators from previously Tier 2 to Tier 4 level, in order to combat the added emission from added generators.

Attachments:

BY

DATE

COPIES TO



Collins Electrical Company, Inc.
6761 Sierra Court, Suite D
Dublin, CA 94568
Phone: (925) 392-0134 Fax: (925) 248-2572
www.collinselectric.com

Issued: 02/02/21
Respond by: 02/16/21

SKANSKA USA BUILDING INC
2800 N. CENTRAL AVENUE
SUITE 1000
PHOENIX, AZ 85004
Phone: (480) 212-2124
Fax:

REQUEST FOR INFORMATION

Our Project Name (Number): CORDILLERAS HEALTH SY-617 (219001)

RFI Number: CE-RFI 3

Subject: EMERGENCY GENERATOR EMISSION CHANGE

Attention: Raki Chaitt

Potential Cost Impact: Yes

Potential Schedule Impact: Yes

Specification Section: 263213

Reference: Emergency Generator Emissions Change

Sent via: Email

External ID: BAAQMD 12.21.2021 letter

We are requesting information on the following:

We just received the attached Bay Area Air Quality Management District (BAAQMD) letter stating that all generators rated over 1000 break horsepower will require additional emission controls equipment. The letter was issued on December 21, 2020 and stated the requirement change would be retroactive starting January 1st 2020. Please have the design team and owner review and determine what project impact this will have on cost when ordering the 1250 KW unit. See the attached BAAQMD December 21, 2020 letter and



**BAY AREA
AIR QUALITY
MANAGEMENT
DISTRICT**

ALAMEDA COUNTY
John J. Bauters
Pauline Russo Cutter
Scott Haggerty
Nate Miley

CONTRA COSTA COUNTY
John Gioia
David Hudson
Karen Mitchoff
(Secretary)
Mark Ross

MARIN COUNTY
Katie Rice

NAPA COUNTY
Brad Wagenknecht

SAN FRANCISCO COUNTY
VACANT
Shamann Walton
Tyrone Jue
(SF Mayor's Appointee)

SAN MATEO COUNTY
David J. Canepa
Carole Groom
Davina Hurt

SANTA CLARA COUNTY
Margaret Abe-Koga
Cindy Chavez
(Vice Chair)
Liz Kniss
Rod G. Sinks
(Chair)

SOLANO COUNTY
James Sperring
Lori Wilson

SONOMA COUNTY
Teresa Barrett
Shirlee Zane

Jack P. Broadbent
EXECUTIVE OFFICER/APCO

Connect with the
Bay Area Air District:



12/21/2020

Mr. Richard Corey
Executive Officer *Richard*
California Air Resources Board
1001 I Street,
Sacramento, CA 95814

Mr. Drew Bohan
Executive Director *Drew*
California Energy Commission
1516 Ninth Street
Sacramento, CA 95814

**RE: BACT Determination for Diesel Back-Up Engines Greater than or
equal to 1,000 Brake Horsepower**

Dear Mr. Corey and Mr. Bohan,

The purpose of this letter is to inform your agencies that the Bay Area Air Quality Management District (Air District) has established a best available control technology (BACT) guideline for large (greater or equal to 1,000 brake horsepower) diesel engines used for emergency standby power that requires them to meet the U. S. EPA's Tier 4 emissions standards. This determination will apply to any new and open permit application with a diesel backup engine ≥ 1000 bhp that is deemed complete after 1/1/2020.

The Air District is the entity charged with permitting for stationary sources of air pollution in the nine-county region surrounding the San Francisco bay. Air District permits are required by law for:

- Any stationary equipment that may cause air pollution;
- Modifications to existing permitted equipment or their permit conditions;
- Permitted equipment that is moved to a new location;
- Transfer of permitted equipment to new owners; and
- Installation of equipment used to control emissions.

As part of our permitting processes, The Air District's New Source Review Rule - Regulation 2, Rule 2 (Regulation 2, Rule 2) - requires that new or modified sources of air pollutants undergo permit review for Best Available Control Technology (BACT). BACT2 "Achieved-In-Practice", applies to the most effective emission controls already in use or the most stringent emission limit achieved in the field for the type and capacity of equipment comprising the source under review and operating under similar conditions.

BACT Determinations for Diesel Back-Up Engines
Page 2

December 21, 2020

Regulation 2, Rule 2, states that any new or modified source which results in an increase in emissions of precursor organic compounds (POC), non-precursor organic compounds (NPOC), nitrogen oxides (NO_x), sulfur dioxide (SO₂), particulate matter (PM₁₀), or carbon monoxide (CO) in excess of 10 pounds per highest day must be reviewed for possible application of BACT. California Health and Safety Code Section 42300 authorizes delegation of stationary source permitting authority from the state to the local air pollution control districts, including the setting of rules and definitions.


For the BACT Guideline, the Air District relied on its evaluations of the following projects, which are both emergency standby engines that are installed and operating in compliance with the U.S. EPA Tier 4 emissions standards:

- Air District Permit Application 27020 (San Jose – Santa Clara Regional Wastewater Facility, Four Emergency Diesel Standby Engines, each 4,376 BHP)
- Air District Permit Application 25115 (Sutro Tower, Inc., Emergency Diesel Standby Engine, 1,881 BHP).

The Air District also relied on an evaluation of the permit and source test results of the Microsoft – MWH Data Center, in Quincy, Washington. The permit limits that Microsoft complies with are in units of g/bhp-hr: 0.5 NO_x, 0.14 NMHC, 0.02 PM filterable, 2.6 CO. These emergency diesel standby engines ranged from 0.75 MWe to 3.0 MWe.

Thank you for your attention and If you have any questions regarding this letter, please contact Damian Breen, Senior Deputy Executive Officer at (415) 749-5041.

Sincerely,



Jack P. Broadbent
Executive Officer/APCO

RE: Tier 4 Generator Narrative

Chaïtt, Raki <Raki.Chaïtt@skanska.com>

Fri 5/21/2021 4:31 PM

To: Scott Gurley <c_sgurley@smcgov.org>

Cc: Spadaccia, James <james.spadaccia@skanska.com>; Trinh, Hong <htrinh@CANNONDESIGN.COM>; Hsu, JT <jhsu@CANNONDESIGN.COM>; Fong, Caroline <Caroline.Fong@skanska.com>

CAUTION: This email originated from outside of San Mateo County. Unless you recognize the sender's email address and know the content is safe, do not click links, open attachments or reply.

Hi Scott,

I heard back from Collins:

They are still waiting on the Kholer correspondence, but in the meantime have more clarity on the PO. Kholer's PO process is to include the schematic drawings as well as to furnish & deliver the generator. If anything changes during design development, the PO cost can be reconciled via Change Order. This is a bit different than what we were planning for the CCD. Would it be possible to issue a CCD with direction to proceed with issuing a PO to Kholer for drawings, design coordination, furnish, and delivery of the custom tier 4 generator? It appears that they will not agree to a PO only for drawings/design coordination (i.e. pre-con portion).

The current ROM would be \$738,000.00 for that entire scope. Ideally the design development will happen fairly quickly after the CCD is issued and we can finalize the shop drawings and get our spot in the fabrication queue before any further increases to material costs or lead times can occur.

Thanks and let me know if you have any questions,

Raki Chaïtt, LEED AP BD+C

Project Manager

Skanska USA Building, Inc.

1 California Street

Suite 1400

San Francisco, CA 94111, United States

Mobile +1 347 346 3739

Skanska USA

usa.skanska.com

Connect With Us: [Blog](#) | [Facebook](#) | [Twitter](#) | [LinkedIn](#) | [Instagram](#) | [YouTube](#)

From: Hsu, JT <jhsu@CANNONDESIGN.COM>

Sent: Thursday, May 20, 2021 9:24 AM

To: Scott Gurley <c_sgurley@smcgov.org>

Cc: Spadaccia, James <james.spadaccia@skanska.com>; Trinh, Hong <htrinh@CANNONDESIGN.COM>; Chaïtt, Raki <Raki.Chaïtt@skanska.com>

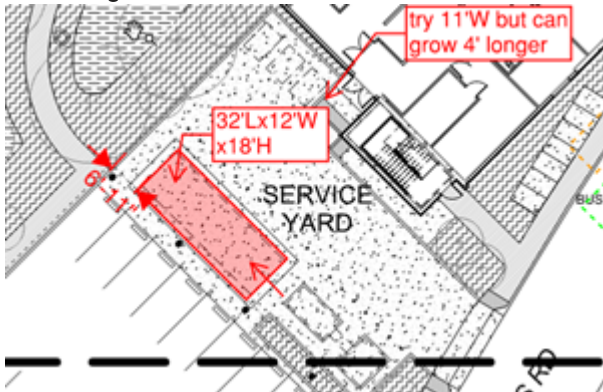
Subject: RE: Tier 4 Generator Narrative

Warning - External Email

Scott:

Allow me to add my 2 cents:

- Kohler generator, Collins Electrical, Skanska, and Cannon met multiple times. Kohler indicated a likelihood to have a generator like this to fit in the context.



- Cannon and Skanska need Kohler drawings to confirm this likelihood is realistic, before Cannon can move on to a detailed design.
- Because this generator is custom designed, Kohler will not produce a drawing without some sort of commitment from us.
- This CCD is for Kohler to produce this drawing.

I hope this helps,

Thanks

JT Hsu, AIA, LEED AP

Vice President
CannonDesign

T 310.229.2717 : M 424.288.1820: [gotomeeting](https://gotomeeting.com/join/123456789)

444 S. Flower St, Suite 4700
Los Angeles, California 90071
cannondesign.com

From: Chaitt, Raki <Raki.Chaitt@skanska.com>
Sent: Tuesday, May 18, 2021 9:57 AM
To: Scott Gurley <c_sgurley@smcgov.org>
Cc: Hsu, JT <jhsu@CANNONDESIGN.COM>; Spadaccia, James <james.spadaccia@skanska.com>; Trinh, Hong <htrinh@CANNONDESIGN.COM>
Subject: RE: Tier 4 Generator Narrative

Hi Scott,

I can request this from Collins, however as discussed, this is a custom and not an off-the-shelf-gen-set. Schematic Drawings and Design Development has a cost and there is currently no contractual relationship with Kohler.

Thanks,

Raki Chaitt, LEED AP BD+C
Project Manager
Skanska USA Building, Inc.

1 California Street
Suite 1400
San Francisco, CA 94111, United States

Mobile +1 347 346 3739

Skanska USA

usa.skanska.com

Connect With Us: [Blog](#) | [Facebook](#) | [Twitter](#) | [LinkedIn](#) | [Instagram](#) | [YouTube](#)

From: Scott Gurley <c_sgurley@smcgov.org>

Sent: Tuesday, May 18, 2021 7:29 AM

To: Chaith, Raki <Raki.Chaith@skanska.com>

Cc: Hsu, JT <jhsu@CANNONDESIGN.COM>; Spadaccia, James <james.spadaccia@skanska.com>; Trinh, Hong <htrinh@CANNONDESIGN.COM>

Subject: Re: Tier 4 Generator Narrative

Warning - External Email

Raki,

do you have any correspondence from Kohler on this requirement? Id like to include in the directive their position that they will not move forward without etc.

Best,

Scott

From: Chaith, Raki <Raki.Chaith@skanska.com>

Sent: Monday, May 17, 2021 3:29 PM

To: Scott Gurley <c_sgurley@smcgov.org>

Cc: Hsu, JT <jhsu@CANNONDESIGN.COM>; Spadaccia, James <james.spadaccia@skanska.com>; Trinh, Hong <htrinh@CANNONDESIGN.COM>

Subject: RE: Tier 4 Generator Narrative

CAUTION: This email originated from outside of San Mateo County. Unless you recognize the sender's email address and know the content is safe, do not click links, open attachments or reply.

Hi Scott,

The scope being requested for the CCD for Skanska is direction to proceed with providing schematic drawings from Kohler via Collins and Skanska/Collins/Kohler to participate in design development/coordination pre-construction activities with Cannon to finalize their (Cannon's) Design Bulletin for the Tier 4 Generator Scope.

I don't have a ROM from Kohler for the schematic drawings/pre-construction, but maybe we can use \$75K as a place holder?

Thanks,

Raki Chaitt, LEED AP BD+C

Project Manager
Skanska USA Building, Inc.

1 California Street
Suite 1400
San Francisco, CA 94111, United States

Mobile +1 347 346 3739

Skanska USA

usa.skanska.com

Connect With Us: [Blog](#) | [Facebook](#) | [Twitter](#) | [LinkedIn](#) | [Instagram](#) | [YouTube](#)

From: Scott Gurley <c_sgurley@smcgov.org>

Sent: Monday, May 17, 2021 2:33 PM

To: Chaitt, Raki <Raki.Chaitt@skanska.com>

Cc: Hsu, JT <jhsu@CANNONDESIGN.COM>; Spadaccia, James <james.spadaccia@skanska.com>; Trinh, Hong <htrinh@CANNONDESIGN.COM>

Subject: Re: Tier 4 Generator Narrative

Warning - External Email

Thanks Raki,

Can you clarify the scope that is being requested and the reason the CCD is needed? It sounds like this would only be for design services of the new generator which would be by Skanska/Collins/Kohler in coordination with Cannon? Do you have a ROM for this design scope of this new Generator from Kohler/Collins? I am looking for these details to keep the CCD clear.

Best,

Scott

From: Chaitt, Raki <Raki.Chaitt@skanska.com>

Sent: Tuesday, May 11, 2021 11:02 AM

To: Scott Gurley <c_sgurley@smcgov.org>

Cc: Hsu, JT <jhsu@CANNONDESIGN.COM>; Spadaccia, James <james.spadaccia@skanska.com>; Trinh, Hong <htrinh@CANNONDESIGN.COM>

Subject: Tier 4 Generator Narrative

CAUTION: This email originated from outside of San Mateo County. Unless you recognize the sender's email address and know the content is safe, do not click links, open attachments or reply.

Scott,

See below/attached for Tier 4 Generator narrative from Cannon. Let us know if there are any questions ahead of issuing a CCD for direction to proceed with pre-construction design development activities. After Design is completed, Skanska recommends that Cannon issue a Bulletin with design updates and Skanska will be able to request pricing and proceed with updated scope.

Thanks,

Raki Chaith, LEED AP BD+C

Project Manager

Skanska USA Building, Inc.

1 California Street

Suite 1400

San Francisco, CA 94111, United States

Mobile

+1 347 346 3739

Skanska USA

usa.skanska.com

Connect With Us: [Blog](#) | [Facebook](#) | [Twitter](#) | [LinkedIn](#) | [Instagram](#) | [YouTube](#)

From: Hsu, JT <jhsu@CANNONDESIGN.COM>

Sent: Thursday, May 6, 2021 5:21 PM

To: Chaith, Raki <Raki.Chaith@skanska.com>

Cc: Lang, Amber <alang@CANNONDESIGN.COM>; Trinh, Hong <htrinh@CANNONDESIGN.COM>

Subject: FW: Cordilleras Generator Discussion with Kohler

Mimecast Attachment Protection has deemed this file to be safe, but always exercise caution when opening files.

Warning - External Email

Raki:

To respond to this topic, please find our description:

Tier 4 Generator BAAQMD Requirement	Hong Trinh (CannonDesign), JT Hsu (CannonDesign)			Open	Old
04/27/2021: <ul style="list-style-type: none">Cannon, Kohler, and Collins developed initial plan to provide a Tier 4 Generator with minimum impact to yard and adjacent areas. Cannon states that the generator will have a similar footprint, but will be two stories tall.In order to finalize this design a CCD is needed for Skanska, Collins, and Kohler to complete Preconstruction requirements. Cannon and Skanska to help PDU with narrative.					

Description:

The generator at the Cordilleras Health System Replacement Project now must comply with the emission standard for diesel generator at a Tier 4 level. The regulations is set out to reduce NOx, particulate matter, and hydrocarbon emissions substantially from the emissions of a generator set. To comply with this change, the following criteria need to change:

- Change from Tier 2 emissions output to Tier 4
- Must fit within a 32'L x 12'W footprint. There is no height restriction. See attachment.

The generator design criteria to remain the same as approved and bid.

- 1250KW diesel generator
- 277/480V 3phase, 4W, 60HZ output
- Fuel tank capacity to be sized for 58 hours of supply at full load
- Sound Attenuation level shall be a maximum of 79 dBA at 23 feet (7 meters)

Thanks

Thank you

JT Hsu, AIA, LEED AP

Vice President

CannonDesign

T 310.229.2717 : M 424.288.1820: [gotomeeting](https://gotomeeting.com/join/123456789)

444 S. Flower St, Suite 4700
Los Angeles, California 90071
cannondesign.com

This message, including any attachments hereto, may contain privileged or confidential information and is sent solely for the attention and use of the intended addressee(s). If you are not an intended addressee, you may neither use this message nor copy or deliver it to anyone. In such case, you should immediately destroy this message and kindly notify the sender by reply email.

Thank you.



Skanska USA
1 California Street Suite 1400
San Francisco, CA 94111

4318012 - Cordilleras Health System Replacement Project
200 Edmonds Road
Redwood City, CA 94062

Emergency Generator Emission Change

TO:	Dolores Garcia (CannonDesign) , Scott Gurley (SMCPDU (San Mateo County Project Development Unit))	FROM:	Christopher Chew (Skanska USA Building Inc. (CA-San Francisco))
DATE INITIATED:	02-04-2021	STATUS:	Closed on 03/01/2021
LOCATION:		DUE DATE:	02-11-2021
DRAWING NUMBER:		SPECIFICATION SECTION:	263213 Engine Generator Sets
COST IMPACT:	Yes (Unknown)	SCHEDULE IMPACT:	Yes (Unknown)
REFERENCE:	BAAQMD Letter Dated 2020.12.21 - BACT Determination for Diesel Back-Up Engines Greater than or equal to 1,000 Brake Horsepower		
RESPONSIBLE CONTRACTOR:	Collins Electrical Company, Inc. (CA)	RECEIVED FROM:	John Bangert (Collins Electrical Company, Inc. (CA))

COPIES TO:

Caroline Fong (Skanska USA Building Inc. (CA-San Francisco)) , Christopher Chew (Skanska USA Building Inc. (CA-San Francisco)) , Dolores Garcia (CannonDesign) , Dominic Daughtery (SMCPDU (San Mateo County Project Development Unit)) , Don Petersen (Skanska USA Building Inc. (CA-San Francisco)) , JT Hsu (CannonDesign) , Jakob Van Ekelenburg (Skanska USA Building Inc. (CA-San Francisco)) , James Spadaccia (Skanska USA Building Inc. (CA-San Francisco)) , Johana Godoy (Skanska USA Building Inc. (CA-San Francisco)) , Michael Smith (Skanska USA Building Inc. (CA-San Francisco)) , Natalie Heimsoth (Skanska USA Building Inc. (CA-San Francisco)) , Raki Chaitt (Skanska USA Building Inc. (CA-San Francisco)) , Scott Gurley (SMCPDU (San Mateo County Project Development Unit)) , Sihaya Clifford (Skanska USA Building Inc. (CA-San Francisco)) , Vince Bui (Skanska USA Building Inc. (CA-San Francisco))

Question from Christopher Chew at 12:08 PM on 02/04/2021

Collins Electric received a letter from the Bay Area Air Quality Management District (BAAQMD) stating that all generators rated over 1000 break horsepower will need to meet U.S. EPA's Tier 4 emissions standards. The letter was issued on Dec 21, 2020, and applies to any new and open permit applications deemed complete after Jan 1, 2020 (retroactive).
The project team is requesting the owner and design team to review the retroactive changes by BAAQMD to determine the project impact.

Attachments:

[RFI 003 - Emergency Generator Emission Change.pdf](#)

1. Official Response: Dolores Garcia at 07:08 PM on 02/27/2021

Amber Lang/CannonDesign, 02/26/21

Based on 12/21/2020 Bay Area Air Quality Management District letter, discussion with BAAQMD Air Quality Technician, and people in Collins Electric over the last two weeks, it is our understanding that the generator needs to comply with US EPA's Tier 4 emission requirements. Though this generator is for emergency use only, BAAQMD changed the emission requirements in December 2020. We understand the cause was likely due to the recent California wild fires and resulting rolling blackouts, which caused a huge demand for generators. This prompted BAAQMD to increase the emission standards for larger emergency use generators from previously Tier 2 to Tier 4 level, in order to combat the added emission from added generators.

Attachments:

All Replies

Response from Scott Gurley at 10:19 AM on 03/01/2021

Please see response from CannonDesign.



Attachments:

Response from Dolores Garcia at 07:08 PM on 02/27/2021

Amber Lang/CannonDesign, 02/26/21

Based on 12/21/2020 Bay Area Air Quality Management District letter, discussion with BAAQMD Air Quality Technician, and people in Collins Electric over the last two weeks, it is our understanding that the generator needs to comply with US EPA's Tier 4 emission requirements. Though this generator is for emergency use only, BAAQMD changed the emission requirements in December 2020. We understand the cause was likely due to the recent California wild fires and resulting rolling blackouts, which caused a huge demand for generators. This prompted BAAQMD to increase the emission standards for larger emergency use generators from previously Tier 2 to Tier 4 level, in order to combat the added emission from added generators.

Attachments:

RFI #0041

Skanska USA
 1 California Street
 Suite 1400
 San Francisco, California 94111
 Phone: (510) 285-1800
 Fax: (510) 285-1801

Project: 4318012 - Cordilleras Health System Replacement Project
 200 Edmonds Road
 Redwood City, California 94062

Emergency Generator Emission Change

TO:	Scott Gurley (SMCPDU (San Mateo County Project Development Unit))	FROM:	Christopher Chew (Skanska USA Building Inc. (CA-San F)) 1 California Street, Suite 1400 San Francisco, California 94111
DATE INITIATED:	02/04/2021	STATUS:	Open
LOCATION:		DUE DATE:	02/11/2021
URGENCY	High	REFERENCE:	BAAQMD Letter Dated 2020.12.21 - BACT Determination for Diesel Back-Up Engines Greater than or equal to 1,000 Brake Horsepower
COST IMPACT:	Yes (Unknown)	SCHEDULE IMPACT:	Yes (Unknown)
DRAWING NUMBER:		SPEC SECTION:	263213 - Engine Generator Sets
RECEIVED FROM:	John Bangert (Collins Electrical Company, Inc. (CA))	RESPONSIBLE CONTRACTOR:	Collins Electrical Company, Inc. (CA)
SUBCONTRACTOR RFI #	3		
RFI CATEGORY	Existing or Unforeseen Condition	RFI DISCIPLINE	Electrical

COPIES TO:

Vince Bui (Skanska USA Building Inc. (CA-San Franc)), Raki Chaitt (Skanska USA Building Inc. (CA-San Franc)), Christopher Chew (Skanska USA Building Inc. (CA-San Franc)), Sihaya Clifford (Skanska USA Building Inc. (CA-San Franc)), Dominic Daughtery (SMCPDU (San Mateo County Project Develo)), Dolores Garcia (CannonDesign), Johana Godoy (Skanska USA Building Inc. (CA-San Franc)), Scott Gurley (SMCPDU (San Mateo County Project Develo)), Natalie Heimsoth (Skanska USA Building Inc. (CA-San Franc)), JT Hsu (CannonDesign), Don Petersen (Skanska USA Building Inc. (CA-San Franc)), Michael Smith (Skanska USA Building Inc. (CA-San Franc)), James Spadaccia (Skanska USA Building Inc. (CA-San Franc)), Jakob Van Ekelburg (Skanska USA Building Inc. (CA-San Franc))

Question from Christopher Chew (Skanska USA Building Inc. (CA-San Fran) at 09:08 AM on 02/04/2021

Collins Electric received a letter from the Bay Area Air Quality Management District (BAAQMD) stating that all generators rated over 1000 break horsepower will need to meet U.S. EPA's Tier 4 emissions standards. The letter was issued on Dec 21, 2020, and applies to any new and open permit applications deemed complete after Jan 1, 2020 (retroactive).
 The project team is requesting the owner and design team to review the retroactive changes by BAAQMD to determine the project impact.

Attachments:

[RFI 003 - Emergency Generator Emission Change.pdf](#)

Awaiting an Official Response

All Replies:

BY

DATE

COPIES TO



Collins Electrical Company, Inc.
6761 Sierra Court, Suite D
Dublin, CA 94568
Phone: (925) 392-0134 Fax: (925) 248-2572
www.collinselectric.com

Issued: 02/02/21
Respond by: 02/16/21

SKANSKA USA BUILDING INC
2800 N. CENTRAL AVENUE
SUITE 1000
PHOENIX, AZ 85004
Phone: (480) 212-2124
Fax:

REQUEST FOR INFORMATION

Our Project Name (Number): CORDILLERAS HEALTH SY-617 (219001)

RFI Number: CE-RFI 3

Subject: EMERGENCY GENERATOR EMISSION CHANGE

Attention: Raki Chaitt

Potential Cost Impact: Yes

Potential Schedule Impact: Yes

Specification Section: 263213

Reference: Emergency Generator Emissions Change

Sent via: Email

External ID: BAAQMD 12.21.2021 letter

We are requesting information on the following:

We just received the attached Bay Area Air Quality Management District (BAAQMD) letter stating that all generators rated over 1000 break horsepower will require additional emission controls equipment. The letter was issued on December 21, 2020 and stated the requirement change would be retroactive starting January 1st 2020. Please have the design team and owner review and determine what project impact this will have on cost when ordering the 1250 KW unit. See the attached BAAQMD December 21, 2020 letter and



**BAY AREA
AIR QUALITY
MANAGEMENT
DISTRICT**

ALAMEDA COUNTY
John J. Bauters
Pauline Russo Cutter
Scott Haggerty
Nate Miley

CONTRA COSTA COUNTY
John Gioia
David Hudson
Karen Mitchoff
(Secretary)
Mark Ross

MARIN COUNTY
Katie Rice

NAPA COUNTY
Brad Wagenknecht

SAN FRANCISCO COUNTY
VACANT
Shamann Walton
Tyrone Jue
(SF Mayor's Appointee)

SAN MATEO COUNTY
David J. Canepa
Carole Groom
Davina Hurt

SANTA CLARA COUNTY
Margaret Abe-Koga
Cindy Chavez
(Vice Chair)
Liz Kniss
Rod G. Sinks
(Chair)

SOLANO COUNTY
James Sperring
Lori Wilson

SONOMA COUNTY
Teresa Barrett
Shirlee Zane

Jack P. Broadbent
EXECUTIVE OFFICER/APCO

Connect with the
Bay Area Air District:



12/21/2020

Mr. Richard Corey
Executive Officer *Richard*
California Air Resources Board
1001 I Street,
Sacramento, CA 95814

Mr. Drew Bohan
Executive Director *Drew*
California Energy Commission
1516 Ninth Street
Sacramento, CA 95814

**RE: BACT Determination for Diesel Back-Up Engines Greater than or
equal to 1,000 Brake Horsepower**

Dear Mr. Corey and Mr. Bohan,

The purpose of this letter is to inform your agencies that the Bay Area Air Quality Management District (Air District) has established a best available control technology (BACT) guideline for large (greater or equal to 1,000 brake horsepower) diesel engines used for emergency standby power that requires them to meet the U. S. EPA's Tier 4 emissions standards. This determination will apply to any new and open permit application with a diesel backup engine ≥ 1000 bhp that is deemed complete after 1/1/2020.

The Air District is the entity charged with permitting for stationary sources of air pollution in the nine-county region surrounding the San Francisco bay. Air District permits are required by law for:

- Any stationary equipment that may cause air pollution;
- Modifications to existing permitted equipment or their permit conditions;
- Permitted equipment that is moved to a new location;
- Transfer of permitted equipment to new owners; and
- Installation of equipment used to control emissions.

As part of our permitting processes, The Air District's New Source Review Rule - Regulation 2, Rule 2 (Regulation 2, Rule 2) - requires that new or modified sources of air pollutants undergo permit review for Best Available Control Technology (BACT). BACT2 "Achieved-In-Practice", applies to the most effective emission controls already in use or the most stringent emission limit achieved in the field for the type and capacity of equipment comprising the source under review and operating under similar conditions.

BACT Determinations for Diesel Back-Up Engines
Page 2

December 21, 2020

Regulation 2, Rule 2, states that any new or modified source which results in an increase in emissions of precursor organic compounds (POC), non-precursor organic compounds (NPOC), nitrogen oxides (NO_x), sulfur dioxide (SO₂), particulate matter (PM₁₀), or carbon monoxide (CO) in excess of 10 pounds per highest day must be reviewed for possible application of BACT. California Health and Safety Code Section 42300 authorizes delegation of stationary source permitting authority from the state to the local air pollution control districts, including the setting of rules and definitions.

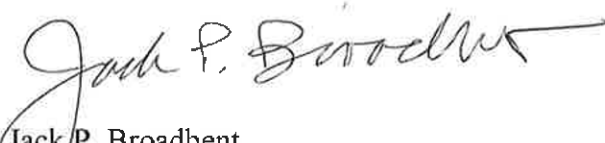
For the BACT Guideline, the Air District relied on its evaluations of the following projects, which are both emergency standby engines that are installed and operating in compliance with the U.S. EPA Tier 4 emissions standards:

- Air District Permit Application 27020 (San Jose – Santa Clara Regional Wastewater Facility, Four Emergency Diesel Standby Engines, each 4,376 BHP)
- Air District Permit Application 25115 (Sutro Tower, Inc., Emergency Diesel Standby Engine, 1,881 BHP).

The Air District also relied on an evaluation of the permit and source test results of the Microsoft – MWH Data Center, in Quincy, Washington. The permit limits that Microsoft complies with are in units of g/bhp-hr: 0.5 NO_x, 0.14 NMHC, 0.02 PM filterable, 2.6 CO. These emergency diesel standby engines ranged from 0.75 MWe to 3.0 MWe.

Thank you for your attention and If you have any questions regarding this letter, please contact Damian Breen, Senior Deputy Executive Officer at (415) 749-5041.

Sincerely,



Jack P. Broadbent
Executive Officer/APCO