

**STORM DRAIN AND WATER LINE EASEMENT
REDWOOD CITY, SAN MATEO COUNTY, CALIFORNIA**

An Easement for Storm Drain and Water Line purposes in the City of Redwood City, County of San Mateo, State of California, in and along a portion of Range E, Block 5 and Block 6, and Range D, Block 5 as shown on that certain map entitled "Town of Mezesville," filed for record on August 1, 1856, in Volume 1 of Maps at page 79, San Mateo County Records, more particularly described as follows:

BEGINNING at the intersection of the Easterly line of Winslow Street (formerly Fourth Street), as described on that certain agreement entitled "Agreement for Exchange of Real Property," dated February 8, 2005, unrecorded, and the Northerly line of vacated East Fuller Street (formerly D Street) extended to the Easterly line of Winslow Street as exchanged on said agreement;

THENCE along the Easterly line of said Winslow Street, North 3°41'27" West a distance of 29.10 feet to the **TRUE POINT OF BEGINNING**;

THENCE, leaving the Easterly line of Winslow Street, North 44°08'31" East a distance of 5.09 feet;

THENCE, North 86°06'59" East a distance of 70.03 feet;

THENCE, South 3°53'22" East a distance of 11.87 feet;

THENCE, North 86°06'38" East a distance of 6.00 feet;

THENCE, North 3°53'22" West a distance of 11.87 feet;

THENCE, North 86°06'59" East a distance of 152.33 feet;

THENCE, South 3°41'01" East a distance of 95.80 feet;

THENCE, South 86°18'59" West a distance of 22.97 feet;

THENCE, South 3°41'01" East a distance of 8.26 feet;

THENCE, North 86°18'59" East a distance of 28.97 feet;

THENCE, North 3°41'01" West a distance of 104.08 feet;

THENCE, North 86°06'59" East a distance of 9.08 feet;

THENCE, North 3°24'27" West a distance of 97.68 feet;

THENCE, North 87°23'14" East a distance of 222.52 feet;

**STORM DRAIN AND WATER LINE EASEMENT
REDWOOD CITY, SAN MATEO COUNTY, CALIFORNIA**

THENCE, South 2°36'52" East a distance of 11.40 feet;

THENCE, North 87°23'08" East a distance of 6.00 feet;

THENCE, North 2°36'52" West a distance of 11.40 feet;

THENCE, North 87°23'14" East a distance of 5.22 feet to a point on the Westerly line of Middlefield Road (formerly Second Street);

THENCE, along the Westerly line of Middlefield Road, North 3°38'15" West a distance of 20.00 feet;

THENCE, leaving said Westerly line of Middlefield Road, South 87°23'14" West a distance of 232.53 feet;

THENCE, South 49°35'54" West a distance of 20.19 feet;

THENCE, South 3°24'27" East a distance of 95.64 feet;

THENCE, South 86°06'59" West a distance of 232.25 feet to a point on said Easterly line of Winslow Street;

THENCE, along the Easterly line of aforementioned Winslow Street, South 3°41'27" East a distance of 13.40 feet to the **TRUE POINT OF BEGINNING**.

Contains 9,624 Square Feet, more or less.

APN: 052-341-240

APN: 052-337-020




Mennor C. Chan, P.L.S. 8406

7-13-18
Date

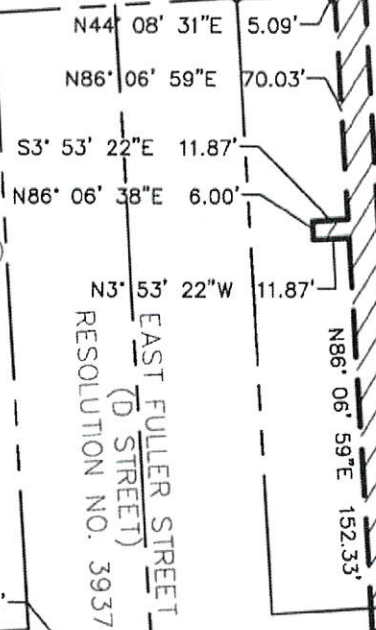
TELEMON ENGINEERING CONSULTANTS, INC.
855 Folsom Street, Suite 142
San Francisco, CA 94107
Tel: 415.837.1336

WINSLOW STREET
(FOURTH STREET)

S3° 41' 27"E 13.40'
N3° 41' 27"W 29.10'

BLOCK 6, RANGE E
LANDS OF THE COUNTY OF
SAN MATEO
APN 052-341-240

BLOCK 5, RANGE D
LANDS OF THE
COUNTY OF
SAN MATEO
APN 052-337-020



S86° 06' 59"W 5.09'
N86° 06' 59"E 70.03'
S3° 53' 22"E 11.87'
N86° 06' 38"E 6.00'
N3° 53' 22"W 11.87'
S86° 06' 59"W 232.25'
N86° 06' 59"E 152.33'

9,624 SQ.FT ±

HAMILTON STREET
(THIRD STREET)
RESOLUTION NO. 3937

S3° 41' 01"E 8.26'
N86° 18' 59"E 28.97'
S86° 18' 59"W 22.97'

S3° 41' 01"E 95.80'
N3° 41' 01"W 104.08'
N86° 06' 59"E 9.08'
S3° 24' 27"E 95.64'
N3° 24' 27"W 97.68'

S49° 35' 54"W 20.19'

BLOCK 5,
RANGE E
LANDS OF THE
COUNTY OF
SAN MATEO
APN 052-341-240

S2° 36' 52"E 11.40'
N87° 23' 08"E 6.00'

N2° 36' 52"W 11.40'
N87° 23' 14"E 5.22'
N3° 38' 15"W 20.00'

MIDDLEFIELD ROAD
(SECOND STREET)

LEGEND:

- PROPERTY LINE
- SDWLE
- SDWLE
- APN = ASSESSOR'S PARCEL NUMBER
- POB = POINT OF BEGINNING
- TPOB = TRUE POINT OF BEGINNING
- SDWLE = STORM DRAIN AND WATER EASEMENT



SCALE: 1" = 60'



855 FOLSOM STREET, SUITE 142
SAN FRANCISCO, CA 94107
TEL: 415-837-1336 FAX: 415-837-1354

EXHIBIT A
STORM DRAIN AND WATER LINE EASEMENT

REDWOOD CITY
SAN MATEO COUNTY, CA

DRAWING NO.	
SHEET NO.	REVISION
1	
REVISION DATE	
7-13-18	