

**To:** Parks and Recreation Commission  
**From:** Nicholas J. Calderon, Parks Director  
**Subject:** Quarry Park Pump Track Preferred Concept Design

**RECOMMENDATION:**

Make a recommendation to the San Mateo County Board of Supervisors to adopt the Quarry Park Pump Track Preferred Concept Design Plans, Specifications, and Estimates.

**BACKGROUND:**

The Quarry Park Master Plan (“Master Plan”) has been in development since 2016. Throughout the Master Plan’s public engagement process, a pump track – a continuous circuit of banked turns interspaced by rollers and other features that can be ridden on a bike without pedaling – has been the amenity most desired by those in attendance.

At the end of 2019, members of the Midcoast community constructed an unauthorized pump track on the Mirada East section of Quarry Park. While the Department could not allow the public to use this pump track due to safety concerns, it agreed to design, permit, and construct a pump track in the meadow at Quarry Park. The project location, shown on Exhibit A attached, was selected due to its: (i) relatively flat topography which requires minimal site preparation, (ii) absence of sensitive resources, (iii) ease of access for users and staff, and (iv) proximity to the parking lot. During development of the Master Plan, the public and Department also identified this area as an ideal location for a new amenity.

Once the project location was selected and broadly supported by the public, the Department and its consultants formed a Project Advisory Committee. The committee was comprised of members of the community, the Coastside Mountain Bikers, the Midcoast Community Council, and a director from the Granada Community Services District. The committee was tasked with selecting and evaluating three conceptual project alternatives; all are shown in Exhibit B attached. These project alternatives were presented to the public at a virtual workshop on November 4, 2020 that was attended by 56 participants. Through a survey administered during the workshop, 94% of survey respondents selected the Flying-X alternative. The survey was also posted online and received an additional 81 responses, of which, 43 (53%) respondents selected the Flying-X alternative. Due to the overwhelming support for the Flying-X alternative (64%), it has been selected as the Preferred Concept (Exhibit C).

**DISCUSSION:**

The Preferred Concept includes three features: the Flying-X pump track, a beginner pump track and a skills trail. The Flying-X pump track offers: (i) multiple routes to ride, (ii) a series of rollers designed to maximize speed and flow around the track, and (iii) several banked turns to support moderate to fast turns. While this track is designed for more experienced riders, it can also be enjoyed by beginner riders at slower speeds. For riders not yet ready for the Flying-X pump track, the beginner pump track will be available. This

track is smaller in size, contains fewer banked turns and rollers, and naturally limits the speed at which it can be ridden. Lastly, the Preferred Alternative contains a skills trail. This trail will encircle the two pump tracks and contain obstacles that are designed to be ridden at slower speeds and strengthen fundamental bicycling skills like balance and maneuverability.

By having all three features, and having each feature designed for different skill-level riders, the project achieves the Department's ultimate goal; to provide a family-friendly amenity that supports riders of all abilities.

The Department and its consultants are preparing the project Plans, Specifications, and Estimates ("PS&E"). The PS&Es will be prepared at the 60%, 90%, and 100% levels, and will be completed as soon as March. Simultaneously, the Department and its consultants will satisfy California Environmental Quality Act review and secure a Coastal Development Permit.

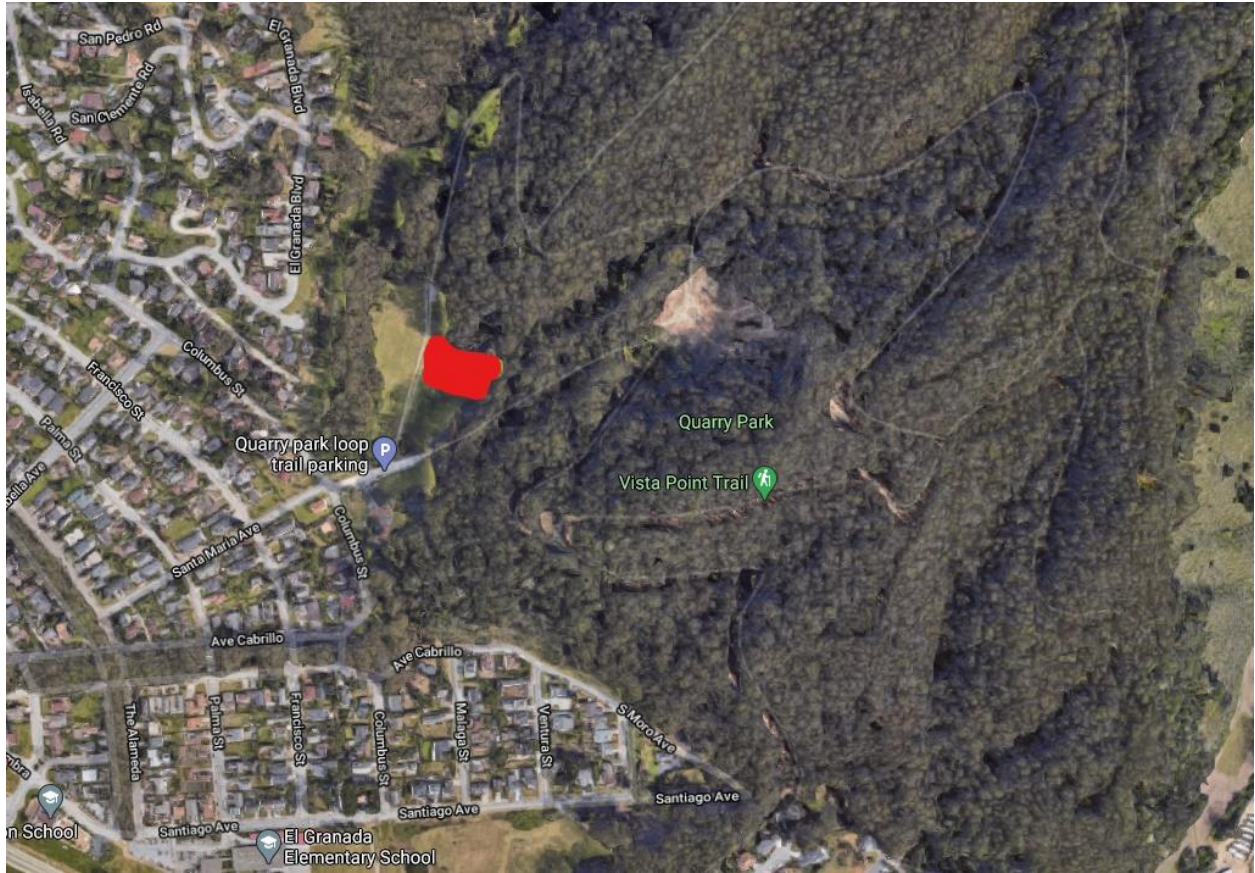
Once the 100% PS&Es have been adopted by the Board of Supervisors and the Coastal Development Permit has been obtained, the Department will advertise, award, and administer the construction contract. It is estimated that the project could be constructed by Summer/fall 2021.

Due to the project's overwhelming community support, on January 21, 2021, the Granada Community Services District's ("GCSD") Board of Directors unanimously agreed to provide up to \$100,000 for construction of the Preferred Concept. The GCSD will assume no maintenance or management obligations for any of the features. Further, the San Mateo County Parks Foundation secured a \$6,500 grant from REI that will be used for construction of the Preferred Concept.

**Fiscal Impact:**

The Granada Community Services District will provide up to \$100,000 for construction of the Preferred Concept. Further, the San Mateo County Parks Foundation has secured a \$6,500 grant from REI for construction of the Preferred Concept. Any expenses in exceedance of these funds will be paid for by the San Mateo County Mid-Coast Parks Development Fund. There is no Net County Cost associated with accepting this recommendation.

# Exhibit A



# Exhibit B

**BUTTERFLY PUMP TRACK**



**MERGER PUMP TRACK**



**FLYING X PUMP TRACK**



# Exhibit C

