

San Mateo County Board of Supervisors

Agenda Item 10 – Measure K Contract

San Mateo County Flood and Sea Level Rise Resiliency District

Len Materman, CEO

November 9, 2021

OneShoreline
Building Solutions for a Changing Climate

San Mateo County:

Ground Zero for Sea Level Rise Vulnerability

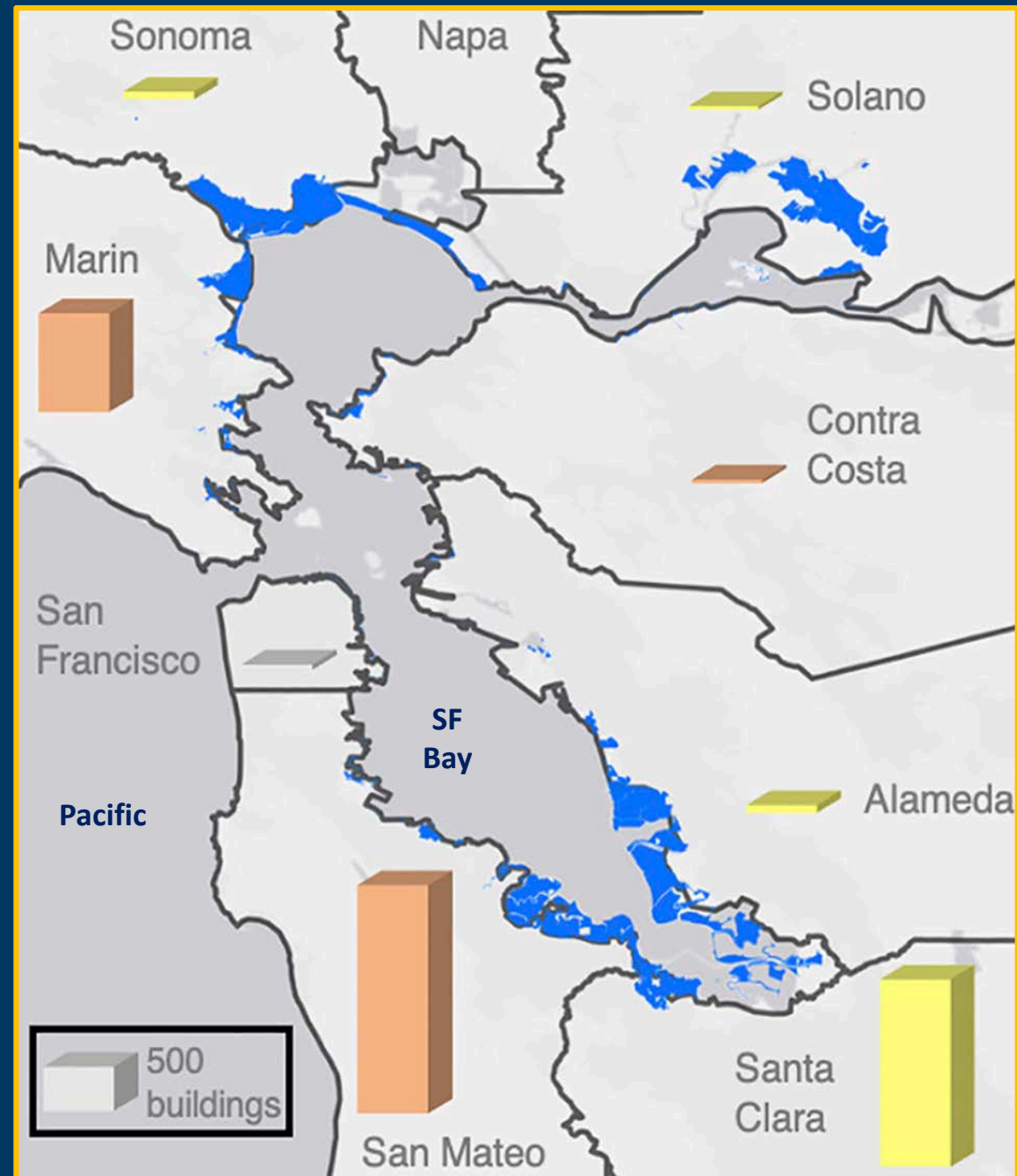
Most vulnerable CA county to 3 feet of sea level rise in terms of:

- population, including underrepresented population
- property value
- number of homes
- number of contaminated sites

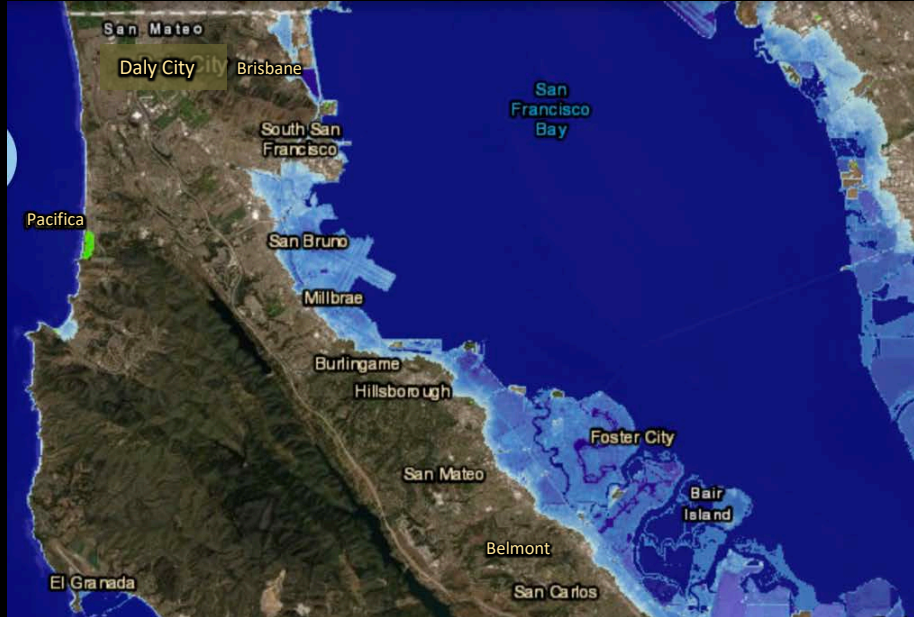
One of six counties in U.S. and only one on West Coast with over 100,000 people living in an area impacted by 3 feet of SLR.

Key community assets in the county vulnerable to sea level rise: schools, hospitals, beaches, highways, water treatment plants, power plants, wetlands, and major corporations.

On January 1, 2020, the District, known as OneShoreline, became the first countywide independent government agency in California focused on the water-related impacts of climate change.



This county's 11 cities along the Bay and 3 along the Pacific were not well-positioned to address this regional challenge



A long-standing County Flood Control District collected taxes and worked in 10% of the county and Bay shoreline and along none of the Pacific coastline

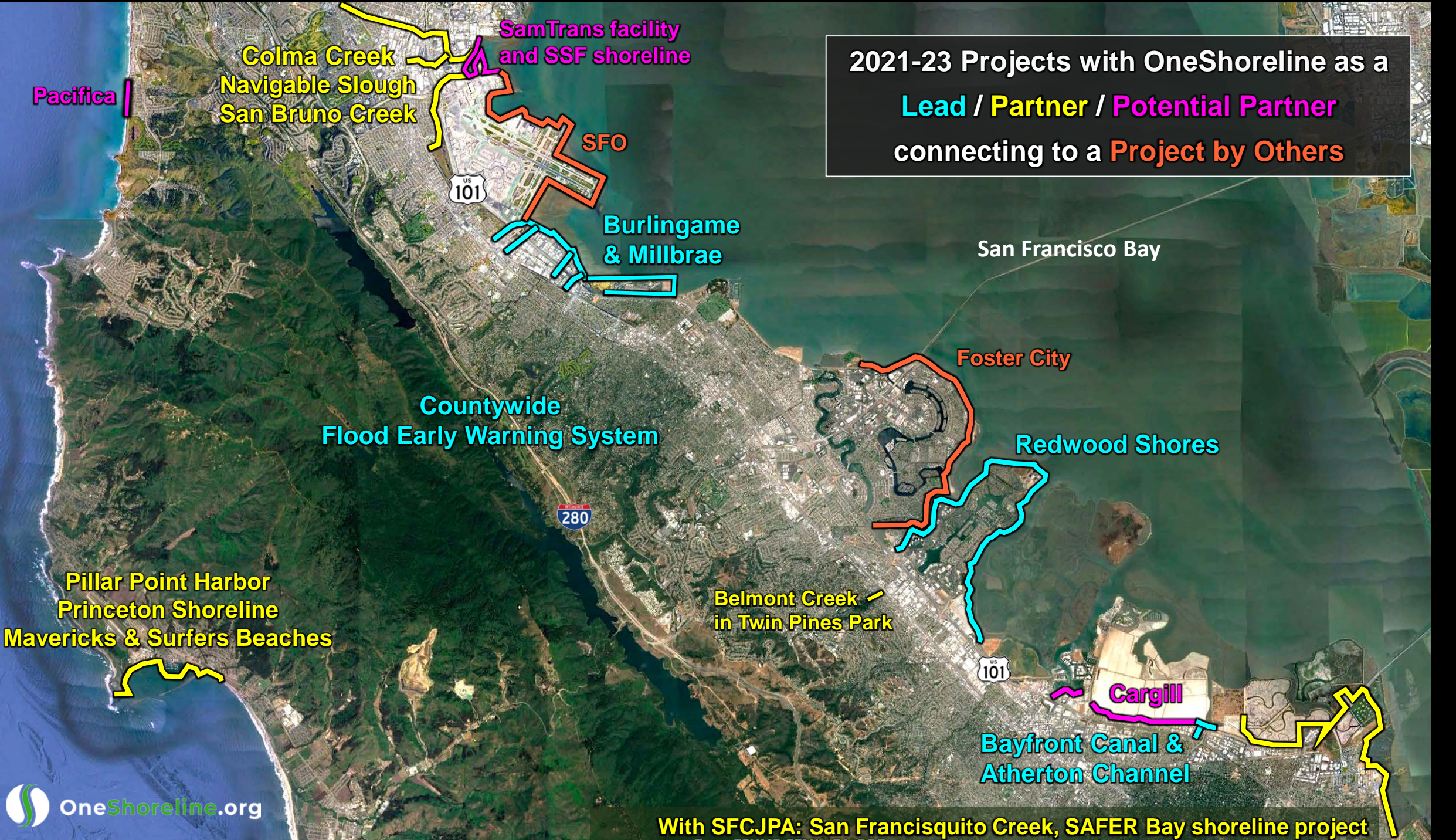
Resilience to climate change's impacts requires an urgent, holistic approach to:

- **GEOGRAPHY** – align and connect protection for neighboring jurisdictions
- **THREATS** – more extreme storms and substantial sea level rise
- **OBJECTIVES** – reduce threats; turn waterways & shorelines from liabilities into assets integrated into communities; utilize green infrastructure and public and private lands

Through State legislation (AB 825 in 2019), the District was established January 1, 2020 with start up funding from the County and all 20 cities within it.

District FY2021-22 priorities include:

2021-23 Projects with OneShoreline as a
Lead / Partner / Potential Partner
connecting to a **Project by Others**



Measure K funding would support District operations on 4 efforts for 18 months:

1. Complete the construction of, and maintain, our capital project to protect mobile home parks and businesses in unincorporated San Mateo County, Redwood City, and Menlo Park that frequently flood from the Bayfront Canal and Atherton Channel



2. **Develop designs and CEQA documents for new multi-jurisdictional projects to connect and align SLR protection, trails, and ecosystems for:**
- **Millbrae and Burlingame, connected to SFO**
 - **Redwood Shores (Redwood City, San Carlos, Belmont, and San Mateo County)**

SEA LEVEL RISE ADAPTATION ASSESSMENT

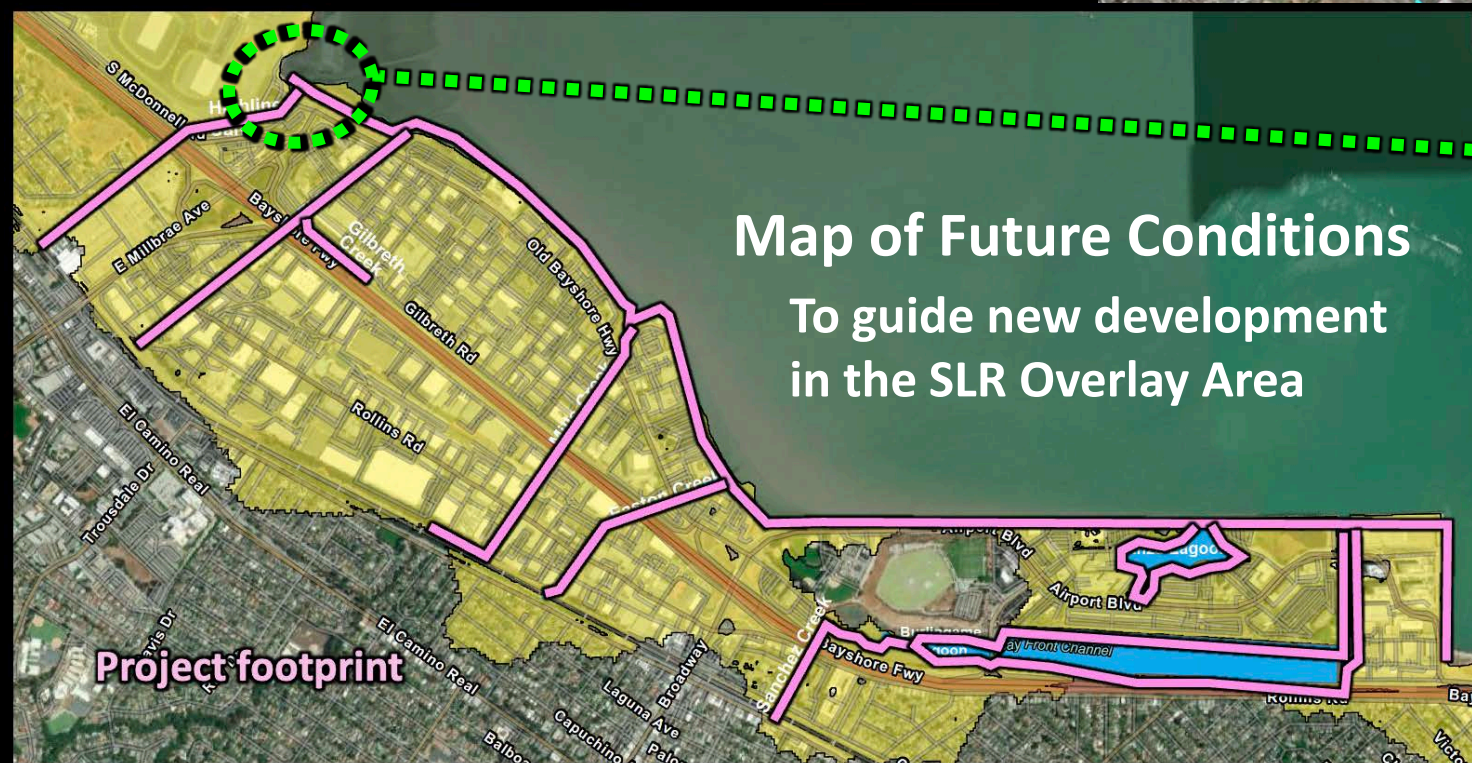
City of Millbrae, CA

Supported by Climate Ready SMC, an initiative of the County of San Mateo Office of Sustainability

Sea Change Burlingame
Proposed Sea Level Rise Adaptation Strategies Update to City Council

December 2nd, 2019

OneShoreline
Building Solutions for a Changing Climate



- Project Partners will:**
- establish common objectives & assumptions
 - share technical information
 - share environmental mitigations
 - share costs
 - utilize public & private lands to meet objectives

FEMA has notified the jurisdictions comprising Redwood Shores that they must raise and certify the levees to remain outside FEMA flood zone.

Only satisfying the FEMA requirement would be a short-term fix as benefits would be lost with sea level rise or when the FEMA map is revised again.

OneShoreline has been asked to lead this multi-jurisdictional effort.



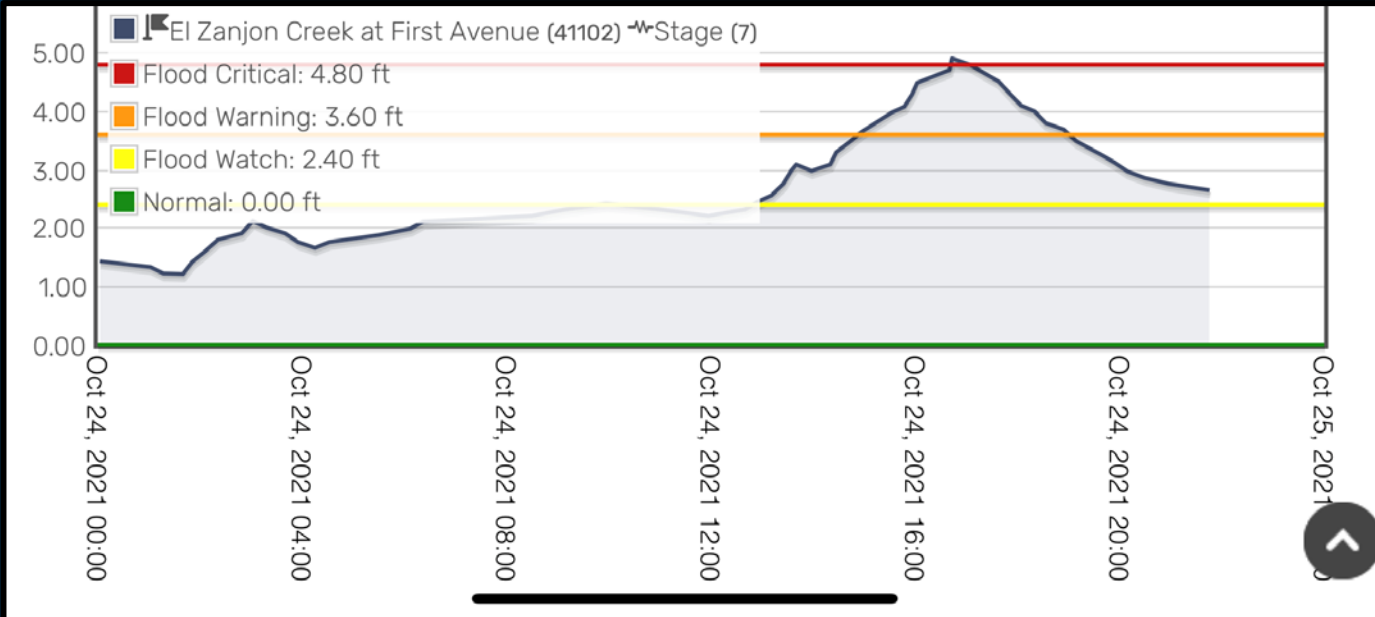
3. Complete a study of long-term solutions to address the inter-related issues facing unincorporated Princeton, Pillar Point Harbor, state & federal assets, and Surfers Beach





4. Enhance our flood early warning system on the Bayside, expand it to the coast side, and develop multi-jurisdictional Emergency Action Plans in four watersheds

The October 24, 2021 storm and the flood early warning system



Thank you