

# Device Registration Fee Ordinance

AGRICULTURE/ WEIGHTS & MEASURES

---

Koren Widdel,  
Sealer of Weights & Measures  
November 12, 2024

# OVERVIEW

---

- An annual device registration fees are charged to business owners for registering their commercial weighing and measuring devices.
- Chapter 5.124 - REGISTRATION FEES FOR WEIGHING AND MEASURING DEVICES
  - Authorized by Business and Professions Code (BPC) 12240.
- Assembly Bill 1304 (Papan) was signed into law raising the maximum allowable device registration fees found in BPC 12240.



# OVERVIEW

---

- 39,536 Commercial devices were registered in San Mateo County in 2024.
- Annual fees cover approximately 58% of the cost to run the program.



# Current and Proposed Device Registration Fee Comparison

	Current Fee Schedule	Proposed Fee Schedule
Device Type	January 1, 2016	January 3, 2025
Business Location Fee	\$100	\$120
Vapor Submeters at marinas, mobile home parks, recreational vehicle parks, and apartments	\$100/Business Location <u>Plus</u> \$4 per Meter	\$120/Business Location <u>Plus</u> \$10 per Meter
Water Submeters at marinas, mobile home parks, recreational vehicle parks, and apartments	\$100/Business Location <u>Plus</u> \$3 per Meter	\$120/Business Location <u>Plus</u> \$6 per Meter
Computing Scales and electronic counter scales interfaced with a POS <100lbs	\$100/Business Location <u>Plus</u> \$20 per scale	\$120/Business Location <u>Plus</u> \$25 per scale
All Other Commercial Weighing & Measuring Devices	\$100/Business Location <u>Plus</u> \$20 per Meter or Scale	\$120/Business Location <u>Plus</u> \$26 per scale
Maximum annual registration fee consisting of the business location and device fees for small computing scales and the Other Devices category	\$1,000	\$1,200
Late fee	100%	50%

# Revenue Vs Expenditures

---

Fiscal Year	Number of Devices Registered	Total work hours	Expenditures	Revenue	Difference
22/23	37,029	3,623	\$614,212	\$360,999	\$253,213
23/24	39,356	3,643	\$626,803	\$364,855	\$261,948
24/25 estimated	39,356	3,643	\$650,000	\$528,056	\$126,930

# Additional modifications to 5.124.020

---

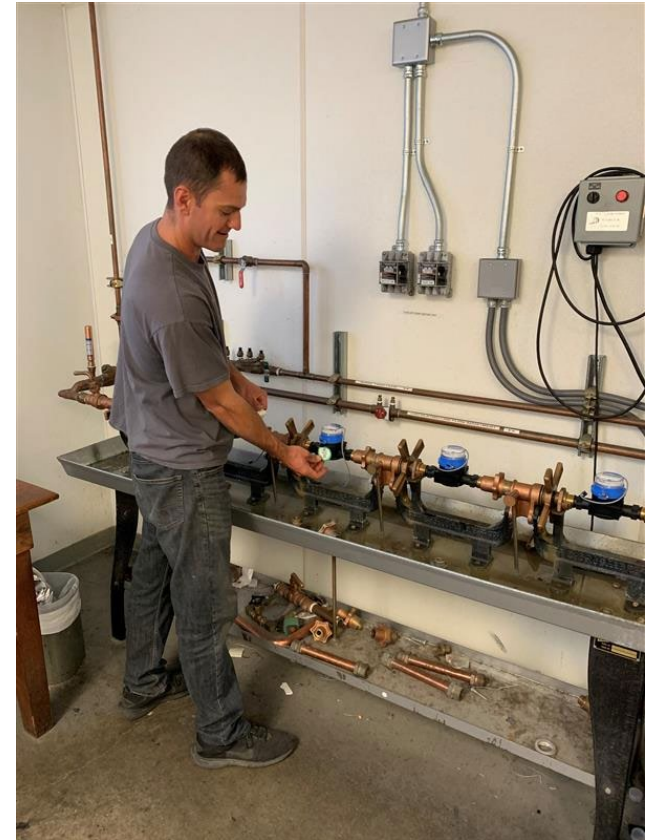
- **5.124.020(b)(3):** Lower the late penalty from 100% to 50%
- **5.124.020(c):** Waiving the location fee (\$120) for scales used at non-fixed locations (e.g. Farmer Market and Fishermen scales) that are delivered to the office for inspection.



# Fees for Testing Out-of-County Water Meters

---

- Adding Section 5.124.030 to the Ordinance Code
- Counties that possess the appropriate equipment to perform water submeter tests are required to test water submeters to be installed in another county. (BPC Section 12210.3)
- Sealer is authorized to charge a cost recovery fee for the inspection and testing of water submeters intended to be placed in service in another county. (BPC Section 12210.3(b))
- In Fiscal Year (23/24) the department spent 192 inspector hours testing 960 water submeters for other counties.



# QUESTIONS?

**KOREN WIDDEL**

SEALER OF WEIGHTS AND MEASURES

Department of Agriculture/Weights & Measures

728 Heller St, Redwood City, CA

650-363-4700

[Smateoag@smcgov.org](mailto:Smateoag@smcgov.org)