

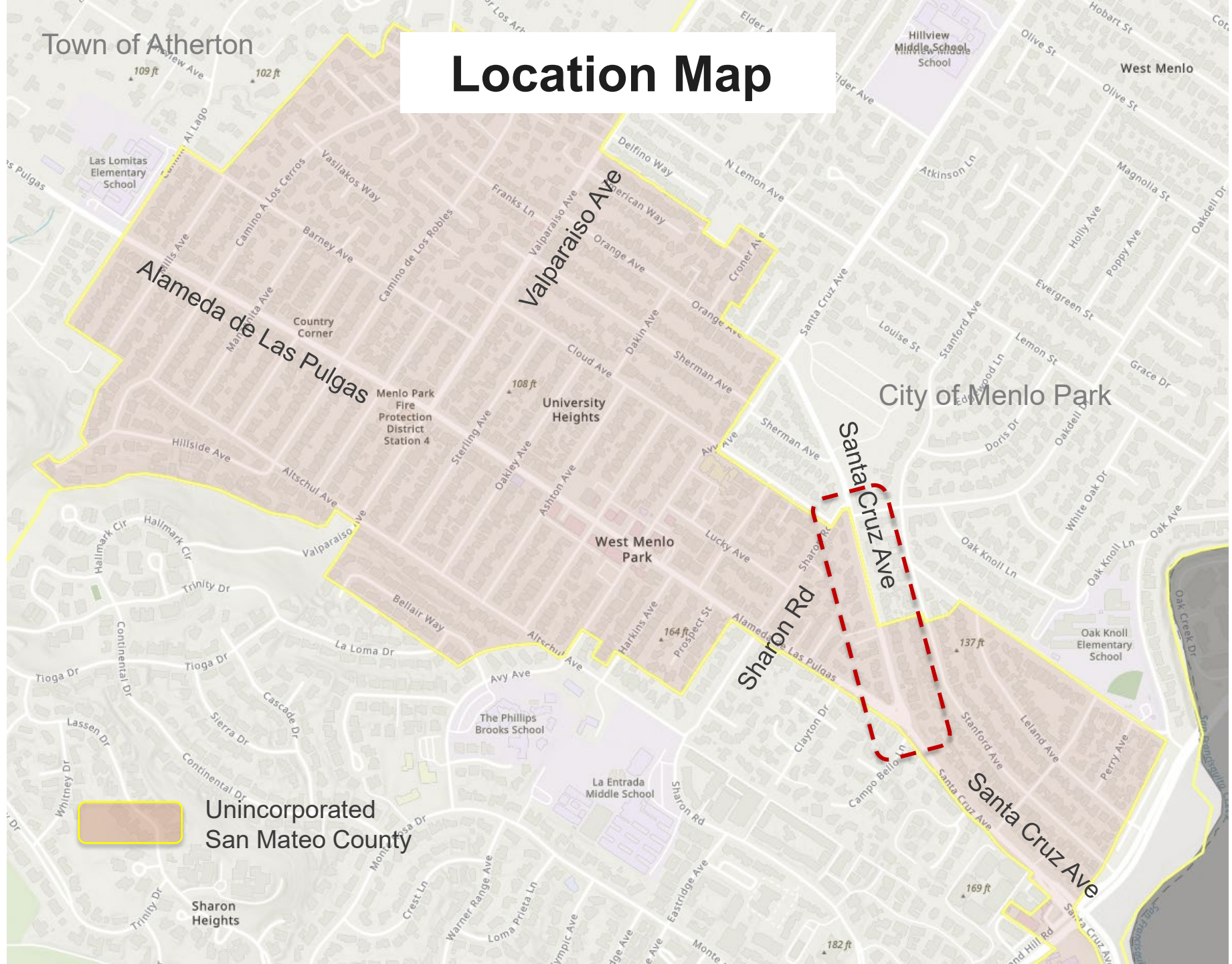
Adoption of an Ordinance Establishing 25 MPH Speed Limit on a Portion of Santa Cruz Avenue



Department of Public Works

**Board of Supervisors Meeting
April 8, 2025**

Location Map



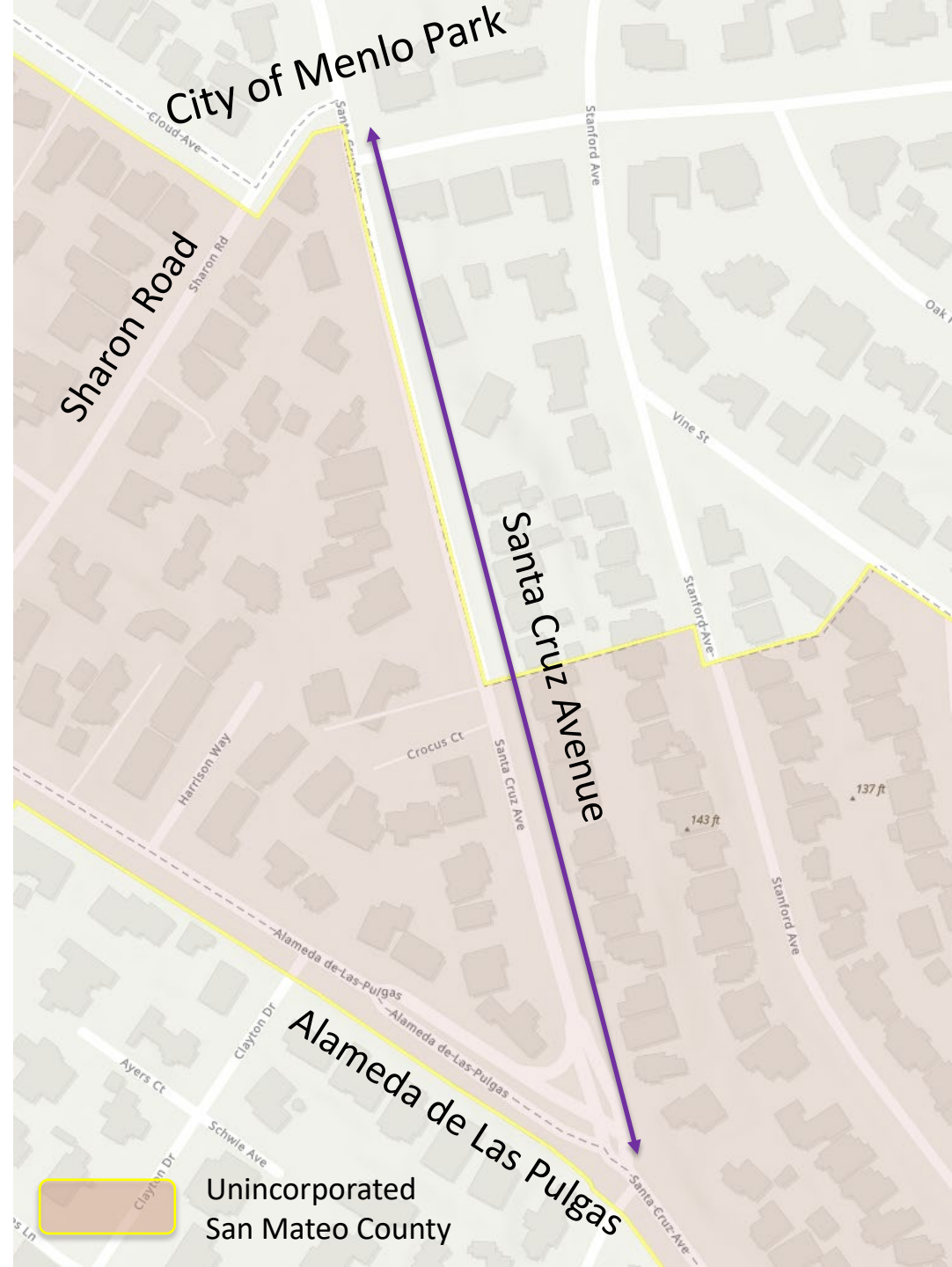
Unincorporated
San Mateo County

Santa Cruz Avenue:

- Existing speed limit of 30 MPH
- Primarily residential
- Meets definition of a Local Street

Recommendation:

- Establish speed limit of 25 MPH



Recommendation

Adopt an Ordinance:

Amending Sections 7.04.025 (Speed limit twenty-five miles per hour) and 7.04.030 (Speed limit thirty miles per hour) of Chapter 7.04 (Prima Facie Speed Limits) of the San Mateo County Ordinance Code to:

- **Establish a speed limit of 25 miles per hour on Santa Cruz Avenue between Alameda de las Pulgas and the corporate limits of the City of Menlo Park**

Thank You!



Questions?



Existing Codes

Section 22352(b)(1) of the California Vehicle Code (CVC)

- Prima facie speed limit of 25 miles per hour exists on any highway in any business or residential district unless a different speed is determined by local authority under procedures set forth in the code.

Section 40802(b)(1) of the California Vehicle Code (CVC)

- (b)(1) For purposes of this section, a local street or road is one that is functionally classified as “local” on the “California Road System Maps,” that are approved by the Federal Highway Administration and maintained by the Department of Transportation. It may also be defined as a “**local street or road**” if it primarily provides access to abutting residential property and meets the following three conditions:
 - (A) **Roadway width of not more than 40 feet.**
 - (B) **Not more than one-half of a mile** of uninterrupted length. Interruptions shall include official traffic control signals as defined in Section 445.
 - (C) **Not more than one traffic lane in each direction.**