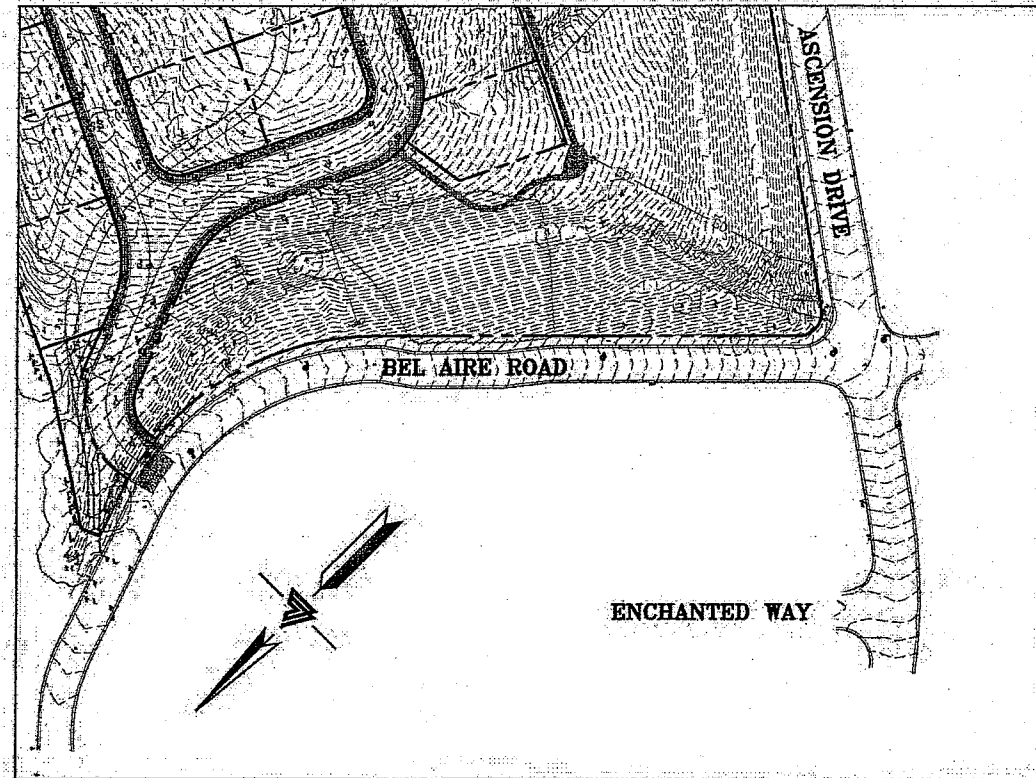


EXHIBIT A BEL AIRE HEIGHTS SUBDIVISION - OFFSITE SAN MATEO, CALIFORNIA

LEGEND

EXISTING	PROPOSED	DESCRIPTION
---	---	BOUNDARY
---	---	PROPERTY LINE
---	---	RETAINING WALL
---	---	LANDSCAPE RETAINING WALL
---	---	RAINWATER TIGHTLINE
---	---	SUBDRAIN LINE
---	---	TIGHTLINE
---	---	STORM DRAIN LINE
---	---	SANITARY SEWER LINE
---	---	WATER LINE
---	---	GAS LINE
---	---	PRESSURE LINE
---	---	JOINT TRENCH
---	---	SET BACK LINE
---	---	CONCRETE VALLEY GUTTER
---	---	EARTHEN SWALE
---	---	CATCH BASIN
---	---	JUNCTION BOX
---	---	AREA DRAIN
---	---	CURB INLET
---	---	STORM DRAIN MANHOLE
---	---	FIRE HYDRANT
---	---	SANITARY SEWER MANHOLE
---	---	STREET SIGN
---	---	SPOT ELEVATION
---	---	FLOW DIRECTION
---	---	DEMOLISH/REMOVE
---	---	BENCHMARK
---	---	CONTOURS
---	---	TREE TO BE REMOVED



KEY MAP
1" = 75'

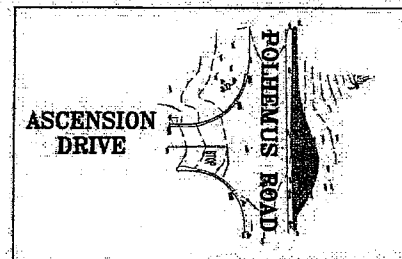
SITE BENCHMARK
SURVEY CONTROL POINT
MAG AND SHINER SET IN ASPHALT
ELEVATION = 587.50'
(ASSUMED)

NOTES

- ALL DISTANCES AND DIMENSIONS ARE IN FEET AND DECIMALS.
- UNDERGROUND UTILITY LOCATION IS BASED ON SURFACE EVIDENCE.
- BUILDING FOOTPRINTS ARE SHOWN TO FINISHED MATERIAL (STUCCO/SIDING) AT GROUND LEVEL.
- FINISH FLOOR ELEVATIONS ARE TAKEN AT DOOR THRESHOLD (EXTERIOR).

EASEMENT NOTE

A CURRENT TITLE REPORT FOR THE SUBJECT PROPERTY HAS NOT BEEN EXAMINED BY LEA & BRAZE ENGINEERING, INC. EASEMENTS OF RECORD MAY EXIST THAT ARE NOT SHOWN ON THIS MAP. EASEMENTS SHOWN PER ADJOINING SUBDIVISIONS.



KEY MAP
1" = 75'

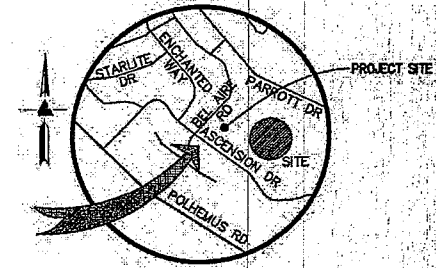
OWNER'S INFORMATION

OWNER:
BEL AIRE HEIGHTS, LLC
1700 SOUTH EL CAMINO REAL, #100
SAN MATEO, CA 94402

REFERENCES

- TOPOGRAPHIC SURVEY BY LEA & BRAZE ENGINEERING, INC. ENTITLED: "TOPOGRAPHIC SURVEY" BEL AIRE DRIVE SAN MATEO, CA DATED: 8-20-17 JOB# 2161284
- SOIL REPORT BY MICHELICCI & ASSOCIATES, INC. ENTITLED: "GEOTECHNICAL & ENGINEERING GEOLOGIC INVESTIGATION" PROPOSED ASCENSION HEIGHTS SUBDIVISION SAN MATEO COUNTY, CA JOB# 01-3188 DATE: DECEMBER 16, 2002 REVISED DATE: DECEMBER 5, 2013 SUPPLEMENT TO REPORT: AUGUST 24, 2018

THE CONTRACTOR SHALL REFER TO THE ABOVE NOTED SURVEY AND PLAN, AND SHALL VERIFY BOTH EXISTING AND PROPOSED ITEMS ACCORDING TO THEM.



VICINITY MAP
NO SCALE

ABBREVIATIONS

AB	AGGREGATE BASE	LF	LINEAR FEET
AC	ASPHALT CONCRETE	MAX	MAXIMUM
ACC	ACCESSIBLE	MH	MANHOLE
AD	AREA DRAIN	MIN	MINIMUM
BC	BEGINNING OF CURVE	MON	MONUMENT
B & D	BEARING & DISTANCE	MRO	METERED RELEASE OUTLET
BM	BENCHMARK	(N)	NEW
BW/FG	BOTTOM OF WALL/FINISH	NTS	NOT TO SCALE
CB	CATCH BASIN	O.C.	ON CENTER
C & G	CURB AND GUTTER	O/	OVER
E	CENTER LINE	(PA)	PLANTING AREA
OPP	CORRUGATED PLASTIC PIPE (SMOOTH INTERIOR)	PED	PEDESTRIAN
CO	CLEANOUT	PIV	POST INDICATOR VALVE
COTO	CLEANOUT TO GRADE	PS	PUBLIC SERVICES EASEMENT
CONC	CONCRETE	P	PROPERTY LINE
CONST	CONSTRUCT or -TION	PP	PUBLIC UTILITY EASEMENT
CONC COR	CONCRETE CORNER	PVC	POLYVINYL CHLORIDE
CY	CUBIC YARD	R	RADIUS
D	DIAMETER	RCP	REINFORCED CONCRETE PIPE
DI	DROP INLET	RM	RIM ELEVATION
DIP	DUCTILE IRON PIPE	RW	RAINWATER
EA	EACH	R/W	RIGHT OF WAY
EC	END OF CURVE	S	SLOPE
EG	EXISTING GRADE	S.A.D.	SEE ARCHITECTURAL DRAWINGS
EL	ELEVATIONS	SAN	SANITARY
EQ	EDGE OF PAVEMENT	SD	STORM DRAIN
EQ	EQUIPMENT	SDMH	STORM DRAIN MANHOLE
EW	EACH WAY	SHT	SHEET
(E)	EXISTING	S.L.D.	SEE LANDSCAPE DRAWINGS
FC	FACE OF CURB	SS	SPECIFICATION
FF	FINISHED FLOOR	SSCO	SANITARY SEWER CLEANOUT
FG	FINISHED GRADE	SSMH	SANITARY SEWER MANHOLE
FH	FIRE HYDRANT	ST	STATION
FL	FLOW LINE	STA	STANDARD
FS	FINISHED SURFACE	STD	STRUCTURAL
G	GAGE OR GAUGE	STR	STRUCTURE
GA	GRADE BREAK	T	TEMPORARY
CB	GRADE BREAK	TC	TOP OF CURB
HDPE	HIGH DENSITY CORRUGATED POLYETHYLENE PIPE	TP	TOP OF PAVEMENT
HORIZ	HORIZONTAL	TP	TOP OF PAVEMENT
HI PT	HIGH POINT	TW/FG	TOP OF WALL/FINISH GRADE
H&T	HUB & TACK	TYP	TYPICAL
ID	INSIDE DIAMETER	VC	VERTICAL CURVE
INV	INVERT ELEVATION	VCP	VERTICAL CLAY PIPE
JB	JUNCTION BOX	VERT	VERTICAL
JT	JOINT TRENCH	W/	WITH
JP	JOINT UTILITY POLE	W.M.	WATER METER
L	LENGTH	WM	WELDED WIRE FABRIC
LDGC	LANDING	WVF	WELDED WIRE FABRIC

SANITARY SEWER DISTRICT NOTE:
SANITARY SEWER CONNECTION AND TESTING MUST BE MADE IN THE PRESENCE OF A SEWER DISTRICT REPRESENTATIVE.
THE SEWER DISTRICT OFFICE SHALL BE CONTACTED (850-363-4100) TO SCHEDULE INSPECTIONS. INSPECTIONS MUST BE SCHEDULED A MINIMUM OF ONE WORKING DAY PRIOR TO THE INSPECTION. NO INSPECTIONS SHALL OCCUR ON FRIDAYS, WEEKENDS OR HOLIDAYS UNLESS SPECIAL ARRANGEMENTS ARE MADE WITH THE SEWER DISTRICT.
A VIDEO INSPECTION OF THE SEWER MAIN EXTENSION (MANHOLE TO MANHOLE) SHALL BE PERFORMED BY THE APPLICANT AND SUBMITTED TO THE SEWER DISTRICT FOR REVIEW AFTER THE MAINLINE EXTENSION AND LATERAL CONNECTION HAVE BEEN MADE. THE VIDEO INSPECTION SHALL BE PERFORMED IN ACCORDANCE WITH THE REQUIREMENTS DESCRIBED IN THE SPECIAL PROVISIONS FOR CLOSED CIRCUIT TELEVISION INSPECTION OF SANITARY SEWER MAINS (A COPY CAN BE OBTAINED FROM OUR WEBSITE AT [HTTP://PUBLICWORKS.SMGCOV.ORG/SEWER-SERVICES](http://PUBLICWORKS.SMGCOV.ORG/SEWER-SERVICES)). THE SEWER DISTRICT WILL REVIEW THE VIDEO INSPECTION TO DETERMINE WHETHER THE WORK PERFORMED IS ACCEPTABLE. ALL UNACCEPTABLE WORK SHALL BE CORRECTED TO THE SEWER DISTRICT'S SATISFACTION AT THE APPLICANT'S EXPENSE.

EXISTING LIGHT POLE PROTECTION NOTE:
CARE MUST BE TAKEN TO PROTECT THE EXISTING LIGHT POLE AND/OR ANY WIRING ASSOCIATED WITH IT DURING CONSTRUCTION. ANY DAMAGES TO THE LIGHTING DISTRICT FACILITIES DURING THE CONSTRUCTION SHALL BE REPAIRED BY THE CONTRACTOR PER THE LIGHTING DISTRICT STANDARD DETAILS AND AT THE CONTRACTOR'S EXPENSE. THE LIGHTING DISTRICT MUST BE NOTIFIED OF ANY DAMAGES TO THE LIGHTING FACILITIES AND ANY REPAIR MUST BE INSPECTED BY A LIGHTING DISTRICT REPRESENTATIVE.

NOTE:
FOR CONSTRUCTION STAKING SCHEDULING OR QUOTATIONS PLEASE CONTACT ALEX ABAYA AT LEA & BRAZE ENGINEERING (510)887-4086 EXT 116. aabaya@leabraze.com



LEA & BRAZE ENGINEERING, INC.
CIVIL ENGINEERS & LAND SURVEYORS
SACRAMENTO REGION
3017 DOUGLAS BLVD., # 300
ROSEVILLE, CA 95661
(916) 887-4086
(916) 887-4086
WWW.LEABRAZE.COM

**BEL AIRE HEIGHTS
SUBDIVISION - OFFSITE
SAN MATEO, CALIFORNIA**
(UNINCORPORATED) SAN MATEO COUNTY

CRYSTAL SPRINGS COUNTY SANITATION DISTRICT
DATE: 9/13/2018
MARK Y. CHOW
PRINCIPAL CIVIL ENGINEER
SAN MATEO COUNTY DEPARTMENT OF PUBLIC WORKS
P.E. C55429 EXP. 12/31/2021

Sanco Pipelines, Inc.
727 University Ave.
Los Gatos, CA 95032

As Built
306 785
4/20/26
mf

SHEET INDEX

C-1.0	TITLE SHEET
C-1.1	OVERALL SITE PLAN
C-2.0	BEL AIRE ROAD PLAN & PROFILE
C-2.1	BEL AIRE ROAD PLAN & PROFILE
C-2.2	BEL AIRE ROAD PLAN & PROFILE
C-2.3	BEL AIRE ROAD PLAN & PROFILE
C-2.4	ASCENSION DRIVE PLAN & PROFILE
C-2.5	CROSSING AT POLHEMUS ROAD & ASCENSION DRIVE PLAN & PROFILE
C-3.0	BEL AIRE ROAD PAVING, SIGNAGE, & STRIPING PLAN
C-3.1	BEL AIRE ROAD PAVING, SIGNAGE, & STRIPING PLAN
C-4.0	DETAILS
ER-1	EROSION CONTROL PLAN
ER-2	EROSION CONTROL DETAILS
BMP	BEST MANAGEMENT PRACTICES

TITLE SHEET

3	PLAN CHECK REV. 08-17-21	RM
2	PLAN CHECK REV. 05-18-21	RM
1	PLAN CHECK REV. 10-23-19	RM/AG

REVISIONS BY:
JOB NO.: 2161285
DATE: 03-26-18
SCALE: AS NOTED
DESIGN BY: RC
DRAWN BY: ATL

SHEET NO.:
C-10
1 OF 13 SHEETS



LEA & BRAZE ENGINEERING, INC.
 CIVIL ENGINEERS & LAND SURVEYORS
 BAY AREA REGION
 2495 INDUSTRIAL PARK WEST
 WINDO, CALIFORNIA 94445
 (415) 887-3019 (F) (415) 887-7335
 WWW.LEABRAZE.COM

**BEL AIRE HEIGHTS
 SUBDIVISION - OFFSITE
 SAN MATEO, CALIFORNIA**
 (UNINCORPORATED) SAN MATEO COUNTY

OVERALL SITE PLAN

NO.	REVISIONS	BY
1	PLAN CHECK REV. 08-17-21	RM
2	PLAN CHECK REV. 05-18-21	RM
3	PLAN CHECK REV. 10-23-19	RM/AC

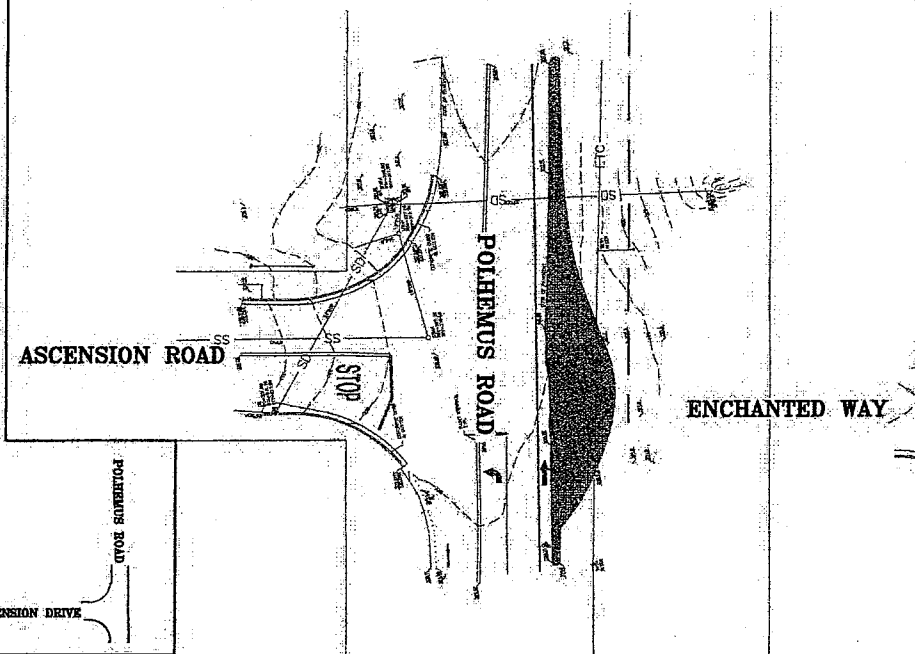
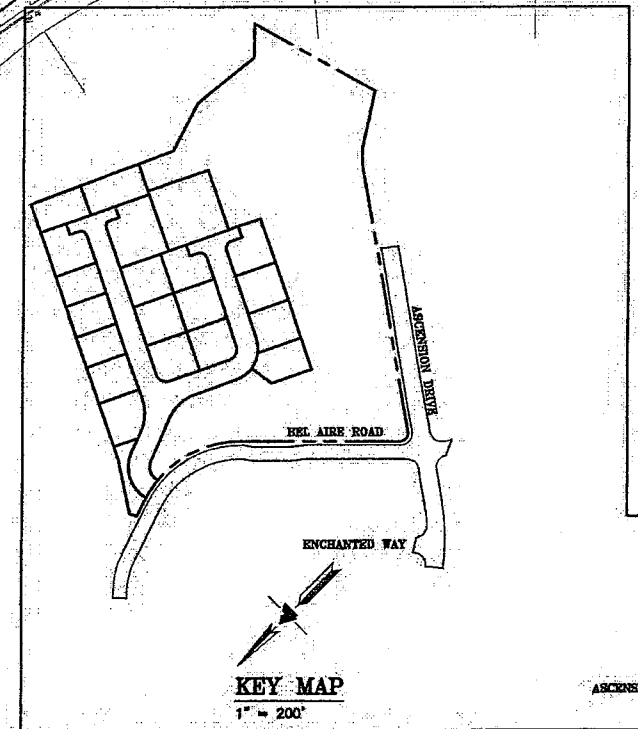
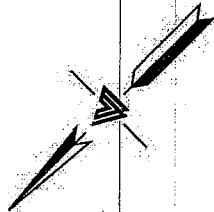
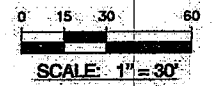
JOB NO: 2161285
 DATE: 03-26-18
 SCALE: AS SHOWN
 DESIGN BY: RC
 DRAWN BY: ATL
 SHEET NO:

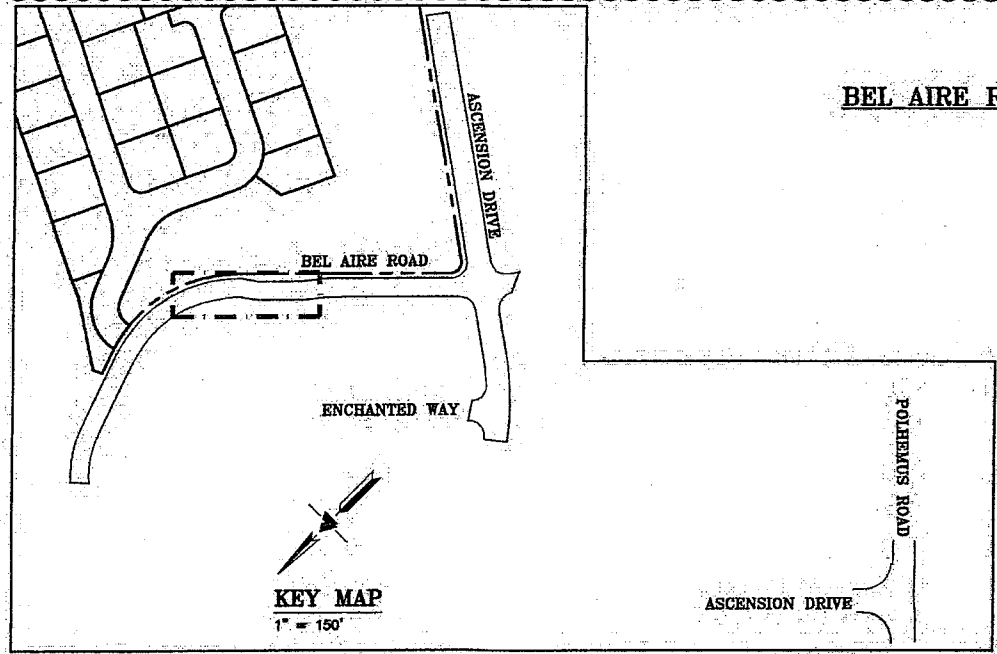
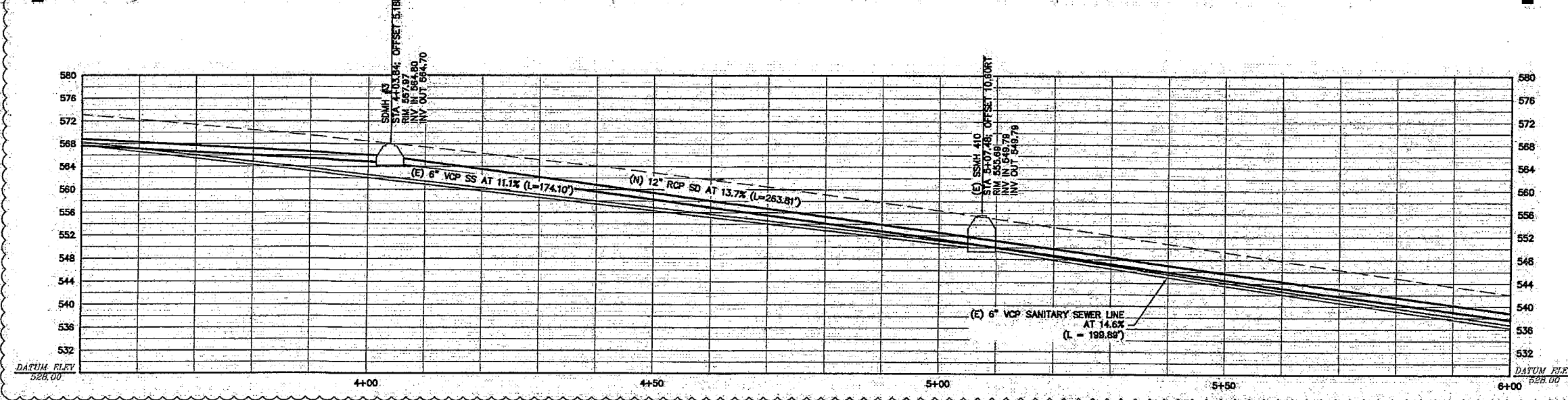
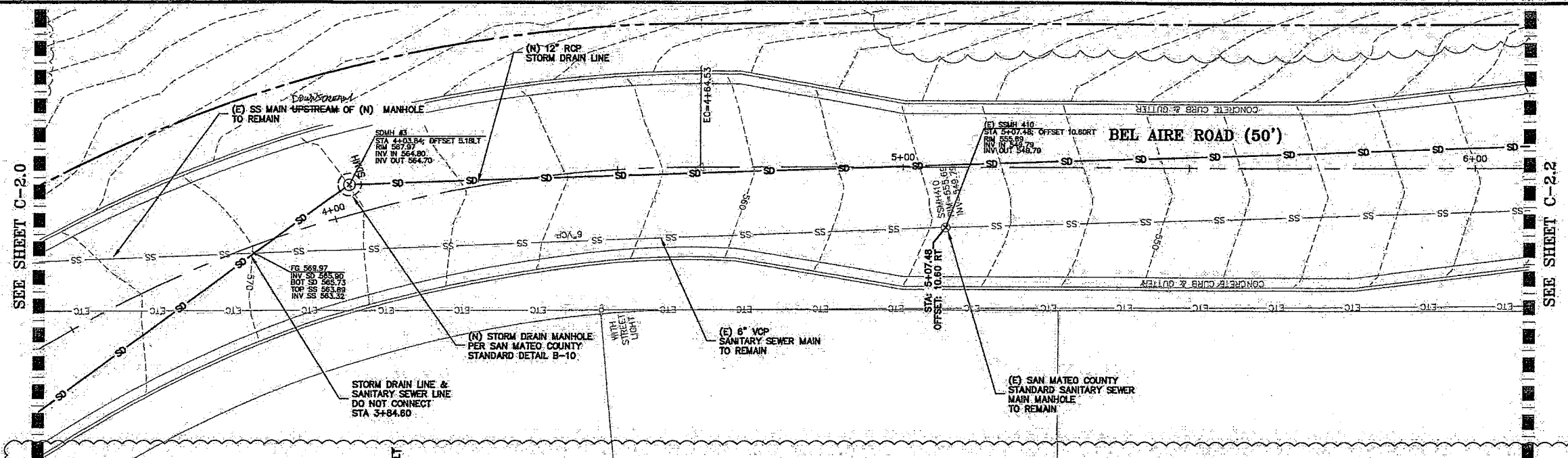
C-11
 2 OF 13 SHEETS

Sanco Pipelines, Inc.
 727 University Ave.
 Los Gatos, CA 95032

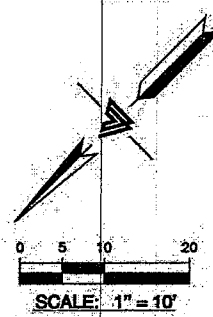
As Buits
 Job 785
 4/20/26
[Signature]

CRYSTAL SPRINGS COUNTY SANITATION DISTRICT
[Signature]
 DATE





BEL AIRE ROAD - STA 3+50 TO 6+00 PROFILE
SCALE: 1" = 10' HORIZ & VERT



CRYSTAL SPRINGS COUNTY SANITATION DISTRICT
9/15/2021 DATE
MARK Y. CHOW
PRINCIPAL CIVIL ENGINEER
SAN MATEO COUNTY DEPARTMENT OF PUBLIC WORKS
P.E. C89429 EXP. 12/31/2021



LEA & BRAZE ENGINEERING, INC.
CIVIL ENGINEERS - LAND SURVEYORS
BAY AREA REGION
2465 INDUSTRIAL PARK WEST
SACRAMENTO REGION
3017 DOUGLAS BLVD., # 300
SACRAMENTO, CA 95834
(P) (510) 887-4066
(F) (510) 887-3018
(T) (916) 787-7383
WWW.LEABRAZE.COM

**BEL AIRE HEIGHTS
SUBDIVISION - OFFSITE
SAN MATEO, CALIFORNIA**
(UNINCORPORATED) SAN MATEO COUNTY

**BEL AIRE ROAD
PLAN & PROFILE**

Sanco Pipelines, Inc.
727 University Ave.
Los Gatos, CA 95032

As Built
506 785
4/20/26
ml

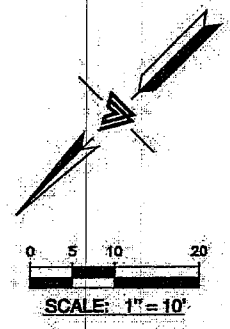
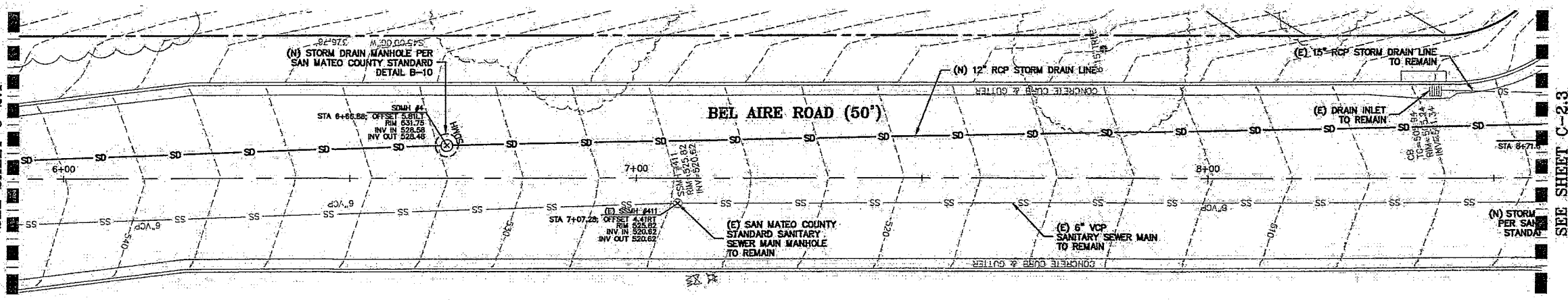
NOTE:
FOR CONSTRUCTION STAKING
SCHEDULING OR QUOTATIONS
PLEASE CONTACT ALEX ABAYA
AT LEA & BRAZE ENGINEERING
(510)887-4066 EXT 116.
aabaya@leabraze.com

NO.	REVISIONS	BY
5	PLANCHER REV. 08-17-21	RM
4	PLANCHER REV. 05-15-21	RM
1	PLANCHER REV. 10-23-19	RM/AG

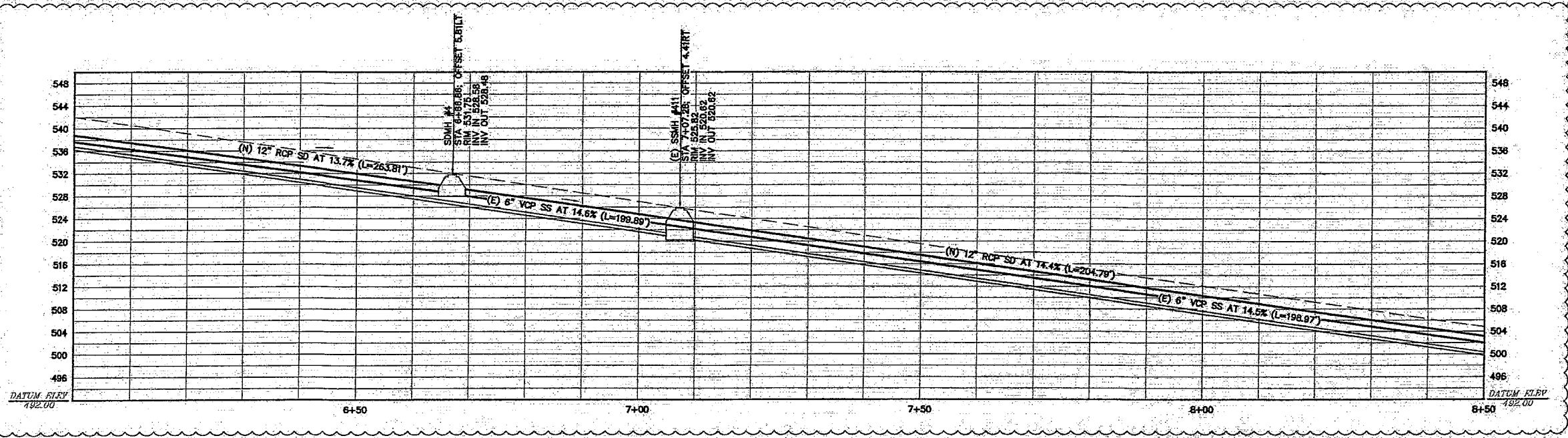
JOB NO.: 2161285
DATE: 03-26-18
SCALE: AS NOTED
DESIGN BY: RC
DRAWN BY: AIL
SHEET NO.:

C-2.1
4 OF 13 SHEETS

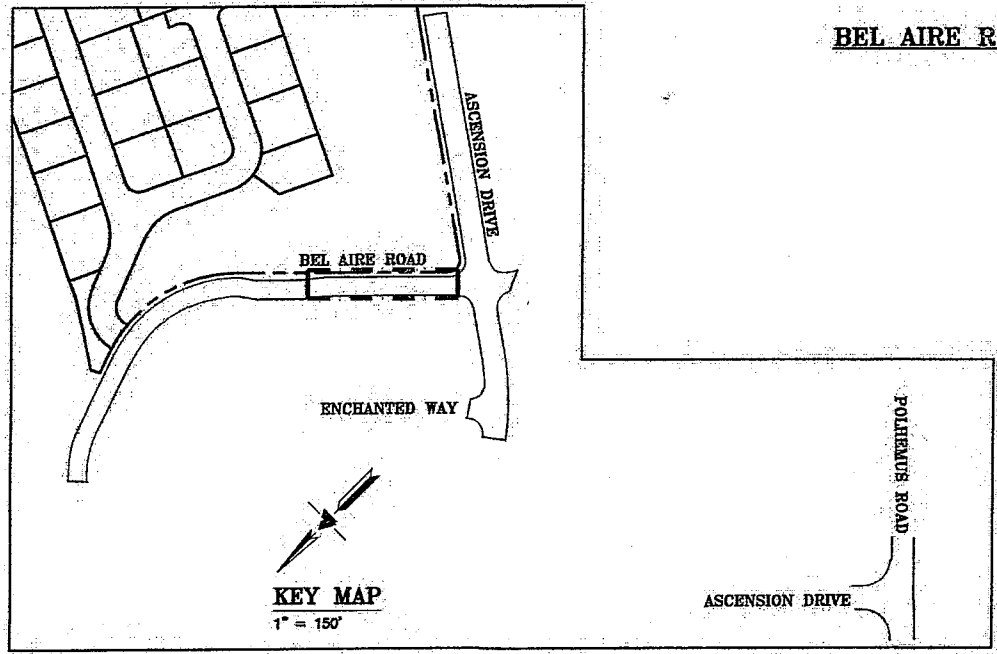
SEE SHEET C-2.1



SEE SHEET C-2.3



BEL AIRE ROAD - STA 6+00 TO 8+50 PROFILE
SCALE: 1" = 10' HORIZ & VERT



CITY OF SAN MATEO
SANTA MONICA DISTRICT
DEPARTMENT OF PUBLIC WORKS
P.E. 054498 EXP. 12/31/2021
DATE: 4/20/26

BEL AIRE HEIGHTS
SUBDIVISION - OFFSITE
SAN MATEO, CALIFORNIA
(UNINCORPORATED) SAN MATEO COUNTY

BEL AIRE ROAD
PLAN & PROFILE

Banco Pipelines, Inc.
727 University Ave.
Los Gatos, CA 95032
As Built
Job 785
4/20/26
ml

NOTE:
FOR CONSTRUCTION STAKING
SCHEDULING OR QUOTATIONS
PLEASE CONTACT ALEX ABAYA
AT LEA & BRAZE ENGINEERING
(510)887-4086 EXT 116
aabaya@leabraze.com

1	FLANCKEN REV. 08-17-21	RM
2	FLANCKEN REV. 08-18-21	RM
3	FLANCKEN REV. 10-23-19	RM/AG
REVISIONS:		BY:
JOB NO: 2161285		
DATE: 03-25-18		
SCALE: AS NOTED		
DESIGN BY: RC		
DRAWN BY: ATL		
SHEET NO:		



LEA & BRAZE ENGINEERING, INC.
CIVIL ENGINEERS & LAND SURVEYORS
SACRAMENTO REGION
1000 W. BROADWAY WEST
ROSEVILLE, CA 95678
HAYWARD, CALIFORNIA 94545
(P) (916) 887-1338
(F) (916) 887-3019
WWW.LEABRAZE.COM

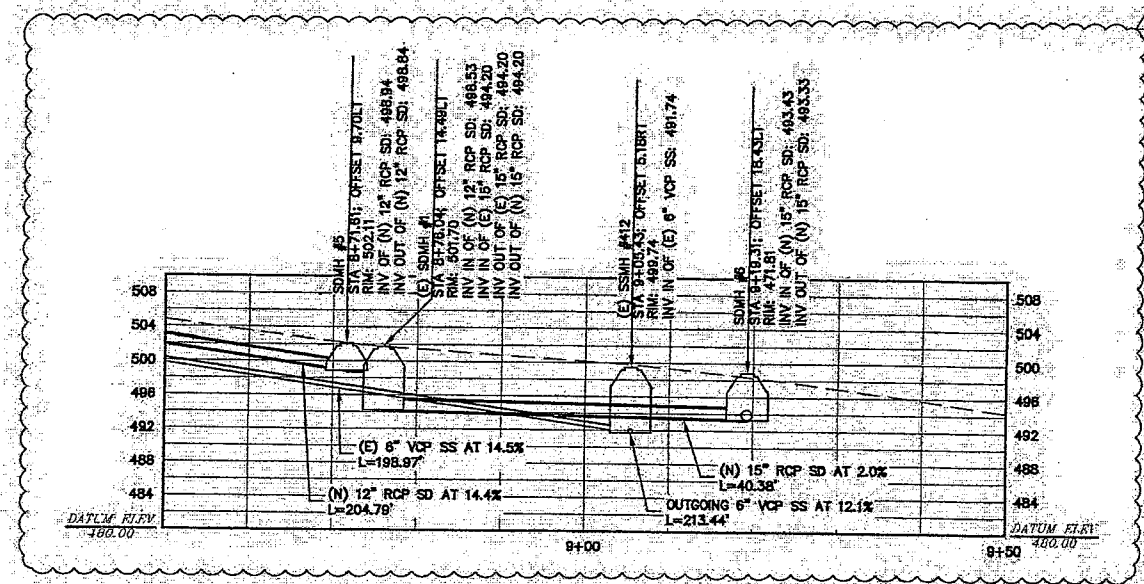
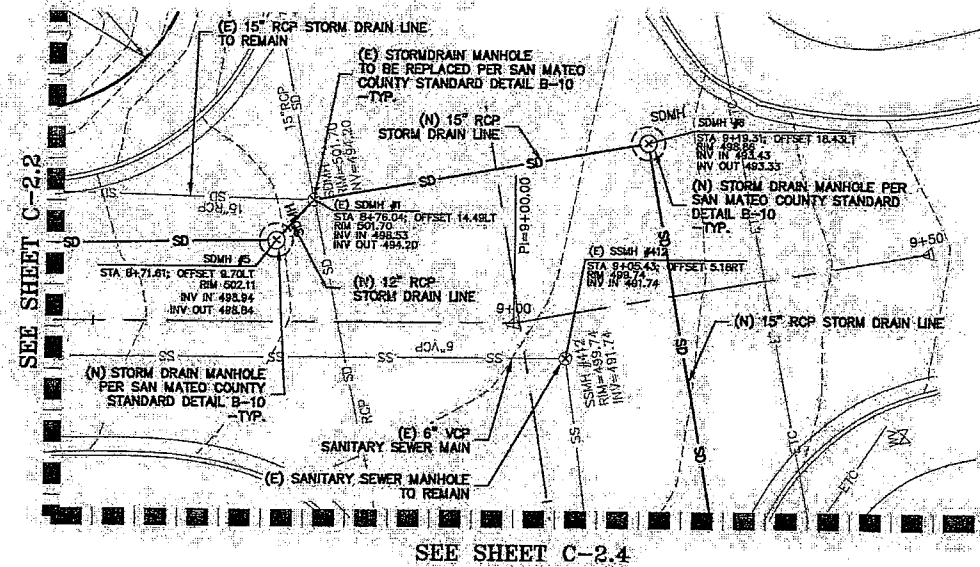
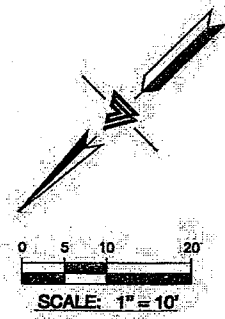


LEA & BRAZE ENGINEERING, INC.
 CIVIL ENGINEERS & LAND SURVEYORS
 SACRAMENTO REGION
 307 DOUGLAS BLVD., 3RD FLOOR
 HAYWARD, CALIFORNIA 94541
 (P) (510) 887-4286 (F) (510) 887-3353
 WWW.LEA-BRAZE.COM

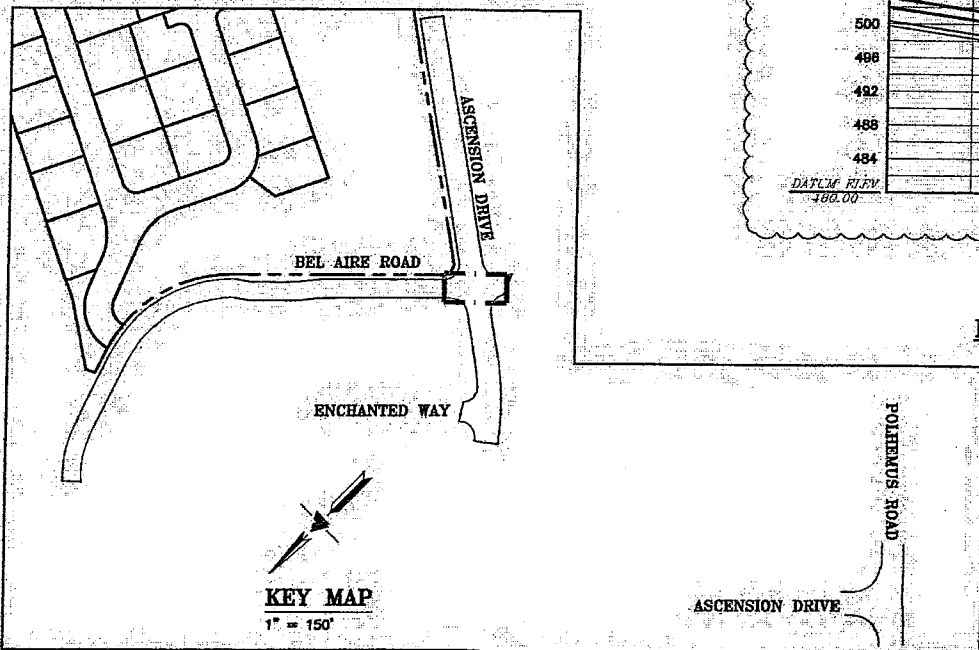
**BEL AIRE HEIGHTS
 SUBDIVISION - OFFSITE
 SAN MATEO, CALIFORNIA**
 (UNINCORPORATED) SAN MATEO COUNTY

**BEL AIRE ROAD
 PLAN & PROFILE**

CRYSTAL SPRINGS COUNTY SANITATION DISTRICT
 DATE: 4/23/2021
 PROJECT ENGINEER
 SAN MATEO COUNTY DEPARTMENT OF PUBLIC WORKS
 P.E. C594208 EXP. 12/31/2021



BEL AIRE ROAD - STA 8+50 TO 9+50 PROFILE
 SCALE: 1" = 10' HORIZ & VERT



Sanco Pipelines, Inc.
 727 University Ave.
 Los Gatos, CA 95032

As Built
 Job 785
 4/20/26
[Signature]

NOTE:
 FOR CONSTRUCTION STAKING,
 SCHEDULING OR QUOTATIONS
 PLEASE CONTACT ALEX ABAYA
 AT LEA & BRAZE ENGINEERING
 (510)887-4086 EXT 116.
 aabaya@leabraze.com

REVISIONS	BY
PLANCHER REV. 08-17-21	RM
PLANCHER REV. 05-18-21	RM
PLANCHER REV. 10-23-19	RM/AC

JOB NO: 2161285
 DATE: 05-28-18
 SCALE: AS NOTED
 DESIGN BY: RC
 DRAWN BY: ATL
 SHEET NO:

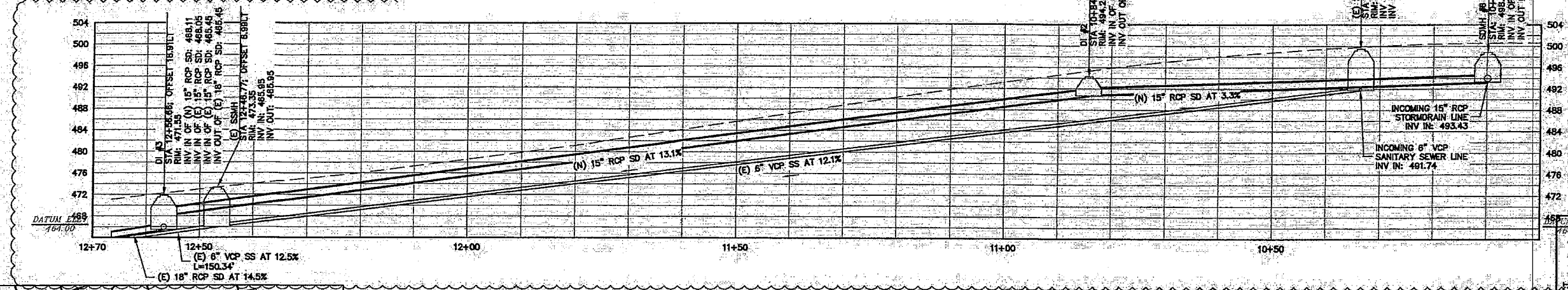
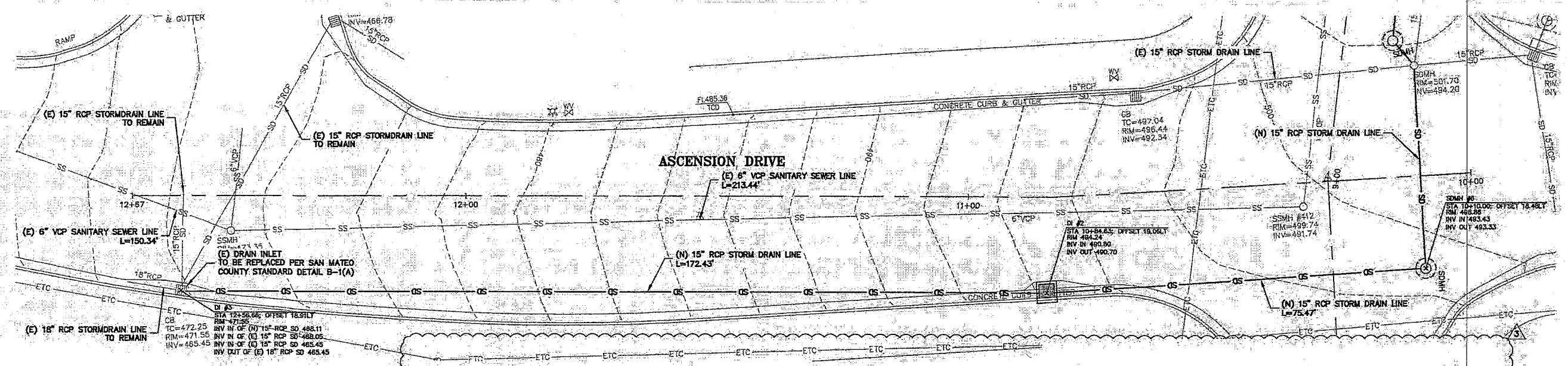
C-2.3



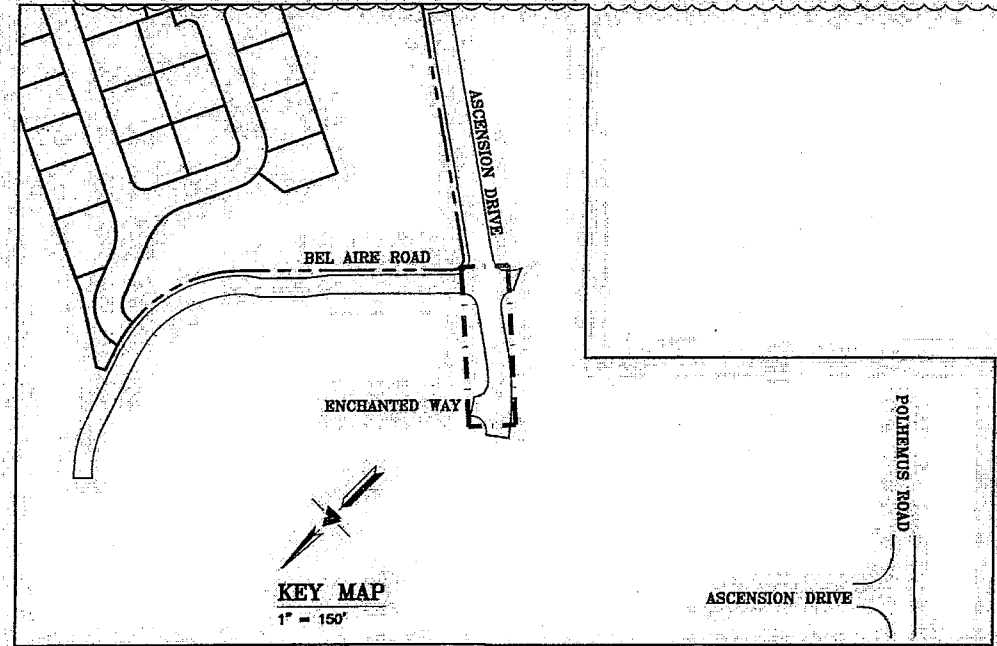
LEA & BRAZE ENGINEERING, INC.
 CIVIL ENGINEERS - LAND SURVEYORS
 2495 INDUSTRIAL PARK WEST
 HAYWARD, CALIFORNIA 94545
 (510) 887-4086 (P) (916) 968-1335
 (510) 887-3019 (F) (916) 977-7583
 WWW.LEABRAZE.COM

**BEL AIRE HEIGHTS
 SUBDIVISION - OFFSITE
 SAN MATEO, CALIFORNIA**
 (UNINCORPORATED) SAN MATEO COUNTY

**ASCENSION DRIVE
 PLAN & PROFILE**



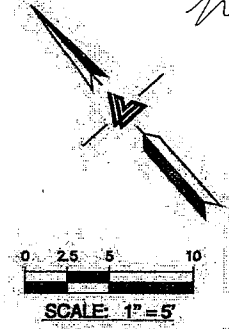
PV ALIGNMENT 2 PROFILE
 SCALE: 1" = 10' HORIZ & VERT



Senco Pipelines, Inc.
 727 University Ave.
 Los Gatos, CA 95032

As Built
 Job 785
 4/20/26
 ml

CRYSTAL SPRINGS COUNTY SANITATION DISTRICT
 9/13/2021 DATE
 MARK Y. CHOW
 PRINCIPAL CIVIL ENGINEER
 SAN MATEO COUNTY DEPARTMENT OF PUBLIC WORKS
 P.E. CS9429 EXP. 12/31/2021

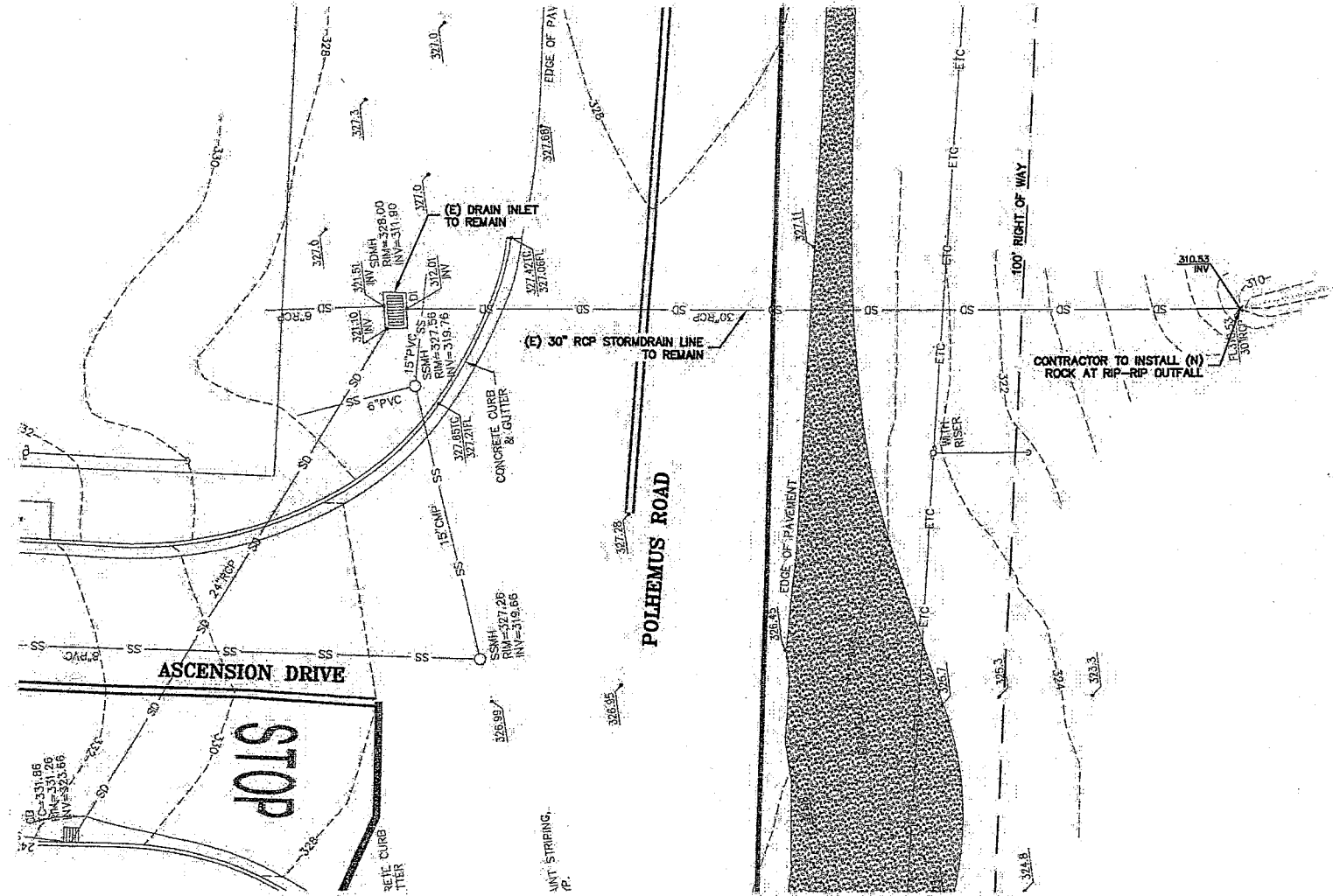
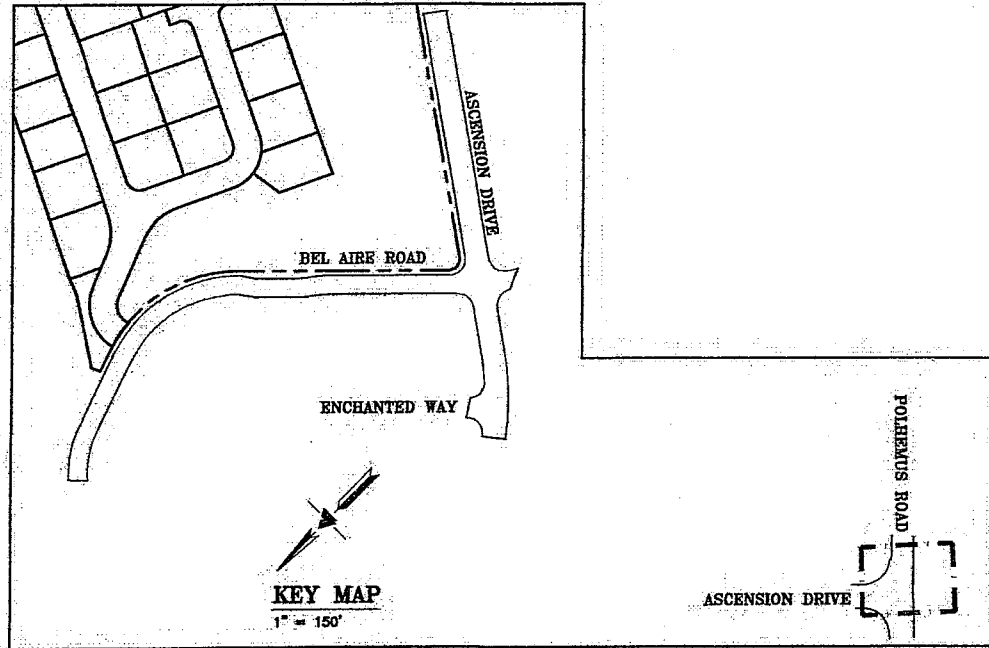
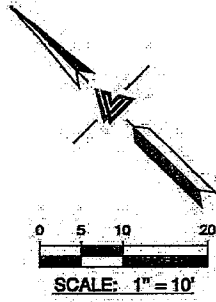


NOTE:
 FOR CONSTRUCTION STAKING
 SCHEDULING OR QUOTATIONS
 PLEASE CONTACT ALEX ABAYA
 AT LEA & BRAZE ENGINEERING
 (510) 887-4086 EXT 116
 aabaya@leabraze.com

REVISIONS	BY
1	RM
2	RM
3	RM/AG

JOB NO.: 2161285
 DATE: 03-26-18
 SCALE: AS NOTED
 DESIGN BY: RC
 DRAWN BY: ATL
 SHEET NO:

C-2.4
 7 OF 13 SHEETS



CRYSTAL SPRINGS COUNTY SANITATION DISTRICT
 9/13/2018
 DATE
 MARK C. CHOW
 CIVIL ENGINEER
 SAN MATEO COUNTY DEPARTMENT OF PUBLIC WORKS
 P.E. 059429 EXP. 12/31/2021

Sanco Pipelines, Inc.
 727 University Ave.
 Los Gatos, CA 95032
 As Bults
 Job 785
 4/20/26
 ml

NOTE:
 FOR CONSTRUCTION STAKING
 SCHEDULING OR QUOTATIONS
 PLEASE CONTACT ALEX ABAYA
 AT LEA & BRAZE ENGINEERING
 (510)887-4086 EXT 116.
 aabaya@leabraze.com

3	PLANCHECK REV. 03-17-21	RM
2	PLANCHECK REV. 05-18-21	RM
1	PLANCHECK REV. 10-23-19	RM/AG
REVISIONS		BY:
JOB NO:	2761285	
DATE:	03-26-18	
SCALE:	AS NOTED	
DESIGN BY:	RC	
DRAWN BY:	ATL	
SHEET NO:	C-2.5	
8 OF 13 SHEETS		

**CROSSING AT
 POLHEMUS ROAD &
 ASCENSION DRIVE
 PLAN & PROFILE**

**BEL AIRE HEIGHTS
 SUBDIVISION - OFFSITE
 SAN MATEO, CALIFORNIA**
 (UNINCORPORATED) SAN MATEO COUNTY

LEA & BRAZE ENGINEERING, INC.
 CIVIL ENGINEERS LAND SURVEYORS
 2485 INDUSTRIAL WAY WEST
 HAYWARD, CALIFORNIA 94545
 (510) 887-4086 (P) (510) 887-4086 (F) (510) 887-3019
 WWW.LEABRAZE.COM





LEA & BRAZE ENGINEERING, INC.
 CIVIL ENGINEERS - LAND SURVEYORS
 SACRAMENTO REGION
 3000 BOULEVARD # 300
 HAYWARD, CALIFORNIA 94545
 (P) (510) 887-4086 (F) (510) 887-3019
 WWW.LEABRAZE.COM

**BEL AIRE HEIGHTS
 SUBDIVISION - OFFSITE
 SAN MATEO, CALIFORNIA**
 (UNINCORPORATED) SAN MATEO COUNTY

DETAILS

9/23/2026
 DATE
 Mark J. ...
 PRINCIPAL CIVIL ENGINEER
 SAN MATEO COUNTY DEPARTMENT OF PUBLIC WORKS
 P.E. CS9429 EXP. 12/31/2021

Sanco Pipelines, Inc.
 727 University Ave
 Los Gatos, CA 95032

As Built
 Job 785
 4/20/26
 ml

3	PLANCHER REV. 08-17-21	RM
3	PLANCHER REV. 05-18-21	RM
3	PLANCHER REV. 10-23-19	RM/AG
	REVISIONS BY	
	JOB NO: 2161285	
	DATE: 03-26-18	
	SCALE: AS NOTED	
	DESIGN BY: RC	
	DRAWN BY: ATL	
	SHEET NO:	

C-4.0
 11 OF 13 SHEETS

SAN MATEO COUNTY DEPARTMENT OF PUBLIC WORKS
 REDWOOD CITY CALIFORNIA
 SCALE: NONE
 DATE: 6/25
 REVISED: 6/25

DRAWN BY: A.G.M.
 CHECK BY: R.L.F.
 APPROVED BY: N.R.C.

TYPE GO INLET ON SAG

TYPE GO INLET ON GRADE

QUANTITY OF PCC FOR APRONS (CUBIC YARDS)		
INLET	ON GRADE	IN SAG
GO	0.3843	0.3890

APRON DETAILS
 NO SCALE
 B-1 (A)

SAN MATEO COUNTY DEPARTMENT OF PUBLIC WORKS
 REDWOOD CITY CALIFORNIA
 SCALE: NONE
 DATE: 6/25
 REVISED: 4/97

DRAWN BY: A.G.M.
 CHECK BY: R.L.F.
 APPROVED BY: N.R.C.

SECTION G-G INLET TYPE GO

TABLE B	Normal Curb Height	Curb Batter	b
A1-6	6"	1 1/2"	12 1/2"
A1-8	8"	2"	12"
B	6"	4"	10"
Dike	6"	3"	

CATCH BASIN QUANTITY TABLE

GO	H=3'-0" TO 8'-0" (T=6")	H=8'-1" TO 20'-0" (T=8")	ADDITIONAL P.C.C. PER FT. (C.Y.)
	1.24	0.245	3.39

TABLE BASED ON 8" FLOOR SLAB, NO DEDUCTION FOR PIPE OPENINGS, AND CURB TYPE GIVING HIGHEST QUANTITY OF CONCRETE. NO DEDUCTIONS OR ADJUSTMENTS ARE TO BE MADE TO THESE QUANTITIES BECAUSE OF PIPE OPENINGS, DIFFERENT FLOOR ALTERNATIVES OR DIFFERENT CURB TYPE.

B-1

SAN MATEO COUNTY DEPARTMENT OF PUBLIC WORKS
 REDWOOD CITY CALIFORNIA
 SCALE: NONE
 DATE: 6/25
 REVISED: 7/97

DRAWN BY: M.L.
 CHECK BY: R.D.
 APPROVED BY: N.R.C.

SANITARY SEWER MANHOLE COVER FRAME AND STRAP DETAIL
 C-2

SANITARY SEWER FLUSHING INLET COVER

SAN MATEO COUNTY DEPARTMENT OF PUBLIC WORKS
 REDWOOD CITY CALIFORNIA
 SCALE: NONE
 DATE: 6/25
 REVISED: 7/97

DRAWN BY: D.P.
 CHECK BY: B.G.
 APPROVED BY: N.R.C.

SANITARY SEWER MANHOLE DETAIL
 C-1

COUNTY OF SAN MATEO DEPARTMENT OF PUBLIC WORKS
 REDWOOD CITY CALIFORNIA
 SCALE: NONE
 DATE: 6/25
 REVISED: 9/29

DRAWN BY: T.D.
 CHECK BY: R.L.F.
 APPROVED BY: L.C.R.

SANITARY SEWER MANHOLE DETAIL
 C-1

SAN MATEO COUNTY DEPARTMENT OF PUBLIC WORKS
 REDWOOD CITY CALIFORNIA
 SCALE: NONE
 DATE: 6/25
 REVISED: 7/97

DRAWN BY: A.G.M.
 CHECK BY: R.L.F.
 APPROVED BY: N.R.C.

TYPE A (IN ROADWAY)

TYPE B (OUTSIDE ROADWAY)

SEVE SIZE	% PASSING SIEVES
3"	100
NO.4	35-100
NO.30	20-100

STANDARD TRENCH BACKFILL AND BEDDING DETAIL STORM DRAIN PIPES
 B-15

SAN MATEO COUNTY DEPARTMENT OF PUBLIC WORKS
 REDWOOD CITY CALIFORNIA
 SCALE: NONE
 DATE: 6/25
 REVISED: 7/97

DRAWN BY: B.M.A.
 CHECK BY: R.L.F.
 APPROVED BY: N.R.C.

STANDARD STORM DRAIN MANHOLE
 NO SCALE
 B-10

SAN MATEO COUNTY DEPARTMENT OF PUBLIC WORKS
 REDWOOD CITY CALIFORNIA
 SCALE: NONE
 DATE: 6/25
 REVISED: 7/97

DRAWN BY: M.A.
 CHECK BY: B.G.
 APPROVED BY: N.R.C.

TYPE A (IN ROADWAY)

TYPE B (OUTSIDE ROADWAY)

STANDARD TRENCH BACKFILL AND BEDDING DETAIL FOR PVC SEWER PIPE
 C-7