

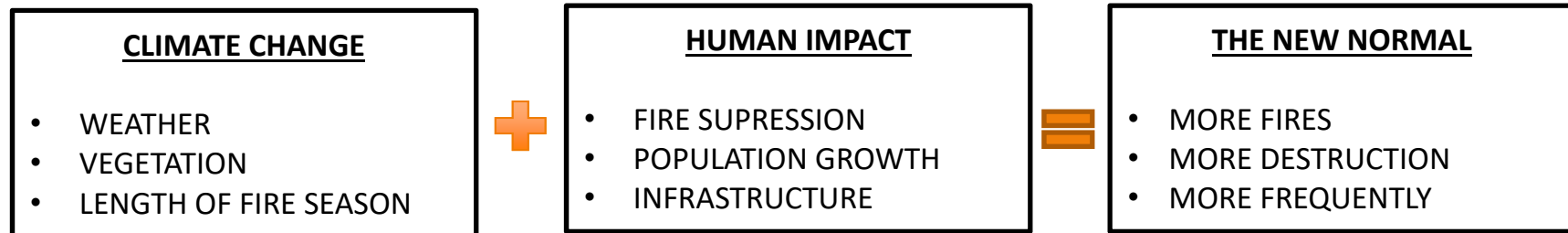


REPORT ON WILDFIRE PREVENTION ACTIVITY // JULY 2020





THE NEW NORMAL



- This is a complex problem
- There is not a “one-single” solution
- The problem requires a combination of mitigation, preparedness, prevention and response activities
- Multiple agencies and organizations taking actions to prevent and respond to this issue





CURRENT ACTIVITIES





MITIGATION: VEGETATION MANAGEMENT

- Multiple fuel reduction projects throughout the County
 - Fuel breaks
 - Prescribed burning
 - Thinning (chipping, burn piles)
 - Local roadside clearance projects



Agencies Involved in Vegetation Management: Local fire departments, CAL FIRE, San Mateo County Parks Department, San Mateo County Resource Conservation District, Mid Peninsula Open Space District, San Mateo County Fire Safe Council, South Skyline Fire Safe Council, many local Cities, and San Francisco Public Utility Commission.





MITIGATION: FIRE PREVENTION GRANTS

- 2019 Governor's 35 Priority Fuel Reduction Projects
 - #2 Kings Mountain Roadside Evacuation Project
 - #16 El Granada Quarry Park Fuel Break
- 2019-2020 CAL FIRE Forest Health Grant
 - San Mateo Resource Conservation District
 - \$2,553,334
- 2019-2020 CAL FIRE Prevention Grant
 - Woodside Fire Protection District San Mateo County Fire Safe Hazardous Fuels Program
 - \$389,500

Agencies Involved in Fire Prevention Grants: Local fire departments, CAL FIRE, San Mateo County Parks Department, San Mateo County Resource Conservation District, Mid Peninsula Open Space District, San Mateo County Fire Safe Council, South Skyline Fire Safe Council, and many local Cities.





MITIGATION: DEFENSIBLE SPACE REQUIREMENTS

- SB 190 (Dodd) Defensible Space for Local Jurisdictions
 - Model ordinance, WUI building standards training, guidance
- Several local jurisdictions have increased defensible space inspection programs
- State has introduced a defensible space self assessment tool



Agencies Involved in Defensible Space: Local fire departments, CAL FIRE, San Mateo County Fire Safe Council, South Skyline Fire Safe Council, and many local Cities.





MITIGATION: SMC FIRESAFE COUNCIL

- Organization that brings all stakeholders together
- Recent renewed interest and strong participation
- Successful in grant administration, chipper program and proving best practice information to member organizations





MITIGATION: WUI BUILDING CODES

- Chapter 7A of the California Building Code
- Applies to all homes built in the WUI
- Requires non-combustible construction material
- Updated as a part of the 2019 code cycle
- Some local ordinances are more restrictive





PREPAREDNESS: MAPPING

- Fine-Scale Vegetation Mapping LiDAR Mapping
- PSC CAD Mapping
- CAL FIRE FRAP Fire Hazard Severity Zone Mapping



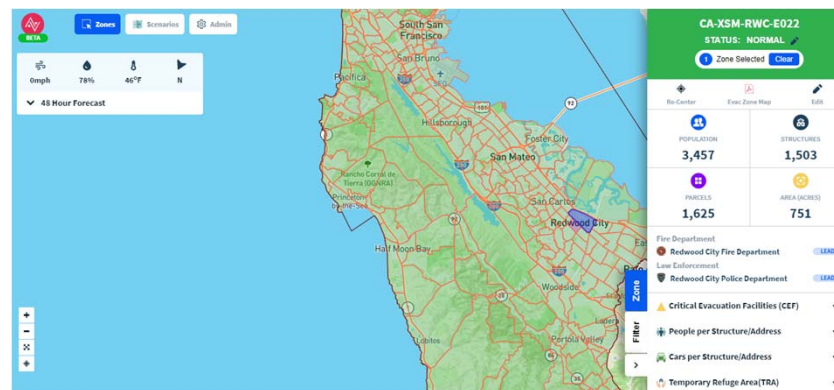
Agencies involved: Golden Gate National Recreation Area, Point Reyes National Seashore, California State Parks (Bay Area and Santa Cruz Districts), Marin County Parks, San Mateo County Parks, San Francisco Public Utilities Commission, San Mateo Resource Conservation District, Peninsula Open Space Trust, Midpeninsula Regional Open Space District, US Geological Survey, California Native Plant Society, County of Marin, County of San Mateo, San Mateo Fire Safe Council, San Mateo County Public Safety Communications and CAL FIRE.





PREPAREDNESS: EVACUATION PLANNING

- Standardized Countywide Evacuation Planning and Management Platform Zonehaven
- Technology and data driven with focus on public safety
- Real time information accessible to everyone
- Bringing together all fire, law, highway and dispatch agencies in the county





PREPAREDNESS: COMMUNITY EDUCATION & COLLABORATION

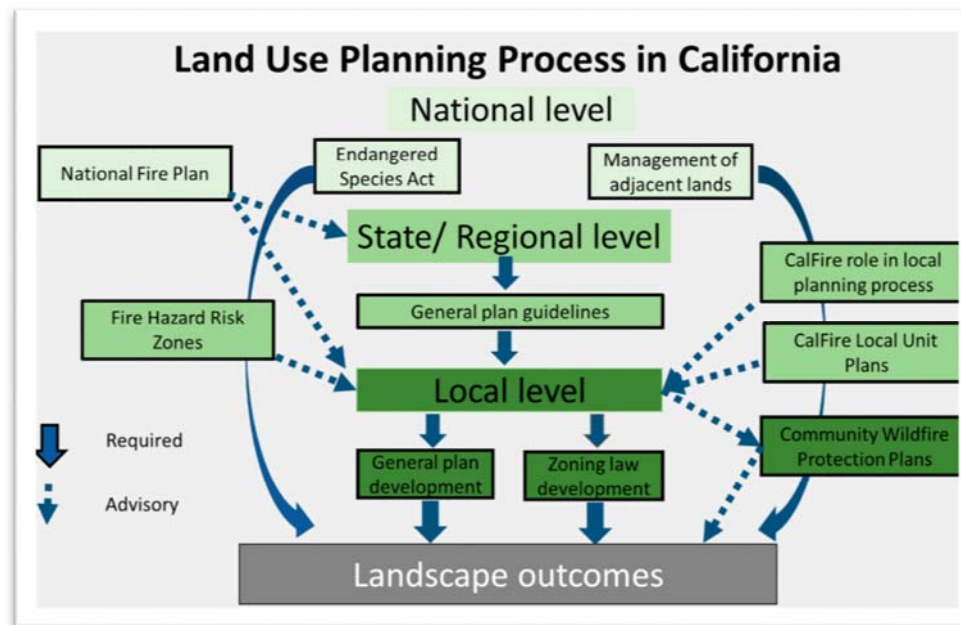
- Fire Safety Messaging Campaign (Office of Sustainability)
- First full-time dedicated fire PIO (San Mateo County FD)
- Local Town Hall Meetings
- Disaster Preparedness Day
- Climate Convening (Office of Sustainability)
- Peninsula Wildfire Safety Summit (Sierra Club)





PREPAREDNESS: LAND USE PLANNING

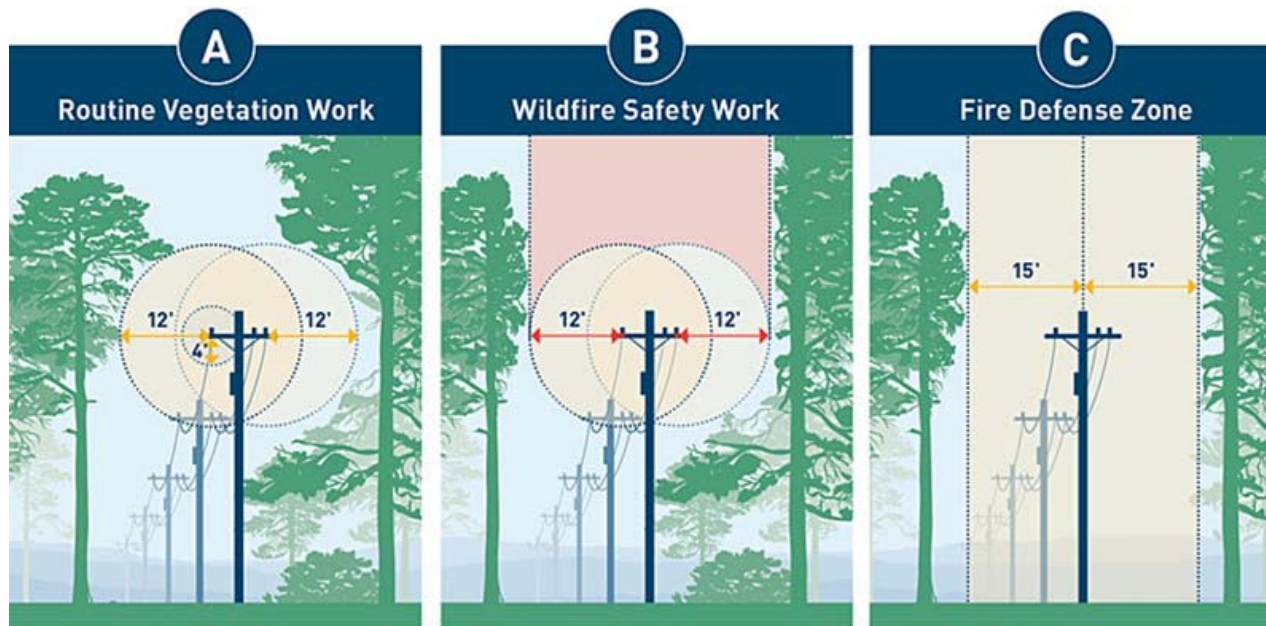
- Wildfire planning in Safety Element of General Plan
- Now required for all jurisdictions with WUI
- Based on fire hazard severity maps





PREPAREDNESS: INFRASTRUCTURE IMPROVEMENT & MAINTENANCE

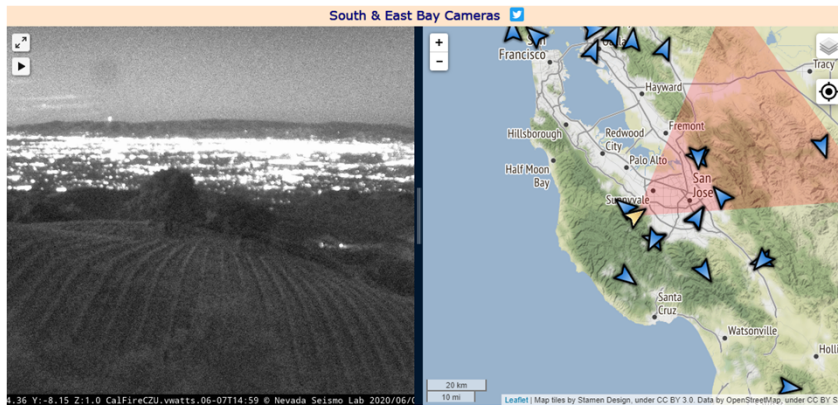
- Electrical power utilities performing line clearance
- New fire stations
- Upgrades to the first responder communication systems





RESPONSE: FIRE VERIFICATION CAMERAS

- AlertWildfire Cameras being installed at 3 Com. Colleges
- Allows for public and first responders to see the incident
- Are proven to be very valuable to send appropriate response





RESPONSE: EMERGENCY ALERTING

- SMCAAlert System Improvements
- Wireless Emergency Alert (WEA) enhancements





RESPONSE: 911 SYSTEM ENHANCEMENTS

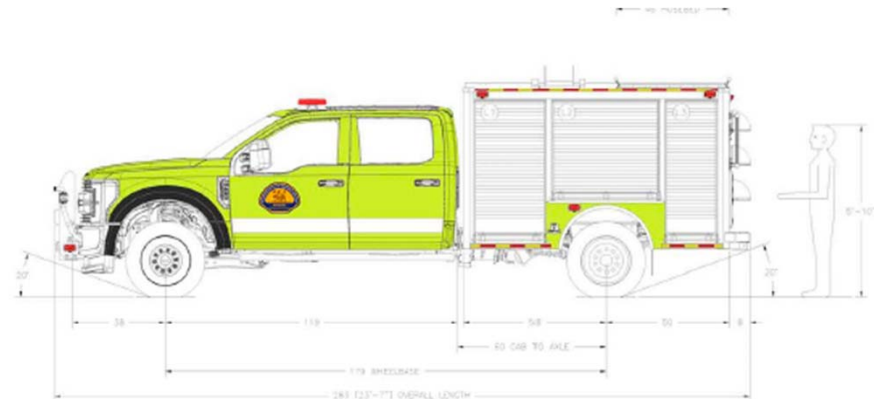
- Line 1





RESPONSE: INCREASED RESPONSE CAPACITY

- CAL FIRE Funded an additional Year-Round Wildland Fire Engine in San Mateo County
- Several local jurisdictions are exploring hosting CAL OES Type 6 wildland engines
- Measure K Apparatus Replacement includes a new wildland fire engine





QUESTIONS

