

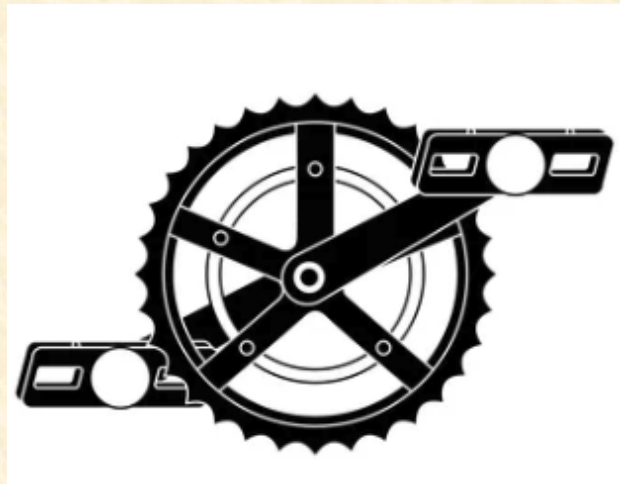


ADVOCATING
ELECTRIC MOUNTAIN BIKING

TOP 10 THINGS TO KNOW ABOUT THE E-BIKES AND E- MOTORCYCLES:

THE FIVE MINUTE VERSION

PEDAL-ASSIST (Classes 1 and 3)



THROTTLE (Class 2 and e-motos)



Throttle-Activated

750 watts / 20mph



Class 2 Electric Bicycles
("E-bikes")

Electric Motorcycles
("E-motos")

No. 1

Motor capable of more than 20 mph (or larger than 750 watts) = e-moto, not e-bike.

750 watts / 20mph



Class 2 Electric Bicycles
("E-bikes")



Electric Motorcycles
("E-motos")

E-bike or Illegal Motorcycle?



THE POWER GOAT V3

★★★★★ (36)

\$2,999.00 ~~\$3,150.00~~

🎁 Earn 2,999 Points when you buy this item.

Style/Color

ALL BLACK - PEDALS

ALL BLACK - NO PEDALS

BLACK GOLD FORKS - PEDALS

Custom 2,000W Rated Brushless Gearless Direct Drive Motor (3,000W Peak Power)

170NM of Torque

Max speed of between 40-50MPH (dependent on rider weight and terrain)

140lb=48MPH, 240lbs=43MPH

The top speed is set automatically to 20mph from the factory. To disable this feature, input the code "0000" in the bike settings.

<https://www.goatpowerbikes.com/collections/all-products/products/motor-goat>



Amyet



Freego



Macfox



Q life



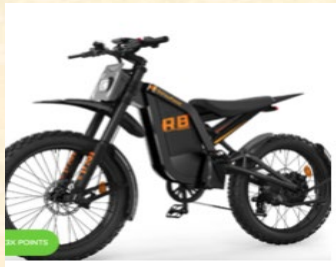
Riding Times



Super73



Ariel Rider



Isinwheel



Movcan



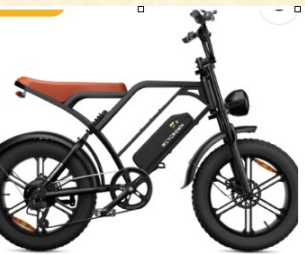
RAEV Bullet



Ridstar



Tuttio



Cycrun



Jasion



P-51



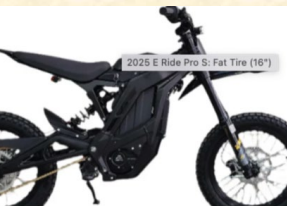
Ride1Up



Sedway



Zooz



E Ride Pro

No. 2

Motorcycles require motorcycle license, DMV plates, insurance, motorcycle helmet, turn signals, etc.



No. 3

Most throttle devices at local schools are motorcycles.





Students leave Sowers Middle School on e-bikes in Huntington Beach, CA, on Wednesday, February 4, 2026. (Photo by Jeff Gritchen, Orange County Register/SCNG)

No. 4

Faster vehicles crash more often, with more serious injuries.

$$KE = \frac{1}{2}mv^2$$

Kinetic Energy Formula

“Injury severity rises with the square of speed”

Youth active transportation user crashes within 2 miles of schools

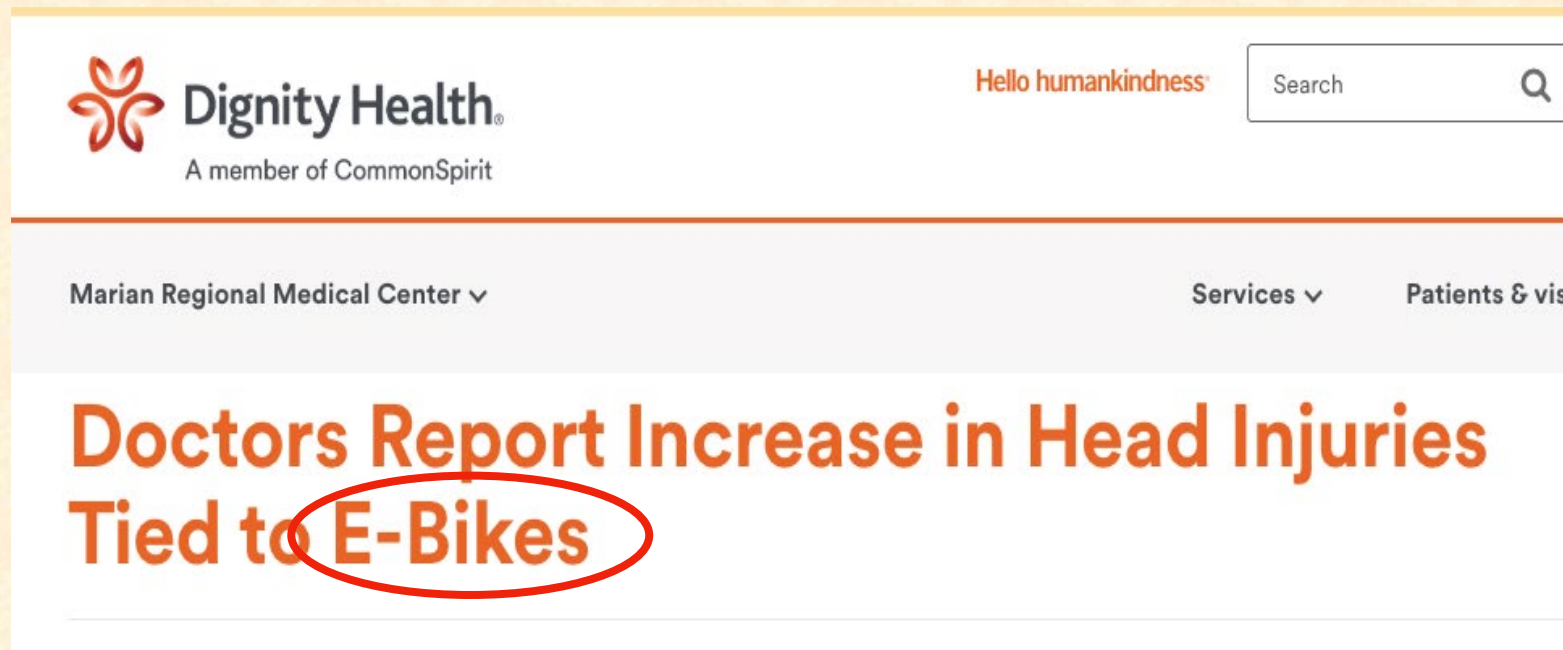
Unsafe speed was the top cause of crashes

Top 10 Primary Collision Factors



No. 5

No medical study separates e-bikes and e-motos. They treat both as e-bikes.



The screenshot shows the Dignity Health website header with the logo and tagline "A member of CommonSpirit". Below the header, there are navigation links for "Marian Regional Medical Center", "Services", and "Patients & visi". The main headline reads "Doctors Report Increase in Head Injuries Tied to E-Bikes", with "E-Bikes" circled in red.

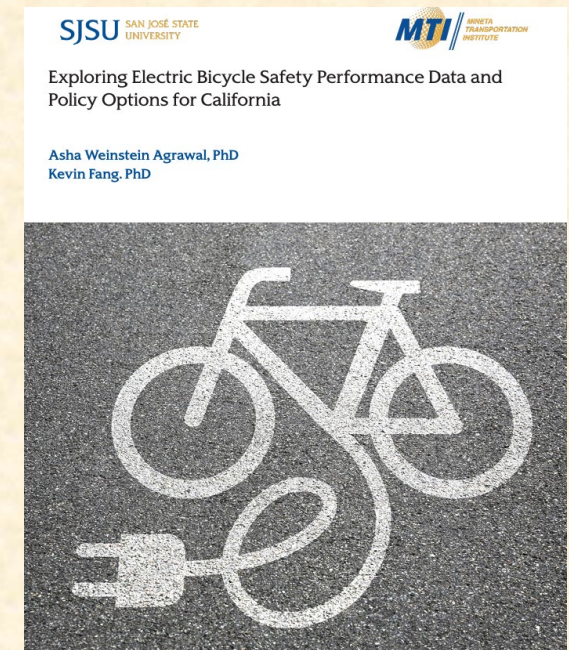
Dignity Health®
A member of CommonSpirit

Hello humankindness®

Search

Marian Regional Medical Center ▾ Services ▾ Patients & visi

Doctors Report Increase in Head Injuries Tied to E-Bikes



The cover of the report features the SJSU logo and the MTI logo. The title is "Exploring Electric Bicycle Safety Performance Data and Policy Options for California". The authors listed are Asha Weinstein Agrawal, PhD and Kevin Fang, PhD. The cover image shows a white silhouette of a bicycle on a dark, textured background, with a charging cable plugged into the bottom bracket area.

SJSU SAN JOSE STATE UNIVERSITY

MTI MOUNTAIN TRANSPORTATION INSTITUTE

Exploring Electric Bicycle Safety Performance Data and Policy Options for California

Asha Weinstein Agrawal, PhD
Kevin Fang, PhD

No. 6

According to medical studies, “e-bike” injuries are similar to motorcycle accidents. That’s because most so-called “e-bikes” are e-motos.

“Over the past year, our Trauma team has treated double the number of injuries to e-bike and e-scooter riders, as well as pedestrians hit by them,” said Dr. Russell Rodriguez, Chief Medical Officer and Emergency Room physician at John Muir Health. “The types of neurological and orthopedic injuries we are treating are much closer to those often associated with motorcycle accidents than non-motorized bicycle injuries. We want people to ride e-bikes and e-scooters safely and responsibly, not show up in our Trauma Center.”

No. 7

Experts now agree that the “e-bike” problem is an “e-moto” problem

**MTI Electric Bicycle Safety Study
Identifies Illegal, Over-Powered Devices
as Key Problem**

September 18, 2025

The E-Bike Problem is an E-Moto Problem

By: PeopleForBikes Staff



Solutions

No. 8

School/law enforcement partnership: Ban throttle devices at schools and enforce existing laws against e-motos



No. 9

State AG and County DAs: investigate and prosecute e-moto companies selling them as “e-bikes”



Instagram post featuring a statue of Lady Justice holding scales. The text reads: "FROM THE OFFICE OF STEPHEN M. WAGSTAFFE". Below the image is a red heart icon and the text: "Too Fast, Too Furious" Attorney General Rob Bonta, & California District Attorneys... A blue "Visit >" button is also present.



San Mateo Police Department's Post

San Mateo Police Department
April 14 at 12:01 PM · 🌐

Fresh from the San Mateo County District Attorney's Office:

🚩 "Too Fast, Too Furious" Attorney General Rob Bonta, & California District Attorneys including our own Stephen Wagstaffe, have issued a Consumer Alert on E-bike safety and their legal requirements:



CALIFORNIA DEPARTMENT OF JUSTICE
OFFICE OF THE ATTORNEY GENERAL

PRESS RELEASE

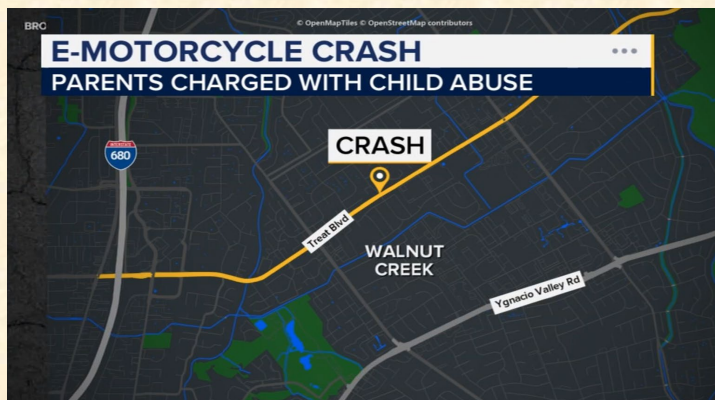
OAG.CA.GOV
Too Fast, Too Furious: Attorney General Bonta, California District Attorneys Issue Consumer Alert on E-Bike Safety, Legal Requirements

And prosecute parents for allowing their unlicensed children to operate illegal e-motos

Parents Charged with Child Abuse in e-Moto Crash in Walnut Creek

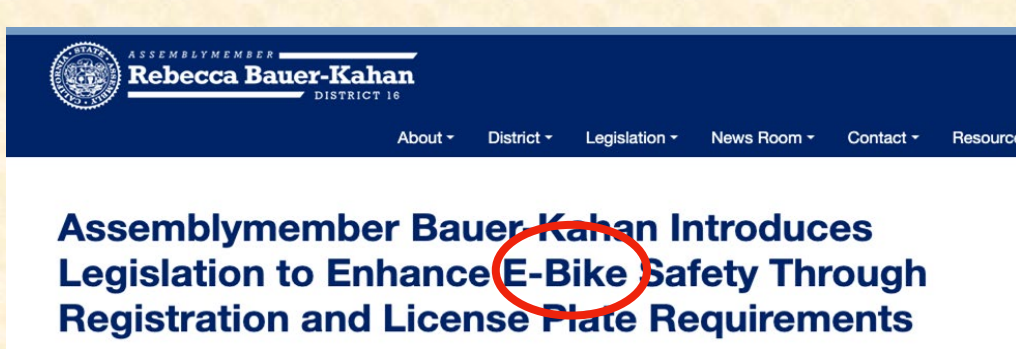
Contra Costa District Attorney's Office

Posted on March 26, 2026



No. 10

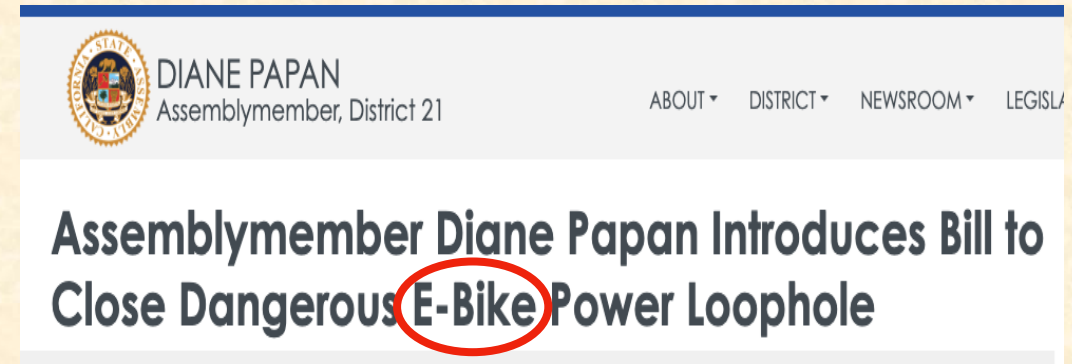
Sacramento: focus on facilitating enforcement against e-motos; resist “e-bike-lash”



ASSEMBLYMEMBER
Rebecca Bauer-Kahan
DISTRICT 16

About ▾ District ▾ Legislation ▾ News Room ▾ Contact ▾ Resource ▾

Assemblymember Bauer-Kahan Introduces Legislation to Enhance E-Bike Safety Through Registration and License Plate Requirements



DIANE PAPAN
Assemblymember, District 21

ABOUT ▾ DISTRICT ▾ NEWSROOM ▾ LEGISLATION ▾

Assemblymember Diane Papan Introduces Bill to Close Dangerous E-Bike Power Loophole

Assembly Transportation Committee analysis: “passing legislation targeting electric bicycles is unlikely to address the problems caused by illegal devices.”

Orange County Sheriff's Department, CA's Post



Orange County Sheriff's Department, CA  and OCSD - Lake Forest Police Service... 

April 17 at 11:12 AM · 

PRESS RELEASE: Suspect Arrested After E-Motorcycle Traffic Collision

On Thursday, April 16, 2026, shortly before 4 p.m., deputies were called to the area of Toledo Way and Ridge Route Drive for a pedestrian struck by an e-bike.

When the deputies arrived, they located an 81-year-old victim with life-threatening injuries. He was transported to the hospital and is currently in critical condition.

The suspect fled the area, and the "e-bike" was determined to be an electric motorcycle designed for off-highway use. Witnesses were able to give a description of the suspect, who was suspected of driving recklessly at the time of the crash. The suspect was quickly identified, and a search warrant was served at a nearby residence in the city of Lake Forest. A 14-year-old male was subsequently arrested and booked at Orange County Juvenile Hall for charges related to the incident.