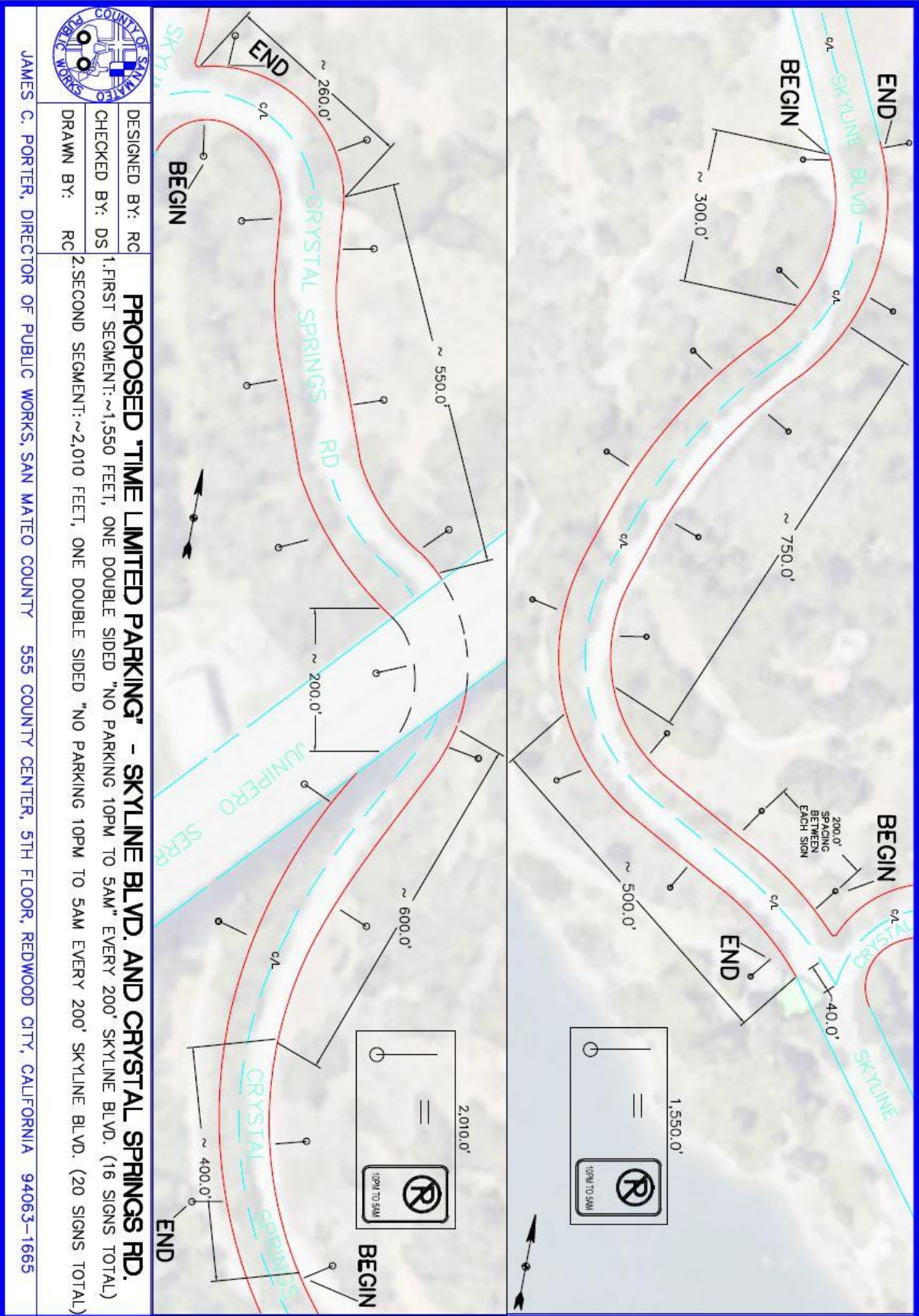


EXHIBIT B

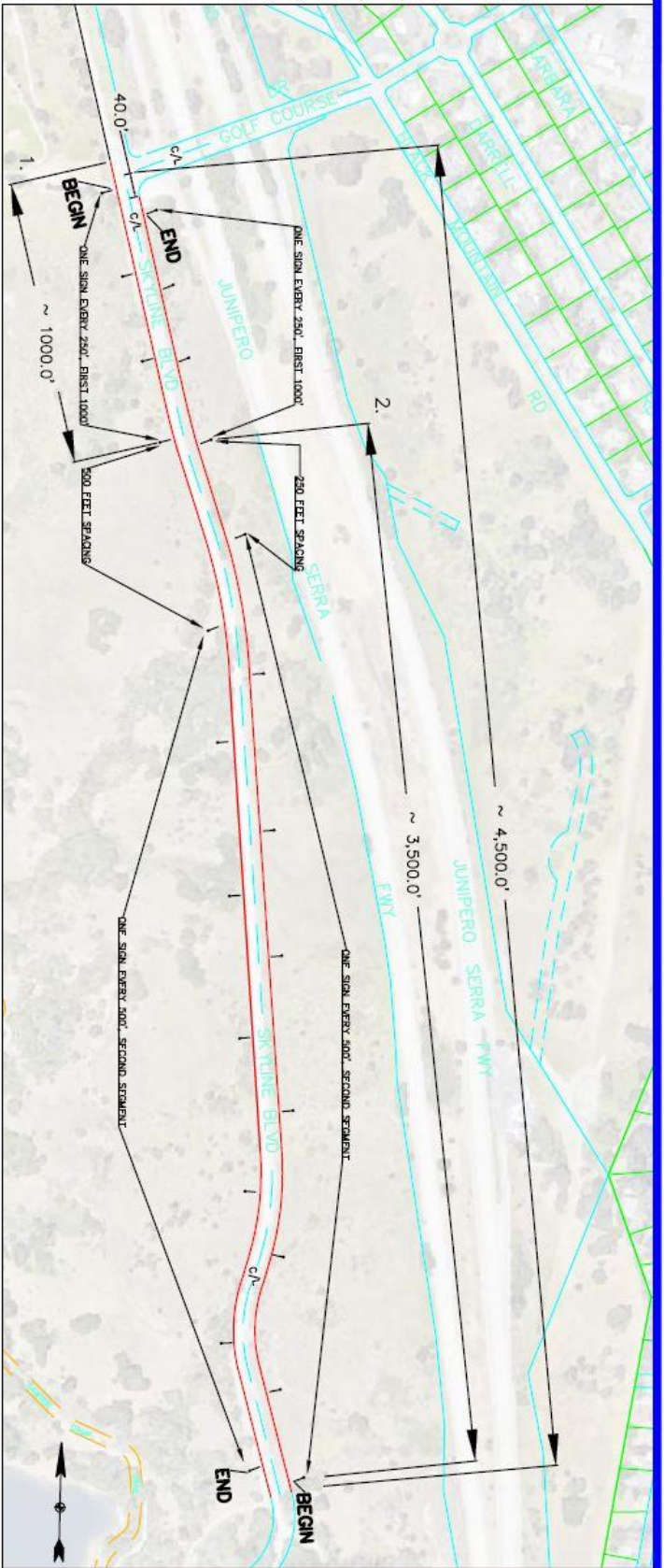


DESIGNED BY: RC
 CHECKED BY: DS
 DRAWN BY: RC

PROPOSED "TIME LIMITED PARKING" - SKYLINE BLVD. AND CRYSTAL SPRINGS RD.
 1. FIRST SEGMENT: ~1,550 FEET, ONE DOUBLE SIDED "NO PARKING 10PM TO 5AM" EVERY 200' SKYLINE BLVD. (16 SIGNS TOTAL)
 2. SECOND SEGMENT: ~2,010 FEET, ONE DOUBLE SIDED "NO PARKING 10PM TO 5AM EVERY 200' SKYLINE BLVD. (20 SIGNS TOTAL)

JAMES C. PORTER, DIRECTOR OF PUBLIC WORKS, SAN MATEO COUNTY 555 COUNTY CENTER, 5TH FLOOR, REDWOOD CITY, CALIFORNIA 94063-1665

EXHIBIT B



1. FIRST SEGMENT: ~1000 FEET, ONE DOUBLE SIDED "NO PARKING" SIGN BOTH SIDES EVERY 250 FEET, (8 SIGNS TOTAL).
2. SECOND SEGMENT: ~3,500 FEET, ONE DOUBLE SIDED "NO PARKING" SIGN BOTH SIDES OF SKYLINE BOULEVARD, EVERY 500 FEET. (14 SIGNS TOTAL)



DESIGNED BY: RC
 CHECKED BY: DS
 DRAWN BY: RC

PROPOSED "NO PARKING" ZONE - SKYLINE BOULEVARD

JAMES C. PORTER, DIRECTOR OF PUBLIC WORKS
 SAN MATEO COUNTY

SCALE: AS SHOWN
 DATE: 11/27/2019

555 COUNTY CENTER, 5TH FLOOR
 REDWOOD CITY, CALIFORNIA 94063-1665