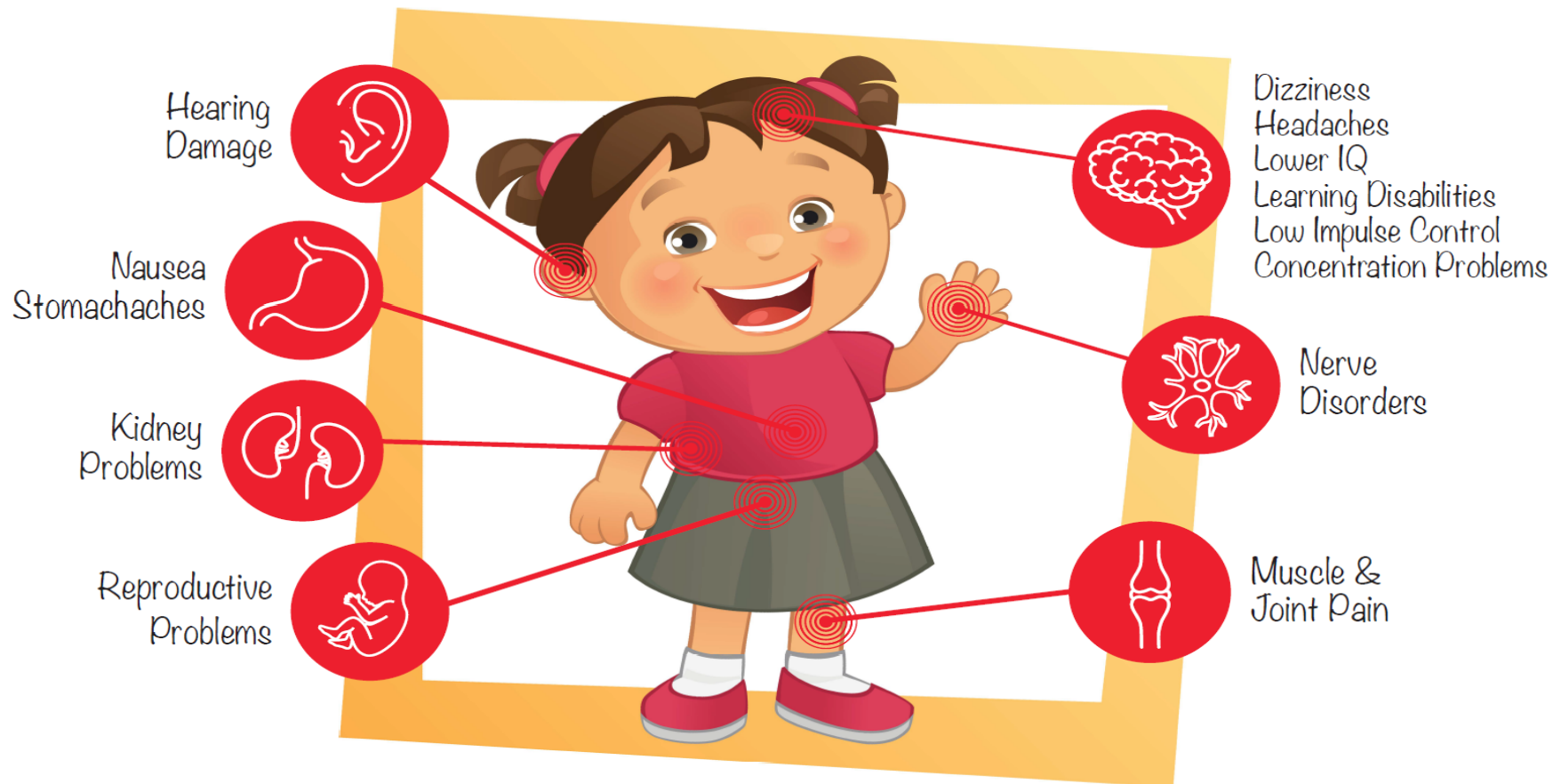


Childhood Lead Poisoning Prevention Program (CLPPP) and Unleaded Homes SMC



Fiona V. Sablo, RN, Senior Public Health Nurse

HOW LEAD AFFECTS CHILDREN



SOME EFFECTS MAY NOT SHOW UP



**SAN MATEO
COUNTY HEALTH**
All together better.

You can find lead...



in chipping paint



in remedies like azarcon, greta, or pay-loo-ah



on your hair, skin, shoes, and clothes after work



in bullets and fishing sinkers



in some toys



in some jewelry

<https://dtsc.ca.gov/toxics-in-products/lead-in-jewelry/>



in some candies

www.cdph.ca.gov/Programs/CEH/DFDCS/Pages/FDBPrograms/FoodSafetyProgram/LeadInCandy.aspx



in bare dirt



in traditional makeup, like kohl, surma, or sindoor



in some dishes and pots



in house dust



in foods and brightly-colored spices from outside the USA



**SAN MATEO
COUNTY HEALTH**
All together better.

San Mateo County CLPPP Services

- State Funded Program
- Partnership between FHS & EHS
- Serve children from 1 to 21 years old
- Comprehensive home visiting & case management



**SAN MATEO
COUNTY HEALTH**
All together better.

Unleaded Homes SMC

- 20 years, 10 Jurisdictions, 3 Paint Manufacturers
- \$11.7 million through 2025
- Contract with Rebuilding Together Peninsula
- Pilot completed



**SAN MATEO
COUNTY HEALTH**
All together better.

CLPPP and Unleaded Homes SMC



CLPPP and Unleaded Homes SMC Testimonial



Our happy recipient...soon to be Lead-Free



Unleaded Homes SMC

Now open for applications from residents
receiving CLPPP, Medi-Cal, and WIC
services

Questions?



**SAN MATEO
COUNTY HEALTH**
All together better.