

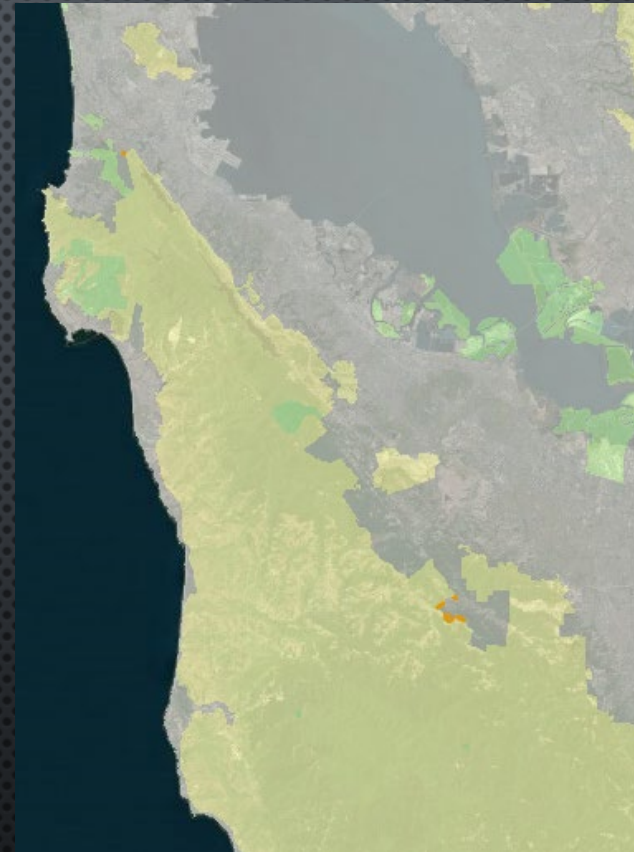
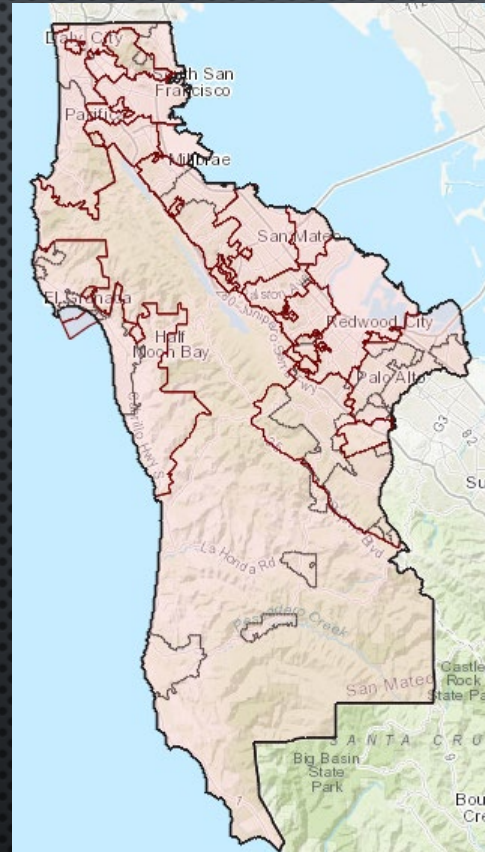


WILDFIRE PREPAREDNESS

San Mateo County

March 4, 2025

JURISDICTIONS



COUNTY OF SAN MATEO
FIRE DEPARTMENT



Prescribed Fire

- Over 457 acres of prescribed fire in San Mateo County in 2024
- We include local agencies to participate with RX (training, relations and operational readiness)
- Work closely with landowners (public and private) building relationships and trust





Vegetation Management / Fuel Reduction

Funded Wildfire Prevention Projects – Over \$6m

- Pacifica Public Education (\$25k)
- LIDAR Fine Fuels (\$75k)
- Upper Page Mill and Portola State Park ROW Haz Fuel Reduction (\$1 68k)
- La Honda Shaded Fuel Break (\$2.7m)
- Mills Canyon Fuel Reduction (\$140k)
- Belmont Hazardous Fuel Reduction (\$320k)
- Highway 35 Evacuation Route (\$2.67m)





Vegetation Management / Fuel Reduction

Forest Health – Over \$12.9m

- Linking Landscapes Pescadero County Park, 805 acres (\$5.5m)
- Forest Health County Parks, Butano, Huddart, Wunderlich and Girls Scout Camp, 834 acres (\$2.5m)
- Cal Forests CZU Post Fire Recovery, Phase 1, 3500 acres (\$4.9m)





Vegetation Management / Fuel Reduction

Impediments

- CEQA
- Lack of viable burn days (competition within BAAQMD) and variable weather
- Public perception and interference
- Coastal commission adds regulatory burdens (within the Coastal Zone) which adds time and cost to projects in these areas





Vegetation Management / Fuel Reduction

Direct Award – Over \$3.6m

- 2022 SMC CZU Priority Fuel Reduction, CEQA and fuel reduction along Highway 84, neighborhood chipping program in SM County (\$525k)
- Quarry Park Haz. Fuel and Inv. Species, eucalyptus removal (\$300k)
- Post Fire Health SMC, 447 acres restoration in Butano State Park (\$2.8m)
- Vegetation Management Equipment for San Mateo County Fire Department





FireSafe Council

- First FireSafe in California here in San Mateo County
- CAL FIRE funds a coordinator position for this program
- Responsible to bring all stakeholders together to collaborate on vegetation management and fuel reduction
- Works closely with many fire agencies and RCD
- Works closely on grant administration and chipping program





Glenwood Fire Center

- Two State-funded 15 person FF hand crews
- Establishing Glenwood Fire Center in La Honda (old Glenwood Camp)
- Over 5,000 hours of work on property already (defensible space, fuel red., etc.)
- Crews will be available for fire response and vegetation management work
- First time in history dedicated CAL FIRE hand crews in San Mateo County





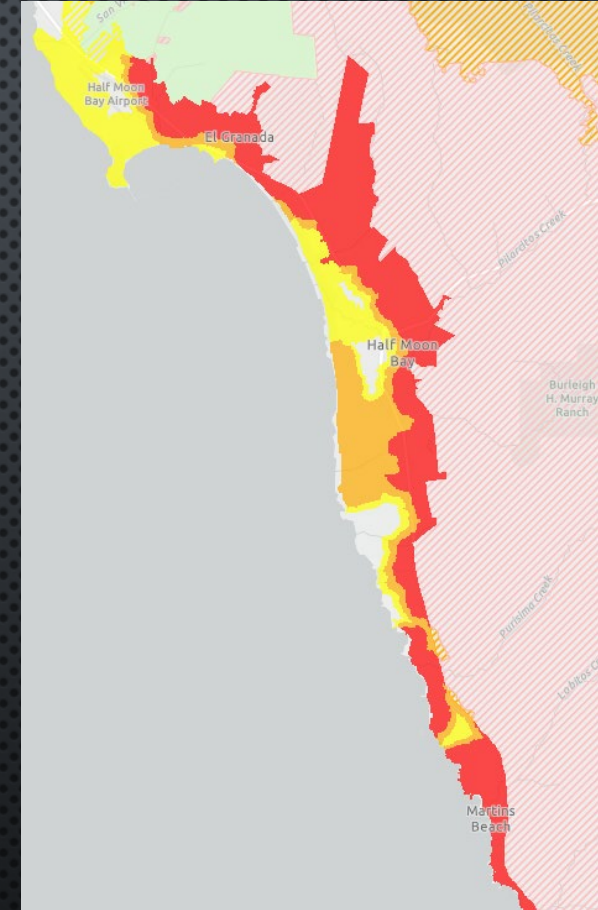
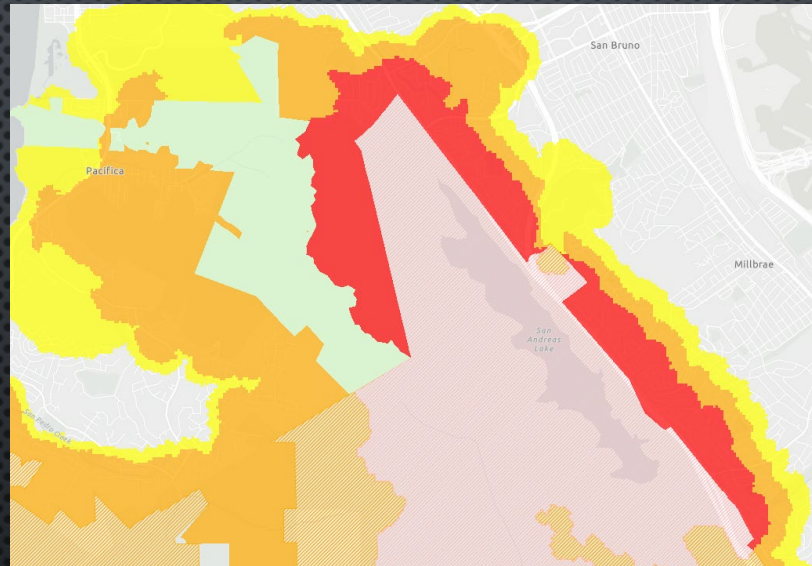
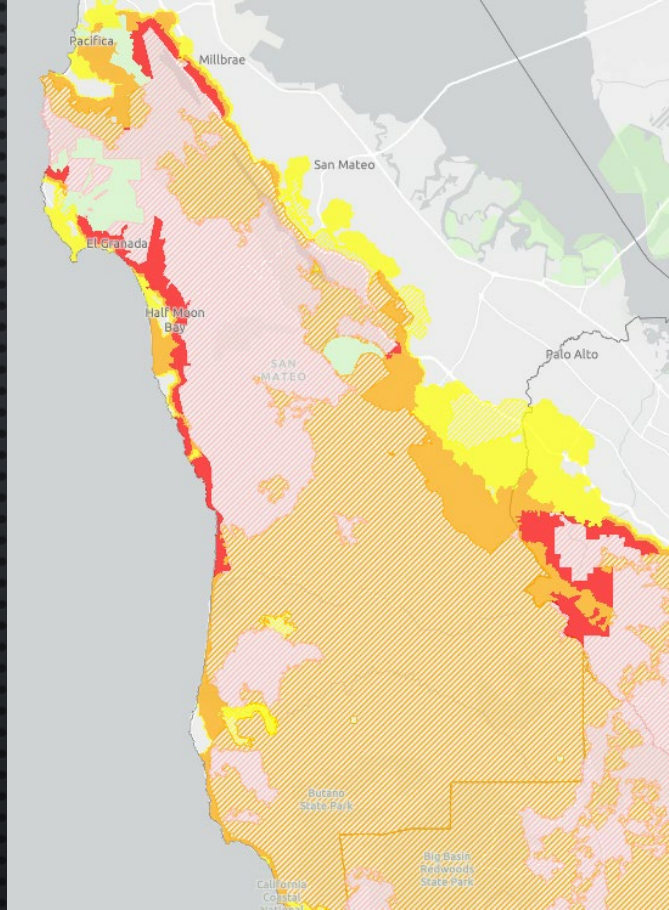
Fire Hazard Severity Zone Maps

- LRA Maps vs. SRA Maps
- SRA Maps were released last year
- LRA Maps were release on February 24, 2025
- Increases in the hazard zones especially along the coast
- These hazard maps inform building code, fire code, planning decisions, defensible space, vegetation management and more.
- Not maps for insurance purposes





Fire Hazard Severity Zone Maps





Zone 0 – Defensible Space

- AB3074 (2020)
- Directs CA Board of Forestry to establish regulations to establish a 0-5 ft “ember resistant zone”
- This is in addition to the two current zones (30’ and 100’)





Other

- Continue to participate with local agencies on pre-positioning of resources
- CAL FIRE staffs additional resources based on anticipated weather
- Boundary-drop system in San Mateo County important
- Utilize AlertCalifornia cameras
- Conduct joint wildfire evacuation drills and messaging





QUESTIONS?

COUNTY OF SAN MATEO
FIRE DEPARTMENT