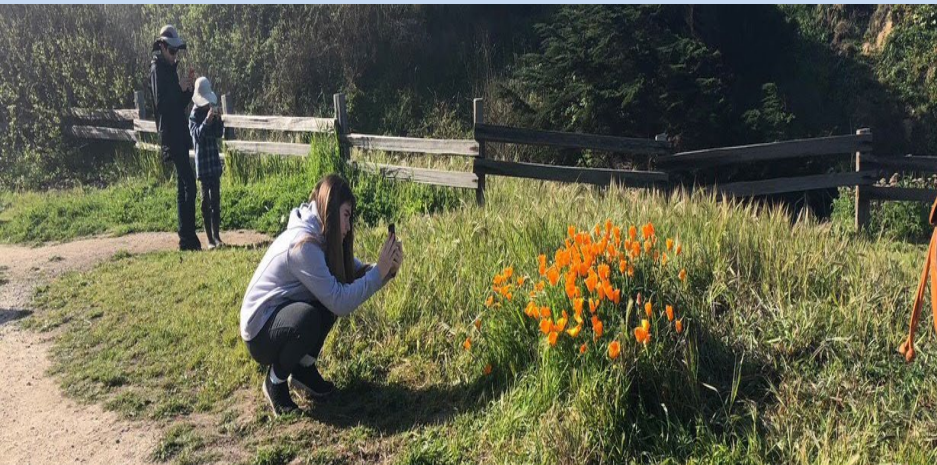
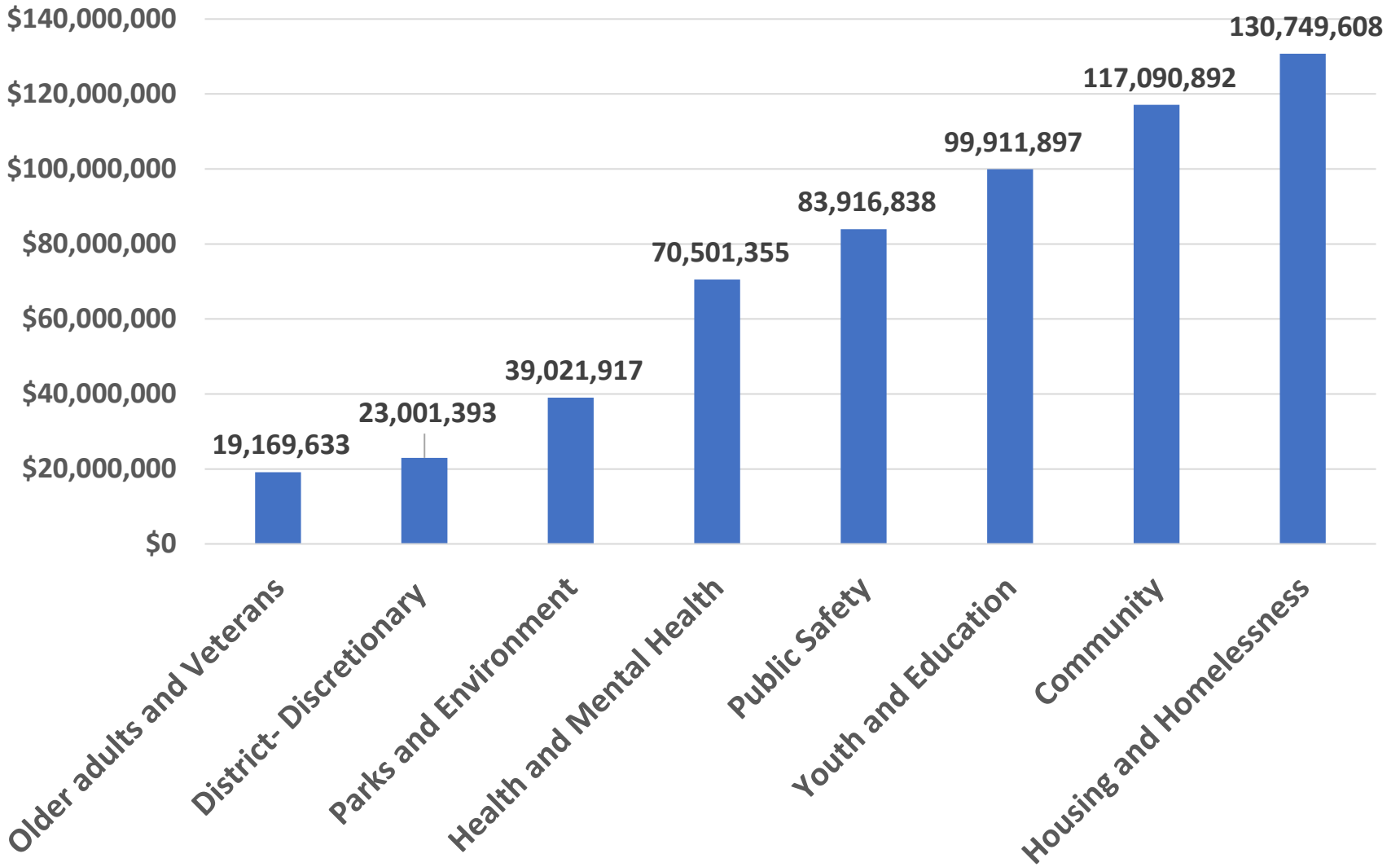




# Measure K: 10 Years of Progress



# 10 Year Expenditures By Category



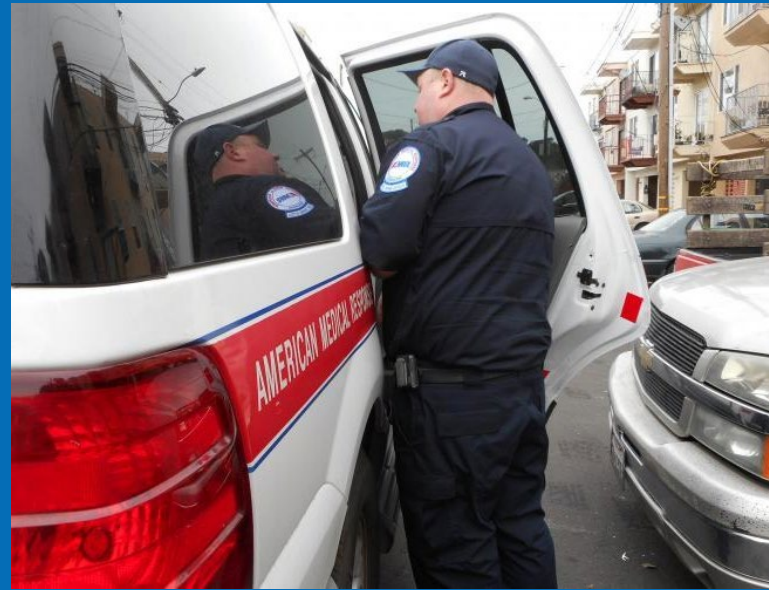


**PUBLIC SAFETY**





**HEALTH AND  
MENTAL HEALTH**



**YOUTH AND  
EDUCATION**





# HOUSING AND HOMELESSNESS





**PARKS AND  
ENVIRONMENT**





**OLDER ADULTS  
AND VETERANS**





# COMMUNITY SERVICES

