

BACKFLOW PREVENTION ORDINANCE-MINOR AMENDMENTS

Heather Forshey | Director, MS, REHS



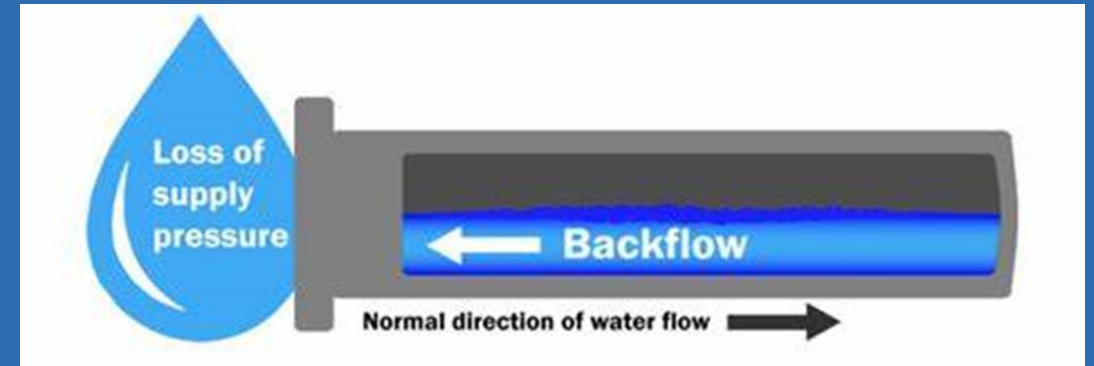
SAN MATEO COUNTY HEALTH
**ENVIRONMENTAL
HEALTH SERVICES**

BACKGROUND



SAN MATEO COUNTY HEALTH
**ENVIRONMENTAL
HEALTH SERVICES**

- The purpose of cross-connection control (backflow prevention) is to ensure the public drinking water supply is not subject to the backflow of liquids, gases, or other substances
- Water from within a facility must be stopped from "flowing backwards" into our drinking water



[Image Source](#)

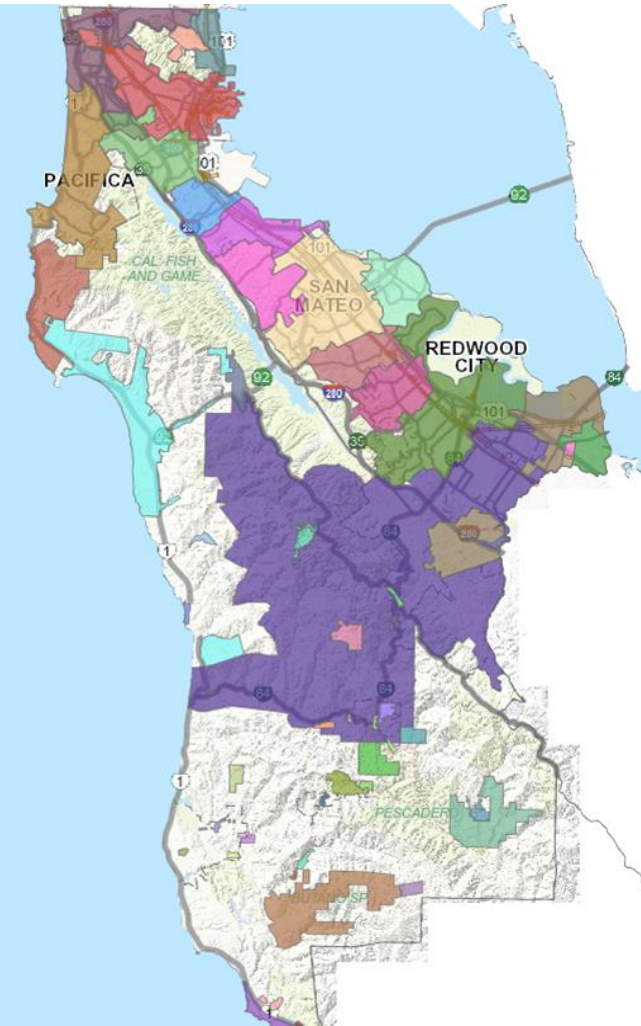


Program Purveyor List



SAN MATEO COUNTY HEALTH
**ENVIRONMENTAL
HEALTH SERVICES**

- Mid-Peninsula Water District (City of Belmont)
- Brisbane Water Department
- Guadalupe Valley Municipal Improvement District
- Burlingame Water Department
- County Service Area 7 (La Honda)
- County Service Area 11 (Pescadero)
- Cuesta La Honda Guild
- Daly City Water Department
- Estero Municipal Improvement District (City of Foster City)
- Hillsborough Water Department
- Menlo Park Municipal Water
- Millbrae Water Department
- North Coast County Water District (City of Pacifica)
- O'Connor Tract Co-Op Water Company (East Palo Alto)
- Palo Alto Park Mutual (East Palo Alto)
- San Bruno Water Department
- Veolia North America (City of East Palo Alto)
- Westborough Water District (South San Francisco)



PROPOSAL



SAN MATEO COUNTY HEALTH
**ENVIRONMENTAL
HEALTH SERVICES**

Updates to Ordinance is required:

- **Authorized testers must now submit annual gauge calibration reports**
- **EHS will report suspended or revoked tester authorizations to the testers' certifying agency (typically American Water Works Association)**
- **Updated definitions and language, as well as addition of new definitions to align with State regulations and policies**



RECOMMENDATION



SAN MATEO COUNTY HEALTH
**ENVIRONMENTAL
HEALTH SERVICES**

- **Approval of the amendment to the San Mateo County Ordinance Code, repealing and replacing Sections 4.72.010 through 4.72.150 of Chapter 4.72 of Title 4 to align the ordinance with new Statewide regulations impacting Backflow Prevention (Cross-Connection Control) Programs.**

Questions?



SAN MATEO COUNTY HEALTH
ENVIRONMENTAL
HEALTH SERVICES