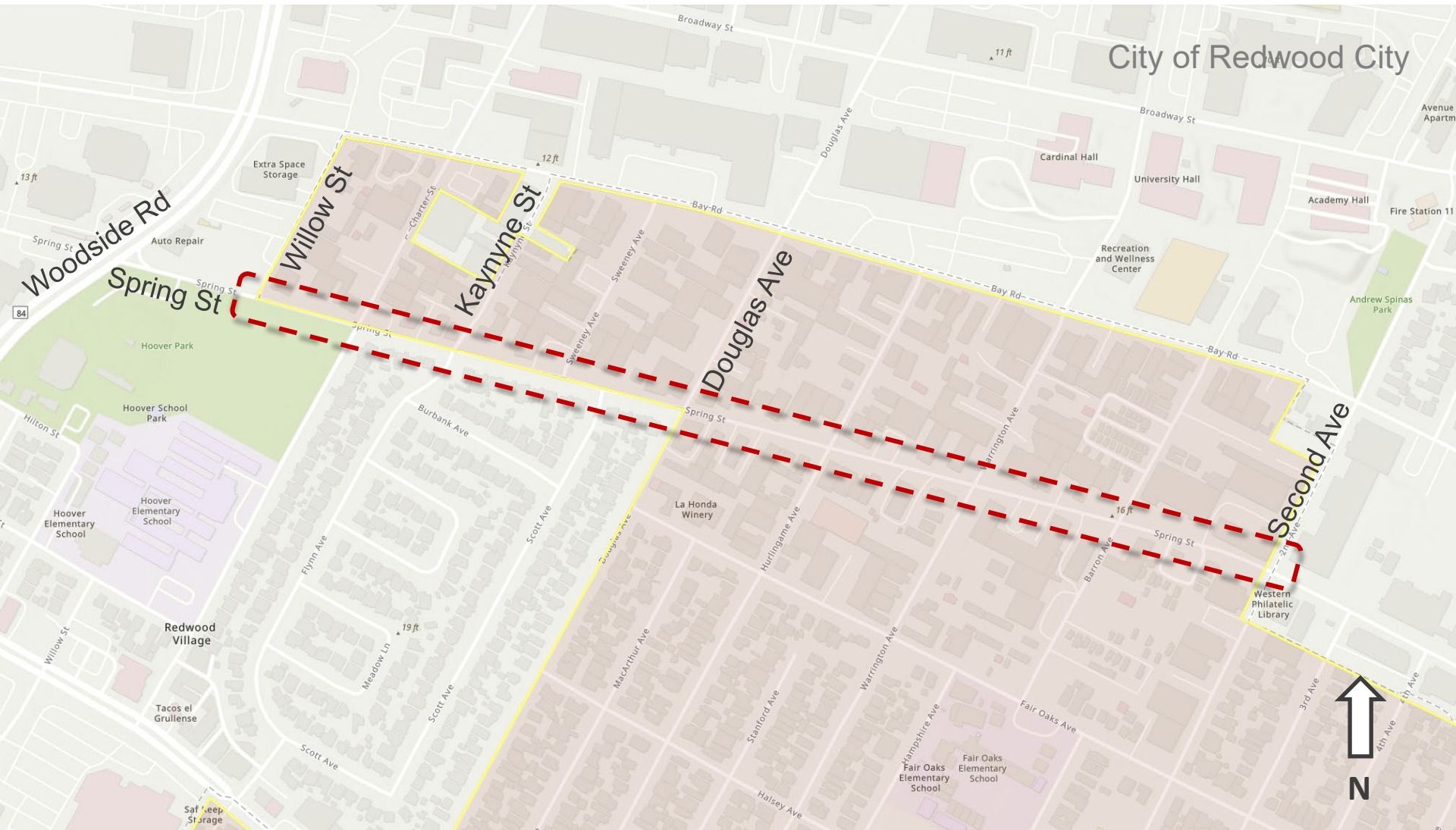


Introduction of Ordinances to Reduce the Speed Limit in School Zones on Portions of Spring Street (City of Redwood City) and Camino al Lago (Town of Atherton)



Ann M. Stillman
Director of Public Works
August 12, 2025

Location Map: North Fair Oaks (City of Redwood City)

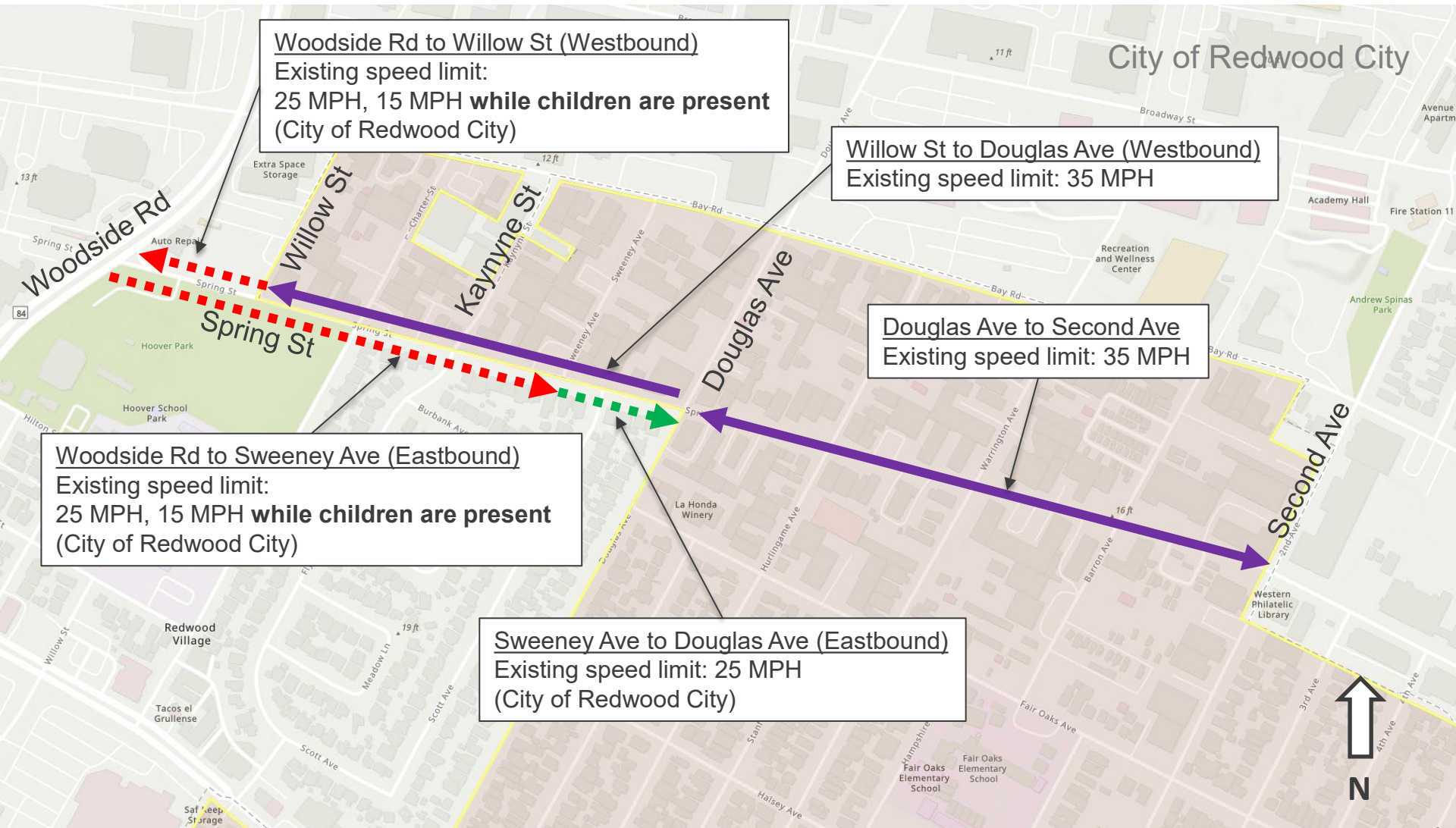


Spring St
Section of Interest

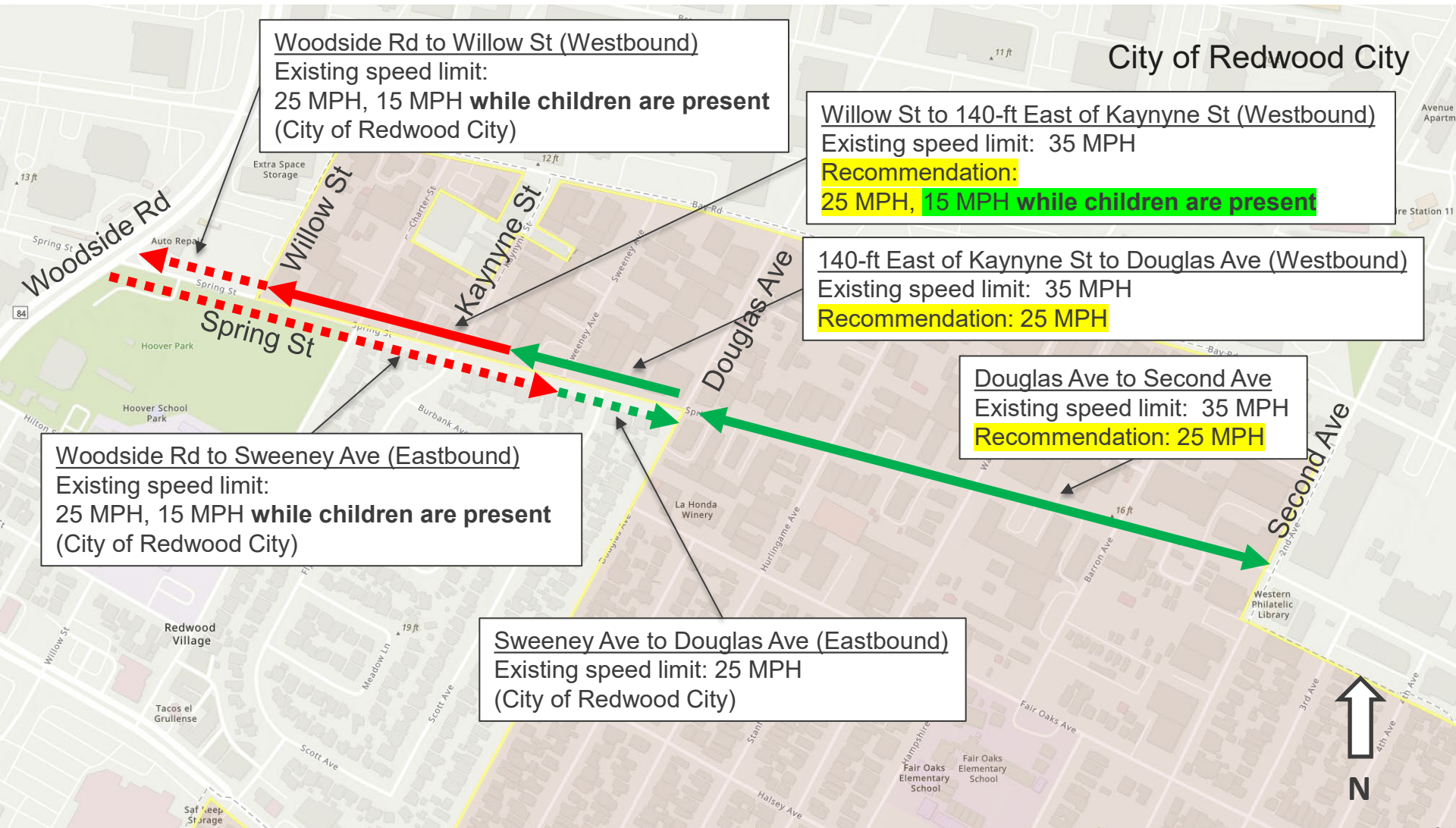


Unincorporated
San Mateo County

Existing Speed Limits



Existing Speed Limits & Recommendation



Location Map: West Menlo Park (Town of Atherton)

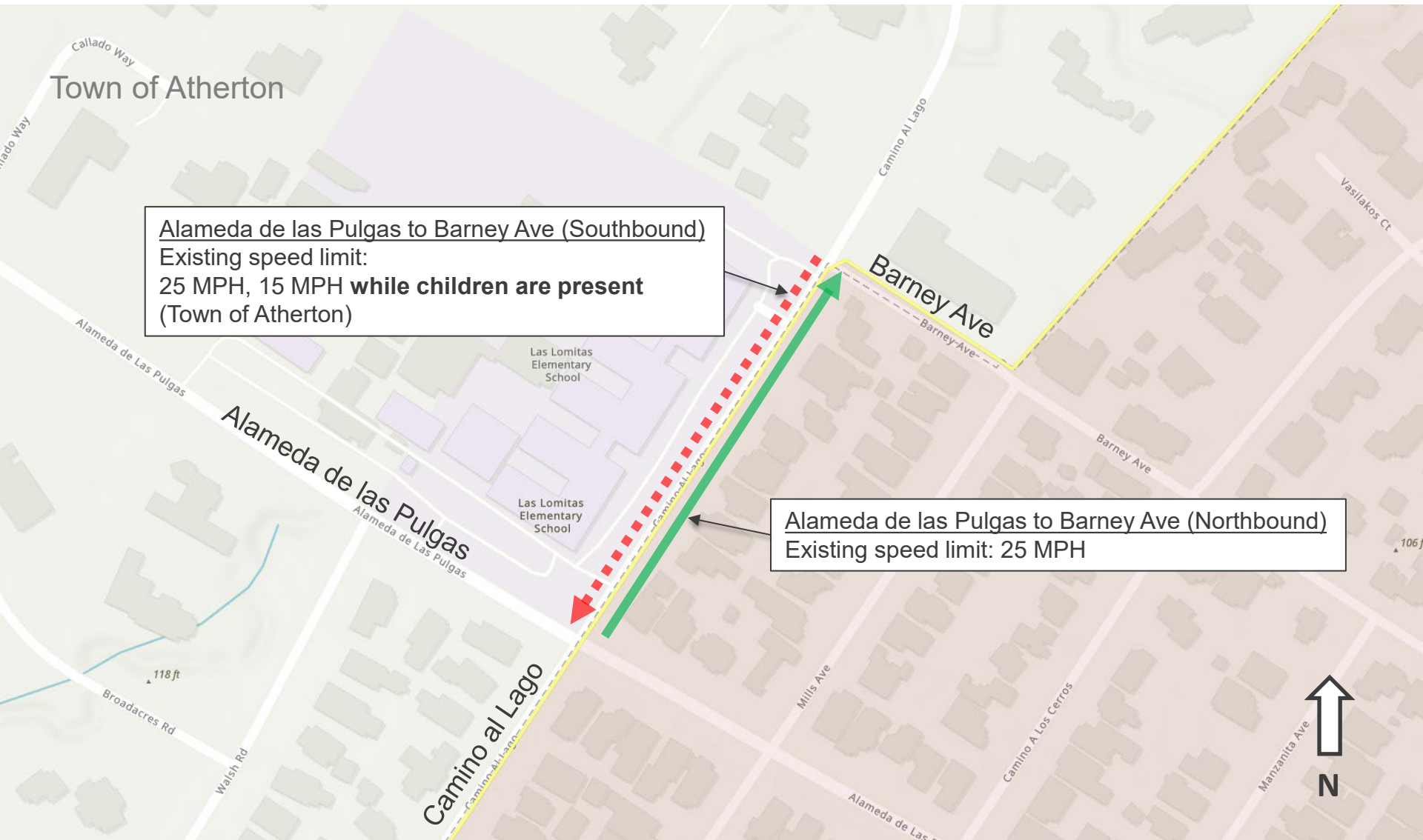


Camino al Lago
Section of Interest

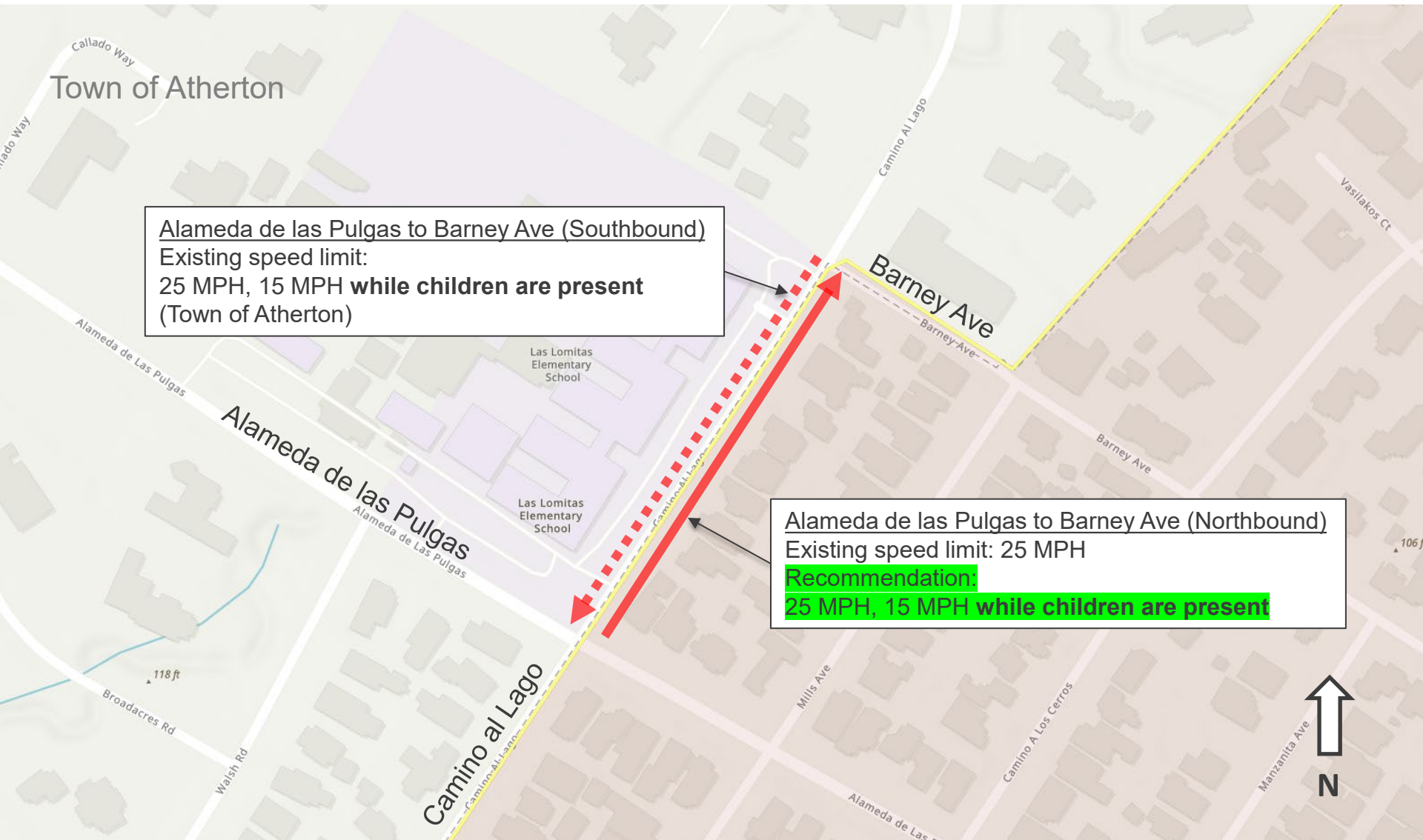


Unincorporated
San Mateo County

Existing Speed Limits



Existing Speed Limits & Recommendation



Unincorporated
San Mateo County

Thank You!



Questions?

